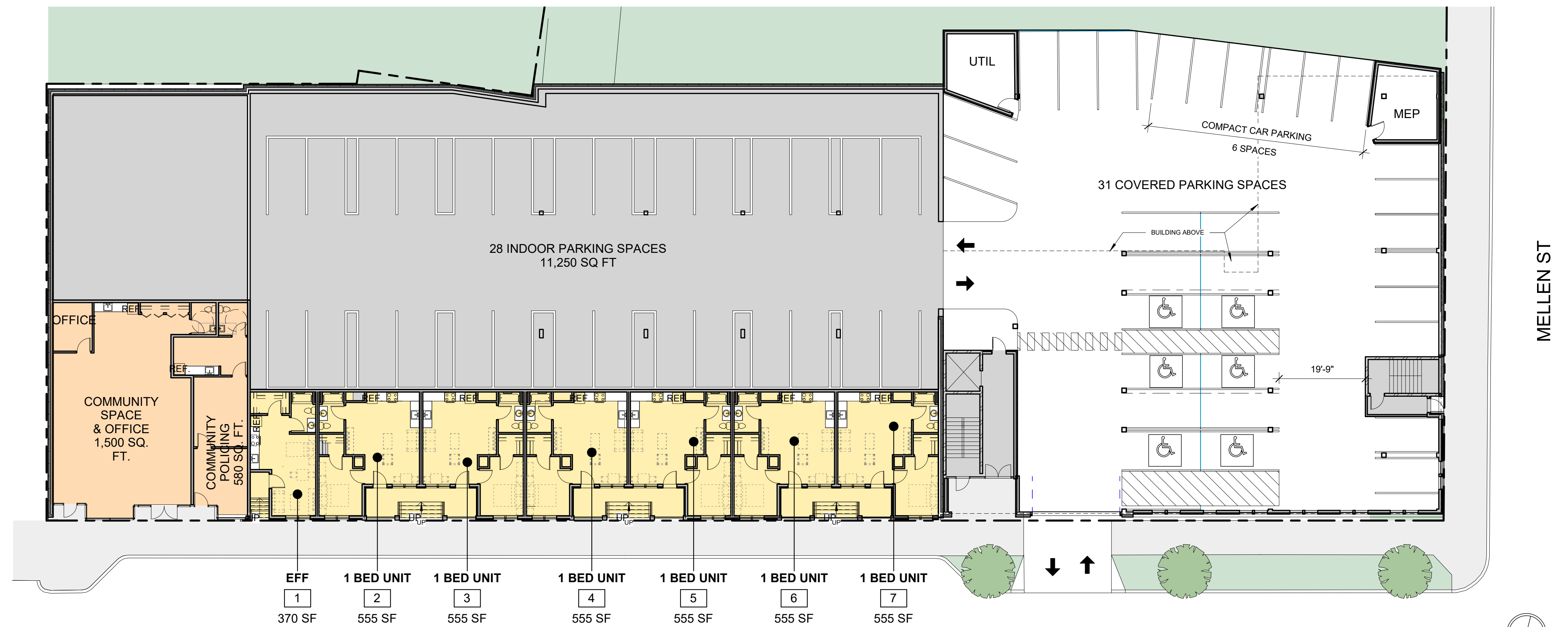


**BUILDING A TOTALS**  
 EXISTING UNITS -  
 13 - THREE BEDROOM UNITS  
 NEW UNITS -  
 7 - EFFICIENCY UNITS  
 25 - ONE BEDROOM UNITS  
 8 - TWO BEDROOM UNITS  
**53 TOTAL UNITS**  
 59 TOTAL PARKING SPACES  
 34,870 SF - TOTAL NEW CONSTRUCTION  
 (INCL NEW UNITS & COMM RM.  
 IN EXIST BLDG)



Prepared For:  
**AVESTA HOUSING**

Consultant:  
**ARCHETYPE architects**  
 48 Union Wharf Portland, Maine 04101  
 (207) 772-6022 ARCHETYPE@ARCHETYPEPA.COM

Project:  
**510 CUMBERLAND AVENUE HOUSING**  
 Portland, ME 04101

Date: 31 AUG 2017  
 Scale: 1/16" = 1'-0"  
**BUILDING A - FLOOR PLANS**

**A1.01**