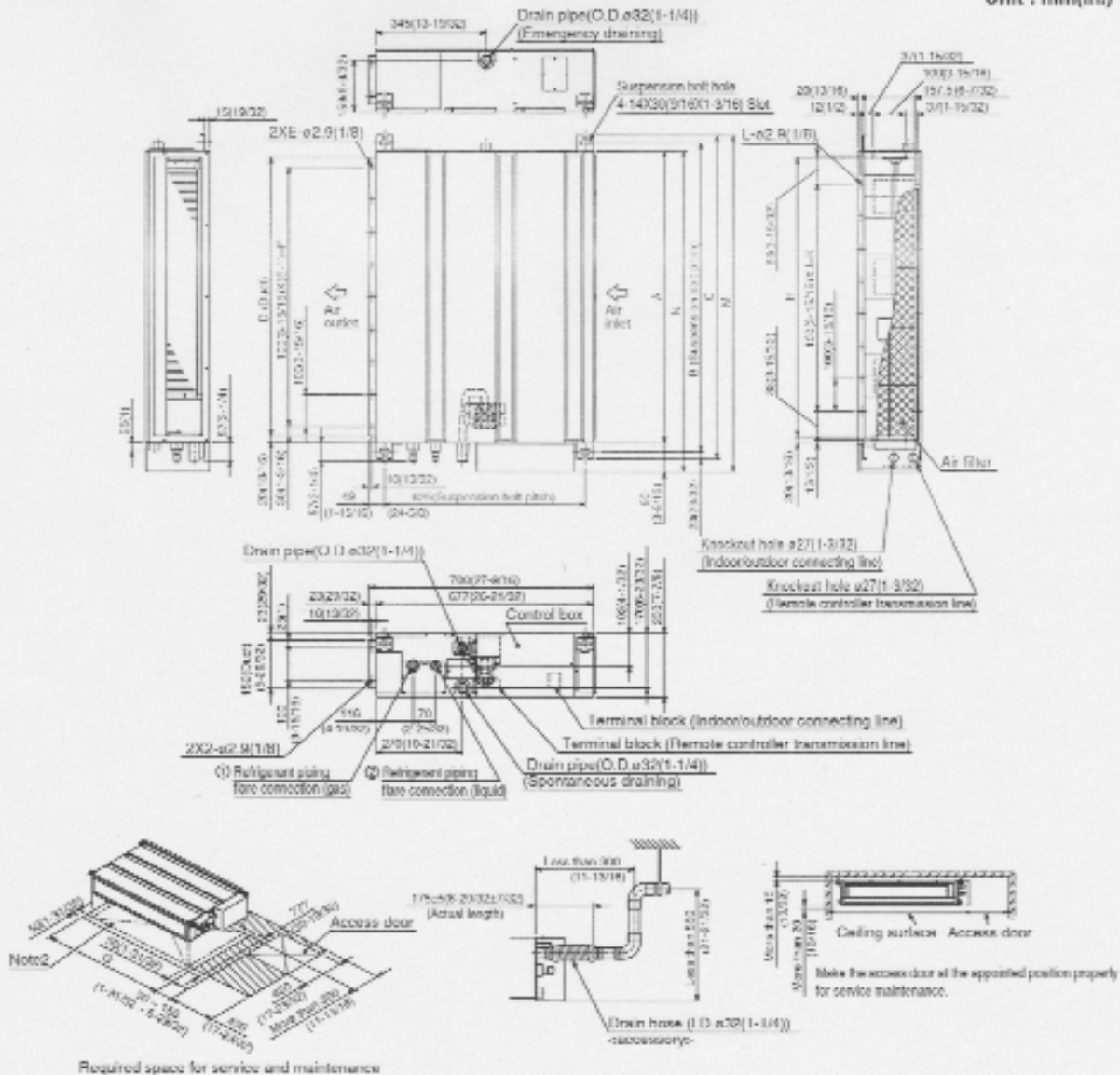


DIMENSIONS: SEZ-KD09NA

Unit : mm(in.)



Required space for service and maintenance

Model	mm(in.)														Gas pipe ø9.52(3/8)	Liquid pipe ø6.35(1/4)
	A	B	C	D	E	F	G	H	J	K	L	M	N			
SEZ-KD09NA	700 (27.56)	703 (27.68)	706 (27.79)	660 (26)	7	903 (35.55)	904 (35.59)	905 (35.63)	5	661 (26.03)	16	904 (35.59)	703 (27.68)			
SEZ-KD12NA	900 (35.43)	902 (35.51)	906 (35.67)	860 (33.78)	9	900 (35.43)	1000 (39.37)	900 (35.43)	7	700 (27.56)	20	1039 (40.90)	990 (38.98)			
SEZ-KD15NA	1100 (43.31)	1102 (43.39)	1106 (43.54)	1060 (41.73)	11	1000 (39.37)	1200 (47.24)	1000 (39.37)	9	900 (35.43)	24	1229 (48.35)	1190 (46.87)			

- Note 1. Use M10 screw for the suspension bolt (field supply).
 2. Keep the service space for the maintenance at the bottom.
 3. This chart indicates for SEZ-KD12NA model which has 3 fans.
 SEZ-KD09, 12NA models have 2 fans.
 SEZ-KD15NA models have 4 fans.
 4. In case an inlet duct is used remove the air filter(supply with the unit), then install the filter(only supply) at suction side.



HVAC Advanced Products Division
 3400 Lawrenceville Suwanee Rd
 Suwanee, GA 30074
 Tele: 878-378-2900 • Fax: 800-889-9901
 Toll Free: 800-433-4872 (#3)
 www.mehvac.com
 Specifications are subject to change without notice.