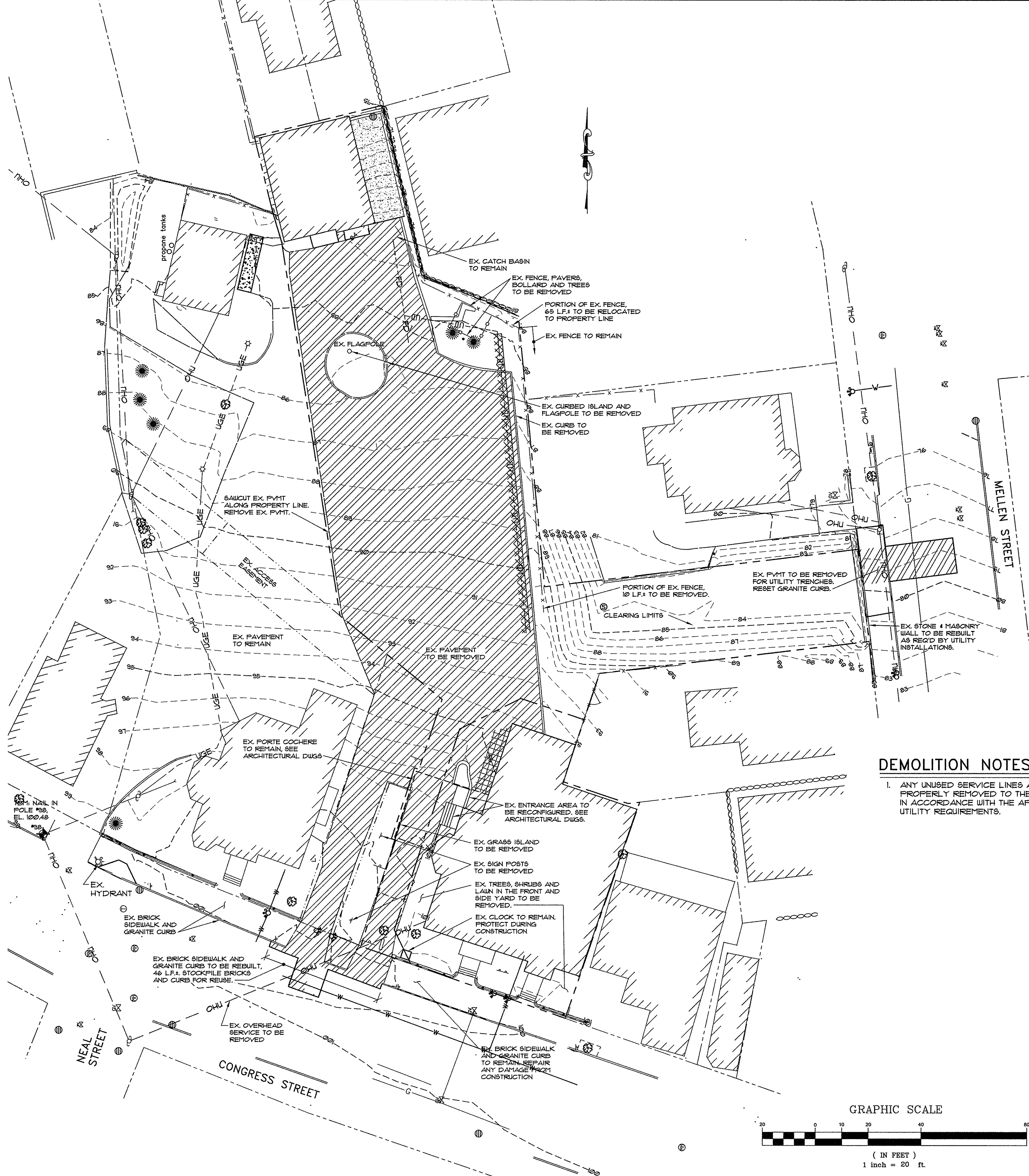


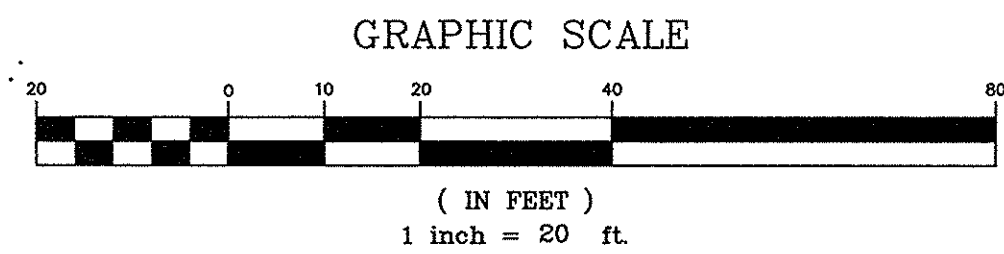
LEGEND

- EXISTING**
- PROPERTY LINE
 - - - ABUTTERS PROPERTY
 - - - EASEMENT
 - - - EDGE OF PAVEMENT
 - - - CONTOURS
 - ▨ BUILDING
 - CURB
 - GAS LINE
 - SANITARY SEWER
 - STORMDRAIN
 - OVERHEAD UTILITY
 - WATER LINE
 - ⊙ CATCH BASIN
 - ⊙ SEWER MANHOLE
 - ⊙ HYDRANT
 - ⊙ WATER VALVE
 - ⊙ GAS VALVE
 - ⊙ POLE MOUNTED TRANSFORMER
 - ⊙ UTILITY POLE W/ GUY WIRE
 - ⊙ LIGHT POLE
 - ⊙ AREA LIGHT ON POLE
 - ⊙ SIGN
 - ⊙ FENCE
 - ⊙ BENCHMARK
 - ⊙ TREE
 - ▨ IMPERVIOUS TO BE REMOVED

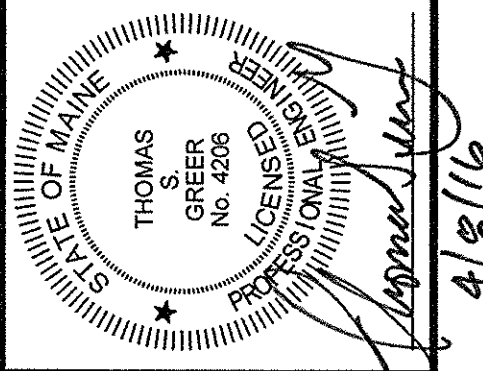


DEMOLITION NOTES

1. ANY UNUSED SERVICE LINES ARE TO BE PROPERLY REMOVED TO THE MAIN. CAP EACH IN ACCORDANCE WITH THE APPROPRIATE UTILITY REQUIREMENTS.



PINKHAM & GREER
CIVIL ENGINEERS
 28 WANKAM AVE. PORTLAND, ME 04103
 TEL: 207.761.5242 FAX: 207.761.4245



REV.	DATE	DESCRIPTION
1	4/8/16	PER STA FF CO WORK STARTS

APPLICANT: DENOVO, LLC
 47 WAITES LANDING ROAD
 FALMOUTH, MAINE

SCALE: AS SHOWN
 DATE: FEBRUARY 22, 2016
 PROJECT: 15155

DRN BY: JDC
 DESG BY: TSG
 CHK BY: JSB

749 CONGRESS STREET
 749 CONGRESS STREET
 PORTLAND, MAINE

**EXISTING CONDITIONS
 AND DEMOLITION PLAN**

C1.3

MAP/PLOT 47 / A / 20, 30, 28, 32