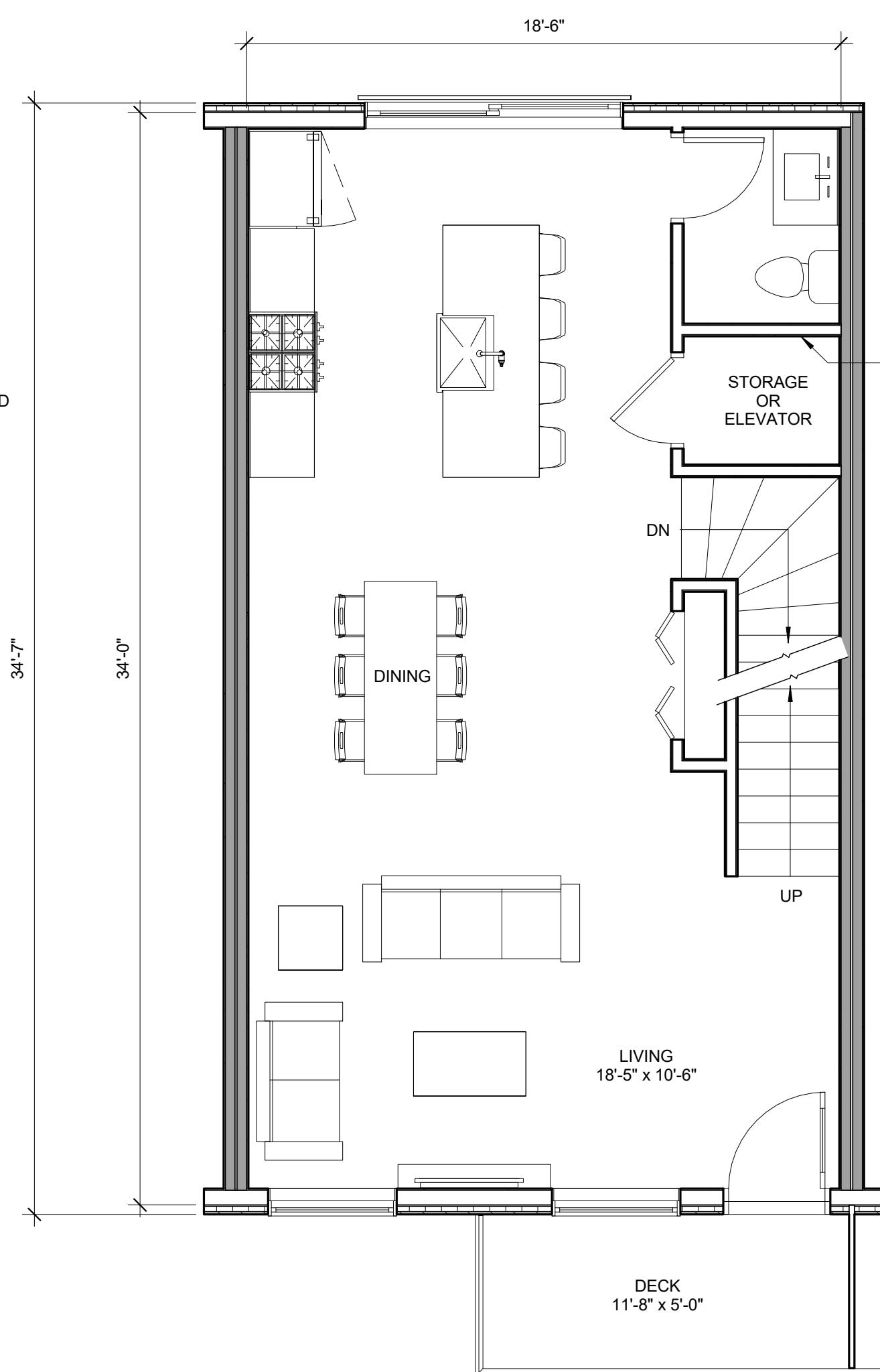


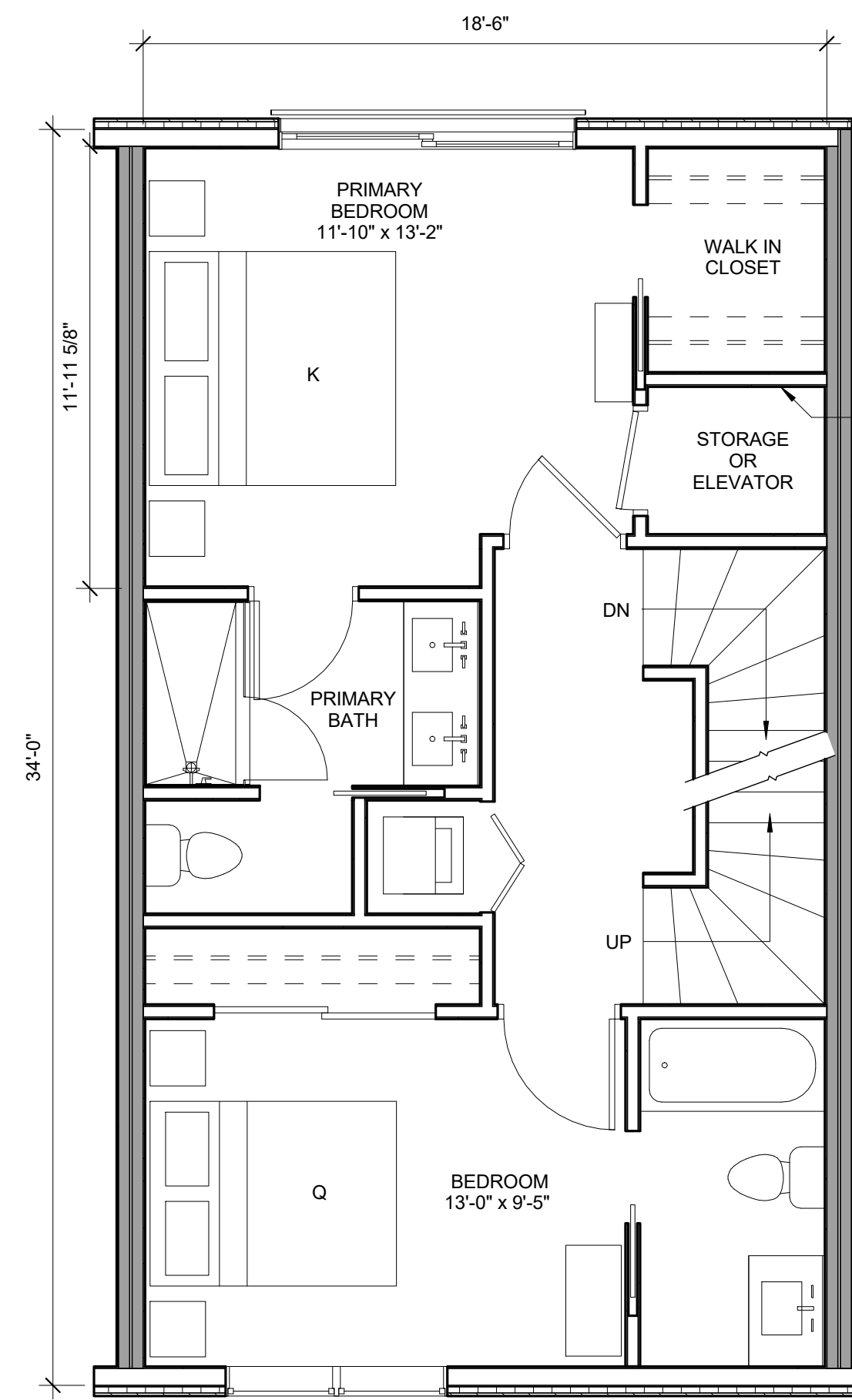
1 | 1ST FLOOR

1/4" = 1'-0" 0 1'-0" 2'-0" 4'-0" 8'-0"



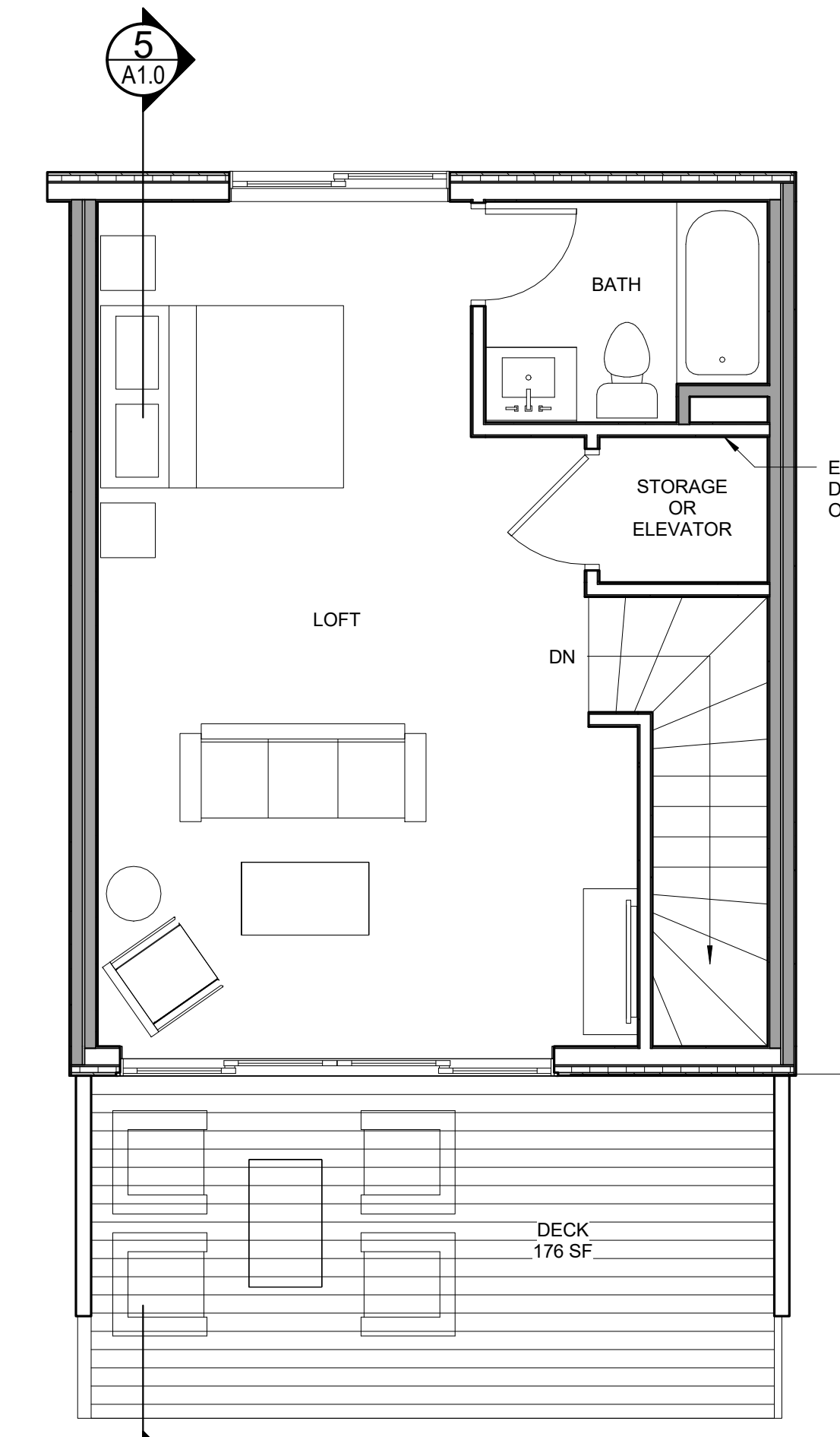
2 | 2ND FLOOR

1/4" = 1'-0" 0 1'-0" 2'-0" 4'-0" 8'-0"



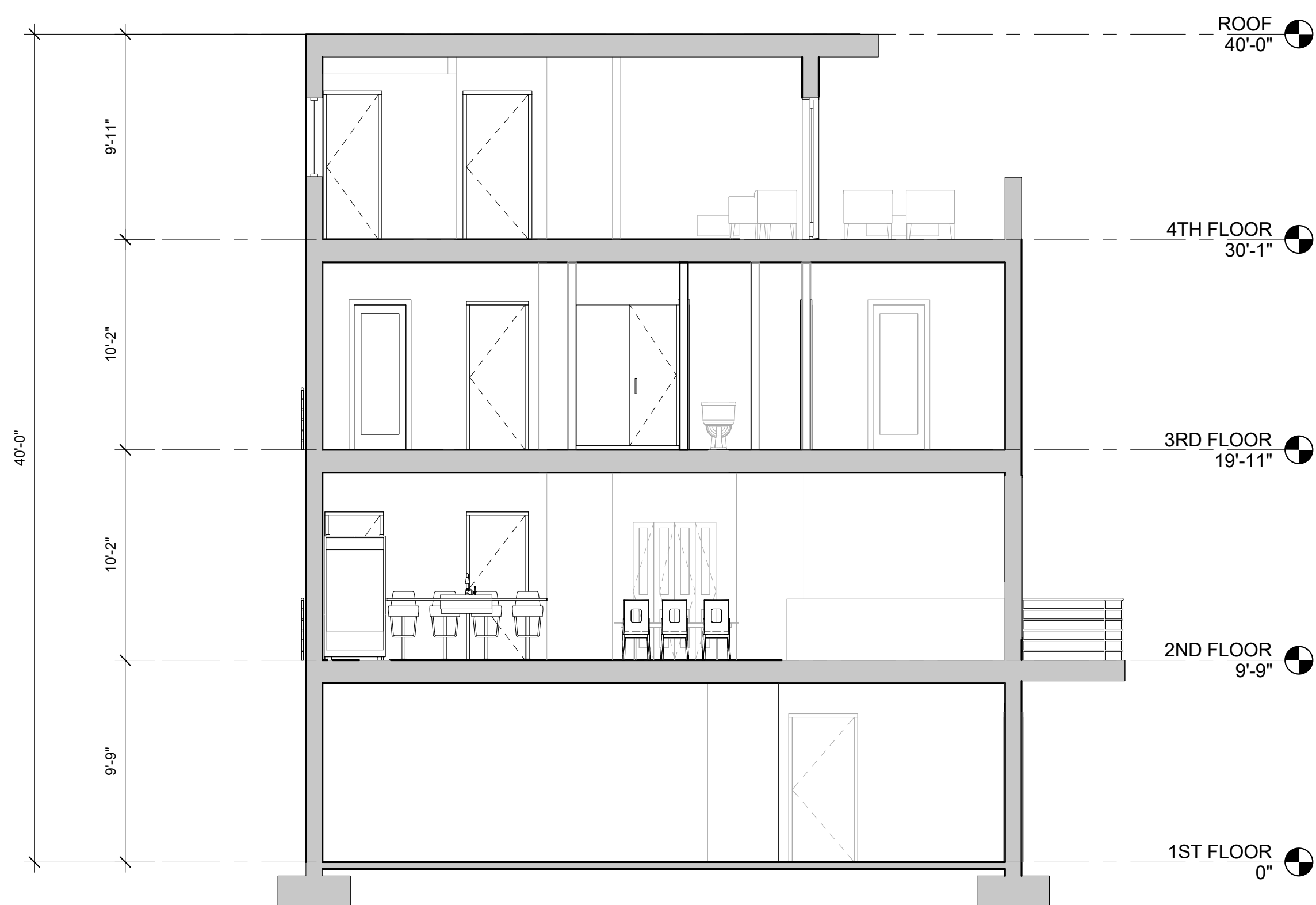
3 | 3RD FLOOR

1/4" = 1'-0" 0 1'-0" 2'-0" 4'-0" 8'-0"



4 | 4TH FLOOR

1/4" = 1'-0" 0 1'-0" 2'-0" 4'-0" 8'-0"



5 | BUILDING SECTION

3/16" = 1'-0" 0 1'-0" 2'-0" 4'-0" 8'-0"

749 CONGRESS ST

PORTLAND, MAINE

GROSS SQUARE FOOTAGES	
FIRST FLOOR -	663 SQ. FT.
LIVING	83 SQ. FT.
GARAGE	524 SQ. FT.
SECOND FLOOR -	663 SQ. FT.
THIRD FLOOR -	663 SQ. FT.
FOURTH FLOOR -	475 SQ. FT.
TOTAL LIVING -	1,884 SQ. FT.
GARAGE -	524 SQ. FT.
DECKS -	235 SQ. FT.

FEB 22, 2016

A1.0