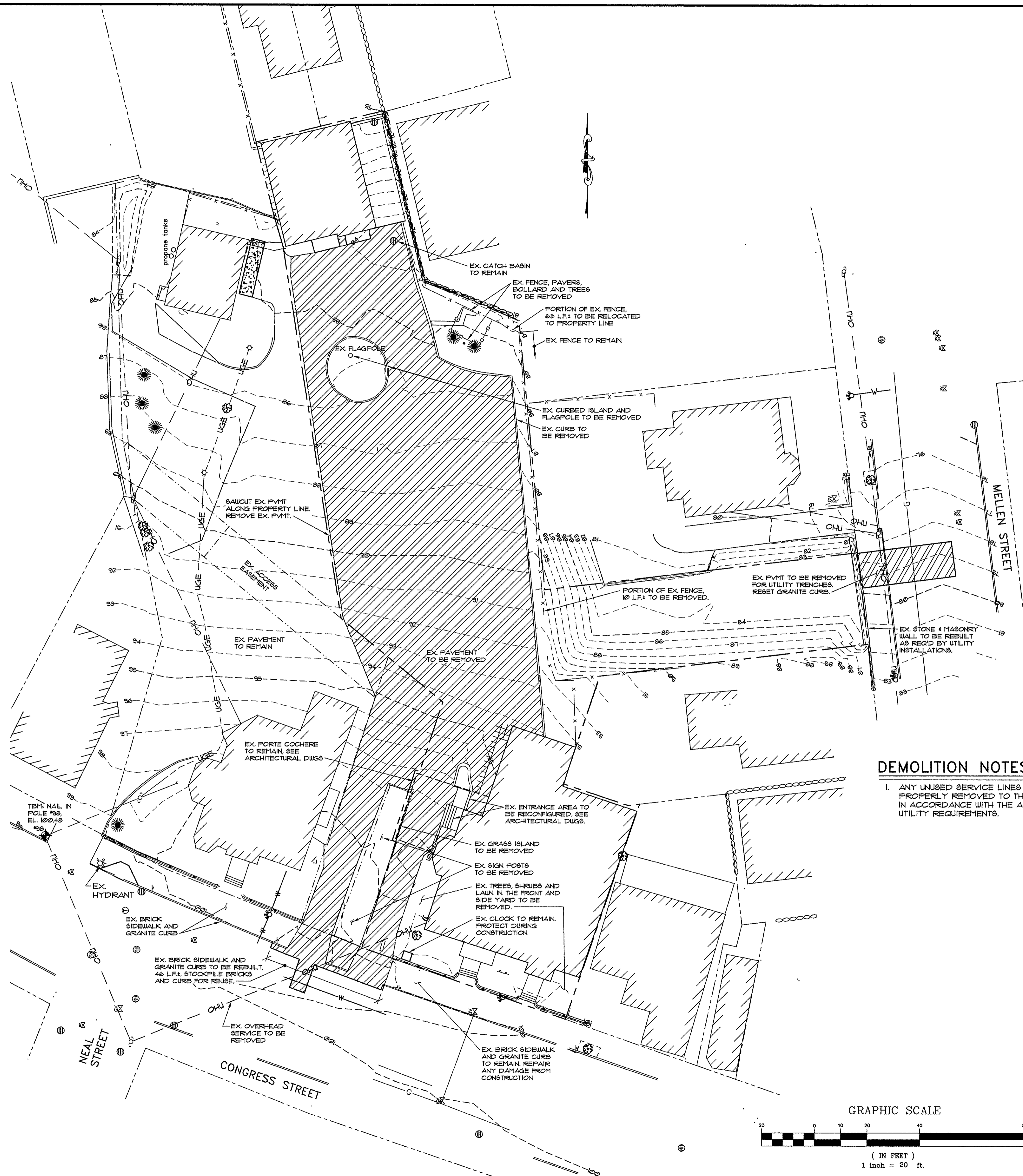


LEGEND

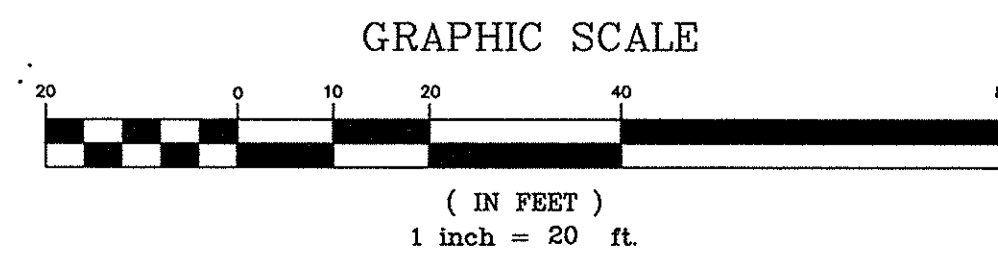
EXISTING

- PROPERTY LINE
- - - ABUTTERS PROPERTY
- - - EASEMENT
- - - EDGE OF PAVEMENT
- - - CONTOURS
- ▨ BUILDING
- CURB
- GAS LINE
- - - SANITARY SEWER
- - - STORMDRAIN
- - - OVERHEAD UTILITY
- - - WATER LINE
- ⊙ CATCH BASIN
- ⊙ SEWER MANHOLE
- ⊙ HYDRANT
- ⊙ GAS VALVE
- ⊙ POLE MOUNTED TRANSFORMER
- ⊙ UTILITY POLE W/ GUY WIRE
- ⊙ LIGHT POLE
- ⊙ AREA LIGHT ON POLE
- ⊙ SIGN
- ⊙ FENCE
- ⊙ BENCHMARK
- ⊙ TREE
- ▨ IMPERVIOUS TO BE REMOVED

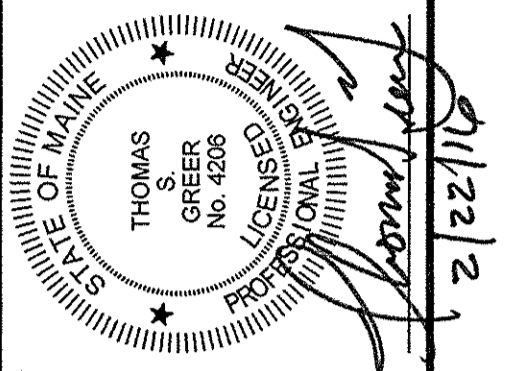


DEMOLITION NOTES

1. ANY UNUSED SERVICE LINES ARE TO BE PROPERLY REMOVED TO THE MAIN. CAP EACH IN ACCORDANCE WITH THE APPROPRIATE UTILITY REQUIREMENTS.



PINKHAM & GREER
CIVIL ENGINEERS
 28 WAWMWH AVE. PORTLAND, ME 04103
 TEL: 207.761.5242 FAX: 207.761.4245



REV.	DATE	DESCRIPTION

APPLICANT: DENOVO, LLC
 47 WAITES LANDING ROAD
 FALMOUTH, MAINE

SCALE: AS SHOWN DRN BY: JDC
 DATE: FEBRUARY 22, 2016 DESG BY: TSG
 PROJECT: 15156 CHK BY: TSG

749 CONGRESS STREET
 749 CONGRESS STREET
 PORTLAND, MAINE

EXISTING CONDITIONS
 AND DEMOLITION PLAN

C1.3

MAPLOT 47 / A / 20, 30, 28, 32