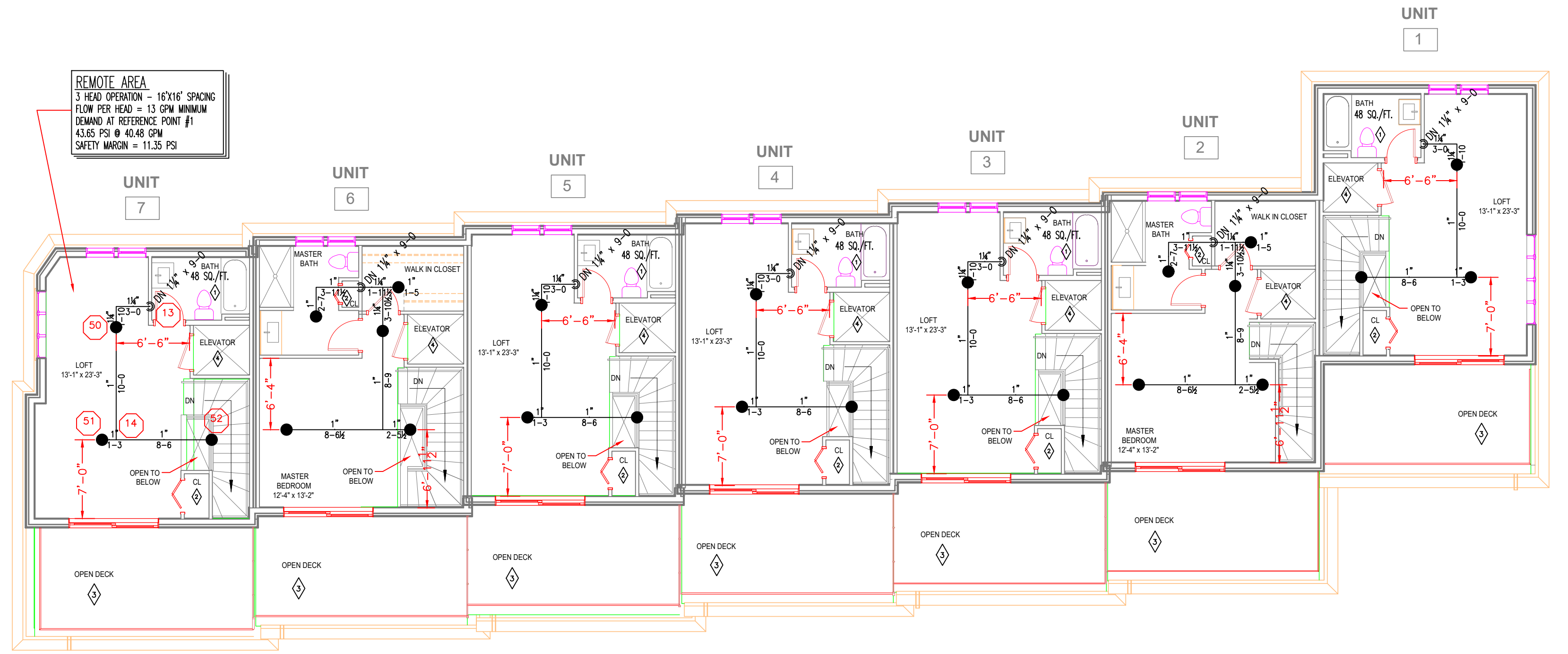
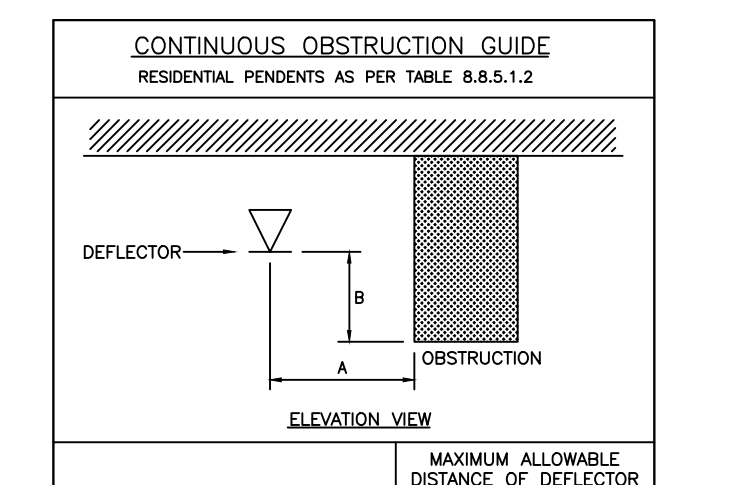
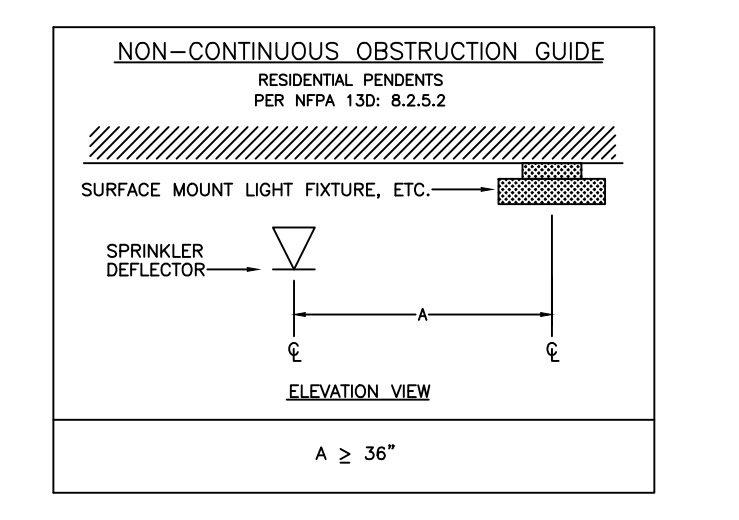
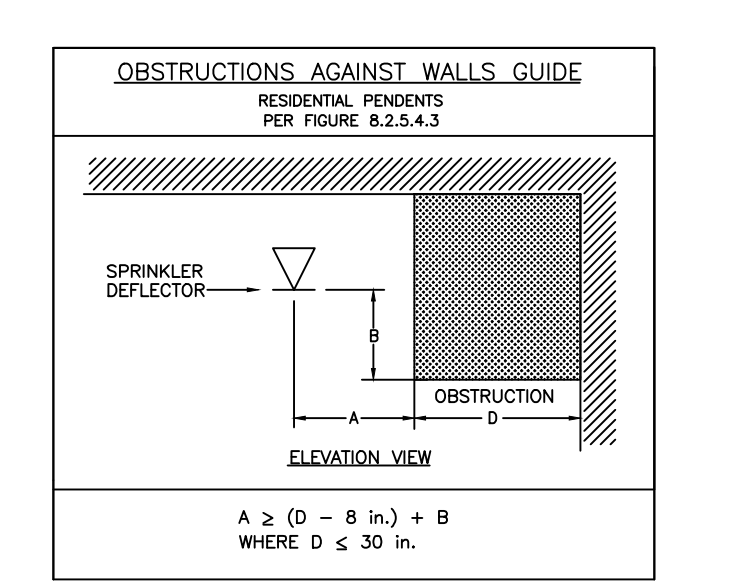


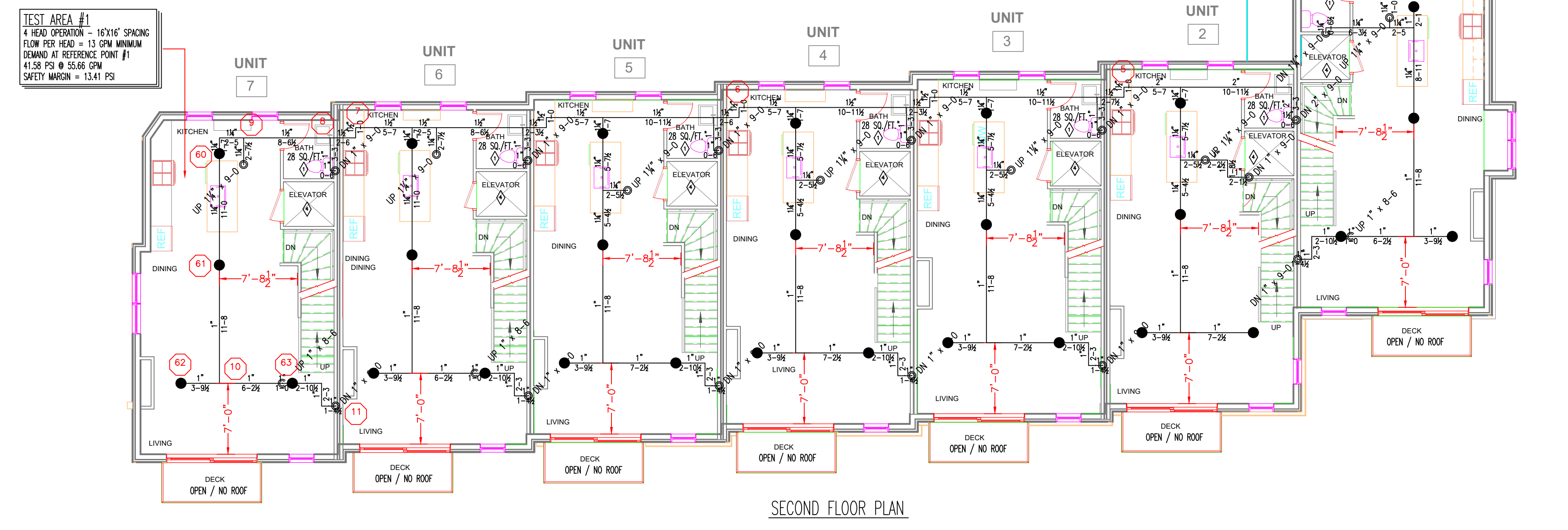
THIRD FLOOR PLAN



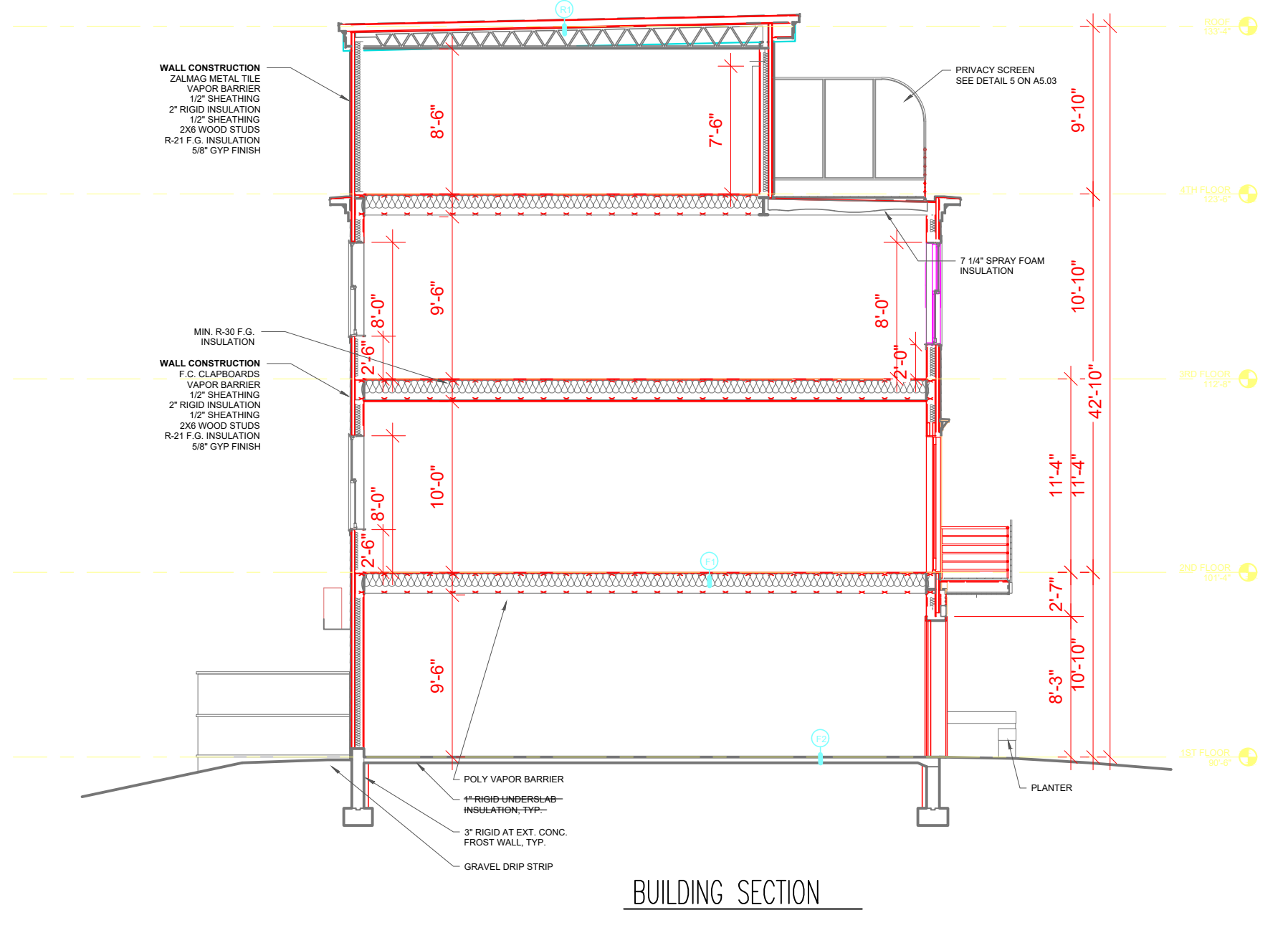
FOURTH FLOOR PLAN



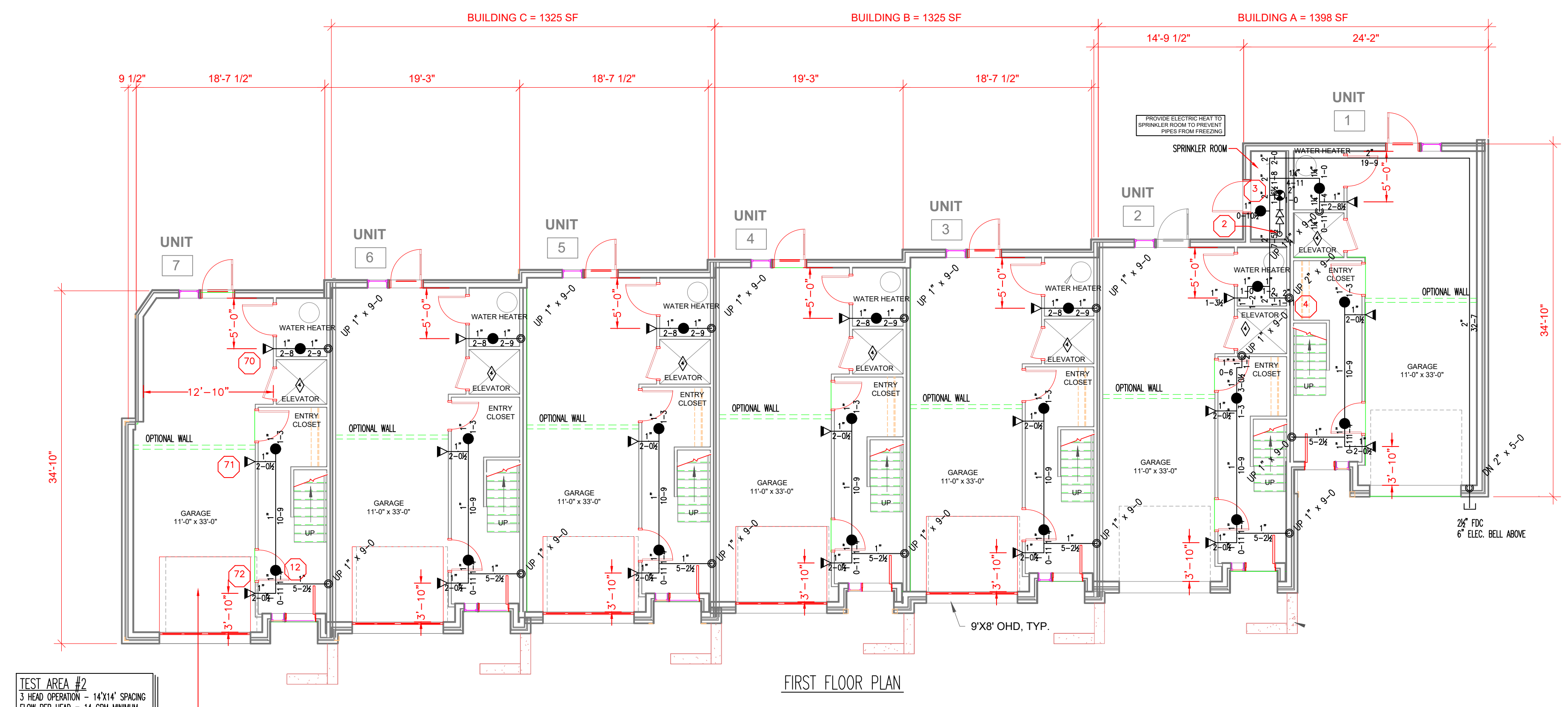
DISTANCE FROM SPRINKLERS FROM SIDE OF OBSTRUCTION (A)	MAXIMUM ALLOWABLE DISTANCE OF OBSTRUCTION ABOVE BOTTOM OF OBSTRUCTION (B) (ft)
LESS THAN 1 FT.	0
1 FT. TO LESS THAN 1 FT. 6 IN.	0
1 FT. 6 IN. TO LESS THAN 2 FT.	1
2 FT. TO LESS THAN 2 FT. 6 IN.	1
2 FT. 6 IN. TO LESS THAN 3 FT.	1
3 FT. TO LESS THAN 3 FT. 6 IN.	2
3 FT. 6 IN. TO LESS THAN 4 FT.	2
4 FT. TO LESS THAN 4 FT. 6 IN.	3
4 FT. 6 IN. TO LESS THAN 5 FT.	3
5 FT. TO LESS THAN 5 FT. 6 IN.	4
5 FT. 6 IN. TO LESS THAN 6 FT.	4
6 FT. TO LESS THAN 6 FT. 6 IN.	5
6 FT. 6 IN. TO LESS THAN 7 FT.	6
7 FT. AND GREATER	14



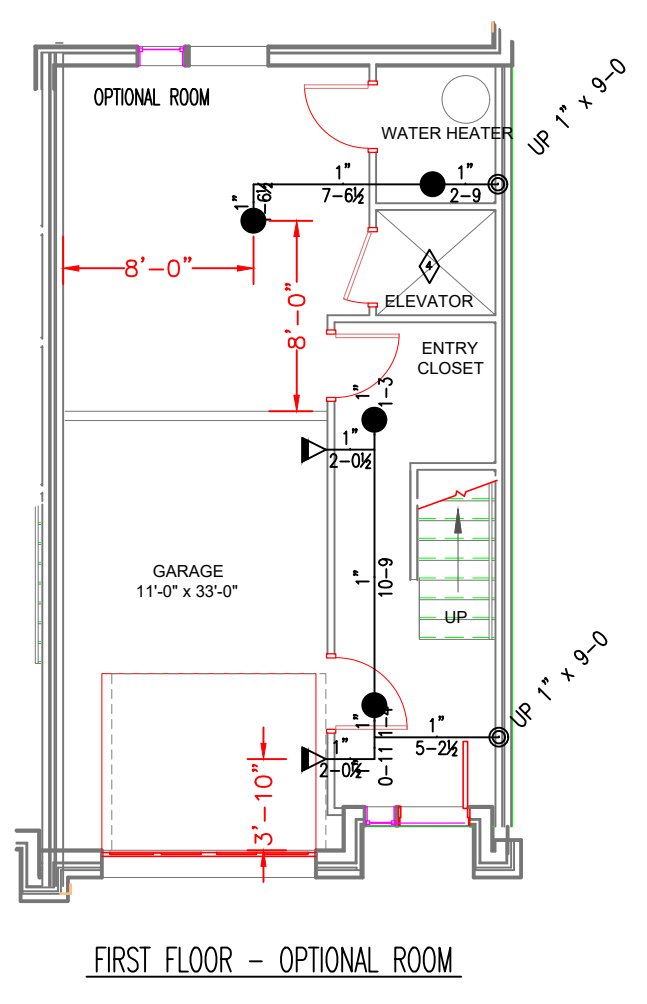
SECOND FLOOR PLAN



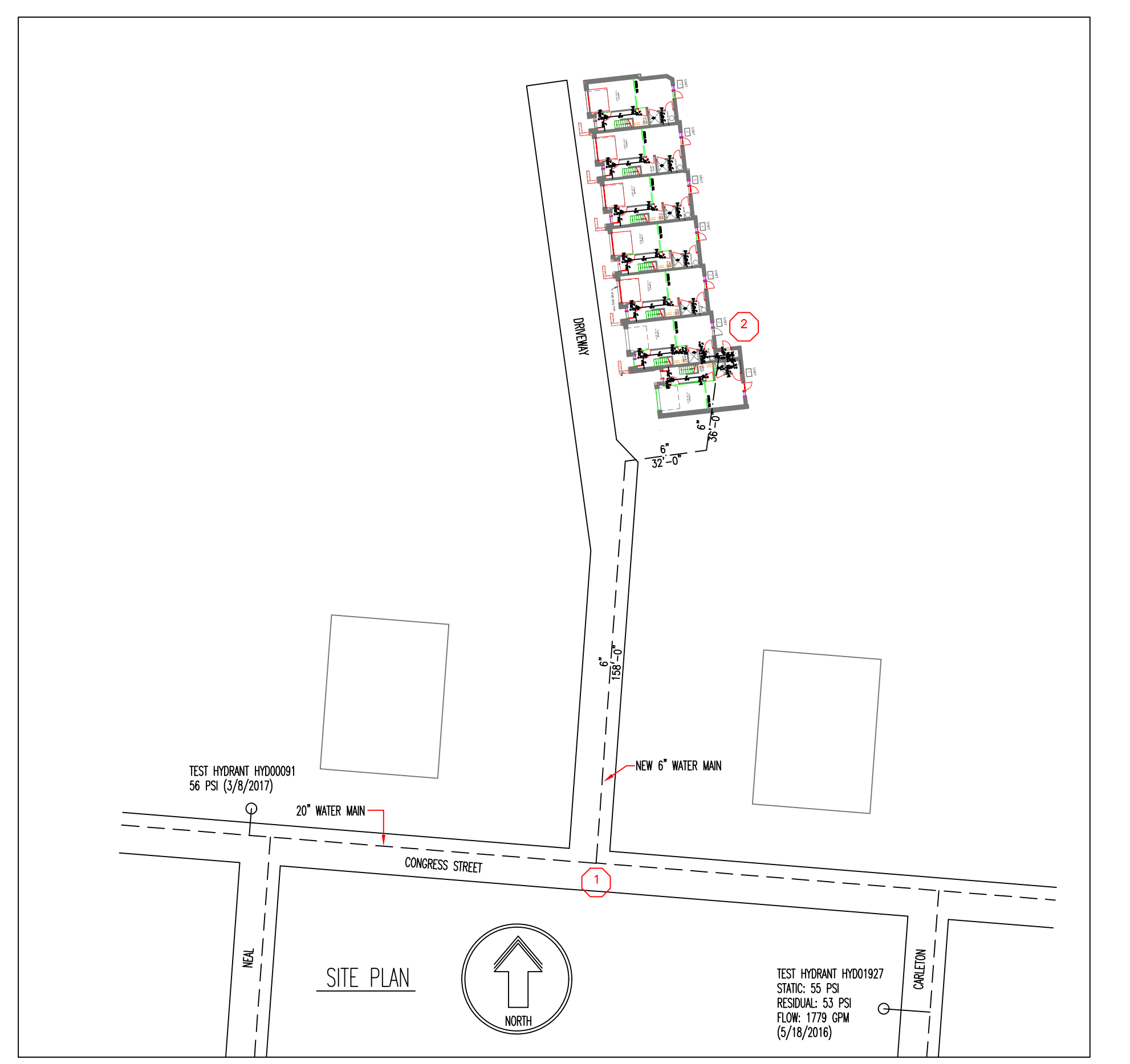
BUILDING SECTION



FIRST FLOOR PLAN

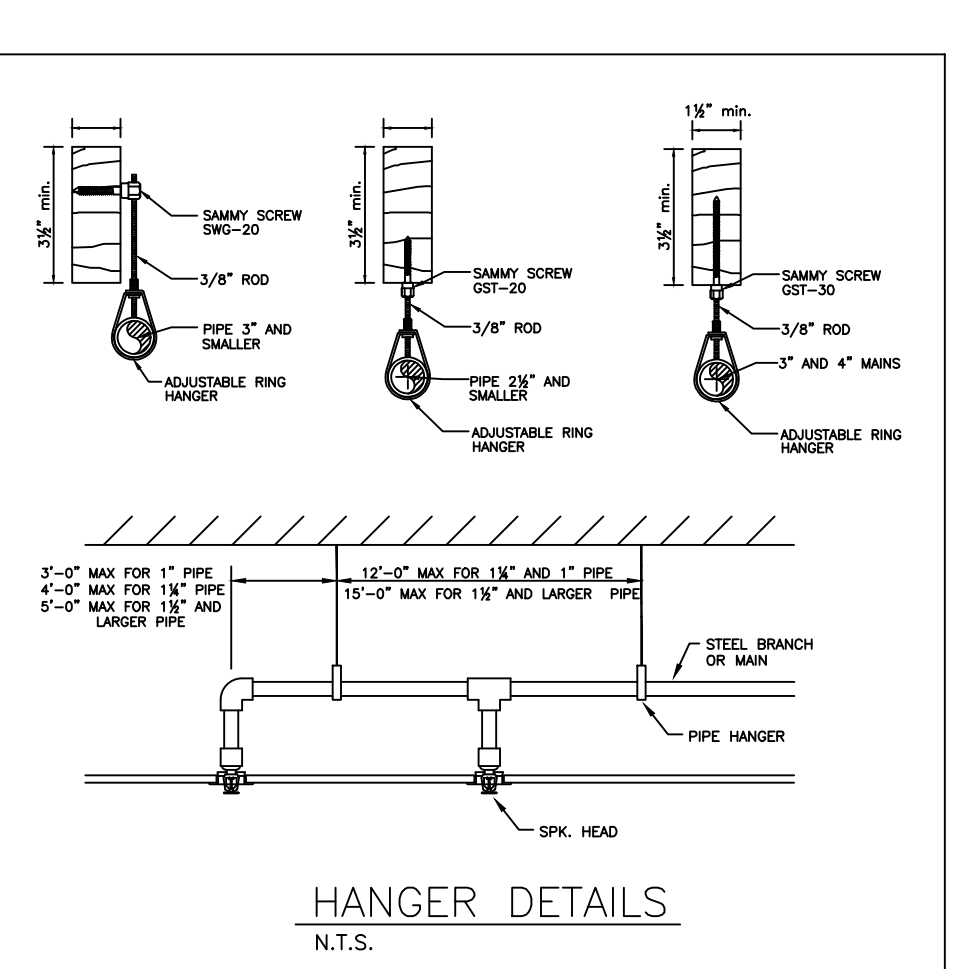


FIRST FLOOR - OPTIONAL ROOM



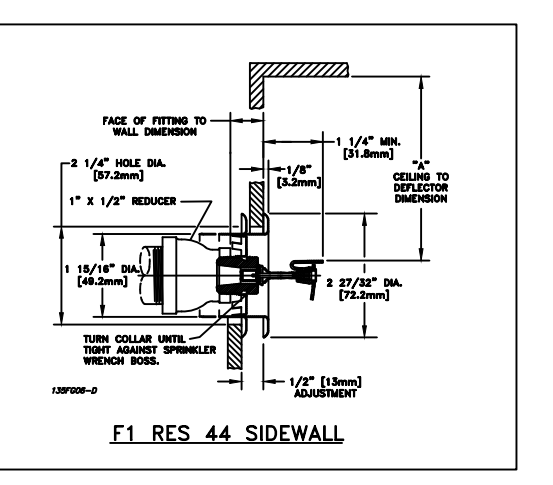
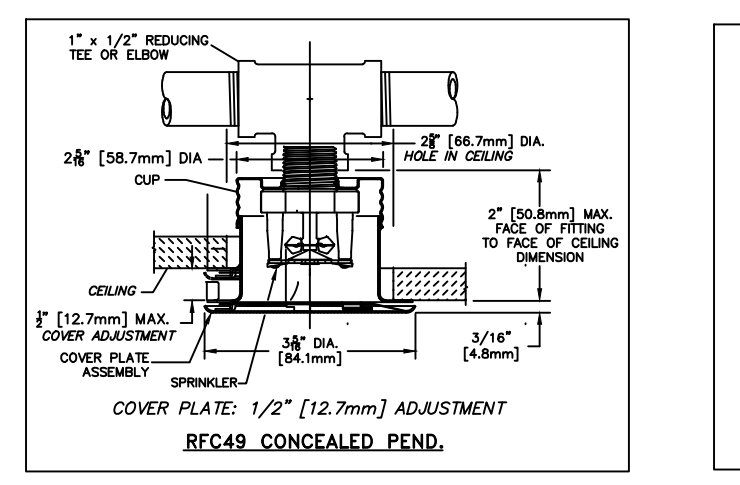
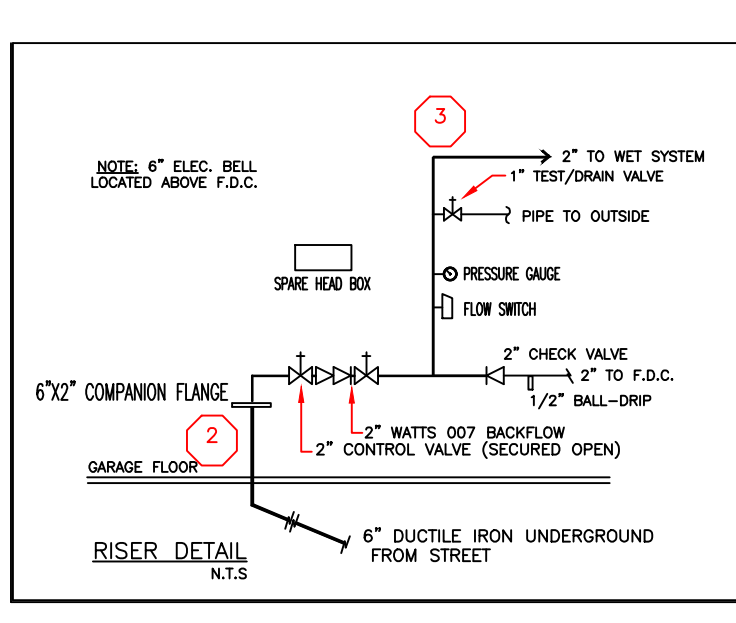
SITE PLAN

TEST AREA #1
15'x60' OPENING - 15'x15' SPACING
FROM PER HEAD - 15'x15' MINIMUM
FROM REFERENCE POINT #1
41.58 PS @ 5.58 GPM
SAFETY MARG. = 1.33 PS



HANGER DETAILS
N.T.S.

FLOW TEST INFORMATION
TEST PERFORMED: 5/16/2017 - 5/19/2017
BY: PORTLAND WATER DEPARTMENT
TESTING PERSONNEL: J. B. GARDNER
TESTING LOCATION: 749 CONGRESS ST.
TESTING RESULTS: 41.58 PS @ 5.58 GPM
FLOWING THROUGH: 15'x60' OPENING
FLOW READING: 1779 GPM



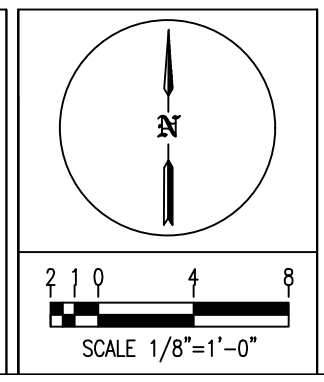
KEYED NOTES

- SPRINKLERS ARE NOT REQUIRED IN BATHROOMS UNDER 55 FT² PER NFPA 13B:6.2
- SPRINKLERS ARE NOT REQUIRED IN CLOTHES CLOSETS AND PANTRIES UNDER 24 SQ. FT. PER NFPA 13B:6.5
- SPRINKLERS ARE NOT REQUIRED IN OPEN PORCHES OR STAIRS PER NFPA 13B:6.5
- SPRINKLERS ARE NOT REQUIRED IN ATTICS, CORN SPACES, ELEVATOR SHAFTS OR CONCEALED SPACES PER NFPA 13B:6.6

GENERAL NOTES:

- NEW APARTMENT BUILDING TO BE PROTECTED WITH AN NFPA 13R COMPLIANT FIRE SPRINKLER SYSTEM.
- WET SINGLE ZONE FIRE SPRINKLER SYSTEM TO PROTECT FIRST THROUGH FOURTH FLOOR LEVELS.
- PIPE SIZED BY HYDRAULIC CALCULATIONS FOR THE PROTECTION OF RESIDENTIAL OCCUPANCY PER NFPA 13R STANDARDS.
- PIPE TO BE LISTED CPVC CONNECTED WITH CPVC FITTINGS. PIPE TO BE SUPPORTED TO NFPA 13 STANDARDS.
- SPRINKLERS OMITTED FROM SMALL BATHS, SMALL CLOSETS, OPEN PORCHES AND CONCEALED SPACES AS PERMITTED BY NFPA 13R, CHAPTER 6, SECTION 6.8.
- OWNER IS RESPONSIBLE TO TEST AND MAINTAIN SYSTEM TO NFPA 13R REQUIREMENTS.

Alternative Sprinkler Fire Protection
39 Jackson Road
Poland Springs, ME
(207) 838-8930
MAINE CONTRACTOR LICENSE NUMBER - F2090



SPRINKLER INFORMATION	
TOTAL HEADS THIS SHEET: 137	TOTAL HEADS THIS JOB: 137
TOTAL COST: \$100,000.00	TOTAL FEES: \$10,000.00
110 SIDEWALL WHITE 150 4.4 1/2" RELIABLE RFI/RES/44 HSW	
121 SIDEWALL WHITE 150 4.4 1" TYCO LFS DRY RES. HSW	
106 PENDENT CONCEALED 150 4.9 1/2" RELIABLE RFI/49	

BRAMHALL ROW 749 CONGRESS STREET PORTLAND, ME		SCALE: 1/8"=1'-0"
CONTRACT WITH		DRAWN BY: JGD
REVISIONS		DATE: 2/2/2018
NO	DATE	DESCRIPTION
JOB NUMBER: SC18001		SHEET NUMBER: F1 of 1