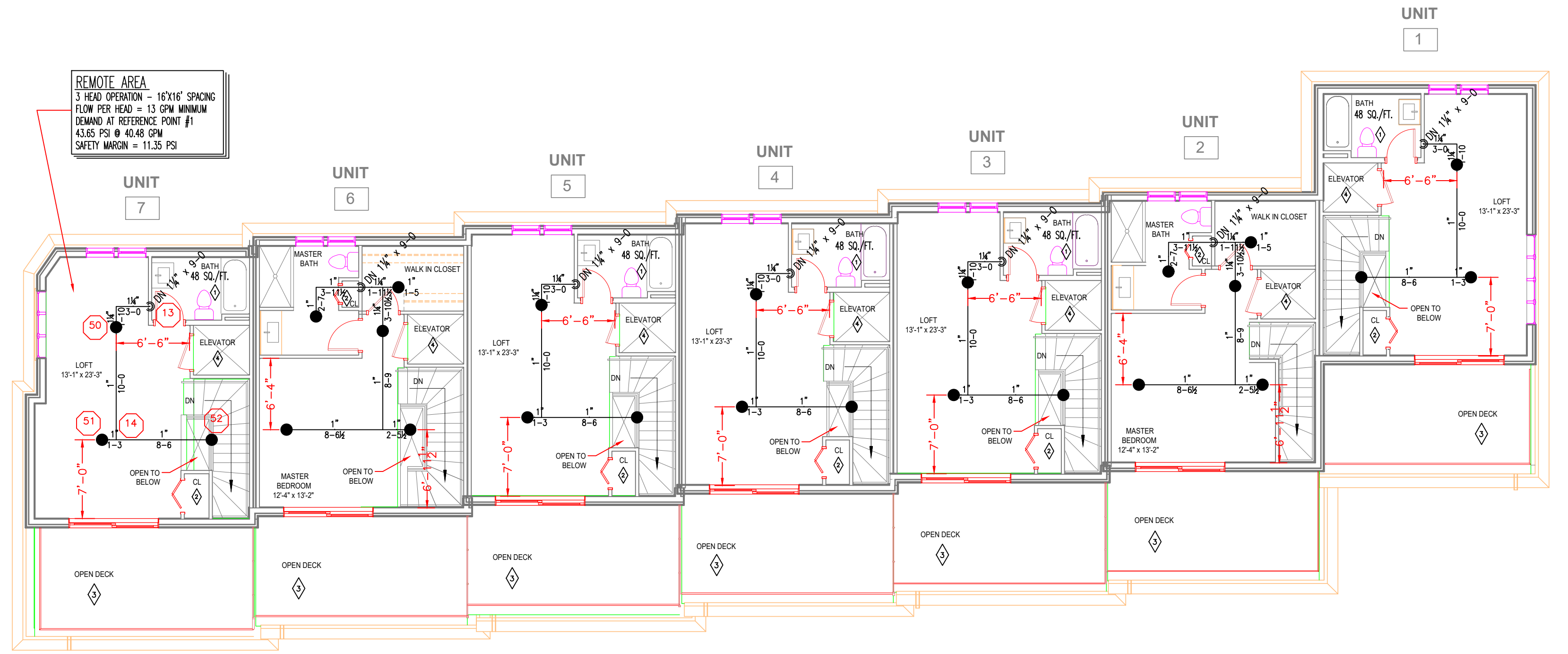
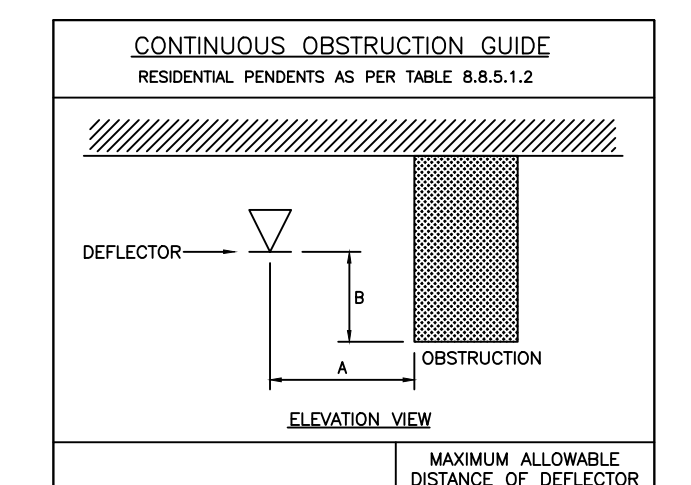
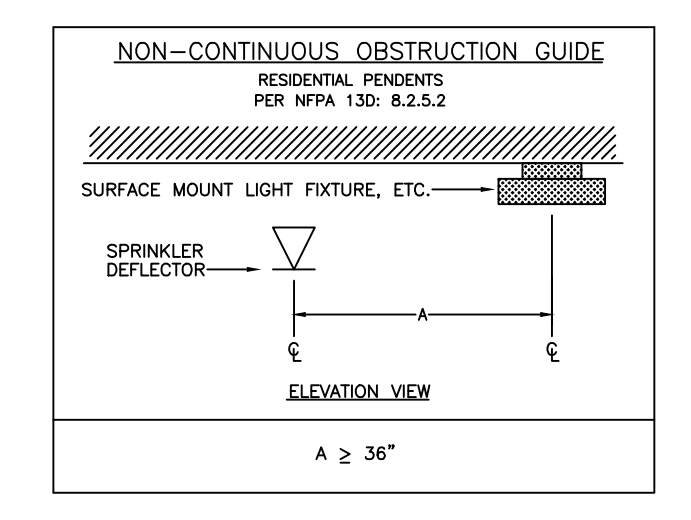
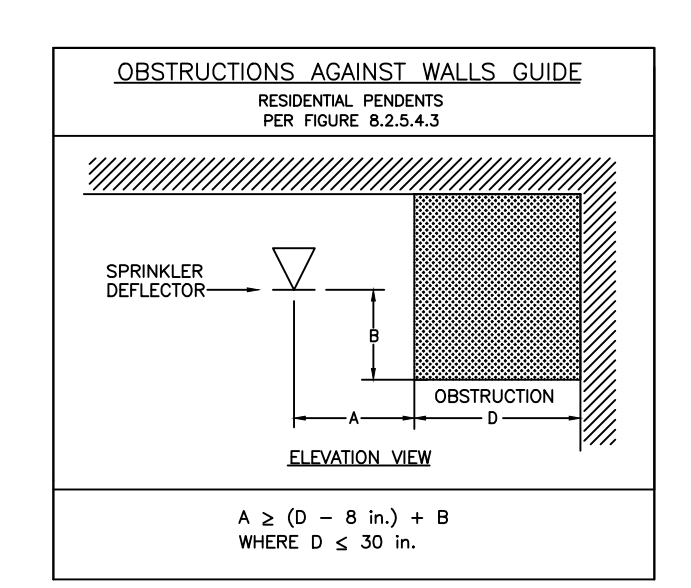


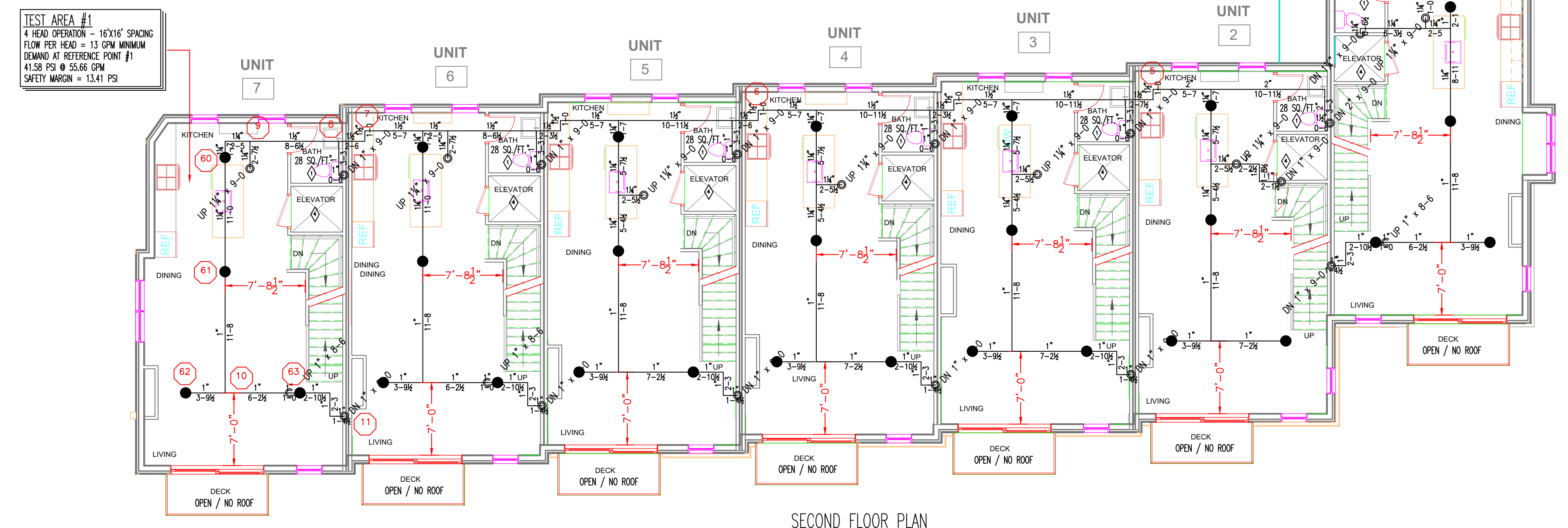
THIRD FLOOR PLAN



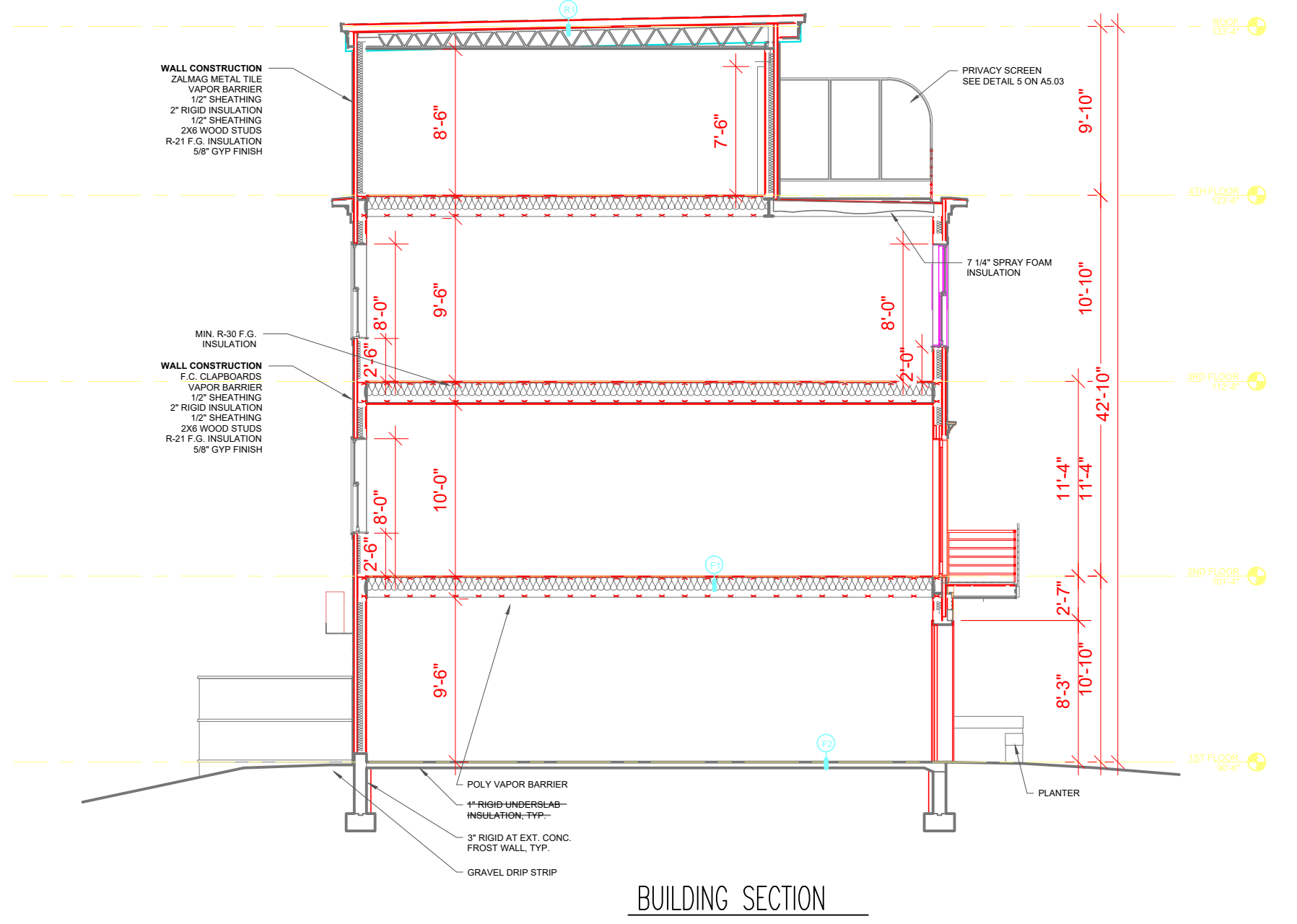
FOURTH FLOOR PLAN



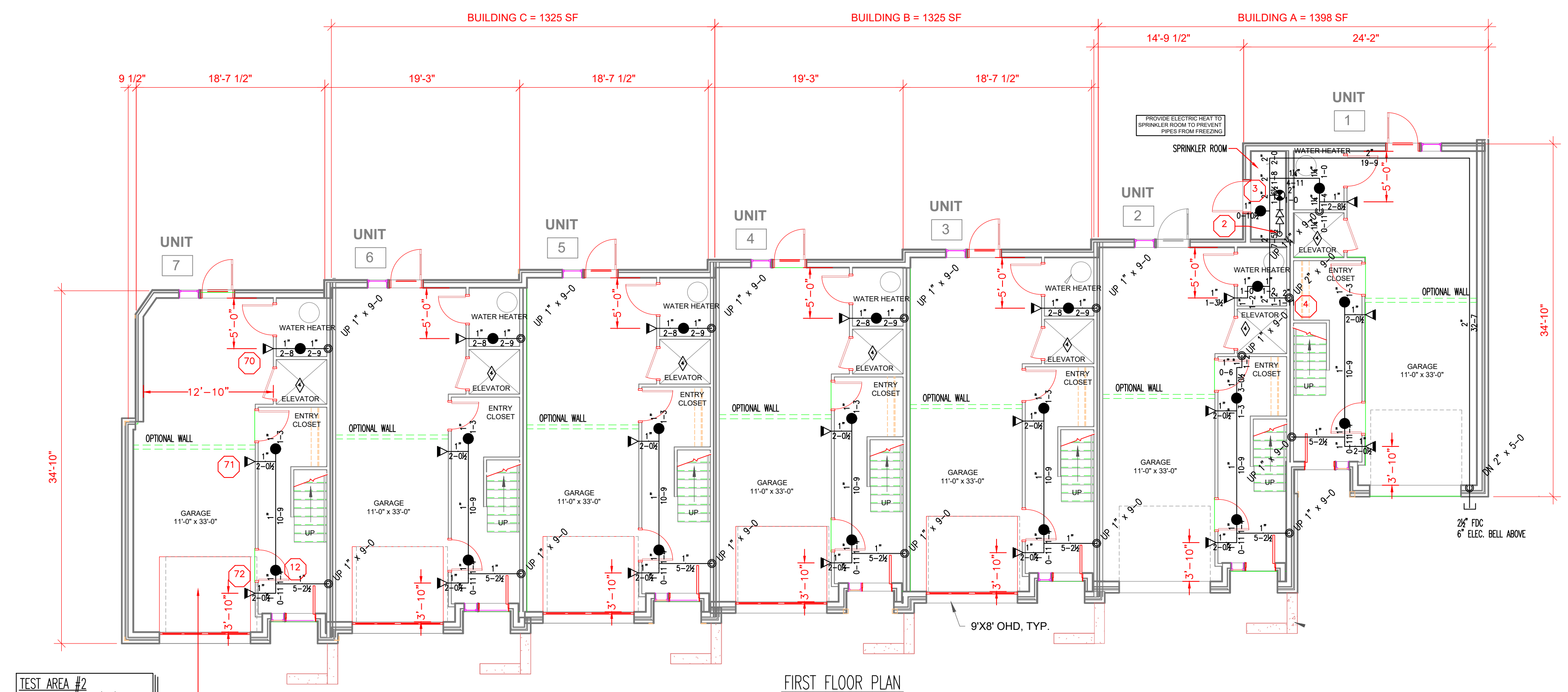
| DISTANCE FROM SPRINKLERS FROM SIDE OF OBSTRUCTION (A) | MAXIMUM ALLOWABLE DISTANCE OF OBSTRUCTION ABOVE BOTTOM OF OBSTRUCTION (B) (ft) |
|---|--|
| LESS THAN 1 FT. | 0 |
| 1 FT. TO LESS THAN 1 FT. 6 IN. | 0 |
| 1 FT. 6 IN. TO LESS THAN 2 FT. | 1 |
| 2 FT. TO LESS THAN 2 FT. 6 IN. | 1 |
| 2 FT. 6 IN. TO LESS THAN 3 FT. | 1 |
| 3 FT. TO LESS THAN 3 FT. 6 IN. | 2 |
| 3 FT. 6 IN. TO LESS THAN 4 FT. | 2 |
| 4 FT. TO LESS THAN 4 FT. 6 IN. | 3 |
| 4 FT. 6 IN. TO LESS THAN 5 FT. | 3 |
| 5 FT. TO LESS THAN 5 FT. 6 IN. | 4 |
| 5 FT. 6 IN. TO LESS THAN 6 FT. | 4 |
| 6 FT. TO LESS THAN 6 FT. 6 IN. | 5 |
| 6 FT. 6 IN. TO LESS THAN 7 FT. | 6 |
| 7 FT. AND GREATER | 7 |



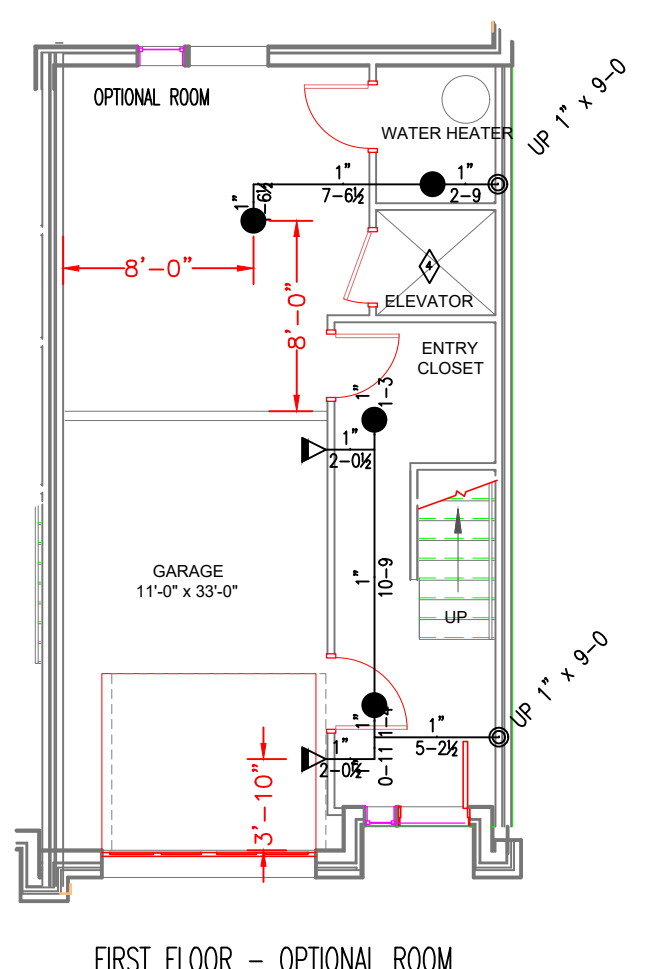
SECOND FLOOR PLAN



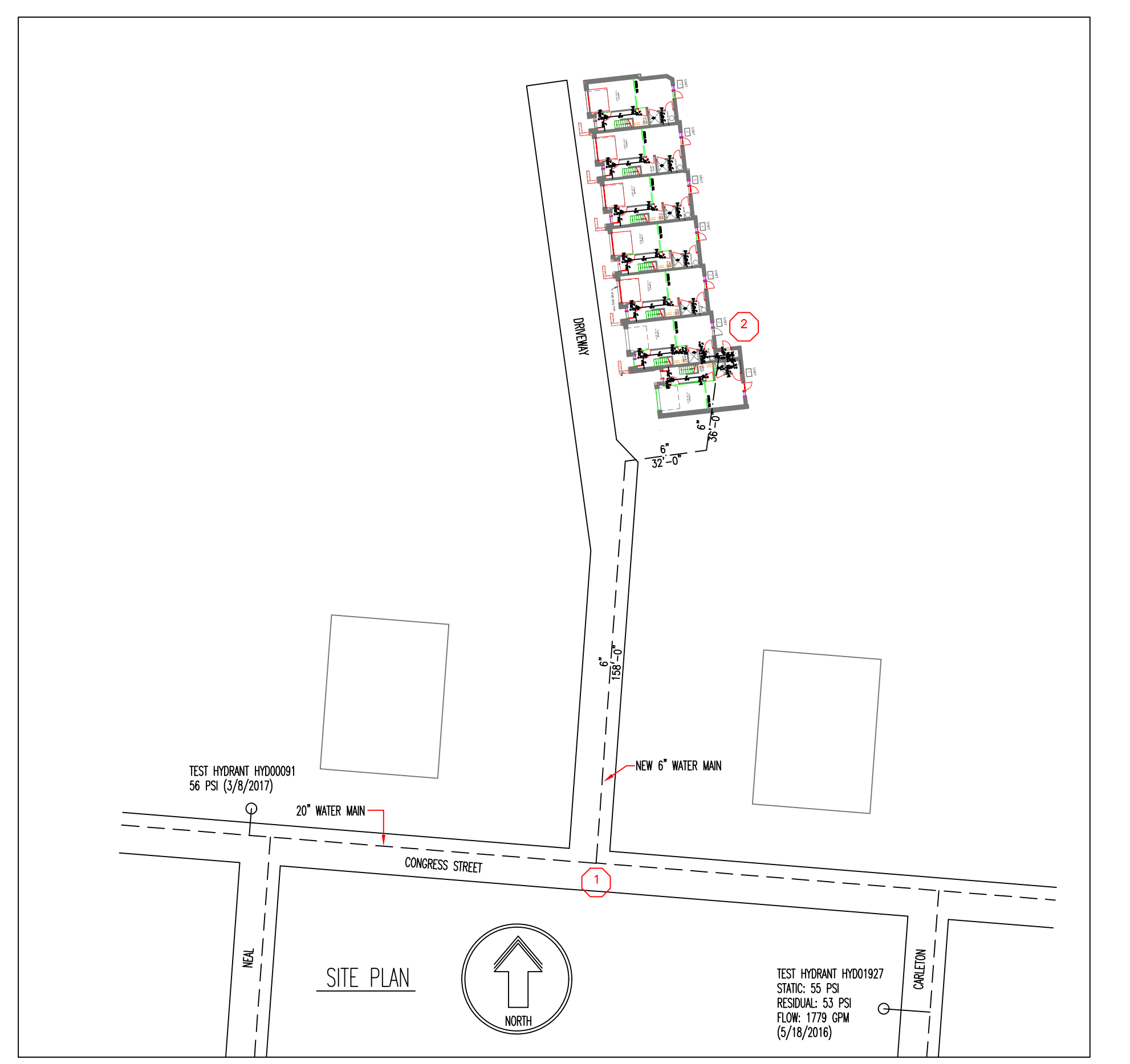
BUILDING SECTION



FIRST FLOOR PLAN

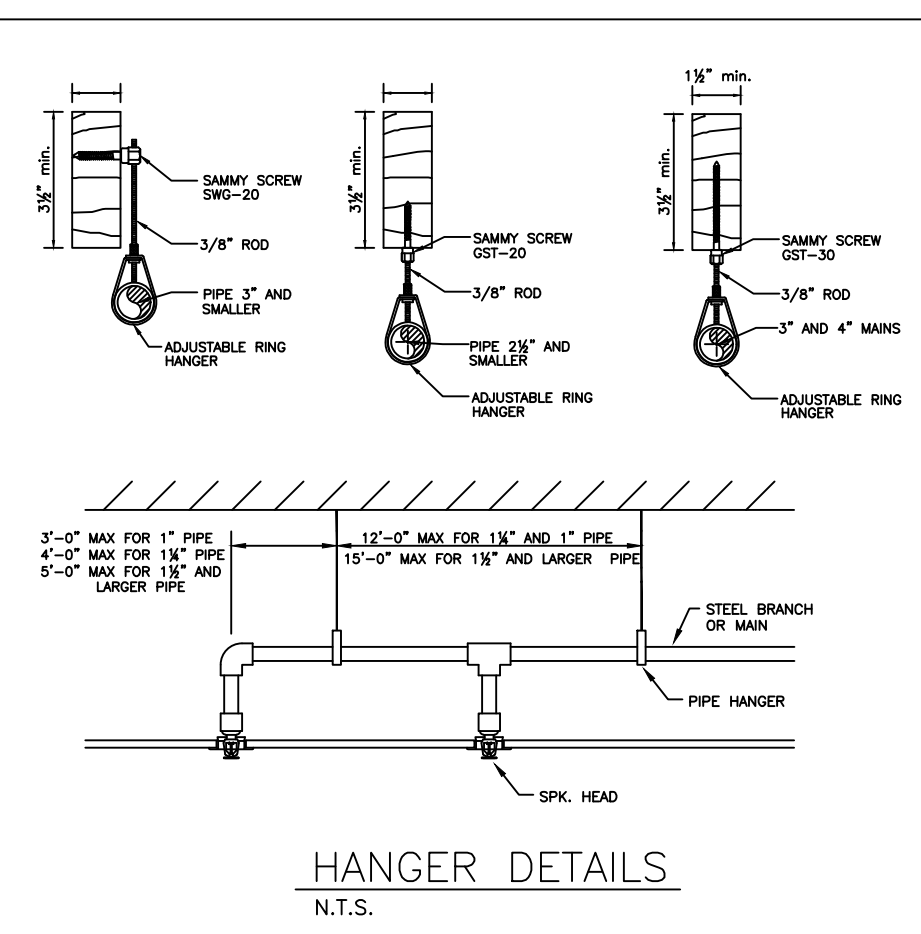


FIRST FLOOR - OPTIONAL ROOM



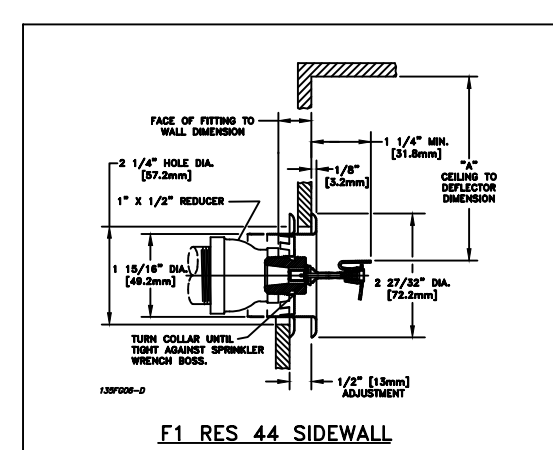
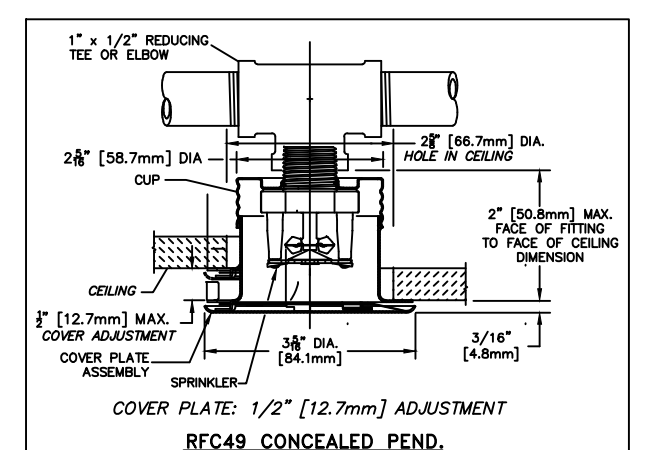
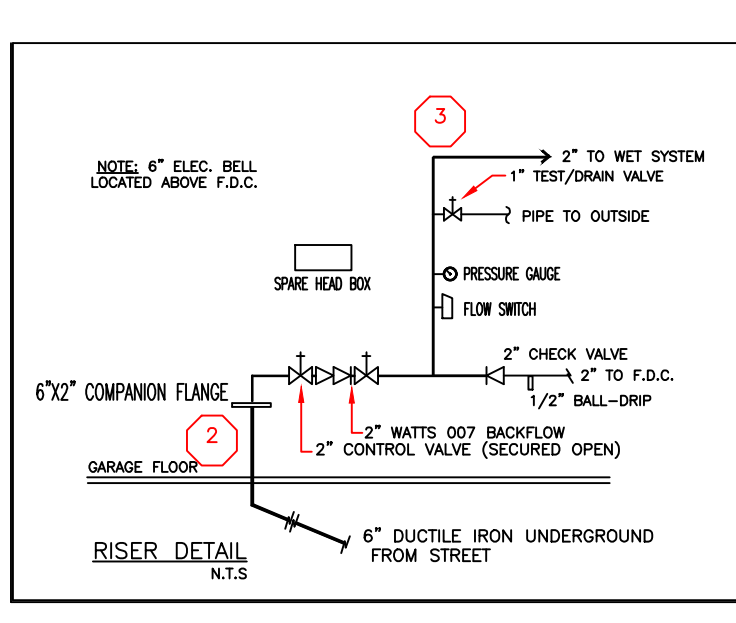
SITE PLAN

TEST AREA #1
15'x60' OPENING - 15'x15' SPACING
FROM PER HEAD - 15'x15' MINIMUM
FROM REFERENCE POINT #1
41.58 PS @ 5.58 GPM
SAFETY MARG. = 1.33 PS



HANGER DETAILS
N.T.S.

FLOW TEST INFORMATION
TEST PERFORMED: 5/16/2017 - 5/19/2017
BY: PORTLAND WATER DEPARTMENT
TESTING PERSONNEL: J. B. BROWN
TESTING LOCATION: 749 CONGRESS ST.
TESTING RESULTS:
FLOW RATE: 1779 GPM
PRESSURE: 17.79 PSI



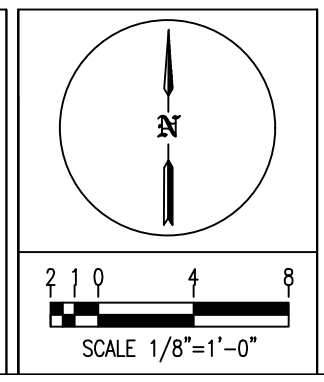
KEYED NOTES

- 1) SPRINKLERS ARE NOT REQUIRED IN BATHROOMS UNDER 55 FT² PER NFPA 13B:6.2
- 2) SPRINKLERS ARE NOT REQUIRED IN CLOTHES CLOSETS AND PANTRIES UNDER 24 SQ. FT. PER NFPA 13B:6.5
- 3) SPRINKLERS ARE NOT REQUIRED IN OPEN PORCHES OR STAIRS PER NFPA 13B:6.5
- 4) SPRINKLERS ARE NOT REQUIRED IN ATTICS, CORN. SPACES, ELEVATOR SHAFTS OR CONCEALED SPACES PER NFPA 13B:6.6

GENERAL NOTES:

- 1) NEW APARTMENT BUILDING TO BE PROTECTED WITH AN NFPA 13R COMPLIANT FIRE SPRINKLER SYSTEM.
- 2) WET SINGLE ZONE FIRE SPRINKLER SYSTEM TO PROTECT FIRST THROUGH FOURTH FLOOR LEVELS.
- 3) PIPE SIZED BY HYDRAULIC CALCULATIONS FOR THE PROTECTION OF RESIDENTIAL OCCUPANCY PER NFPA 13R STANDARDS.
- 4) PIPE TO BE LISTED CPVC CONNECTED WITH CPVC FITTINGS. PIPE TO BE SUPPORTED TO NFPA 13 STANDARDS.
- 5) SPRINKLERS OMITTED FROM SMALL BATHS, SMALL CLOSETS, OPEN PORCHES AND OCCUPIABLE CONCEALED SPACES AS PERMITTED BY NFPA 13R, CHAPTER 6, SECTION 6.8.
- 6) OWNER IS RESPONSIBLE TO TEST AND MAINTAIN SYSTEM TO NFPA 13R REQUIREMENTS.

Alternative Sprinkler Fire Protection
39 Jackson Road
Poland Springs, ME
(207) 838-8930
MADE CONTRACTOR LICENSE NUMBER - F2090



| SPRINKLER INFORMATION | |
|---|---------------------------|
| TOTAL HEADS THIS SHEET: 137 | TOTAL HEADS THIS JOB: 137 |
| TOTAL COST: \$100,000.00 | TOTAL COST: \$100,000.00 |
| 110 SIDEWALL WHITE 150 4.4 1/2" RELIABLE F1/PRES/44 HSW | |
| 21 SIDEWALL WHITE 150 4.4 1" TYCO LFS DRY RES. HSW | |
| 106 PENDENT CONCEALED 150 4.9 1/2" RELIABLE RFC49 | |

| BRAMHALL ROW 749 CONGRESS STREET PORTLAND, ME | |
|---|-----------------------|
| CONTRACT WITH | SCALE: 1/8"=1'-0" |
| NO. DATE | DRAWN BY: JGD |
| REVISIONS | DATE: 2/2/2018 |
| | JOB NUMBER: SC18001 |
| | SHEET NUMBER: F1 of 1 |