

Prepared For:  
**747 CONGRESS LLC**

Consulting Engineer:  
**BENNETT ENGINEERING**  
 MECHANICAL • ELECTRICAL  
 (207) 865-9475

Architect:  
**ARCHETYPE architects**  
 48 Union Wharf Portland, Maine 04101  
 (207) 772-6022 Fax (207) 772-4056

Project:  
**FRANCIS INN**  
 749 CONGRESS ST  
 PORTLAND, ME 04102

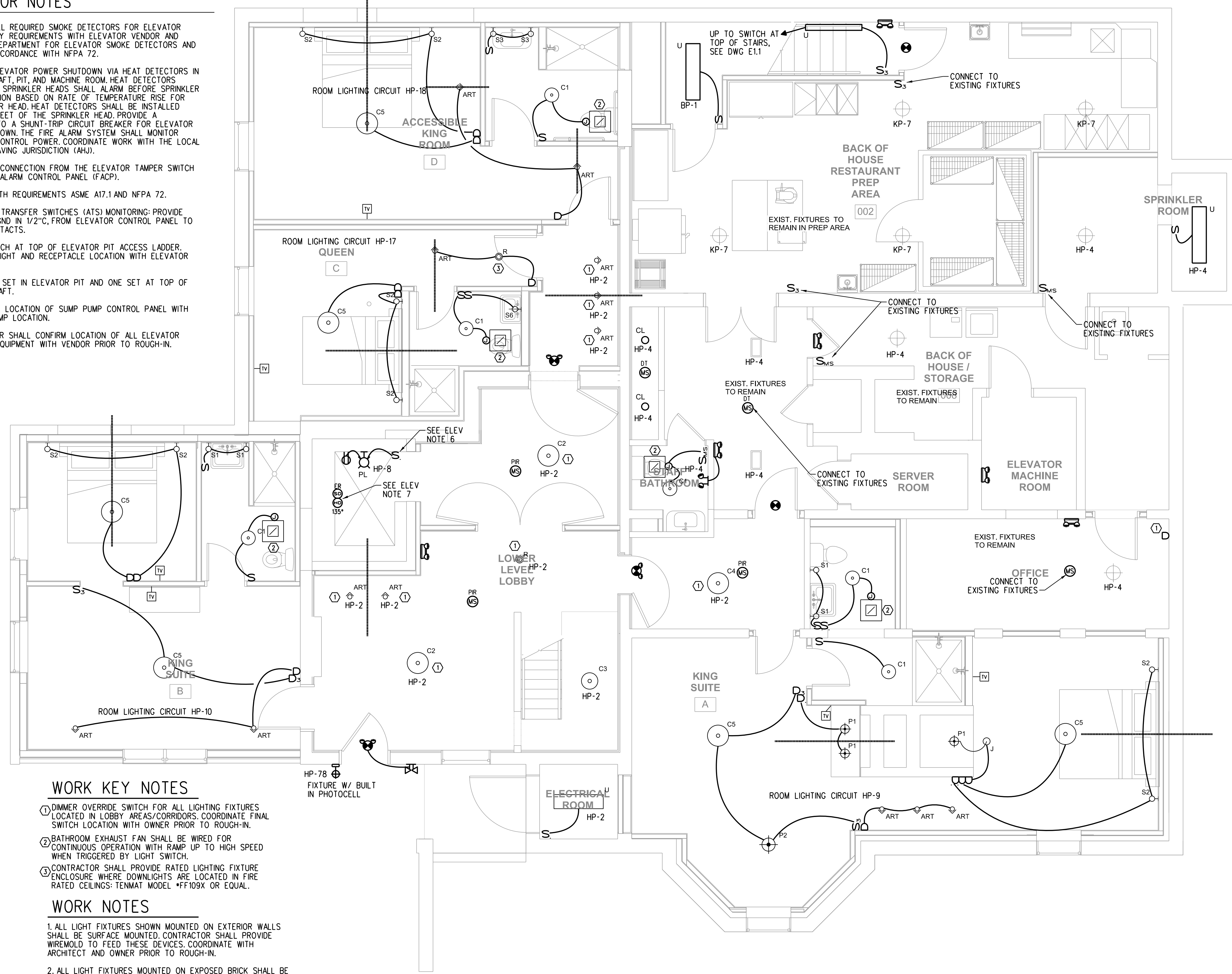
Revisions:	4/06/17-FINAL REVISIONS
------------	-------------------------

Date: 04/10/2017  
 Scale: As Noted  
**GROUND FLOOR LIGHTING PLAN**

**E1.0**

**ELEVATOR NOTES**

1. CONNECT ALL REQUIRED SMOKE DETECTORS FOR ELEVATOR RECALL. VERIFY REQUIREMENTS WITH ELEVATOR VENDOR AND LOCAL FIRE DEPARTMENT FOR ELEVATOR SMOKE DETECTORS AND INSTALL IN ACCORDANCE WITH NFPA 72.
2. PROVIDE ELEVATOR POWER SHUTDOWN VIA HEAT DETECTORS IN ELEVATOR SHAFT, PIT, AND MACHINE ROOM. HEAT DETECTORS ADJACENT TO SPRINKLER HEADS SHALL ALARM BEFORE SPRINKLER HEAD ACTIVATION BASED ON RATE OF TEMPERATURE RISE FOR THE SPRINKLER HEAD. HEAT DETECTORS SHALL BE INSTALLED WITHIN TWO FEET OF THE SPRINKLER HEAD. PROVIDE A CONNECTION TO A SHUNT-TRIP CIRCUIT BREAKER FOR ELEVATOR POWER SHUTDOWN. THE FIRE ALARM SYSTEM SHALL MONITOR SHUNT TRIP CONTROL POWER. COORDINATE WORK WITH THE LOCAL AUTHORITY HAVING JURISDICTION (AHJ).
3. PROVIDE A CONNECTION FROM THE ELEVATOR TAMPER SWITCH TO THE FIRE ALARM CONTROL PANEL (FACP).
4. COMPLY WITH REQUIREMENTS ASME A17.1 AND NFPA 72.
5. AUTOMATIC TRANSFER SWITCHES (ATS) MONITORING: PROVIDE 2\*14AWG-1\*14GND IN 1/2" C, FROM ELEVATOR CONTROL PANEL TO ATS DRY CONTACTS.
6. PLACE SWITCH AT TOP OF ELEVATOR PIT ACCESS LADDER. COORDINATE LIGHT AND RECEPTACLE LOCATION WITH ELEVATOR SUMP.
7. PLACE ONE SET IN ELEVATOR PIT AND ONE SET AT TOP OF ELEVATOR SHAFT.
8. COORDINATE LOCATION OF SUMP PUMP CONTROL PANEL WITH ELEVATOR SUMP LOCATION.
9. CONTRACTOR SHALL CONFIRM LOCATION OF ALL ELEVATOR ASSOCIATED EQUIPMENT WITH VENDOR PRIOR TO ROUGH-IN.



**WORK KEY NOTES**

1. DIMMER OVERRIDE SWITCH FOR ALL LIGHTING FIXTURES LOCATED IN LOBBY AREAS/CORRIDORS. COORDINATE FINAL SWITCH LOCATION WITH OWNER PRIOR TO ROUGH-IN.
2. BATHROOM EXHAUST FAN SHALL BE WIRED FOR CONTINUOUS OPERATION WITH RAMP UP TO HIGH SPEED WHEN TRIGGERED BY LIGHT SWITCH.
3. CONTRACTOR SHALL PROVIDE RATED LIGHTING FIXTURE ENCLOSURE WHERE DOWNLIGHTS ARE LOCATED IN FIRE RATED CEILINGS: TENMAT MODEL #FF109X OR EQUAL.

**WORK NOTES**

1. ALL LIGHT FIXTURES SHOWN MOUNTED ON EXTERIOR WALLS SHALL BE SURFACE MOUNTED. CONTRACTOR SHALL PROVIDE WIREMOLD TO FEED THESE DEVICES. COORDINATE WITH ARCHITECT AND OWNER PRIOR TO ROUGH-IN.
2. ALL LIGHT FIXTURES MOUNTED ON EXPOSED BRICK SHALL BE SURFACE MOUNTED. CONTRACTOR SHALL PROVIDE WIREMOLD TO FEED THESE DEVICES. COORDINATE WITH ARCHITECT AND OWNER PRIOR TO ROUGH-IN.

**GROUND FLOOR PLAN**

SCALE: 1/4" = 1'-0"