

HOOD INFORMATION - Job#2743111

HOOD NO.	TAG	MODEL	LENGTH	MAX. COOKING TEMP.	EXHAUST PLENUM RISER(S)							TOTAL SUPPLY CFM	HOOD CONSTRUCTION	HOOD CONFIG.	
					TOTAL EXH. CFM	WIDTH	LENG.	HEIGHT	DIA.	CFM	S.P.			END TO END	ROW
1		5424 ND-2-PSP-F	9' 0.00'	600 Deg.	2250	10'	21'	4'		2250	-0.734'	2025	430 SS Where Exposed	ALONE	ALONE

PATENT NUMBERS

AC-PSP (United States) - US Patent 7963830 B2
 AC-PSP Wall (Canada) - CA Patent 2820509
 AC-PSP Island (Canada) - CA Patent 2520330

HOOD INFORMATION

HOOD NO.	TAG	FILTER(S)					LIGHT(S)				UTILITY CABINET(S)				FIRE SYSTEM PIPING	HOOD HANGING WGHT	
		TYPE	QTY.	HEIGHT	LENGTH	EFFICIENCY @ 9 MICRONS	QTY.	TYPE	WIRE GUARD	LOCATION	SIZE	FIRE SYSTEM		ELECTRICAL			SWITCHES
												TYPE	SIZE	MODEL #			QUANTITY
1		Captrate Solo Filter	6	20"	16"	85% See Filter Spec.	3	Screw In Compact	NO	Left	12"x54"x24"			SC-21110FP	1 Light 1 Fan	NO	685 LBS

HOOD OPTIONS

HOOD NO.	TAG	OPTION
1		FIELD WRAPPER 18.00' High Front, Left, Right
		BACKSPLASH 80.00' High X 121.00' Long 430 SS Vertical
		RIGHT END STANDOFF (FINISHED) 1' Wide 54' Long Insulated
		LEFT QUARTER END PANEL 23' Top Width, 0' Bottom Width, 23' High 430 SS
		RIGHT QUARTER END PANEL 23' Top Width, 0' Bottom Width, 23' High 430 SS
		INSULATION FOR BACK OF HOOD

PERFORATED SUPPLY PLENUM(S)

HOOD NO.	TAG	POS.	LENGTH	WIDTH	HEIGHT	TYPE	RISER(S)				
							WIDTH	LENG.	DIA.	CFM	S.P.
1		Front	121'	18'	6'	MUA	12"	28"		675	0.173'
						MUA	12"	28"		675	0.173'
						MUA	12"	28"		675	0.173'

SPECIFICATION: CAPTRATE® GREASE-STOP® SOLO FILTER

THE CAPTRATE GREASE-STOP SOLO FILTER IS A SINGLE-STAGE FILTER FEATURING A UNIQUE S-Baffle DESIGN IN CONJUNCTION WITH A SLOTTED REAR Baffle DESIGN, TO DELIVER EXCEPTIONAL FILTRATION EFFICIENCY.

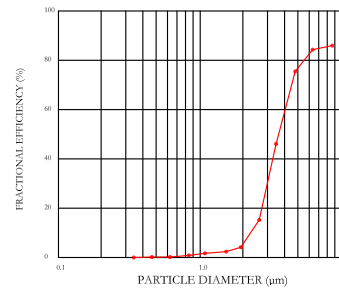
FILTER IS STAINLESS STEEL CONSTRUCTION, AND SIZED TO FIT INTO STANDARD 2-INCH DEEP HOOD CHANNEL(S).

UNITS SHALL INCLUDE STAINLESS STEEL HANDLES AND A FASTENING DEVICE TO SECURE THE TWO COMPONENTS WHEN ASSEMBLED.

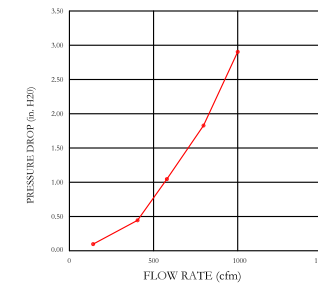
GREASE EXTRACTION EFFICIENCY PERFORMANCE SHALL REMOVE AT LEAST 75% OF GREASE PARTICLES FIVE MICRONS IN SIZE, AND 85% GREASE PARTICLES NINE MICRONS IN SIZE AND LARGER, WITH A CORRESPONDING PRESSURE DROP NOT TO EXCEED 1.0 INCHES OF WATER GAUGE.

THE CAPTRATE GREASE-STOP SOLO WAS TESTED TO ASTM STANDARD ASTM F2519-05.

EFFICIENCY VS. PARTICLE DIAMETER



PRESSURE DROP VS. FLOW RATE



CAPTRATE FILTERS ARE BUILT IN COMPLIANCE WITH:
 NFPA #96
 NSF STANDARD #2
 UL STANDARD #1046
 INT. MECH. CODE (IMC)
 ULC-S649



CUSTOMER APPROVAL TO MANUFACTURE:

Approved as Noted

Approved with NO Exception Taken

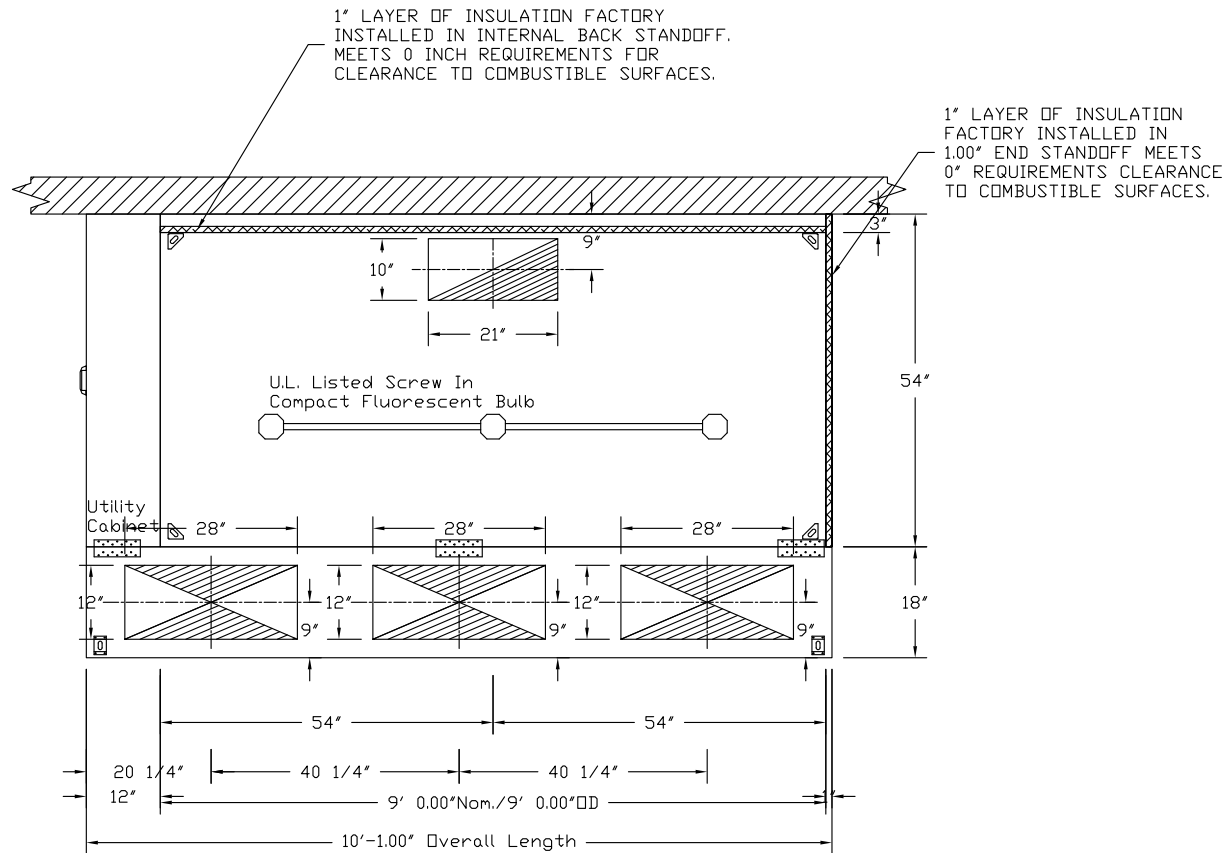
Revise and Resubmit

SIGNATURE _____

Your Title _____ Date _____



JOB Francis Inn	
LOCATION WESTBROOK, ME,	
DATE 4/13/2017	JOB # 2743111
DWG # 1	DRAWN BY BFC-21
REV.	SCALE 3/8" = 1'-0"



PLAN VIEW - Hood #1
 9' 0.00" LONG 5424ND-2-PSP-F

CUSTOMER APPROVAL TO MANUFACTURE:

Approved as Noted

Approved with NO Exception Taken

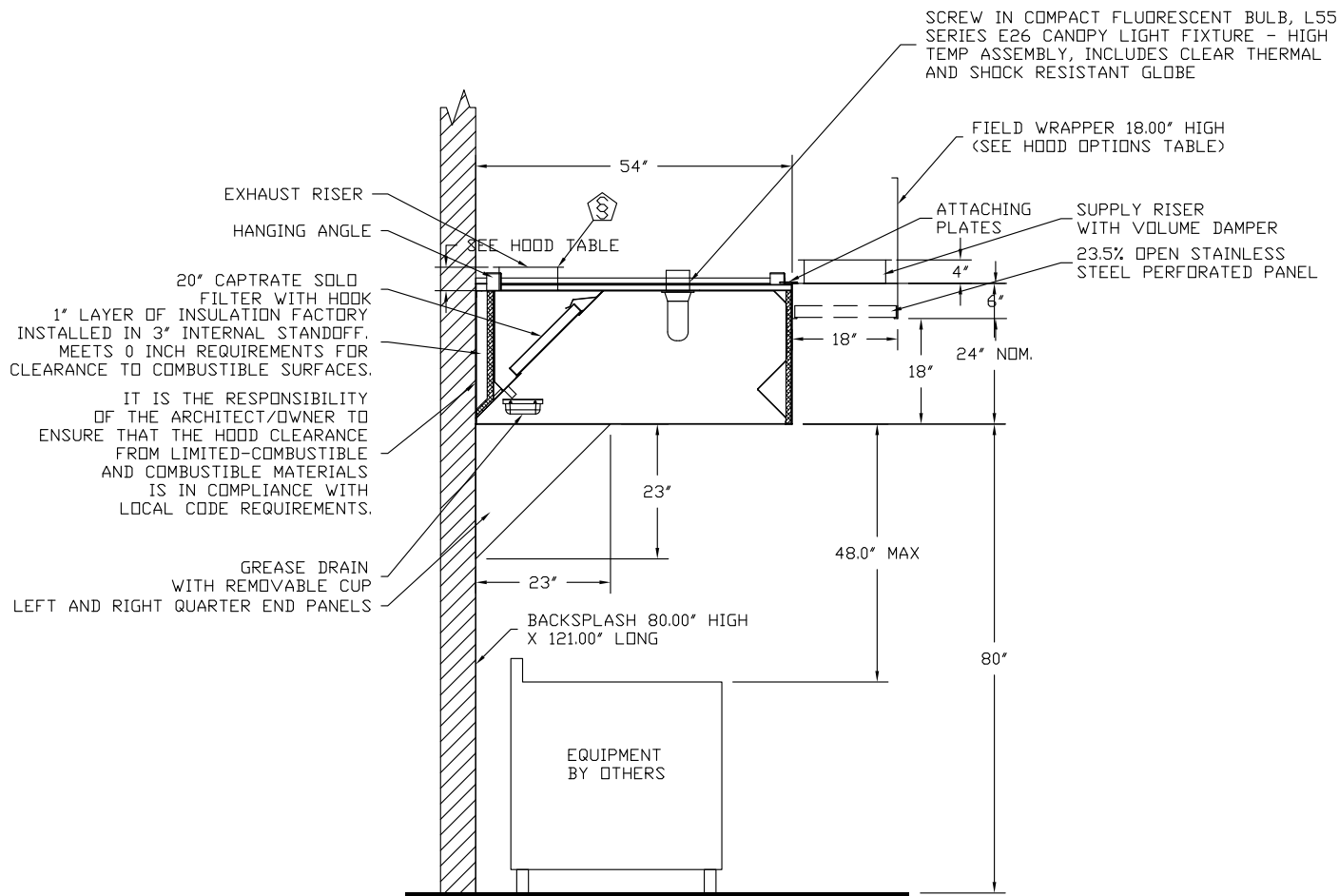
Revise and Resubmit

SIGNATURE _____

Your Title _____ Date _____



JOB Francis Inn	
LOCATION WESTBROOK, ME,	
DATE 4/13/2017	JOB # 2743111
DWG # 2	DRAWN BY BFC-21
REV.	SCALE 3/8" = 1'-0"



**SECTION VIEW - MODEL 5424ND-2-PSP-F
HOOD - #1**

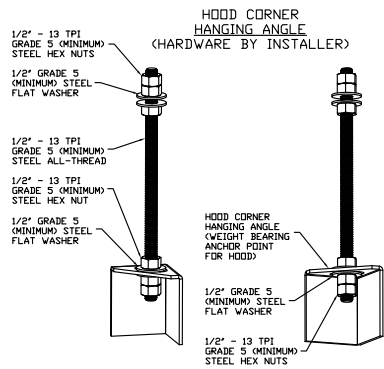
CUSTOMER APPROVAL TO MANUFACTURE:

- Approved as Noted
- Approved with NO Exception Taken
- Revise and Resubmit

SIGNATURE _____
Your Title _____ Date _____

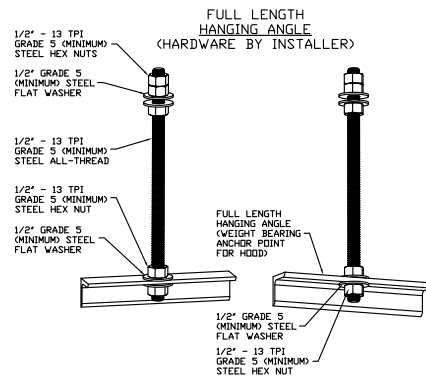


JOB Francis Inn	
LOCATION WESTBROOK, ME,	
DATE 4/13/2017	JOB # 2743111
DWG # 3	DRAWN BY BFC-21
REV.	SCALE 3/8" = 1'-0"



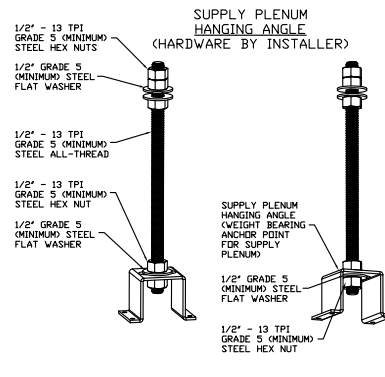
ASSEMBLY INSTRUCTIONS

HANGING ANGLE MUST BE SUPPORTED WITH 1/2" - 13 TPI GRADE 5 (MINIMUM) ALL-THREAD. SANDWICH HANGING ANGLES AND CEILING ANCHOR POINTS WITH 1/2" GRADE 5 (MINIMUM) STEEL FLAT WASHERS AND 1/2" - 13 TPI GRADE 5 (MINIMUM) HEX NUTS AS SHOWN. MUST USE DOUBLED HEX NUT CONFIGURATION BENEATH HOOD HANGING ANGLES AND ABOVE CEILING ANCHORS. MAINTAIN 1/4" OF EXPOSED THREADS BENEATH BOTTOM HEX NUT. TORQUE ALL HEX NUTS TO 57 FT-LBS.



ASSEMBLY INSTRUCTIONS

HANGING ANGLE MUST BE SUPPORTED WITH 1/2" - 13 TPI GRADE 5 (MINIMUM) ALL-THREAD. SANDWICH HANGING ANGLES AND CEILING ANCHOR POINTS WITH 1/2" GRADE 5 (MINIMUM) STEEL FLAT WASHERS AND 1/2" - 13 TPI GRADE 5 (MINIMUM) HEX NUTS AS SHOWN. MUST USE DOUBLED HEX NUT CONFIGURATION ABOVE CEILING ANCHORS. SINGLE HEX NUT BENEATH HANGING ANGLE IS ACCEPTABLE FOR FULL LENGTH HANGING ANGLES. MAINTAIN 1/4" OF EXPOSED THREADS BENEATH BOTTOM HEX NUT. TORQUE ALL HEX NUTS TO 57 FT-LBS.



ASSEMBLY INSTRUCTIONS

HANGING ANGLE MUST BE SUPPORTED WITH 1/2" - 13 TPI GRADE 5 (MINIMUM) ALL-THREAD. SANDWICH HANGING ANGLES AND CEILING ANCHOR POINTS WITH 1/2" GRADE 5 (MINIMUM) STEEL FLAT WASHERS AND 1/2" - 13 TPI GRADE 5 (MINIMUM) HEX NUTS AS SHOWN. MUST USE DOUBLED HEX NUT CONFIGURATION ABOVE CEILING ANCHORS. SINGLE HEX NUT BENEATH HANGING ANGLE IS ACCEPTABLE FOR PSP HANGING ANGLES. MAINTAIN 1/4" OF EXPOSED THREADS BENEATH BOTTOM HEX NUT. TORQUE ALL HEX NUTS TO 57 FT-LBS.

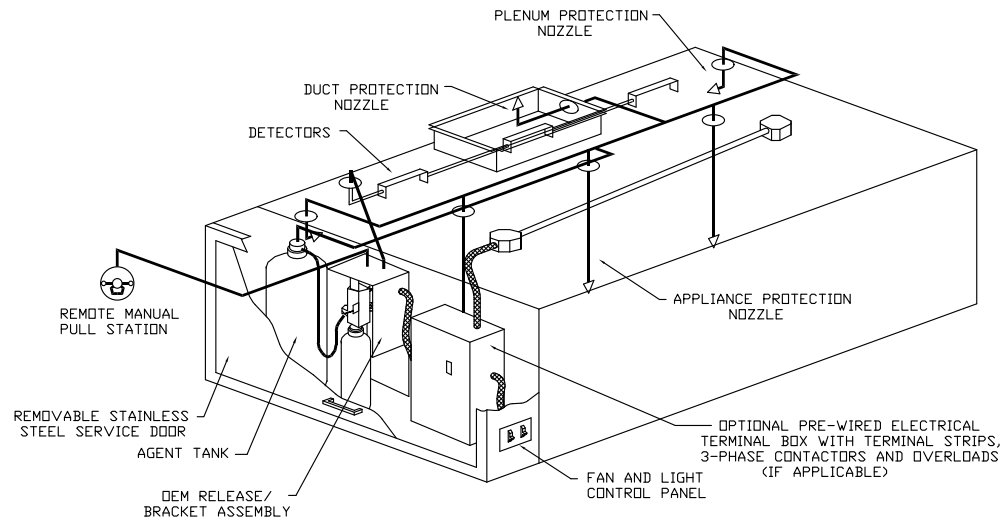
SPECIFICATIONS

THE RESTAURANT FIRE SUPPRESSION SYSTEM SHALL BE THE PRE-ENGINEERED TYPE WITH A FIXED NOZZLE AGENT DISTRIBUTION NETWORK. IT SHALL BE LISTED WITH UNDERWRITERS LABORATORIES, INC. (UL)

THE SYSTEM SHALL BE CAPABLE OF AUTOMATIC DETECTION AND ACTUATION WITH LOCAL OR REMOTE MANUAL ACTUATION. ACCESSORIES SHALL BE AVAILABLE FOR MECHANICAL OR ELECTRICAL GAS LINE SHUT-OFF APPLICATIONS.

THE EXTINGUISHING AGENT SHALL BE A POTASSIUM CARBONATE, POTASSIUM ACETATE-BASED FORMULATION DESIGNED FOR FLAME KNOCKDOWN AND SECUREMENT OF GREASE RELATED FIRES. IT SHALL BE AVAILABLE IN PLASTIC CONTAINERS WITH INSTRUCTIONS FOR LIQUID AGENT HANDLING AND USAGE.

THE REGULATED RELEASE MECHANISM SHALL BE COMPATIBLE WITH A FUSIBLE LINK DETECTION SYSTEM. THE FUSIBLE LINK SHALL BE SELECTED AND INSTALLED ACCORDING TO THE OPERATING TEMPERATURE IN THE VENTILATING SYSTEM. THE FUSIBLE LINK SHALL BE SUPPORTED BY A DETECTOR BRACKET/LINKAGE ASSEMBLY.



TYPICAL ANSUL R-102 SYSTEM LAYOUT

CUSTOMER APPROVAL TO MANUFACTURE:

Approved as Noted

Approved with NO Exception Taken

Revise and Resubmit

SIGNATURE _____

Your Title _____ Date _____



JOB Francis Inn	
LOCATION WESTBROOK, ME,	
DATE 4/13/2017	JOB # 2743111
DWG # 4	DRAWN BY BFC-21
REV.	SCALE 3/8" = 1'-0"

EXHAUST FAN INFORMATION - Job#2743111

FAN UNIT NO.	TAG	FAN UNIT MODEL #	CFM	ESP.	RPM	H.P.	B.H.P.	Ø	VOLT	FLA	WEIGHT (LBS.)	SONES
1		NCA16HPFA	2250	1.500	1277	1.500	1.0000	1	230	6.8	203	12
3	DISH HOOD EXHAUST	DU33HFA	800	0.250	1342	0.333	0.1640	1	115	4.4	102	9.4

MUA FAN INFORMATION - Job#2743111

FAN UNIT NO.	TAG	FAN UNIT MODEL #	BLOWER	HOUSING	DESIGN CFM	ESP.	RPM	H.P.	B.H.P.	Ø	VOLT	FLA	WEIGHT (LBS.)	SONES	BURNER EFFICIENCY(%)
2		A1-D.250-G10	G10	A1-D.250	2025	0.500	1083	1.500	0.8580	1	230	6.8	697	18.7	92

GAS FIRED MAKE-UP AIR UNIT(S)

FAN UNIT NO.	TAG	INPUT BTUs	OUTPUT BTUs	TEMP. RISE	REQUIRED INPUT GAS PRESSURE	GAS TYPE
2		202060	185895	85 deg F	7 in. w.c. - 14 in. w.c.	Natural

FAN OPTIONS

FAN UNIT NO.	TAG	OPTION (Qty. - Descr.)
1		1 - Grease Box
		1 - Full Crating For Exhaust Fans
		1 - 3 Year Extended Motor Warranty
		1 - Extra Set of Belts
2		1 - Fan Base Ceramic Seal - Ship Loose - For Grease Ducts
		1 - AC Interlock Relay - 24VAC Coil
		1 - Motorized Backdraft Damper for A1-D Housing
		1 - Full Crating For Commercial Heater
		1 - Low Fire Start
		1 - Inlet Pressure Gauge, 0-35"
		1 - Manifold Pressure Gauge, ~5 to 15' wc
3	DISH HOOD EXHAUST	1 - Extra Set of Belts
		1 - 3 Year Extended Motor Warranty
		1 - Full Crating For Exhaust Fans
		1 - 3 Year Extended Motor Warranty
		1 - SCR-11 Bird Screen
3	DISH HOOD EXHAUST	1 - I 15-BDD Damper
		1 - ECM Wiring Package-Exhaust - Manual or 0-10VDC Reference Speed Control (NIDEK Motor)

FAN ACCESSORIES

FAN UNIT NO.	TAG	EXHAUST			SUPPLY			
		GREASE CUP	GRAVITY DAMPER	WALL MOUNT	SIDE DISCHARGE	GRAVITY DAMPER	MOTORIZED DAMPER	WALL MOUNT
1								
2		YES					YES	
3	DISH HOOD EXHAUST		YES					

CURB ASSEMBLIES

NO.	ON FAN	WEIGHT	ITEM	SIZE
1	# 1	34 LBS	Curb	26.500"W x 26.500"L x 24.000"H Vented Hinged
2	# 2	74 LBS	Curb	21.000"W x 71.000"L x 24.000"H Insulated
3	# 3	34 LBS	Curb	19.500"W x 19.500"L x 24.000"H Hinged

FAN SOUND INFORMATION

FAN UNIT NO.	MOTOR	RPM	LWA	SONES	DBA	DISTANCE FT	OCTAVE 1	OCTAVE 2	OCTAVE 3	OCTAVE 4	OCTAVE 5	OCTAVE 6	OCTAVE 7	OCTAVE 8
1	Exhaust	1277	74.4	12	62.9	5	74.1	73.4	79.2	71	65.8	62.6	58.3	56.4
2	Supply	1083	81.1	18.7	69.6	5	83.5	81.8	80.7	77.1	74.3	74.7	69.6	66.6
3	Exhaust	1342	70.8	9.4	59.3	5	69.8	74.2	74	66.9	63.4	62	56	45

CUSTOMER APPROVAL TO MANUFACTURE:

Approved as Noted

Approved with NO Exception Taken

Revise and Resubmit

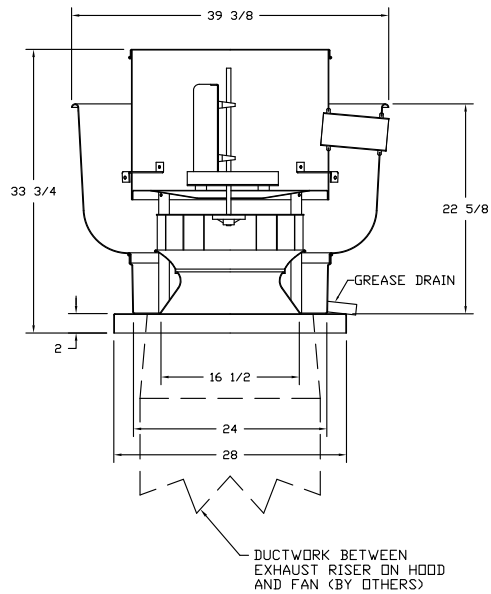
SIGNATURE _____

Your Title _____ Date _____



JOB Francis Inn	
LOCATION WESTBROOK, ME,	
DATE 4/13/2017	JOB # 2743111
DWG # 5	DRAWN BY BFC-21
REV.	SCALE 3/8" = 1'-0"

FAN #1 NCA16HPFA - EXHAUST FAN



FEATURES:

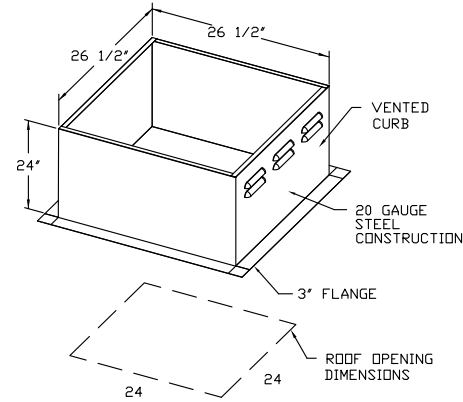
- ROOF MOUNTED FANS
- RESTAURANT MODEL
- UL705 AND UL762
- AMCA SOUND AND AIR CERTIFIED
- WIRING FROM MOTOR TO DISCONNECT SWITCH
- WEATHERPROOF DISCONNECT
- HIGH HEAT OPERATION 300°F (149°C)
- GREASE CLASSIFICATION TESTING

NORMAL TEMPERATURE TEST
EXHAUST FAN MUST OPERATE CONTINUOUSLY WHILE EXHAUSTING AIR AT 300°F (149°C) UNTIL ALL FAN PARTS HAVE REACHED THERMAL EQUILIBRIUM, AND WITHOUT ANY DETERIORATING EFFECTS TO THE FAN WHICH WOULD CAUSE UNSAFE OPERATION.

ABNORMAL FLARE-UP TEST
EXHAUST FAN MUST OPERATE CONTINUOUSLY WHILE EXHAUSTING BURNING GREASE VAPORS AT 600°F (316°C) FOR A PERIOD OF 15 MINUTES WITHOUT THE FAN BECOMING DAMAGED TO ANY EXTENT THAT COULD CAUSE AN UNSAFE CONDITION.

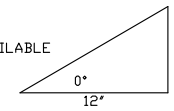
OPTIONS

- GREASE BOX
- FULL CRATING FOR EXHAUST FANS
- 3 YEAR EXTENDED MOTOR WARRANTY
- EXTRA SET OF BELTS
- FAN BASE CERAMIC SEAL - SHIP LOOSE - FOR GREASE DUCTS



PITCHED CURBS ARE AVAILABLE FOR PITCHED ROOFS.

SPECIFY PITCH:
EXAMPLE: 7/12 PITCH = 30° SLOPE



CUSTOMER APPROVAL TO MANUFACTURE:

Approved as Noted

Approved with NO Exception Taken

Revise and Resubmit

SIGNATURE _____

Your Title _____ Date _____

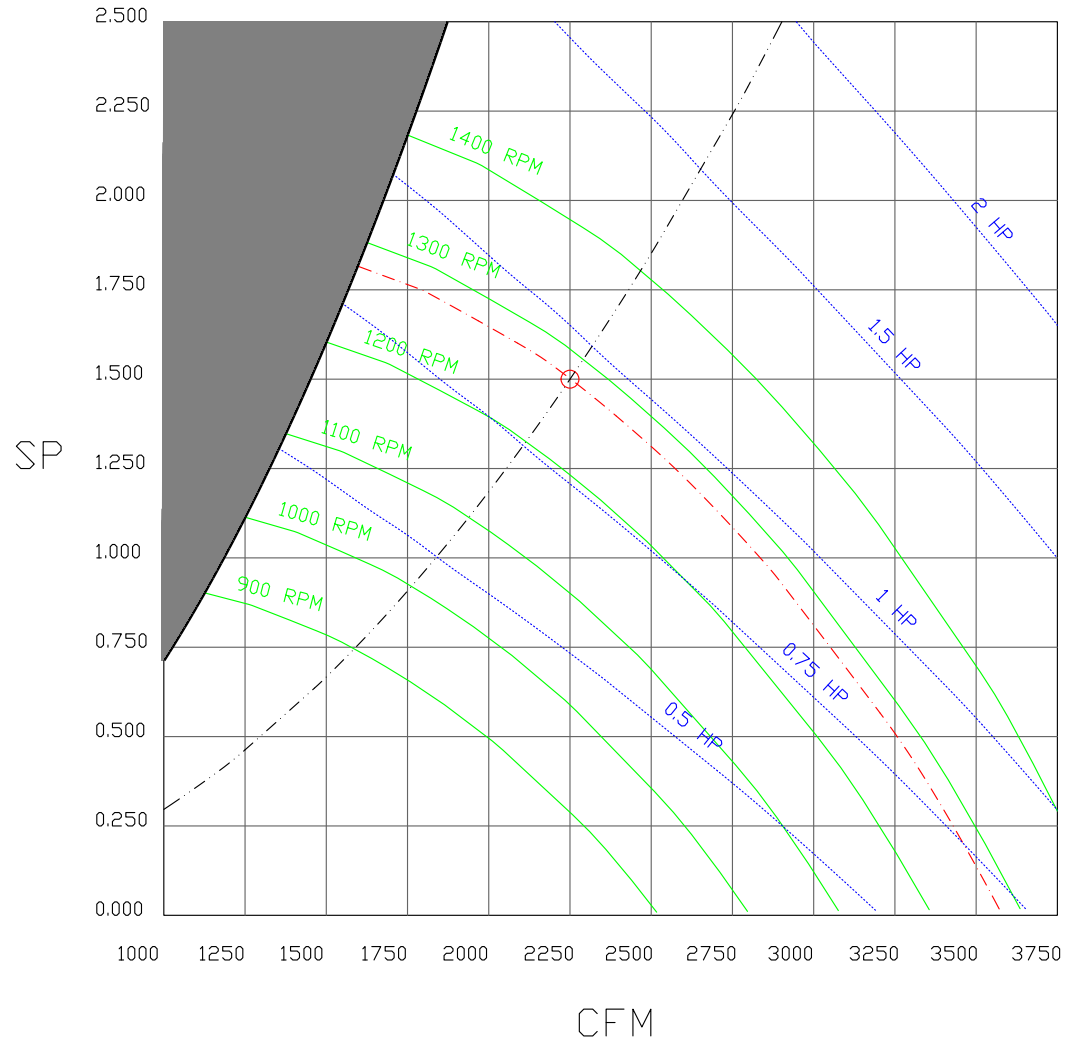


JOB Francis Inn	
LOCATION WESTBROOK, ME,	
DATE 4/13/2017	JOB # 2743111
DWG # 6	DRAWN BY BFC-21
REV.	SCALE 3/8" = 1'-0"

FAN#1 - EXHAUST PERFORMANCE CURVES.

2250 CFM, 1.5 SP @ 1277 RPM and 1 BHP at 59 feet and 70 deg F

* Please note that these curves were adjusted for job specific temperature and altitude.



CUSTOMER APPROVAL TO MANUFACTURE:

- Approved as Noted
- Approved with NO Exception Taken
- Revise and Resubmit

SIGNATURE _____
Your Title _____ Date _____



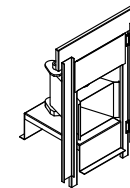
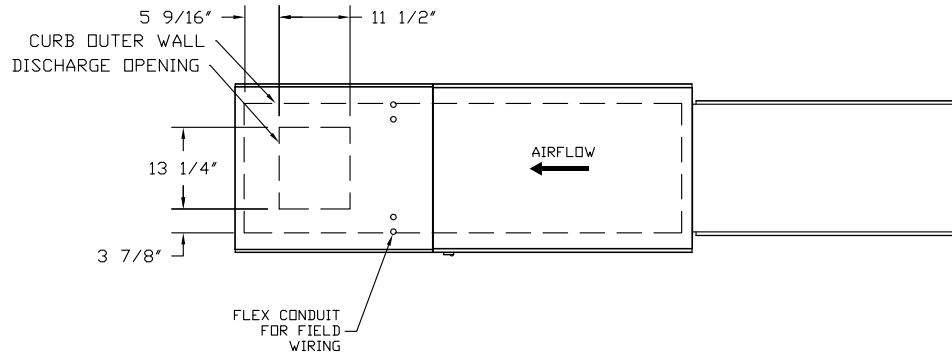
JOB Francis Inn	
LOCATION WESTBROOK, ME,	
DATE 4/13/2017	JOB # 2743111
DWG # 7	DRAWN BY BFC-21
REV.	SCALE 3/8" = 1'-0"

FAN #2 A1-D.250-G10 - HEATER

1. DIRECT GAS FIRED HEATED MAKE UP AIR UNIT WITH 10' BLOWER
2. INTAKE HOOD WITH EZ FILTERS
3. DOWN DISCHARGE - AIR FLOW RIGHT -> LEFT
4. COOLING INTERLOCK RELAY. 24VAC COIL. 120V CONTACTS. LOCKS OUT BURNER CIRCUIT WHEN AC IS ENERGIZED.
5. MOTORIZED BACK DRAFT DAMPER 16" X 18" FOR SIZE 1 STANDARD & MODULAR DIRECT FIRED HEATERS W/EXTENDED SHAFT, STANDARD GALVANIZED CONSTRUCTION, 3/4" REAR FLANGE, LF120S ACTUATOR INCLUDED
6. FULL CRATING FOR COMMERCIAL HEATERS FOR SHIPPING.
7. LOW FIRE START. ALLOWS THE BURNER CIRCUIT TO ENERGIZE WHEN THE MODULATION CONTROL IS IN A LOW FIRE POSITION.
8. GAS PRESSURE GAUGE, 0-35", 2.5" DIAMETER, 1/4" THREAD SIZE
9. GAS PRESSURE GAUGE, -5 TO +15 INCHES WC., 2.5" DIAMETER, 1/4" THREAD SIZE
10. EXTRA SET OF V-BELTS. ONLY TO BE ORDERED AS FAN OPTION AT TIME FAN IS ORDERED.
11. 3 YEAR EXTENDED WARRANTY FOR FAN MOTOR. PARTS ONLY; DOES NOT INCLUDE LABOR.

SUPPLY SIDE HEATER INFORMATION:

WINTER TEMPERATURE = 0°F. TEMP. RISE = 85°F.
 BTUs CALCULATED OFF STANDARD AIR DENSITY
 OUTPUT BTUs AT ALTITUDE OF 0.0 ft. = 185895
 INPUT BTUs AT ALTITUDE OF 0.0 ft. = 202060



Direct Fired (DF) Profile Plate Assembly

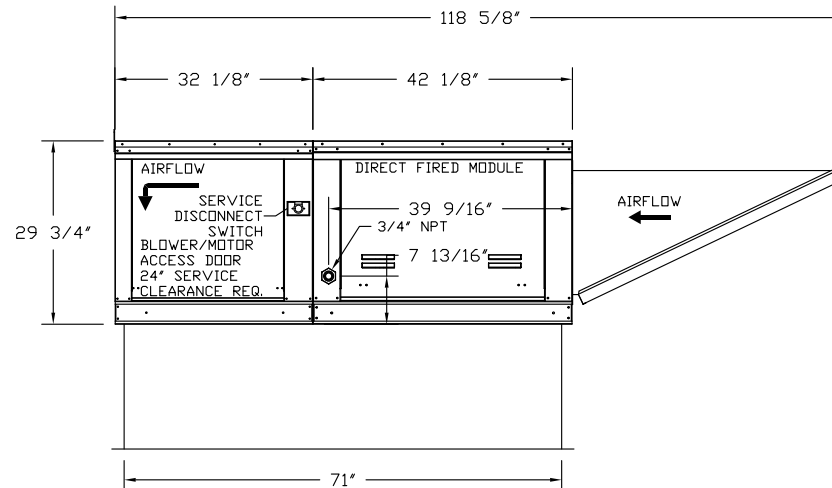
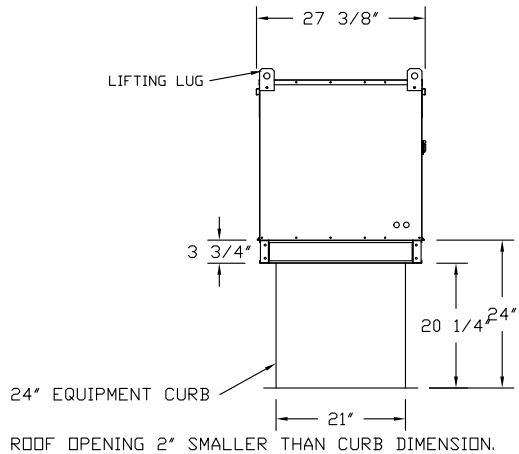
Direct Fired Profile Plate Specifications:

Description:
 Direct Fired burners shall have patented US Patent No. US6629023B2, self-adjusting profile plates designed to ensure proper air velocity and pressure drop across the burner. Profile plates shall allow burners to achieve clean combustion by limiting by-product levels to a maximum of 5ppm of carbon monoxide (CO), and 0.5ppm of nitrogen dioxide (NO2).

Application:
 Spring-loaded burner profile plates are engineered to automatically react to the momentum of a fresh air stream, without the need for any motors or actuators to mechanically adjust them. With this feature, all DF units are designed for demand control ventilation (DCV) requirements.

Certifications:
 All profile plate assemblies shall be included in the DF unit's ETL listing and comply with combined safety standards ANSI Z83.4 and CSA 3.7 (non-recirculating DF heaters) and ANSI Z83.18 (recirculating DF heaters).

General Construction:
 -Profile plates shall be formed from G90 galvanized steel.
 -Profile plates shall vary in size per unit.
 -Profile plates shall be mounted along the same plane as the discharge of the burner.
 -Design shall incorporate properly torqued, permanently mounted spring hinges.
 -Spring hinges shall be made from plated steel.



CUSTOMER APPROVAL TO MANUFACTURE:

Approved as Noted

Approved with NO Exception Taken

Revise and Resubmit

SIGNATURE _____

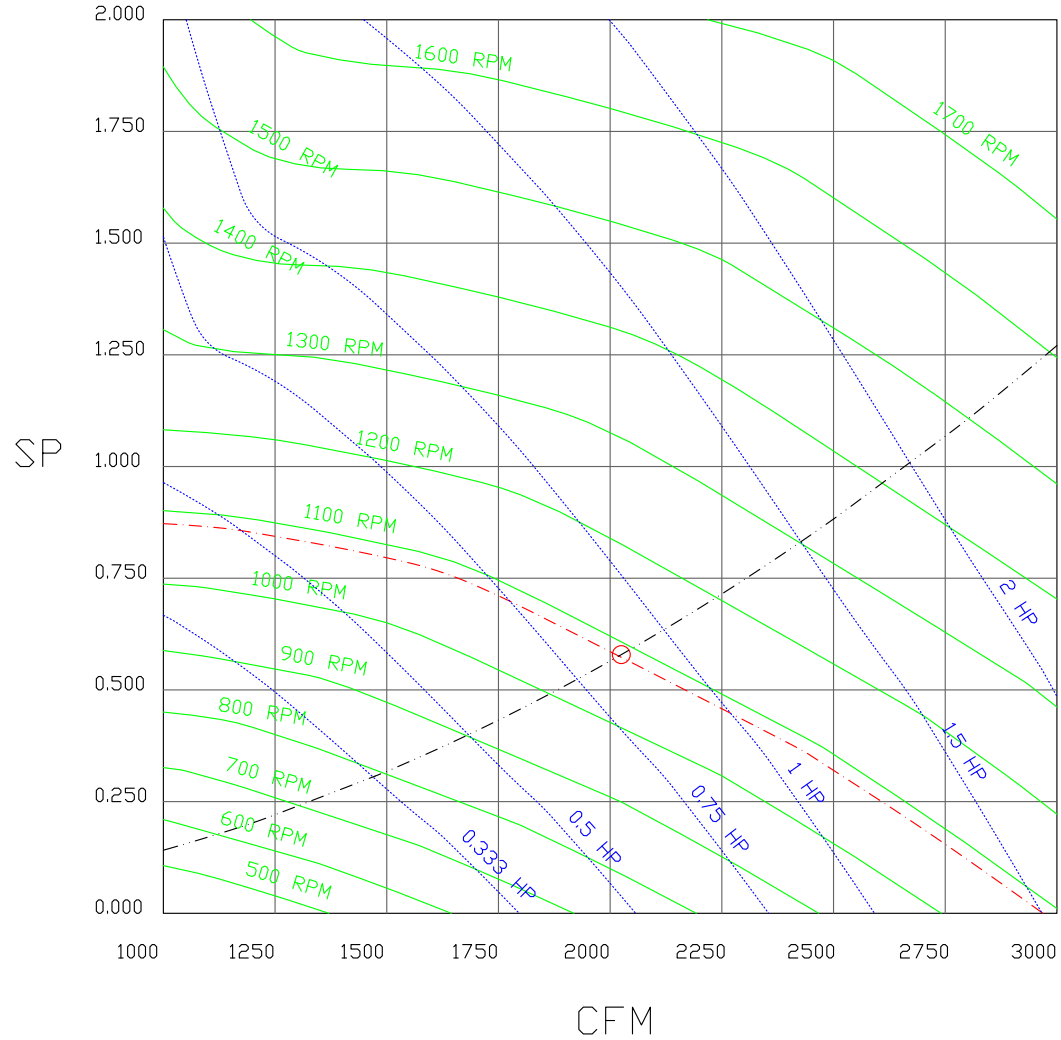
Your Title _____ Date _____



JOB Francis Inn	
LOCATION WESTBROOK, ME,	
DATE 4/13/2017	JOB # 2743111
DWG # 8	DRAWN BY BFC-21
REV.	SCALE 3/8" = 1'-0"

FAN#2 - HEATER PERFORMANCE CURVES.

2025 CFM, 0.579 SP @ 1083 RPM and 0.858 BHP at 0 feet and 85 deg F
 * Please note that these curves were adjusted for job specific temperature and altitude.



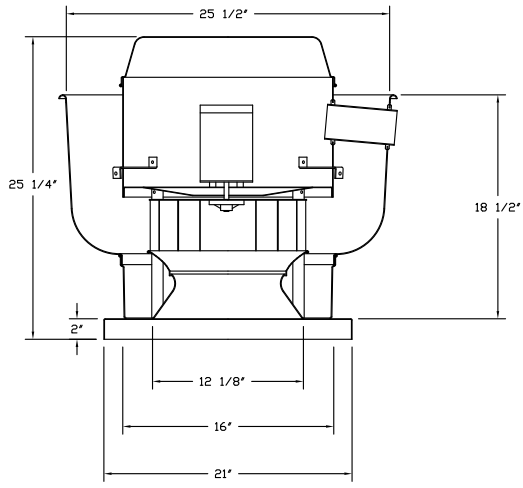
CUSTOMER APPROVAL TO MANUFACTURE:

Approved as Noted
 Approved with NO Exception Taken
 Revise and Resubmit
 SIGNATURE _____
 Your Title _____ Date _____



JOB Francis Inn	
LOCATION WESTBROOK, ME,	
DATE 4/13/2017	JOB # 2743111
DWG # 9	DRAWN BY BFC-21
REV.	SCALE 3/8" = 1'-0"

FAN #3 DU33HFA - EXHAUST FAN (DISH HOOD EXHAUST)

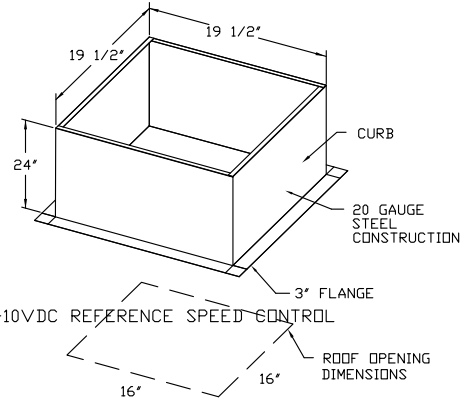


FEATURES:

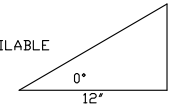
- DIRECT DRIVE CONSTRUCTION (NO BELTS/PULLEYS)
- ROOF MOUNTED FANS
- UL705
- VARIABLE SPEED CONTROL
- INTERNAL WIRING
- WEATHERPROOF DISCONNECT
- THERMAL OVERLOAD PROTECTION (SINGLE PHASE)

OPTIONS

- FULL CRATING FOR EXHAUST FANS
- 3 YEAR EXTENDED MOTOR WARRANTY
- SCR-11 BIRD SCREEN
- I 15-BDD DAMPER
- ECM WIRING PACKAGE-EXHAUST - MANUAL OR 0-10VDC REFERENCE SPEED CONTROL (NIDEC MOTOR)

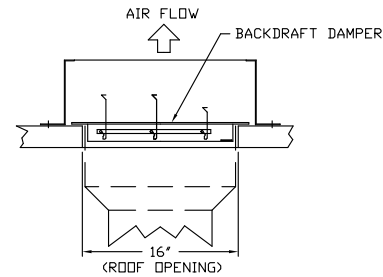


PITCHED CURBS ARE AVAILABLE FOR PITCHED ROOFS.



SPECIFY PITCH:
EXAMPLE: 7/12 PITCH = 30° SLOPE

BACKDRAFT DAMPER INSTALLATION



CUSTOMER APPROVAL TO MANUFACTURE:

- Approved as Noted
- Approved with NO Exception Taken
- Revise and Resubmit

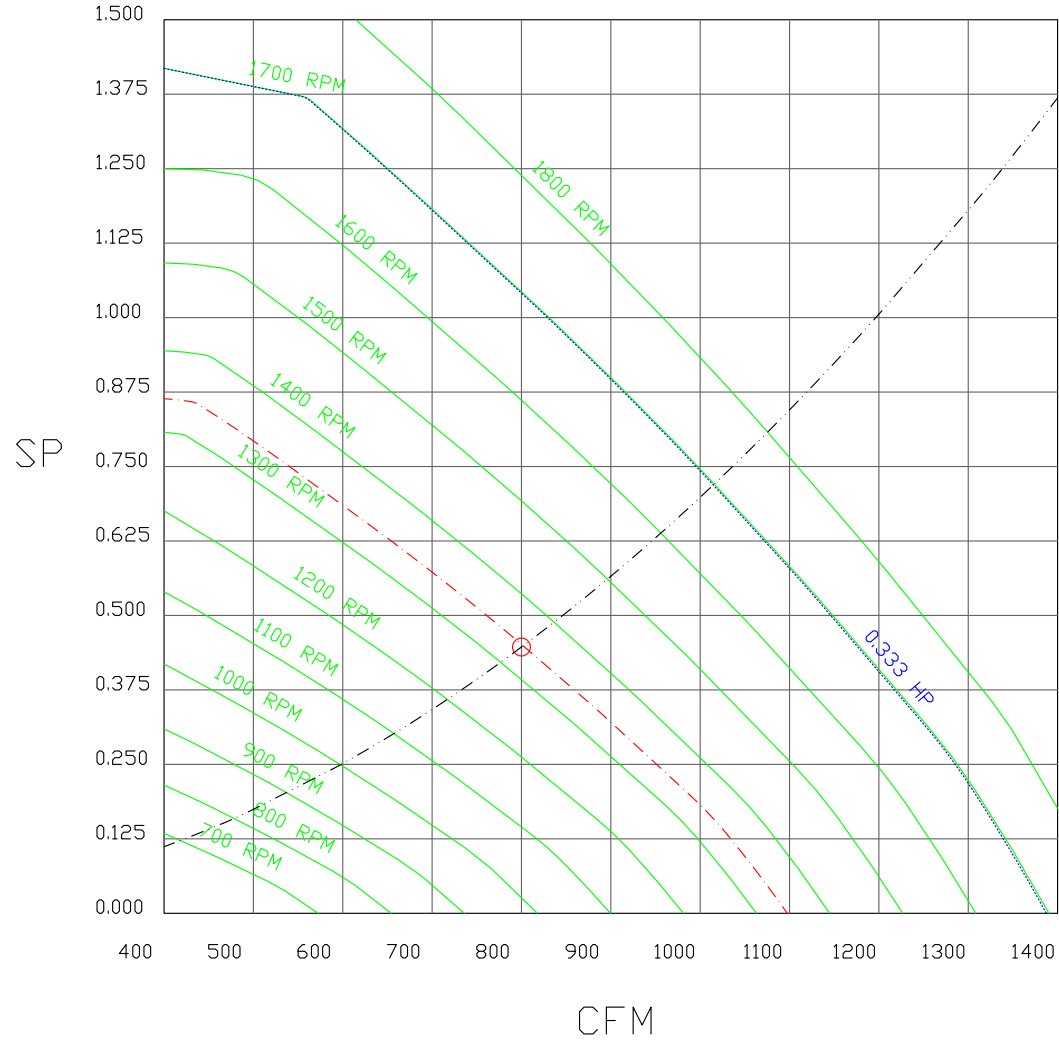
SIGNATURE _____
Your Title _____ Date _____



JOB Francis Inn	
LOCATION WESTBROOK, ME,	
DATE 4/13/2017	JOB # 2743111
DWG # 10	DRAWN BY BFC-21
REV.	SCALE 3/8" = 1'-0"

FAN#3 (DISH HOOD EXHAUST) - EXHAUST PERFORMANCE CURVES.

800 CFM, 0.447 SP @ 1342 RPM and 0.164 BHP at 59 feet and 70 deg F
 * Please note that these curves were adjusted for job specific temperature and altitude.



CUSTOMER APPROVAL TO MANUFACTURE:

Approved as Noted
 Approved with NO Exception Taken
 Revise and Resubmit
 SIGNATURE _____
 Your Title _____ Date _____



JOB Francis Inn	
LOCATION WESTBROOK, ME,	
DATE 4/13/2017	JOB # 2743111
DWG # 11	DRAWN BY BFC-21
REV.	SCALE 3/8" = 1'-0"

Exhaust Fan Wiring

JOB 2743111 - Francis Inn

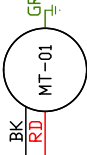
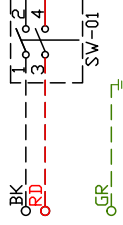
DRAWING NUMBER EXH2743111-1

SHIP DATE 4/13/2017

MODEL NCA16HPFA

Installed Options

1



Component Identification Location

Label Description Location

MT-01 Fan Motor [20]

SW-01 Main disconnect switch [20]

4

5

6

7

8

9

10

11

12

13

14

15

16

17

18

19

20

21

22

23

EXHAUST MOTOR_INFO 1.5HP-230V-1P-6.8FLA

ELECTRICAL INFORMATION
MOTOR/CTRL MOP: 85A
MOTOR/CTRL MOP: 15A

NOTES
--- DENOTES FIELD WIRING
___ DENOTES INTERNAL WIRING

WIRE COLOR

BK - BLACK YW - YELLOW
BL - BLUE GR - GREEN
BR - BROWN GY - GRAY
OR - ORANGE PR - PURPLE
RD - RED PK - PINK
WH - WHITE

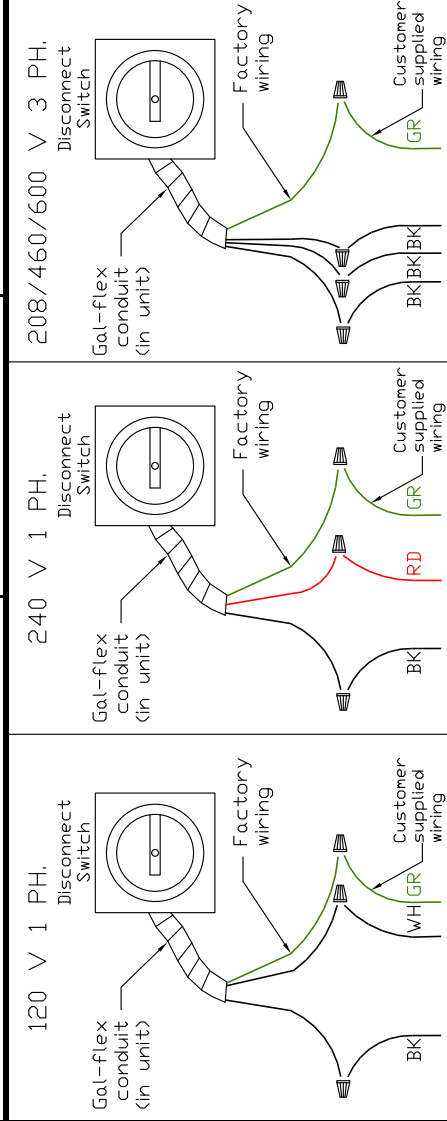
Installation Wiring

JOB 2743111 - Francis Inn

DRAWING NUMBER RP2743111-2

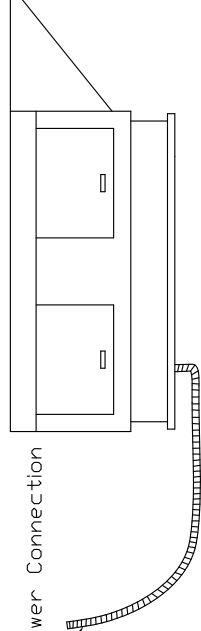
SHIP DATE 4/13/2017

MODEL A1-D.250-G10



Installed Options

See above details, Power Connection



NOTES

- WIRE COLOR
- BK - BLACK
 - BL - BLUE
 - BR - BROWN
 - OR - ORANGE
 - RD - RED
 - WH - WHITE
 - YW - YELLOW
 - GR - GREEN
 - GY - GRAY
 - PR - PURPLE
 - PK - PINK

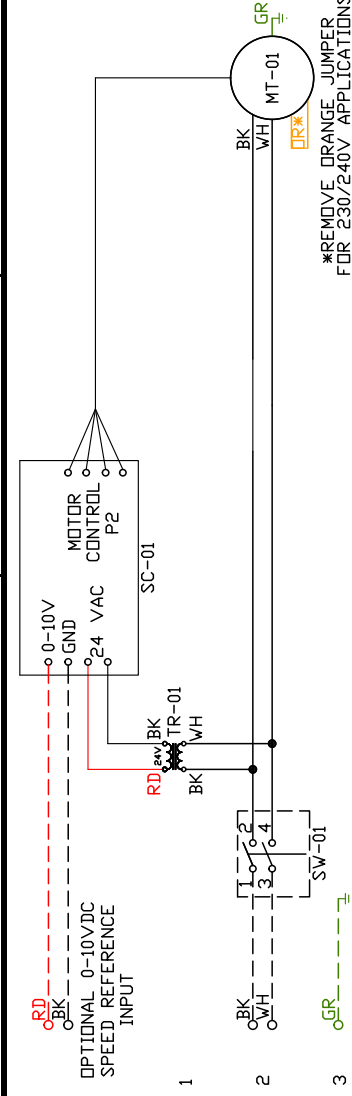
Exhaust Fan Wiring

JOB 2743111 - Francis Inn

DRAWING NUMBER EXH2743111-3

SHIP DATE 4/13/2017

MODEL DU33HFA



*REMOVE ORANGE JUMPER FOR 230/240V APPLICATIONS

Installed Options

Label	Component Description	Location
MT-01	Fan Motor	[20]
SC-01	RTC-FSC-1	[10]
SW-01	Main disconnect switch	[20]
TR-01	24VAC 20VA Transformer	[10]

EXHAUST MOTOR INFO
0.333HP-115V-1P-4-FLA

ELECTRICAL INFORMATION
MOTOR/CTRL MOP: 55A
MOTOR/CTRL MOP: 15A

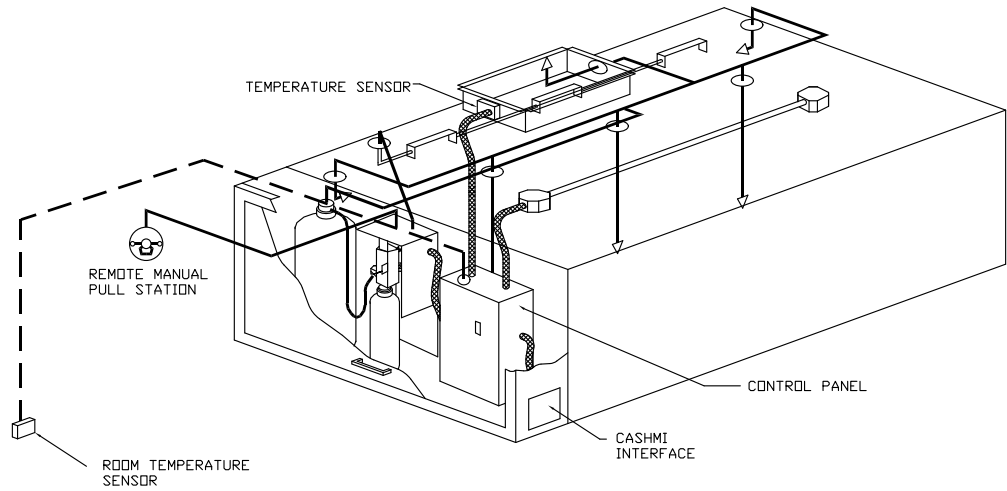
NOTES
--- DENOTES FIELD WIRING
___ DENOTES INTERNAL WIRING

WIRE COLOR

BK	-	BLACK	YW	-	YELLOW
BL	-	BLUE	GR	-	GREEN
BR	-	BROWN	GY	-	GRAY
OR	-	ORANGE	PR	-	PURPLE
RD	-	RED	PK	-	PINK
WH	-	WHITE			

ELECTRICAL PACKAGES - Job#2743111

NO.	TAG	PACKAGE #	LOCATION	SWITCHES		OPTION	FANS CONTROLLED				
				LOCATION	QUANTITY		TYPE	?	H.P.	VOLT	FLA
1		SC-211110FP	Utility Cabinet Left	03 - Utility Cabinet Left	1 Light	Smart Controls Thermostatic Control	Exhaust	1	1.500	230	6.8
				Hood # 1	1 Fan		Supply	1	1.500	230	6.8



TYPICAL CONTROL CENTER INSTALLATION

CUSTOMER APPROVAL TO MANUFACTURE:

Approved as Noted

Approved with NO Exception Taken

Revise and Resubmit

SIGNATURE _____

Your Title _____ Date _____







JOB Francis Inn	
LOCATION WESTBROOK, ME,	
DATE 4/13/2017	JOB # 2743111
DWG # 16	DRAWN BY BFC-21
REV.	SCALE 3/8" = 1'-0"

JOB NO
2743111

MODEL NUMBER
SC-21110FP

DRAWN BY
INSTALL

DESCRIPTION OF OPERATION:
220V 1 Phase w/ control for 1 Exhaust Fan, 1 Supply Fan, Exhaust on in Fire, Lights out in Fire, Fan(s) On/Off
Thermostatically Controlled. Room temperature sensor shipped loose for field installation.

JOB NAME
Francis Inn

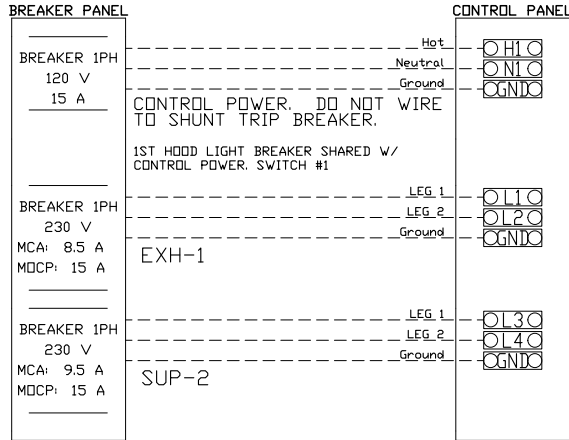
DATE
4/13/2017

DWG NO
ECP #1-1

BREAKER PANEL TO CONTROL PANEL

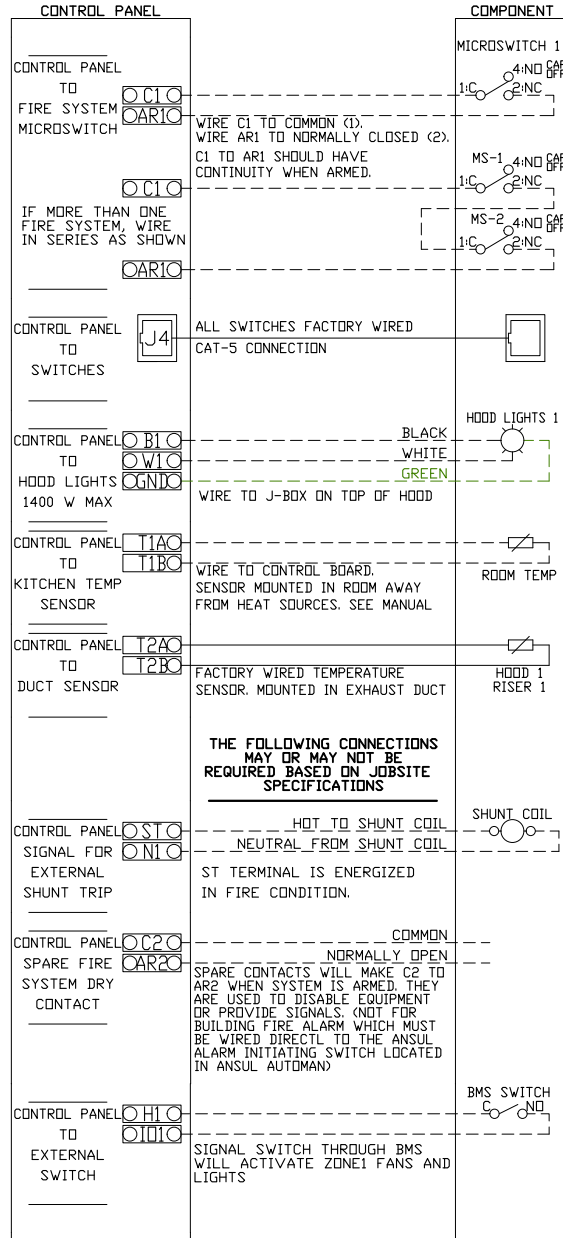
Responsibility: Electrician

BREAKER SIZE SHOWN IS THE MAXIMUM ALLOWED



CONTROL PANEL TO ACCESSORY ITEMS

Responsibility: Electrician



CONTROL PANEL TO FANS

Responsibility: Electrician

