



## Submittal Data Sheet

1.0-Ton Wall Mounted Unit - FTX12NMVJURXL12QMVJU

Project: ST FRANCIS

Submitted by: David Chadwick of F W WEBB CO on 3/29/2017

Submitted to: No Engineer Name Specified

### FEATURES

- Titanium apatite photocatalytic air purification filter (option)
- Hot start technology
- Auto-restart (after power failure)

### BENEFITS

- Quiet operation
- Low ambient cooling operation down to -4° F with field setting and wind baffle (KPW937A4)
- Operating Range - Cooling (50° - 114.8°)
- Operating Range - Heating (-13° - 60°)
- 12 Year limited parts warranty with online registration
- 5 Year limited parts warranty for commercial applications

### INDOOR UNIT

### OUTDOOR UNIT





## Submittal Data Sheet

1.0-Ton Wall Mounted Unit - FTX12NMVJURXL12QMVJU

Project: ST FRANCIS

Submitted by: David Chadwick of F W WEBB CO on 3/29/2017

Submitted to: No Engineer Name Specified

### SYSTEM PERFORMANCE

|                                    |                |                                  |   |
|------------------------------------|----------------|----------------------------------|---|
| Indoor Unit Model No.              | FTX12NMVJU     | Indoor Unit Name:                | 19 SEER HP DUCTLESS ID 1 TON                              |
| Outdoor Unit Model No.             | RXL12QMVJU     | Outdoor Unit Name:               | 18 SEER HP DUCTLESS OD 1 TON                              |
| Rated Cooling Capacity (Btu/hr):   | 10,900         | Rated Cooling Conditions:        | Indoor (°F DB/WB): 80 / 67<br>Ambient (°F DB/WB): 95 / 75 |
| Sensible Capacity (Btu/hr):        | 9,100          | Rated Piping Length(ft):         | 25  |
| Max/Min Cooling Capacity (Btu/hr): | 13,300 / 4,400 | Rated Height Difference (ft):    | 49.00   |
| Cooling Input Power (kW):          | 3.200          | Rated Heating Conditions:        | Indoor (°F DB/WB): 70 / 60<br>Ambient (°F DB/WB): 47 / 43 |
| SEER (Non-Ducted/Ducted):          | 20.00 /        | HSPF (Non-Ducted/Ducted):        | 12.0 /  |
| EER (Non-Ducted/Ducted):           | 12.50 /        | Heating COP (Non-Ducted/Ducted): | 3.9 /   |
| Rated Heating Capacity (Btu/hr):   | 13,600         |                                  |   |
| Max/Min Heating Capacity (Btu/hr): | 18,800 / 4,400 |                                  |   |
| Heating Input Power (kW):          | 4.00           |                                  |   |

### SYSTEM DETAILS

|  |        |                                   |          |
|--|--------|-----------------------------------|----------|
| Refrigerant Type:                      | R-410A | Cooling Operation Range (°F DB):  | 50 - 115 |
| Holding Refrigerant Charge (lbs):      | 2.1    | Heating Operation Range (°F WB):  | -13 - 75 |
| Additional Charge (lb/ft):             | 0.21   | Max. Pipe Length (Vertical) (ft): | 49       |
| Pre-charge Piping (Length) (ft):       |        | Cooling Range w/Baffle (°F DB):   | - 115    |
| Max. Pipe Length (Total) (ft):         | 66     | Heating Range w/Baffle (°F WB):   | - 75     |
| Max Height Separation (Ind to Ind ft): | 49     |                                   |          |



# Submittal Data Sheet

1.0-Ton Wall Mounted Unit - FTX12NMVJURXL12QM/JU

Project: ST FRANCIS

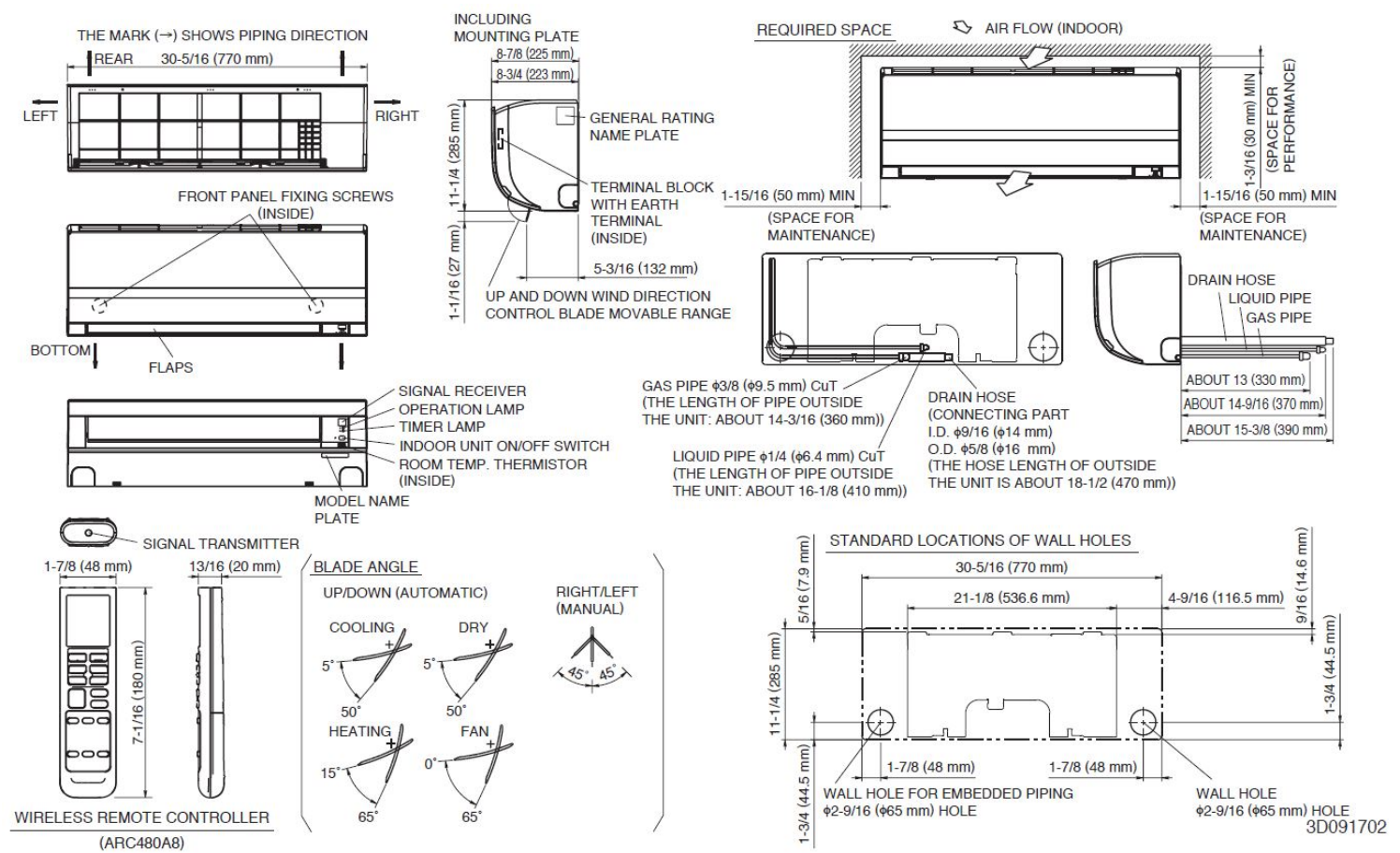
Submitted by: David Chadwick of F W WEBB CO on 3/29/2017

Submitted to: No Engineer Name Specified

**INDOOR UNIT DETAILS**

|                                       |                                       |  |                 |
|---------------------------------------|---------------------------------------|--|-----------------|
| Power Supply (V/Hz/Ph):               | 208-230 / 60 / 1                      | Airflow Rate (H/M/L/SL) (CFM):           | 434/311/247/145 |
| Power Supply Connections:             | See Outdoor Unit for Electrical Specs | Moisture Removal (Gal/hr):               |                 |
| Min. Circuit Amps MCA (A):            |                                       | Gas Pipe Connection (inch):              | 3/8             |
| Max Overcurrent Protection (MOP) (A): |                                       | Liquid Pipe Connection (inch):           | 1/4             |
| Dimensions (HxWxD) (in):              | 11-1/4 x 30-5/16 x 8-3/4              | Condensate Connection (inch):            | 5/8             |
| Panel (HxWxD) (in):                   |                                       | Sound Pressure (H/M/L/SL) (dBA):         | 45/37/30/19     |
| Net Weight (lb):                      | 18                                    | Sound Power Level (dBA):                 |                 |
| Panel Weight (lb):                    |                                       | Ext. Static Pressure (Rated/Max) (inWg): | /               |

## DIMENSIONAL DRAWING - INDOOR UNIT



Daikin North America LLC, 5151 San Felipe, Suite 500, Houston, TX, 77056

Daikin City Generated Submittal Data

[www.daikinac.com](http://www.daikinac.com) [www.daikincomfort.com](http://www.daikincomfort.com)

(Daikin's products are subject to continuous improvements. Daikin reserves the right to modify product design, specifications and information in this data sheet without notice and without incurring any obligations)

Submittal Date: 3/29/2017 7:32:55 PM

Page 3 of 4



# Submittal Data Sheet

1.0-Ton Wall Mounted Unit - FTX12NMVJURXL12QMVJU

Project: ST FRANCIS

Submitted by: David Chadwick of F W WEBB CO on 3/29/2017

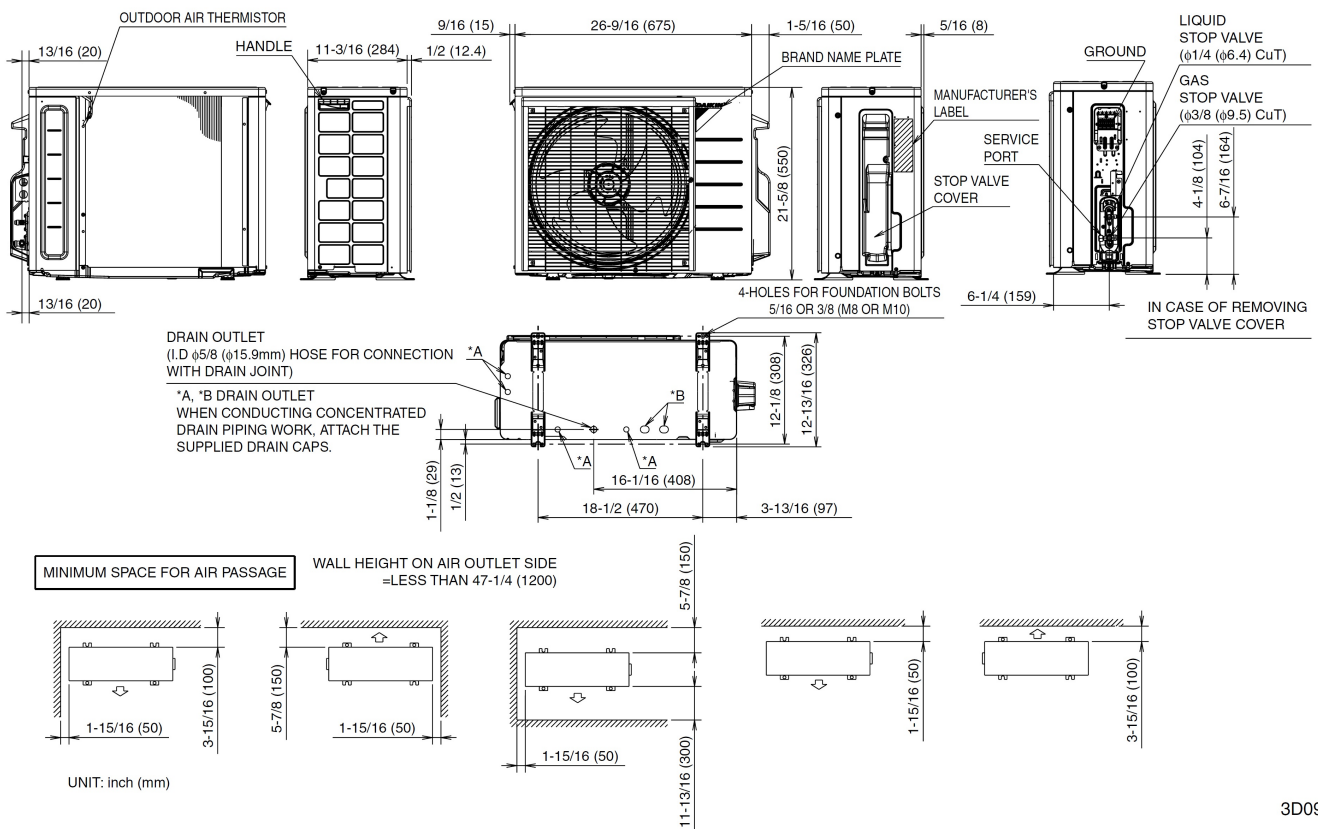
Submitted to: No Engineer Name Specified

**OUTDOOR UNIT DETAILS**

|                                       |                            |                                |           |
|---------------------------------------|----------------------------|--------------------------------|-----------|
| Power Supply (V/Hz/Ph):               | 208-230 / 60 / 1           | Compressor Type:               | Inverter  |
| Power Supply Connections:             | L1, L2, Ground             | Capacity Control Range (%):    | -         |
| Min. Circuit Amps MCA (A):            | 13.00                      | Airflow Rate (H/SL) (CFM):     | 1,144/865 |
| Max Overcurrent Protection (MOP) (A): | 15.00                      | Gas Pipe Connection (inch):    | 3/8       |
| Max Starting Current MSC(A):          |                            | Liquid Pipe Connection (inch): | 1/4       |
| Rated Load Amps RLA(A):               | 12.0                       | Sound Pressure (H) (dBA):      | 50        |
| Dimensions (HxWxD) (in):              | 21-5/8 x 26-9/16 x 11-3/16 | Sound Power Level (dBA):       |           |
| Net Weight (lb):                      | 70                         |                                |           |

## DIMENSIONAL DRAWING - OUTDOOR UNIT

**RXL09/12QMVJU**



3D092206A

Daikin North America LLC, 5151 San Felipe, Suite 500, Houston, TX, 77056

Daikin City Generated Submittal Data

[www.daikinac.com](http://www.daikinac.com) [www.daikincomfort.com](http://www.daikincomfort.com)

(Daikin's products are subject to continuous improvements. Daikin reserves the right to modify product design, specifications and information in this data sheet without notice and without incurring any obligations)

Submittal Date: 3/29/2017 7:32:55 PM

Page 4 of 4



## Submittal Data Sheet

FTXS12LVJU - FTXS12LVJU

Project: ST FRANCIS

Submitted by: David Chadwick of F W WEBB CO on 3/29/2017

Submitted to: No Engineer Name Specified

## FEATURES

- IR controller included
- 3-D airflow - Auto-swing (up, down and right, left)
- Intelligent eye occupancy sensor
- Titanium apatite photocatalytic air purifying
- Hot start technology
- Auto-restart (after power failure)

## BENEFITS

- 12 year limited parts and compressor warranty with online registration
- 5 Year limited parts warranty for commercial applications





## Submittal Data Sheet

FTXS12LVJU - FTXS12LVJU

Project: ST FRANCIS

Submitted by: David Chadwick of F W WEBB CO on 3/29/2017

Submitted to: No Engineer Name Specified

### PERFORMANCE

|                                  |              |                               |   |
|----------------------------------|--------------|-------------------------------|---|
| Indoor Unit Model No.            | FTXS12LVJU   | Indoor Unit Name:             | FTXS12LVJU  |
| Type:                            | Wall Mounted | Rated Cooling Conditions:     | Indoor (°F DB/WB): 80 / 67<br>Ambient (°F DB/WB): 95 / 75 |
| Rated Cooling Capacity (Btu/hr): | 12,000       | Rated Heating Conditions:     | Indoor (°F DB/WB): 70 / 70<br>Ambient (°F DB/WB): 47 / 43 |
| Sensible Capacity (Btu/hr):      | 9,250        | Rated Piping Length(ft):      |   |
| Cooling Input Power (kW):        | 0.030        | Rated Height Separation (ft): |   |
| Rated Heating Capacity (Btu/hr): | 12,000       |                               |   |
| Heating Input Power (kW):        | 0.03         |                               |   |

### INDOOR UNIT DETAILS

|                                       |                                       |  |                 |
|---------------------------------------|---------------------------------------|--|-----------------|
| Power Supply (V/Hz/Ph):               | 208-230 / 60 / 1                      | Airflow Rate (H/M/L/SL) (CFM):           | 403/307/205/155 |
| Power Supply Connections:             | See Outdoor Unit for Electrical Specs | Moisture Removal (Gal/hr):               | 4.0             |
| Min. Circuit Amps MCA (A):            |                                       | Gas Pipe Connection (inch):              | 3/8             |
| Max Overcurrent Protection (MOP) (A): |                                       | Liquid Pipe Connection (inch):           | 1/4             |
| Dimensions (HxWxD) (in):              | 11-5/8 x 31-1/2 x 8-7/16              | Condensate Connection (inch):            | 5/8             |
| Panel (HxWxD) (in):                   |                                       | Sound Pressure (H/M/L/SL) (dBA):         | 45/37/29/23     |
| Net Weight (lb):                      | 22                                    | Sound Power Level (dBA):                 | 57              |
| Panel Weight (lb):                    |                                       | Ext. Static Pressure (Rated/Max) (inWg): | 0.00 / 0.00     |

### Submittal Data Sheet

FTXS12LVJU - FTXS12LVJU

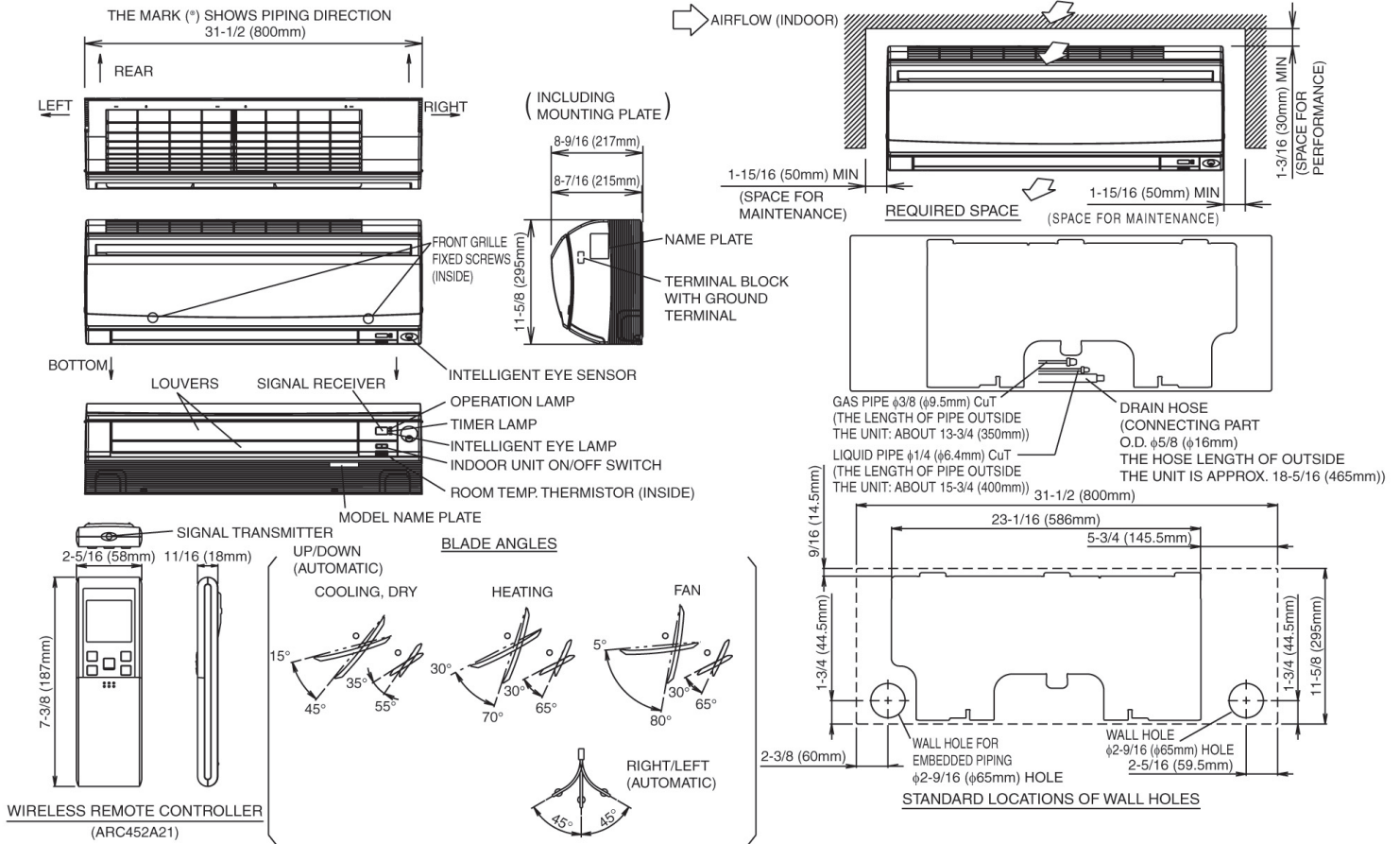
Project: ST FRANCIS

Submitted by: David Chadwick of F W WEBB CO on 3/29/2017

Submitted to: No Engineer Name Specified

## DIMENSIONAL DRAWING

### FTXS09,12LVJU





## Submittal Data Sheet

FTXS09LVJU - FTXS09LVJU

Project: ST FRANCIS

Submitted by: David Chadwick of F W WEBB CO on 3/29/2017

Submitted to: No Engineer Name Specified

## FEATURES

- IR controller included
- 3-D airflow - Auto-swing (up, down and right, left)
- Intelligent eye occupancy sensor
- Titanium apatite photocatalytic air purifying
- Hot start technology
- Auto-restart (after power failure)

## BENEFITS

- 12 year limited parts and compressor warranty with online registration
- 5 Year limited parts warranty for commercial applications







## Submittal Data Sheet

FTXS09LVJU - FTXS09LVJU

Project: ST FRANCIS

Submitted by: David Chadwick of F W WEBB CO on 3/29/2017

Submitted to: No Engineer Name Specified

### PERFORMANCE

|                                  |              |                               |   |
|----------------------------------|--------------|-------------------------------|---|
| Indoor Unit Model No.            | FTXS09LVJU   | Indoor Unit Name:             | FTXS09LVJU  |
| Type:                            | Wall Mounted | Rated Cooling Conditions:     | Indoor (°F DB/WB): 80 / 67<br>Ambient (°F DB/WB): 95 / 75 |
| Rated Cooling Capacity (Btu/hr): | 9,000        | Rated Heating Conditions:     | Indoor (°F DB/WB): 70 / 70<br>Ambient (°F DB/WB): 47 / 43 |
| Sensible Capacity (Btu/hr):      | 8,100        | Rated Piping Length(ft):      |   |
| Cooling Input Power (kW):        | 0.020        | Rated Height Separation (ft): |   |
| Rated Heating Capacity (Btu/hr): | 9,000        |                               |   |
| Heating Input Power (kW):        | 0.02         |                               |   |

### INDOOR UNIT DETAILS

|                                       |                                       |  |                 |
|---------------------------------------|---------------------------------------|--|-----------------|
| Power Supply (V/Hz/Ph):               | 208-230 / 60 / 1                      | Airflow Rate (H/M/L/SL) (CFM):           | 381/279/194/145 |
| Power Supply Connections:             | See Outdoor Unit for Electrical Specs | Moisture Removal (Gal/hr):               | 0.3             |
| Min. Circuit Amps MCA (A):            |                                       | Gas Pipe Connection (inch):              | 3/8             |
| Max Overcurrent Protection (MOP) (A): |                                       | Liquid Pipe Connection (inch):           | 1/4             |
| Dimensions (HxWxD) (in):              | 11-5/8 x 31-1/2 x 8-7/16              | Condensate Connection (inch):            | 5/8             |
| Panel (HxWxD) (in):                   |                                       | Sound Pressure (H/M/L/SL) (dBA):         | 41/33/25/22     |
| Net Weight (lb):                      | 20                                    | Sound Power Level (dBA):                 | 57              |
| Panel Weight (lb):                    |                                       | Ext. Static Pressure (Rated/Max) (inWg): | 0.00 / 0.00     |

### Submittal Data Sheet

FTXS09LVJU - FTXS09LVJU

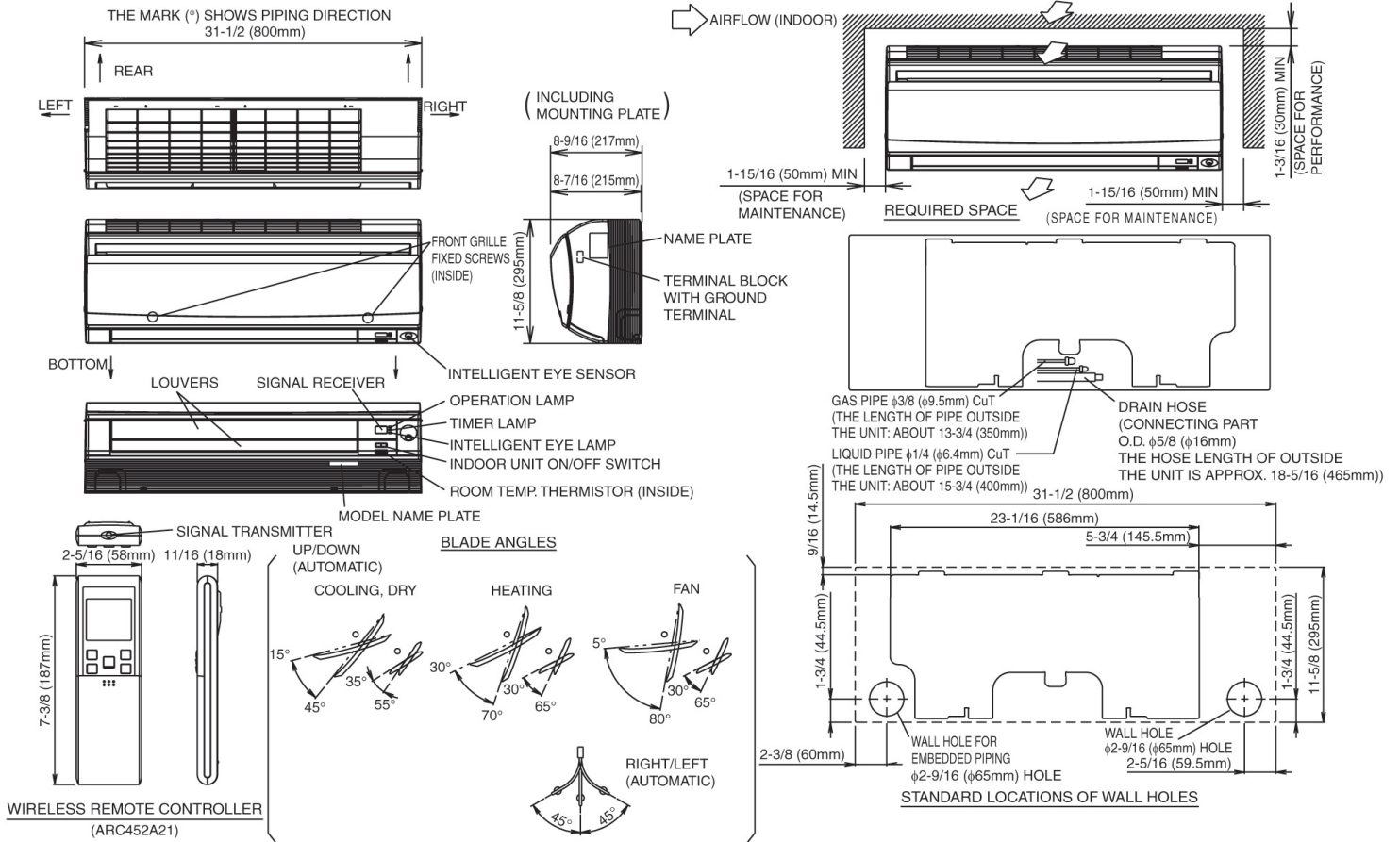
Project: ST FRANCIS

Submitted by: David Chadwick of F W WEBB CO on 3/29/2017

Submitted to: No Engineer Name Specified

## DIMENSIONAL DRAWING

### FTXS09,12LVJU





## Submittal Data Sheet

0.75-Ton Wall Mounted Unit - FTX09NMVJURXL09QMVJU

Project: ST FRANCIS

Submitted by: David Chadwick of F W WEBB CO on 3/29/2017

Submitted to: No Engineer Name Specified

### FEATURES

- IR controller included
- Titanium apatite photocatalytic air purification filter (option)
- Hot start technology
- Auto-restart (after power failure)

### INDOOR UNIT



### BENEFITS

- Quiet operation
- Low ambient cooling operation down to -4° F with field setting and wind baffle (KPW937A4)
- Operating Range - Cooling (50° - 114.8°)
- Operating Range - Heating (-13° - 60°)
- 12 Year limited parts warranty with online registration
- 5 Year limited parts warranty for commercial applications

### OUTDOOR UNIT





## Submittal Data Sheet

0.75-Ton Wall Mounted Unit - FTX09NMVJURXL09QMVJU

Project: ST FRANCIS

Submitted by: David Chadwick of F W WEBB CO on 3/29/2017

Submitted to: No Engineer Name Specified

### SYSTEM PERFORMANCE

|                                    |                |                                  |   |
|------------------------------------|----------------|----------------------------------|---|
| Indoor Unit Model No.              | FTX09NMVJU     | Indoor Unit Name:                | 19 SEER HP DUCTLESS ID 3/4 TON                            |
| Outdoor Unit Model No.             | RXL09QMVJU     | Outdoor Unit Name:               | 18 SEER HP DUCTLESS OD 3/4 TON                            |
| Rated Cooling Capacity (Btu/hr):   | 9,000          | Rated Cooling Conditions:        | Indoor (°F DB/WB): 80 / 67<br>Ambient (°F DB/WB): 95 / 75 |
| Sensible Capacity (Btu/hr):        | 8,170          | Rated Piping Length(ft):         | 25  |
| Max/Min Cooling Capacity (Btu/hr): | 10,900 / 4,400 | Rated Height Difference (ft):    | 49.00   |
| Cooling Input Power (kW):          | 2.640          | Rated Heating Conditions:        | Indoor (°F DB/WB): 70 / 70<br>Ambient (°F DB/WB): 47 / 43 |
| SEER (Non-Ducted/Ducted):          | 20.00 /        | HSPF (Non-Ducted/Ducted):        | 12.5 /  |
| EER (Non-Ducted/Ducted):           | 12.50 /        | Heating COP (Non-Ducted/Ducted): | 4.2 /   |
| Rated Heating Capacity (Btu/hr):   | 10,900         |                                  |   |
| Max/Min Heating Capacity (Btu/hr): | 16,000 / 4,400 |                                  |   |
| Heating Input Power (kW):          | 3.20           |                                  |   |

### SYSTEM DETAILS

|  |        |                                   |          |
|--|--------|-----------------------------------|----------|
| Refrigerant Type:                      | R-410A | Cooling Operation Range (°F DB):  | 50 - 115 |
| Holding Refrigerant Charge (lbs):      | 2.1    | Heating Operation Range (°F WB):  | -13 - 75 |
| Additional Charge (lb/ft):             | 0.21   | Max. Pipe Length (Vertical) (ft): | 49       |
| Pre-charge Piping (Length) (ft):       |        | Cooling Range w/Baffle (°F DB):   | - 115    |
| Max. Pipe Length (Total) (ft):         | 66     | Heating Range w/Baffle (°F WB):   | - 75     |
| Max Height Separation (Ind to Ind ft): | 49     |                                   |          |

## Submittal Data Sheet

0.75-Ton Wall Mounted Unit - FTX09NMVJURXL09QMVJU

Project: ST FRANCIS

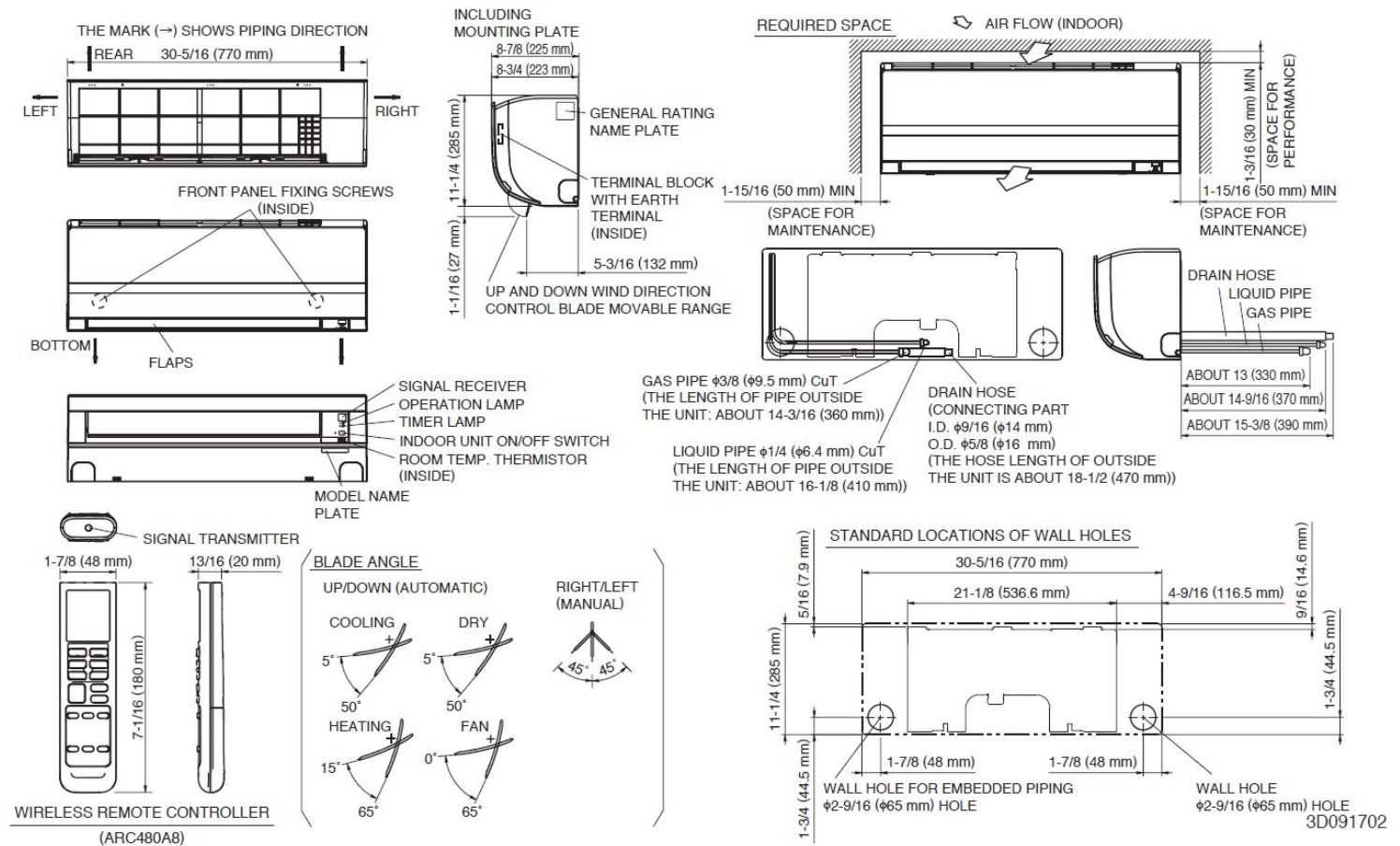
Submitted by: David Chadwick of F W WEBB CO on 3/29/2017

Submitted to: No Engineer Name Specified

### INDOOR UNIT DETAILS

|                                       |                                       |  |                 |
|---------------------------------------|---------------------------------------|--|-----------------|
| Power Supply (V/Hz/Ph):               | 208-230 / 60 / 1                      | Airflow Rate (H/M/L/SL) (CFM):           | 417/297/244/141 |
| Power Supply Connections:             | See Outdoor Unit for Electrical Specs | Moisture Removal (Gal/hr):               | 0.3             |
| Min. Circuit Amps MCA (A):            |                                       | Gas Pipe Connection (inch):              | 3/8             |
| Max Overcurrent Protection (MOP) (A): |                                       | Liquid Pipe Connection (inch):           | 1/4             |
| Dimensions (HxWxD) (in):              | 11-1/4 x 30-5/16 x 8-3/4              | Condensate Connection (inch):            | 5/8             |
| Panel (HxWxD) (in):                   |                                       | Sound Pressure (H/M/L/SL) (dBA):         | 43/36/30/19     |
| Net Weight (lb):                      | 18                                    | Sound Power Level (dBA):                 |                 |
| Panel Weight (lb):                    |                                       | Ext. Static Pressure (Rated/Max) (inWg): | /               |

## DIMENSIONAL DRAWING - INDOOR UNIT



Daikin North America LLC, 5151 San Felipe, Suite 500, Houston, TX, 77056

Daikin City Generated Submittal Data

[www.daikinac.com](http://www.daikinac.com) [www.daikincomfort.com](http://www.daikincomfort.com)

(Daikin's products are subject to continuous improvements. Daikin reserves the right to modify product design, specifications and information in this data sheet without notice and without incurring any obligations)

Submittal Date: 3/29/2017 7:33:00 PM

Page 3 of 4



## Submittal Data Sheet

0.75-Ton Wall Mounted Unit - FTX09NMVJURXL09QMVJU

Project: ST FRANCIS

Submitted by: David Chadwick of F W WEBB CO on 3/29/2017

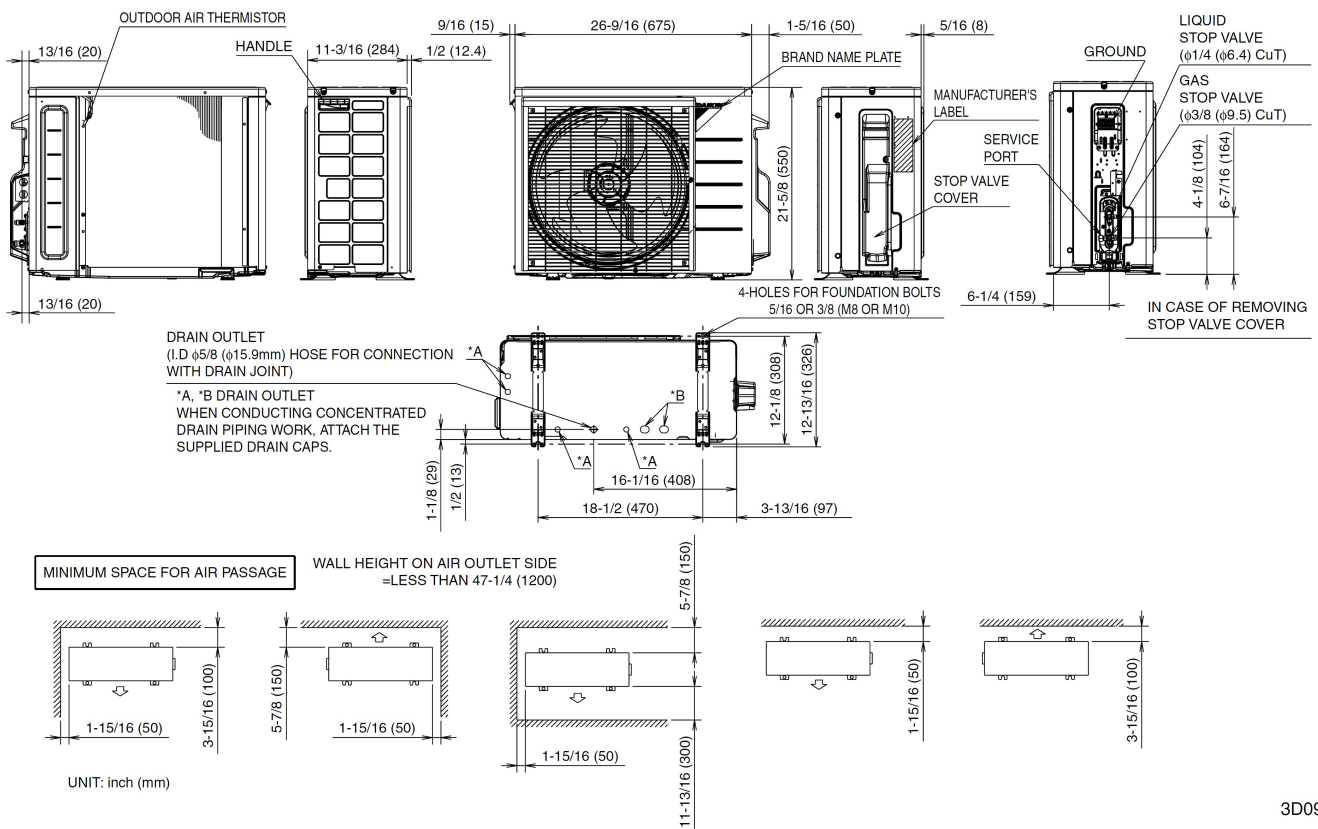
Submitted to: No Engineer Name Specified

### OUTDOOR UNIT DETAILS

|                                       |                            |                                |           |
|---------------------------------------|----------------------------|--------------------------------|-----------|
| Power Supply (V/Hz/Ph):               | 208-230 / 60 / 1           | Compressor Type:               | Inverter  |
| Power Supply Connections:             | L1, L2, Ground             | Capacity Control Range (%):    | -         |
| Min. Circuit Amps MCA (A):            | 9.50                       | Airflow Rate (H/SL) (CFM):     | 1,105/865 |
| Max Overcurrent Protection (MOP) (A): | 15.00                      | Gas Pipe Connection (inch):    | 3/8       |
| Max Starting Current MSC(A):          |                            | Liquid Pipe Connection (inch): | 1/4       |
| Rated Load Amps RLA(A):               | 8.5                        | Sound Pressure (H) (dBA):      | 49        |
| Dimensions (HxWxD) (in):              | 21-5/8 x 26-9/16 x 11-3/16 | Sound Power Level (dBA):       |           |
| Net Weight (lb):                      | 60                         |                                |           |

## DIMENSIONAL DRAWING - OUTDOOR UNIT

### RXL09/12QMVJU



3D092206A

Daikin North America LLC, 5151 San Felipe, Suite 500, Houston, TX, 77056

Daikin City Generated Submittal Data

[www.daikinac.com](http://www.daikinac.com) [www.daikincomfort.com](http://www.daikincomfort.com)

(Daikin's products are subject to continuous improvements. Daikin reserves the right to modify product design, specifications and information in this data sheet without notice and without incurring any obligations)

Submittal Date: 3/29/2017 7:33:00 PM

Page 4 of 4



## Submittal Data Sheet

1.25-Ton Wall Mounted Unit - FTX15NMVJURXL15QMVJU

Project: ST FRANCIS

Submitted by: David Chadwick of F W WEBB CO on 3/29/2017

Submitted to: No Engineer Name Specified

### FEATURES

- Titanium apatite photocatalytic air purification filter (option)
- Hot start technology
- Auto-restart (after power failure)

### BENEFITS

- Quiet operation
- Low ambient cooling operation down to -4° F with field setting and wind baffle (KPW063A4)
- Operating Range - Cooling (50° - 114.8°)
- Operating Range - Heating (-13° - 60°)
- 12 Year limited parts warranty with online registration
- 5 Year limited parts warranty for commercial applications

### INDOOR UNIT

### OUTDOOR UNIT





## Submittal Data Sheet

1.25-Ton Wall Mounted Unit - FTX15NMVJURXL15QMVJU

Project: ST FRANCIS

Submitted by: David Chadwick of F W WEBB CO on 3/29/2017

Submitted to: No Engineer Name Specified

### SYSTEM PERFORMANCE

|                                    |                |                                  |   |
|------------------------------------|----------------|----------------------------------|---|
| Indoor Unit Model No.              | FTX15NMVJU     | Indoor Unit Name:                | 18 SEER HP DUCTLESS ID 1.25TON                            |
| Outdoor Unit Model No.             | RXL15QMVJU     | Outdoor Unit Name:               | 18 SEER HP DUCTLESS OD 1.25TON                            |
| Rated Cooling Capacity (Btu/hr):   | 15,000         | Rated Cooling Conditions:        | Indoor (°F DB/WB): 80 / 67<br>Ambient (°F DB/WB): 95 / 75 |
| Sensible Capacity (Btu/hr):        | 12,470         | Rated Piping Length(ft):         | 25  |
| Max/Min Cooling Capacity (Btu/hr): | 18,400 / 5,800 | Rated Height Difference (ft):    | 65.60   |
| Cooling Input Power (kW):          | 4.400          | Rated Heating Conditions:        | Indoor (°F DB/WB): 70 / 60<br>Ambient (°F DB/WB): 47 / 43 |
| SEER (Non-Ducted/Ducted):          | 20.00 /        | HSPF (Non-Ducted/Ducted):        | 12.5 /  |
| EER (Non-Ducted/Ducted):           | 13.00 /        | Heating COP (Non-Ducted/Ducted): | 4.0 /   |
| Rated Heating Capacity (Btu/hr):   | 18,300         |                                  |   |
| Max/Min Heating Capacity (Btu/hr): | 24,600 / 5,800 |                                  |   |
| Heating Input Power (kW):          | 5.35           |                                  |   |

### SYSTEM DETAILS

|  |        |                                   |          |
|--|--------|-----------------------------------|----------|
| Refrigerant Type:                      | R-410A | Cooling Operation Range (°F DB):  | 50 - 115 |
| Holding Refrigerant Charge (lbs):      | 3.2    | Heating Operation Range (°F WB):  | -13 - 75 |
| Additional Charge (lb/ft):             | 0.21   | Max. Pipe Length (Vertical) (ft): | 66       |
| Pre-charge Piping (Length) (ft):       |        | Cooling Range w/Baffle (°F DB):   | -        |
| Max. Pipe Length (Total) (ft):         | 98     | Heating Range w/Baffle (°F WB):   | -        |
| Max Height Separation (Ind to Ind ft): | 66     |                                   |          |





# Submittal Data Sheet

1.25-Ton Wall Mounted Unit - FTX15NMVJURXL15QMVJU

Project: ST FRANCIS

Submitted by: David Chadwick of F W WEBB CO on 3/29/2017

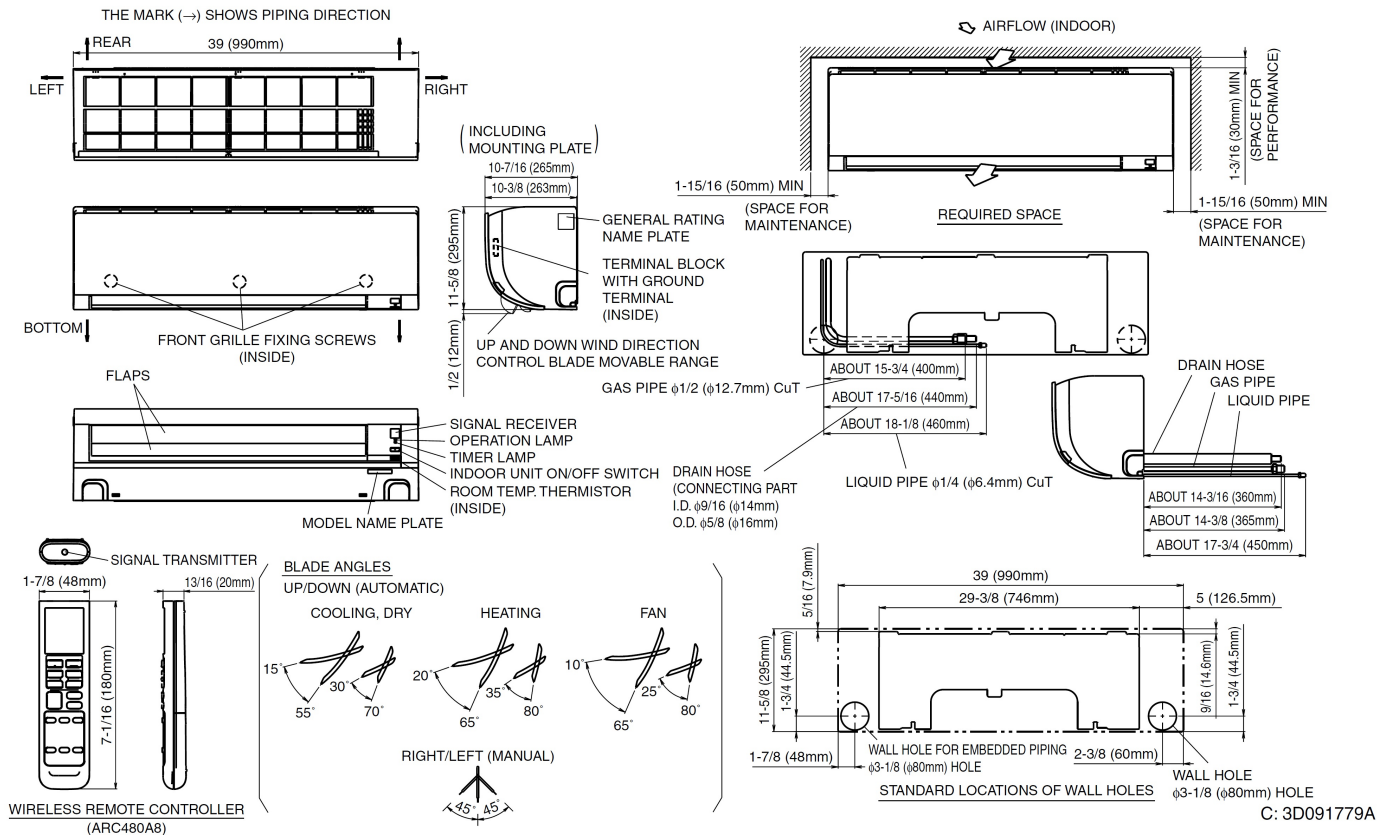
Submitted to: No Engineer Name Specified

## INDOOR UNIT DETAILS

|                                       |                      |  |                 |
|---------------------------------------|----------------------|--|-----------------|
| Power Supply (V/Hz/Ph):               | 208-230 / 60 / 1     | Airflow Rate (H/M/L/SL) (CFM):           | 593/505/431/367 |
| Power Supply Connections:             |                      | Moisture Removal (Gal/hr):               |                 |
| Min. Circuit Amps MCA (A):            |                      | Gas Pipe Connection (inch):              | 1/2             |
| Max Overcurrent Protection (MOP) (A): |                      | Liquid Pipe Connection (inch):           | 1/4             |
| Dimensions (HxWxD) (in):              | 11-5/8 x 39 x 10-3/8 | Condensate Connection (inch):            | 5/8             |
| Panel (HxWxD) (in):                   |                      | Sound Pressure (H/M/L) (dBA):            | 41/36/33        |
| Net Weight (lb):                      | 27                   | Sound Power Level (dBA):                 |                 |
| Panel Weight (lb):                    |                      | Ext. Static Pressure (Rated/Max) (inWg): | /               |

## DIMENSIONAL DRAWING - INDOOR UNIT

### FTX15NMVJU



Daikin North America LLC, 5151 San Felipe, Suite 500, Houston, TX, 77056

Daikin City Generated Submittal Data

[www.daikinac.com](http://www.daikinac.com) [www.daikincomfort.com](http://www.daikincomfort.com)

(Daikin's products are subject to continuous improvements. Daikin reserves the right to modify product design, specifications and information in this data sheet without notice and without incurring any obligations)

Submittal Date: 3/29/2017 7:33:02 PM

Page 3 of 4



# Submittal Data Sheet

1.25-Ton Wall Mounted Unit - FTX15NMVJURXL15QMVCJU

Project: ST FRANCIS

Submitted by: David Chadwick of F W WEBB CO on 3/29/2017

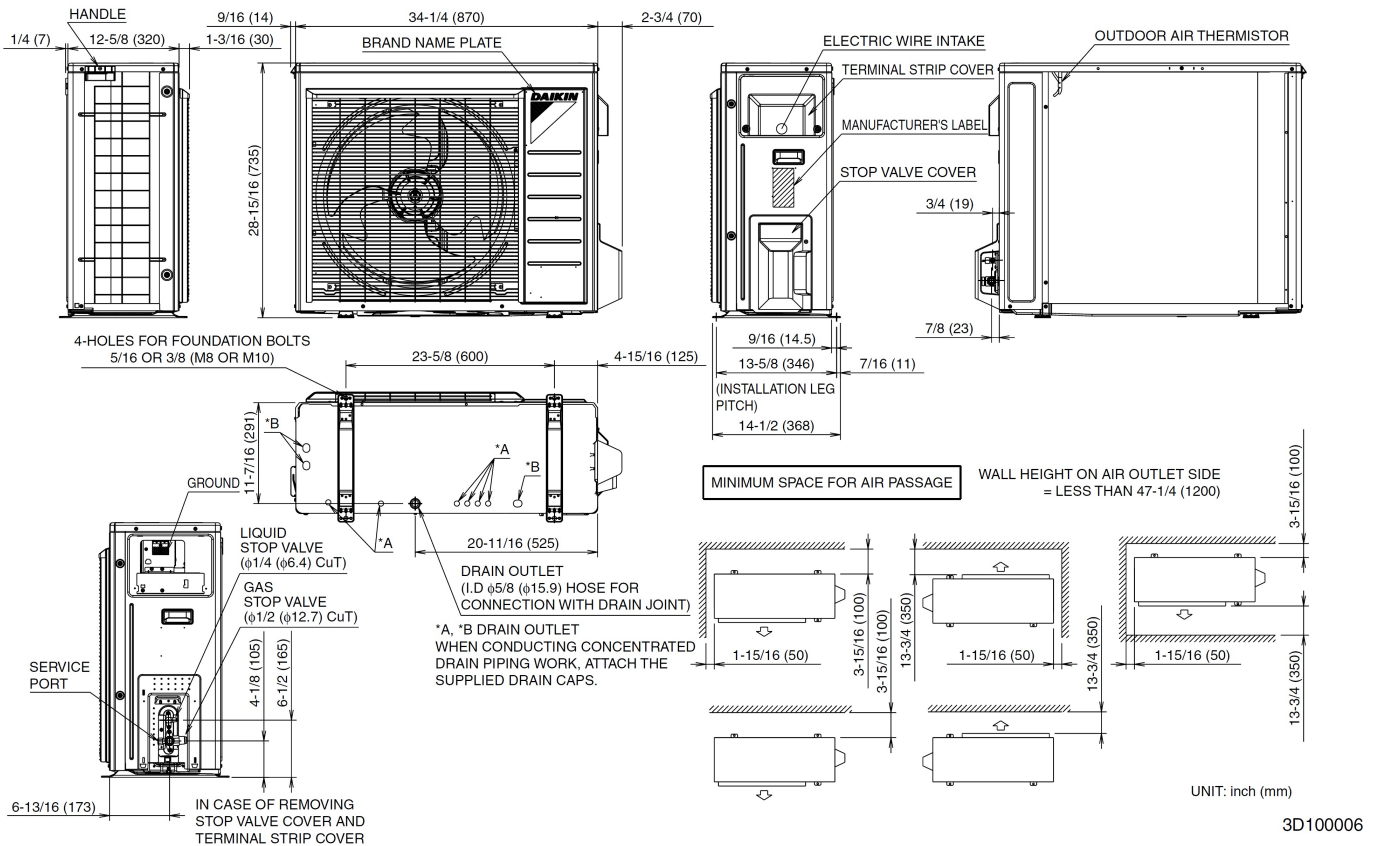
Submitted to: No Engineer Name Specified

**OUTDOOR UNIT DETAILS**

|                                       |                            |                                |             |
|---------------------------------------|----------------------------|--------------------------------|-------------|
| Power Supply (V/Hz/Ph):               | 208-230 / 60 / 1           | Compressor Type:               | Inverter    |
| Power Supply Connections:             | L1, L2, Ground             | Capacity Control Range (%):    | -           |
| Min. Circuit Amps MCA (A):            | 13.00                      | Airflow Rate (H/SL) (CFM):     | 2,044/1,762 |
| Max Overcurrent Protection (MOP) (A): | 15.00                      | Gas Pipe Connection (inch):    | 1/2         |
| Max Starting Current MSC(A):          |                            | Liquid Pipe Connection (inch): | 1/4         |
| Rated Load Amps RLA(A):               | 11.8                       | Sound Pressure (H) (dBA):      | 50          |
| Dimensions (HxWxD) (in):              | 28-15/16 x 34-1/4 x 12-5/8 | Sound Power Level (dBA):       |             |
| Net Weight (lb):                      | 108                        |                                |             |

## DIMENSIONAL DRAWING - OUTDOOR UNIT

**RXL15QMVCJU**



Daikin North America LLC, 5151 San Felipe, Suite 500, Houston, TX, 77056

Daikin City Generated Submittal Data

[www.daikinac.com](http://www.daikinac.com) [www.daikincomfort.com](http://www.daikincomfort.com)

(Daikin's products are subject to continuous improvements. Daikin reserves the right to modify product design, specifications and information in this data sheet without notice and without incurring any obligations)

Submittal Date: 3/29/2017 7:33:02 PM

Page 4 of 4



## Submittal Data Sheet

FTXS15LVJU - FTXS15LVJU

Project: ST FRANCIS

Submitted by: David Chadwick of F W WEBB CO on 3/29/2017

Submitted to: No Engineer Name Specified

## FEATURES

- IR controller included
- 3-D airflow - Auto-swing (up, down and right, left)
- Intelligent eye occupancy sensor
- Titanium apatite photocatalytic air purifying
- Hot start technology
- Auto-restart (after power failure)

## BENEFITS

- 12 year limited parts and compressor warranty with online registration
- 5 Year limited parts warranty for commercial applications





## Submittal Data Sheet

FTXS15LVJU - FTXS15LVJU

Project: ST FRANCIS

Submitted by: David Chadwick of F W WEBB CO on 3/29/2017

Submitted to: No Engineer Name Specified

### PERFORMANCE

|                                  |              |                               |   |
|----------------------------------|--------------|-------------------------------|---|
| Indoor Unit Model No.            | FTXS15LVJU   | Indoor Unit Name:             | FTXS15LVJU  |
| Type:                            | Wall Mounted | Rated Cooling Conditions:     | Indoor (°F DB/WB): 80 / 67<br>Ambient (°F DB/WB): 95 / 75 |
| Rated Cooling Capacity (Btu/hr): | 15,000       | Rated Heating Conditions:     | Indoor (°F DB/WB): 70 / 70<br>Ambient (°F DB/WB): 47 / 43 |
| Sensible Capacity (Btu/hr):      |              | Rated Piping Length(ft):      |   |
| Cooling Input Power (kW):        | 0.040        | Rated Height Separation (ft): |   |
| Rated Heating Capacity (Btu/hr): | 15,000       |                               |   |
| Heating Input Power (kW):        | 0.04         |                               |   |

### INDOOR UNIT DETAILS

|                                       |                                       |  |                 |
|---------------------------------------|---------------------------------------|--|-----------------|
| Power Supply (V/Hz/Ph):               | 208-230 / 60 / 1                      | Airflow Rate (H/M/L/SL) (CFM):           | 568/477/385/360 |
| Power Supply Connections:             | See Outdoor Unit for Electrical Specs | Moisture Removal (Gal/hr):               | 0.8             |
| Min. Circuit Amps MCA (A):            |                                       | Gas Pipe Connection (inch):              | 1/2             |
| Max Overcurrent Protection (MOP) (A): |                                       | Liquid Pipe Connection (inch):           | 1/4             |
| Dimensions (HxWxD) (in):              | 13-3/8 x 41-5/16 x 9-3/4              | Condensate Connection (inch):            | 5/8             |
| Panel (HxWxD) (in):                   |                                       | Sound Pressure (H/M/L/SL) (dBA):         | 45/40/35/32     |
| Net Weight (lb):                      | 31                                    | Sound Power Level (dBA):                 | 61              |
| Panel Weight (lb):                    |                                       | Ext. Static Pressure (Rated/Max) (inWg): | 0.00 / 0.00     |

# Submittal Data Sheet

FTXS15LVJU - FTXS15LVJU

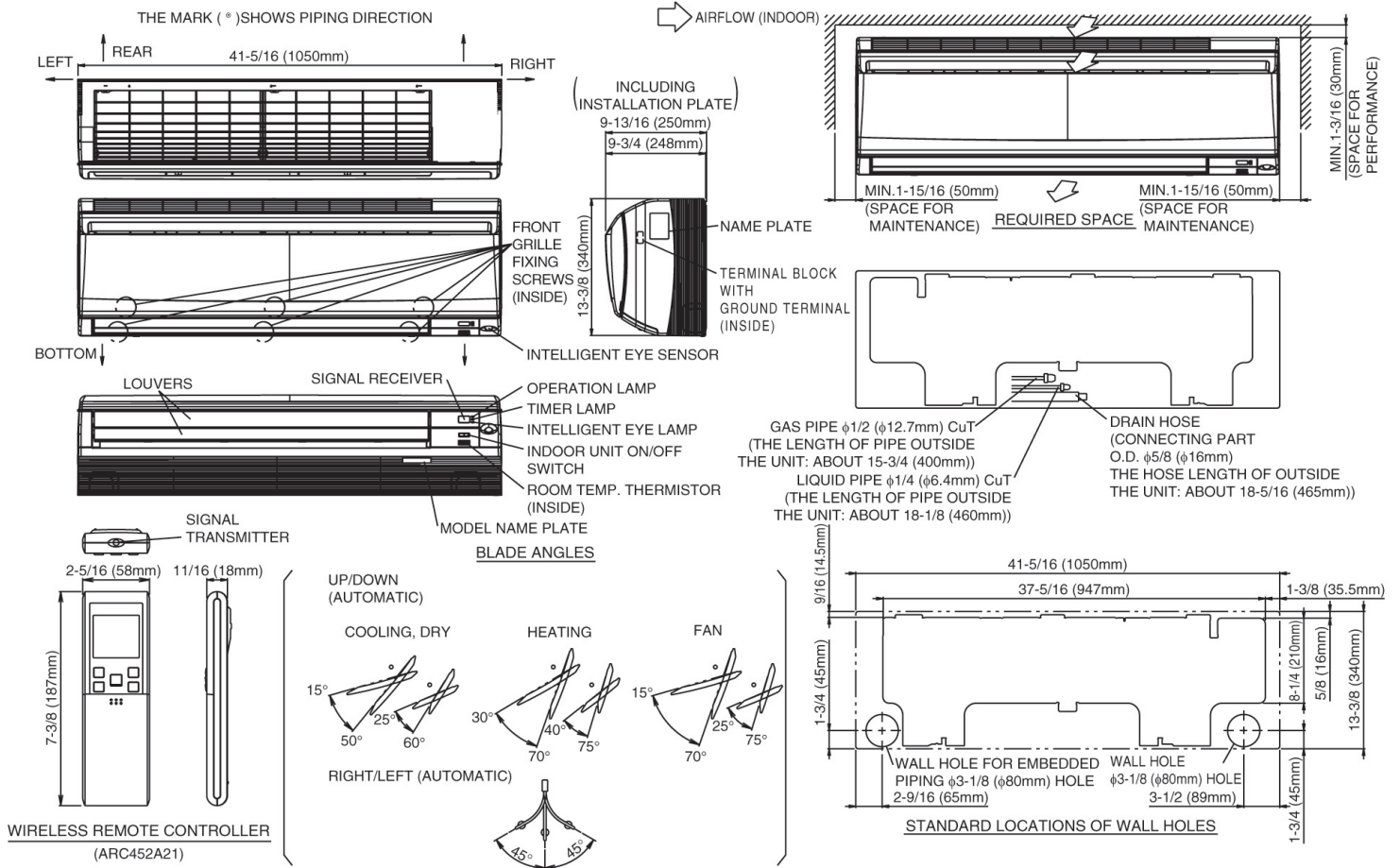
Project: ST FRANCIS

Submitted by: David Chadwick of F W WEBB CO on 3/29/2017

Submitted to: No Engineer Name Specified

## DIMENSIONAL DRAWING

### FTXS15,18\_LVJU





## Submittal Data Sheet

0.5-Ton Wall Mounted Unit - CTXS07LVJU

Project: ST FRANCIS

Submitted by: David Chadwick of F W WEBB CO on 3/29/2017

Submitted to: No Engineer Name Specified

## FEATURES

- IR controller included
- 3-D airflow - Auto-swing (up, down and right, left)
- Intelligent eye occupancy sensor
- Titanium apatite photocatalytic air purifying
- Hot start technology
- Auto-restart (after power failure)

## BENEFITS

- 12 year limited parts and compressor warranty with online registration
- 5 Year limited parts warranty for commercial applications





## Submittal Data Sheet

0.5-Ton Wall Mounted Unit - CTXS07LVJU

Project: ST FRANCIS

Submitted by: David Chadwick of F W WEBB CO on 3/29/2017

Submitted to: No Engineer Name Specified

### PERFORMANCE

|                                  |              |                               |   |
|----------------------------------|--------------|-------------------------------|---|
| Indoor Unit Model No.            | CTXS07LVJU   | Indoor Unit Name:             | 0.5-Ton Wall Mounted Unit                                 |
| Type:                            | Wall Mounted | Rated Cooling Conditions:     | Indoor (°F DB/WB): 80 / 67<br>Ambient (°F DB/WB): 95 / 75 |
| Rated Cooling Capacity (Btu/hr): | 7,000        | Rated Heating Conditions:     | Indoor (°F DB/WB): 70 / 60<br>Ambient (°F DB/WB): 47 / 43 |
| Sensible Capacity (Btu/hr):      |              | Rated Piping Length(ft):      |   |
| Cooling Input Power (kW):        | 0.020        | Rated Height Separation (ft): |   |
| Rated Heating Capacity (Btu/hr): | 7,000        |                               |   |
| Heating Input Power (kW):        | 0.02         |                               |   |

### INDOOR UNIT DETAILS

|                                       |                                       |  |                 |
|---------------------------------------|---------------------------------------|--|-----------------|
| Power Supply (V/Hz/Ph):               | 208-230 / 60 / 1                      | Airflow Rate (H/M/L/SL) (CFM):           | 332/261/194/145 |
| Power Supply Connections:             | See Outdoor Unit for Electrical Specs | Moisture Removal (Gal/hr):               |                 |
| Min. Circuit Amps MCA (A):            |                                       | Gas Pipe Connection (inch):              | 3/8             |
| Max Overcurrent Protection (MOP) (A): |                                       | Liquid Pipe Connection (inch):           | 1/4             |
| Dimensions (HxWxD) (in):              | 11-5/8 x 31-1/2 x 8-7/16              | Condensate Connection (inch):            | 5/8             |
| Panel (HxWxD) (in):                   |                                       | Sound Pressure (H/M/L/SL) (dBA):         | 38/32/25/22     |
| Net Weight (lb):                      | 20                                    | Sound Power Level (dBA):                 | 54              |
| Panel Weight (lb):                    |                                       | Ext. Static Pressure (Rated/Max) (inWg): | 0.00 / 0.00     |



## Submittal Data Sheet

0.5-Ton Wall Mounted Unit - CTXS07LVJU

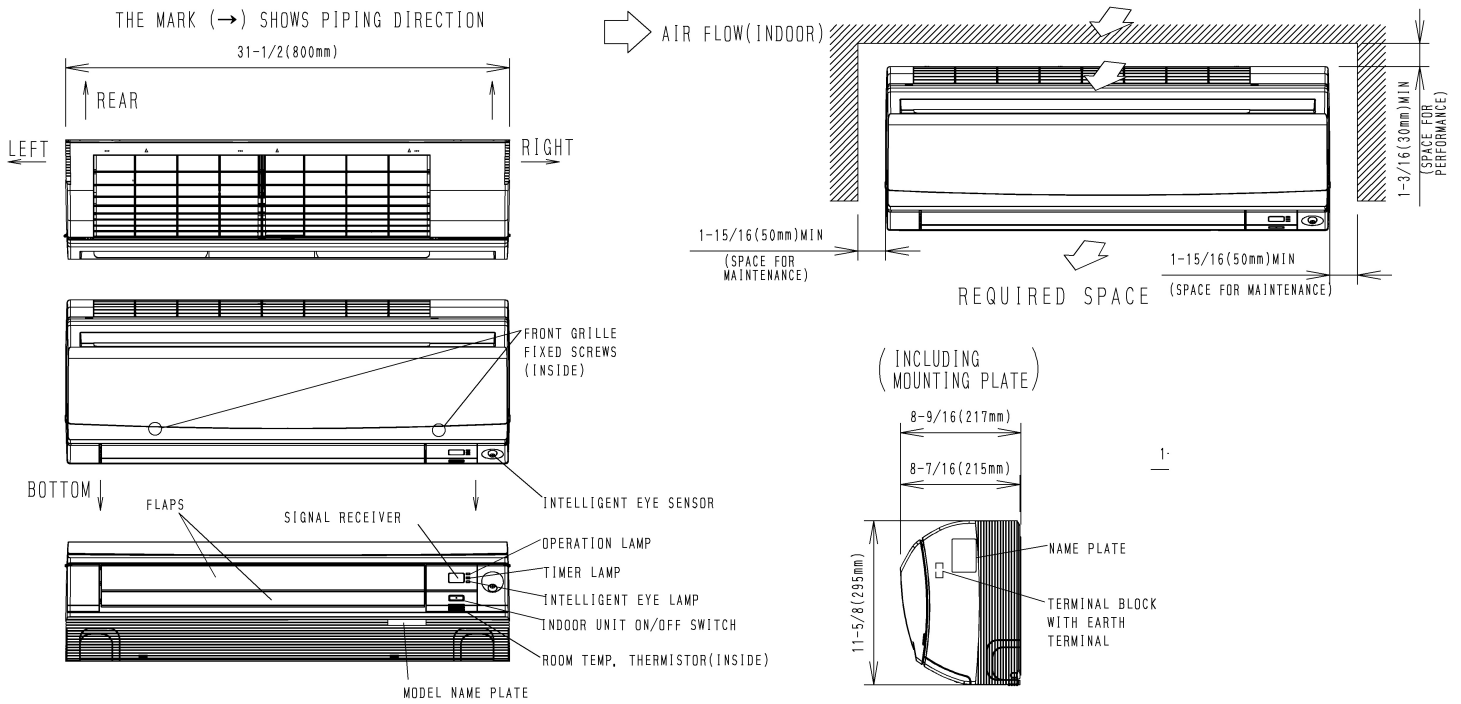
Project: ST FRANCIS

Submitted by: David Chadwick of F W WEBB CO on 3/29/2017

Submitted to: No Engineer Name Specified

## DIMENSIONAL DRAWING

CTXS07LVJU







## Submittal Data Sheet

2 PORT HP, DUCTLESS OD 1.5 TON - 2MXL18QMVJU

Project: ST FRANCIS

Submitted by: David Chadwick of F W WEBB CO on 3/29/2017

Submitted to: No Engineer Name Specified

## FEATURES

- Enhanced Capacity
- High-efficiency inverter driven swing compressor
- Cooling Operating Limit (14°~114.8°F/-10°~46°C)
- Heating Operating Limit (-13°~60°F/-25°~15.6°C)
- Anti-corrosion treatment of outdoor heat exchanger
- Specialized drain pan design for improved cold climate drainage
- Chargeless 131.6ft (40 m)

## BENEFITS

- 12 Year limited parts warranty with online registration
- 5 Year limited parts warranty for commercial applications
- Priority-room setting
- COOL / HEAT mode lock
- High efficiency cooling and heating operation provides utility bill savings
- Multiple indoor unit style options: wall mounted, floor standing, ceiling cassette, slim duct





## Submittal Data Sheet

2 PORT HP, DUCTLESS OD 1.5 TON - 2MXL18QMVJU

Project: ST FRANCIS

Submitted by: David Chadwick of F W WEBB CO on 3/29/2017

Submitted to: No Engineer Name Specified

### PERFORMANCE

|                                    |   |                                    |   |
|------------------------------------|---|------------------------------------|---|
| Outdoor Unit Model No.             | 2MXL18QMVJU   | Outdoor Unit Name:                 | 2 PORT HP, DUCTLESS OD 1.5 TON                            |
| Type:                              | Heat Pump   |                                    |   |
| Rated Cooling Conditions:          | Indoor (°F DB/DB): 80 / 67<br>Ambient (°F DB/WB): 95 / 75 | Rated Heating Conditions:          | Indoor (°F DB/WB): 70 / 60<br>Ambient (°F DB/WB): 47 / 43 |
| Rated Piping Length(ft):           | 25  |                                    |   |
| Rated Height Difference (ft):      | 49.00   |                                    |   |
| Rated Cooling Capacity (Btu/hr):   | 18,000  | Rated Heating Capacity (Btu/hr):   | 18,900  |
| Cooling Input Power (kW):          | Heating Input Power (kW):                                 |                                    |   |
| EER (Non-Ducted/Ducted):           | 12.70 / 10.10   | Heating COP (Non-Ducted/Ducted):   | 4.2 /   |
| SEER (Non-Ducted/Ducted):          | 17.00 / 14.00   | HSPF (Non-Ducted/Ducted):          | 10.3 / 8.2  |
| Max/Min Cooling Capacity (Btu/hr): | /   | Max/Min Heating Capacity (Btu/hr): |   |

### OUTDOOR UNIT DETAILS

|                                       |                            |                                |          |
|---------------------------------------|----------------------------|--------------------------------|----------|
| Power Supply (V/Hz/Ph):               | 208-230 / 60 / 1           | Compressor Type:               | Inverter |
| Power Supply Connections:             | L1, L2, Ground             | Capacity Control Range (%):    | -        |
| Min. Circuit Amps MCA (A):            | 17.10                      | Airflow Rate (H) (CFM):        | 2,150    |
| Max Overcurrent Protection (MOP) (A): | 20.00                      | Gas Pipe Connection (inch):    | 3/8      |
| Max Starting Current MSC(A):          | 15.50                      | Liquid Pipe Connection (inch): | 1/4      |
| Rated Load Amps RLA(A):               | 15.5                       | Sound Pressure (H) (dBA):      | 50       |
| Dimensions (HxWxD) (in):              | 28-15/16 x 34-1/4 x 12-5/8 | Sound Power Level (dBA):       |          |
| Net Weight (lb):                      | 139                        |                                |          |



# Submittal Data Sheet

2 PORT HP, DUCTLESS OD 1.5 TON - 2MXL18QMVJU

Project: ST FRANCIS

Submitted by: David Chadwick of F W WEBB CO on 3/29/2017

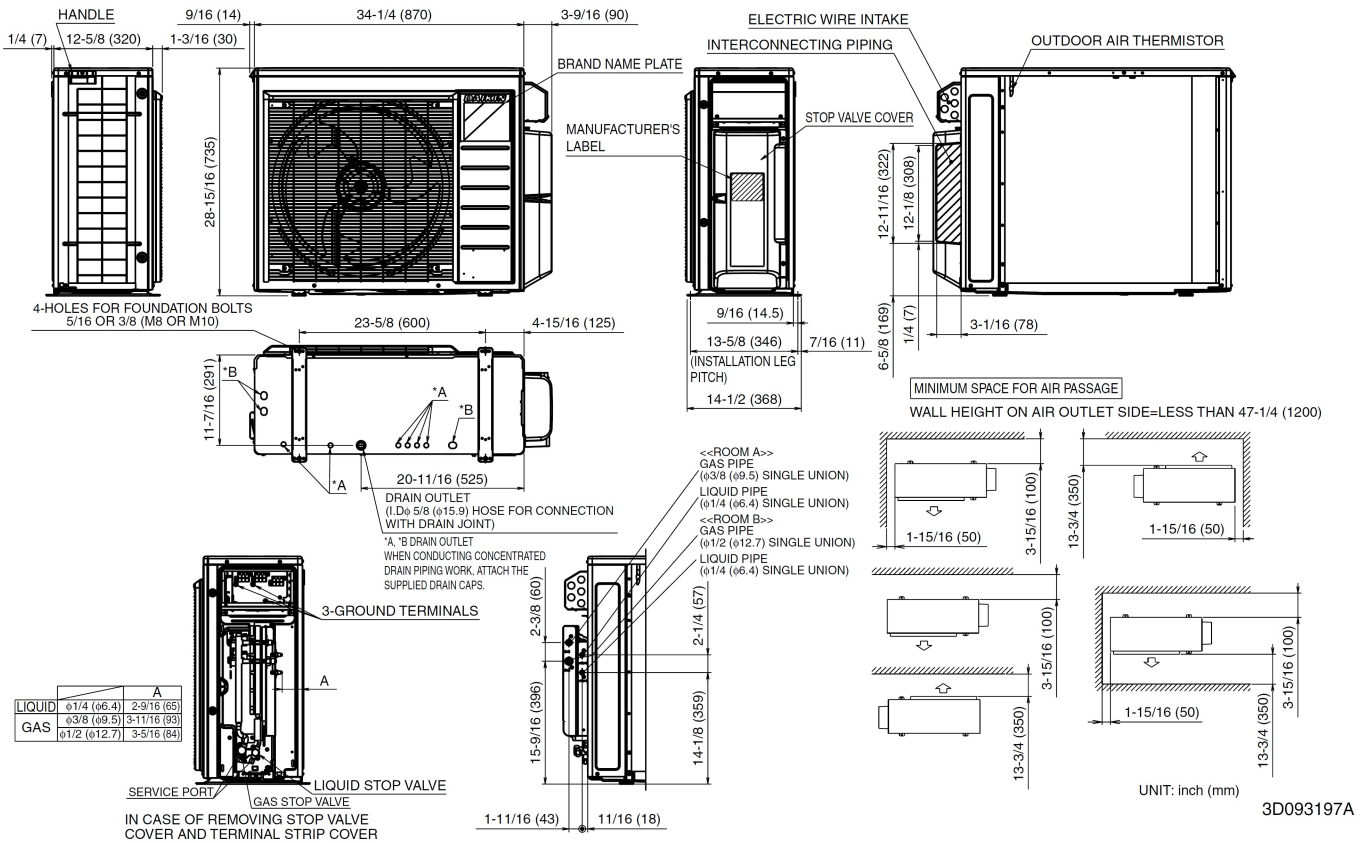
Submitted to: No Engineer Name Specified

**SYSTEM DETAILS**

|  |        |                                   |          |
|--|--------|-----------------------------------|----------|
| Refrigerant Type:                      | R-410A | Cooling Operation Range (°F DB):  | 14 - 115 |
| Holding Refrigerant Charge (lbs):      | 6.2    | Heating Operation Range (°F WB):  | -13 - 72 |
| Additional Charge (lb/ft):             | 0.21   | Max. Pipe Length (Vertical) (ft): | 49       |
| Pre-charge Piping (Length) (ft):       |        | Cooling Range w/Baffle (°F DB):   | 14 - 115 |
| Max. Pipe Length (Total) (ft):         | 164    | Heating Range w/Baffle (°F WB):   | -        |
| Max Height Separation (Ind to Ind ft): | 49     |                                   |          |

## DIMENSIONAL DRAWING

### 2MXL18QMVJU



Daikin North America LLC, 5151 San Felipe, Suite 500, Houston, TX, 77056

Daikin City Generated Submittal Data

[www.daikinac.com](http://www.daikinac.com) [www.daikincomfort.com](http://www.daikincomfort.com)

(Daikin's products are subject to continuous improvements. Daikin reserves the right to modify product design, specifications and information in this data sheet without notice and without incurring any obligations)

Submittal Date: 3/29/2017 7:33:08 PM

Page 3 of 3