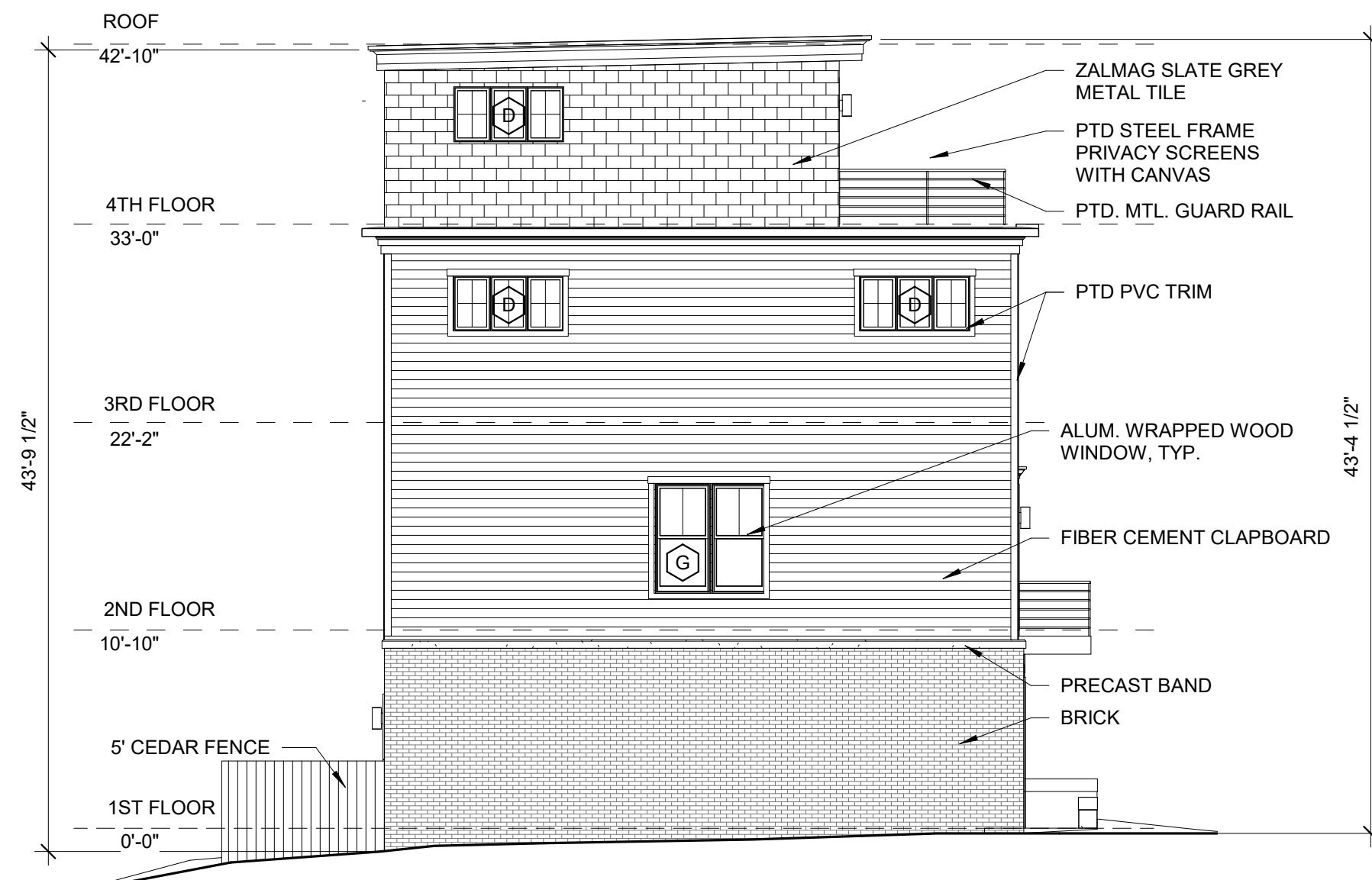


**5 | PARTIAL NORTH ELEVATION**  
1/8" = 1'-0"



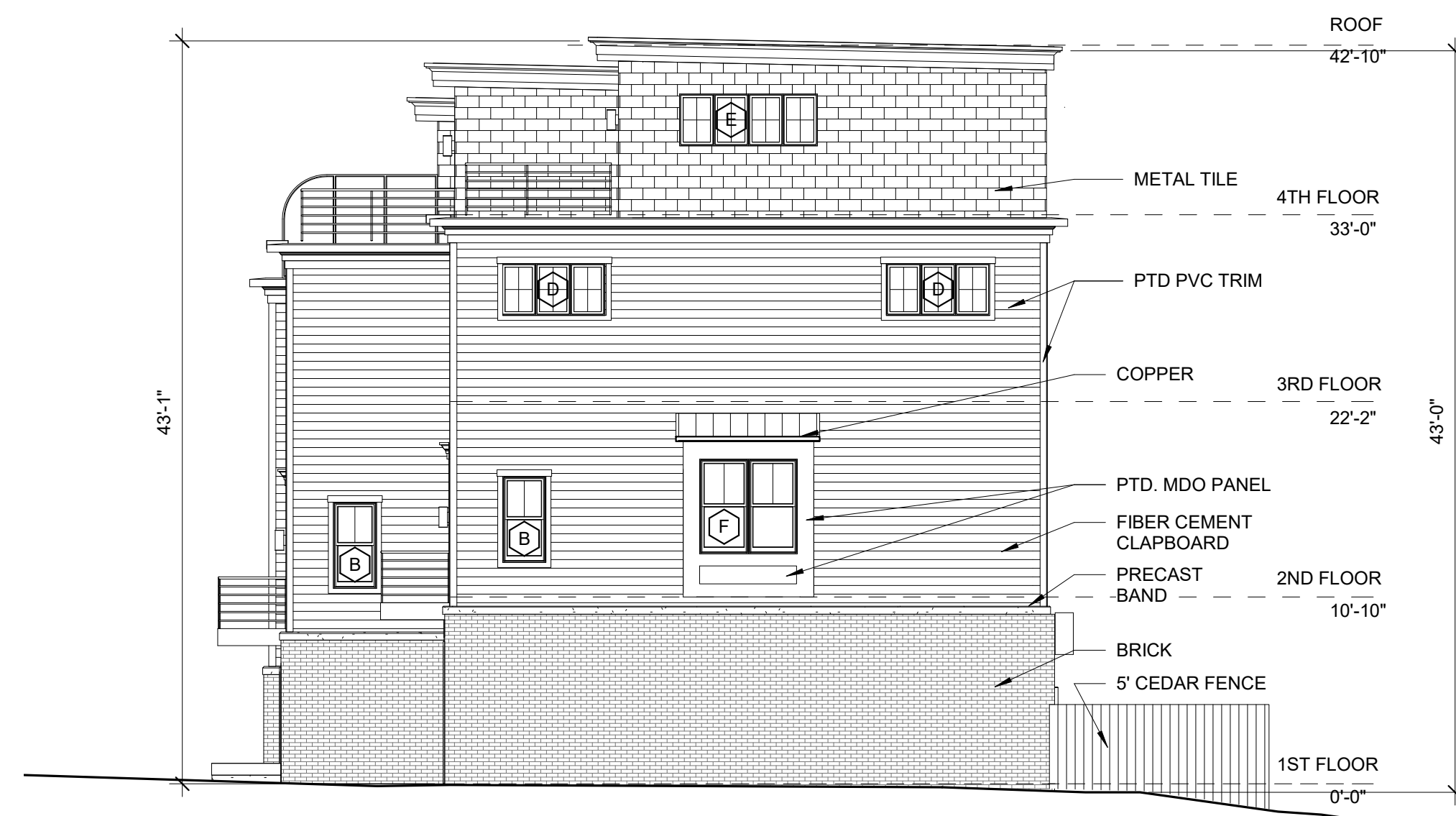
**3 | EAST ELEVATION**  
1/8" = 1'-0"



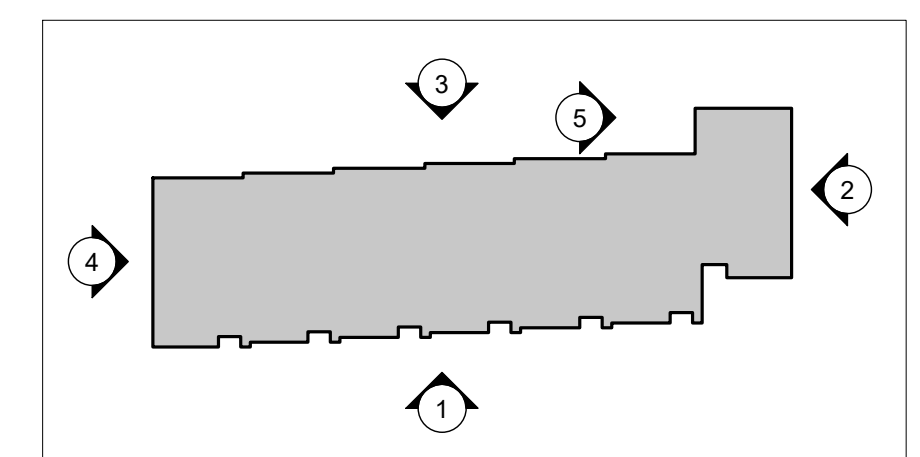
**4 | NORTH ELEVATION**  
1/8" = 1'-0"



**1 | WEST ELEVATION**  
1/8" = 1'-0"



**2 | SOUTH ELEVATION**  
1/8" = 1'-0"



AVERAGE BUILDING HEIGHT FROM GRADE TO TOP OF BEAM  
(SE 43'-0" + SW 43'-1" + NE 43'-9 1/2" + NW 43'-4 1/2") / 4 = 43'-4"