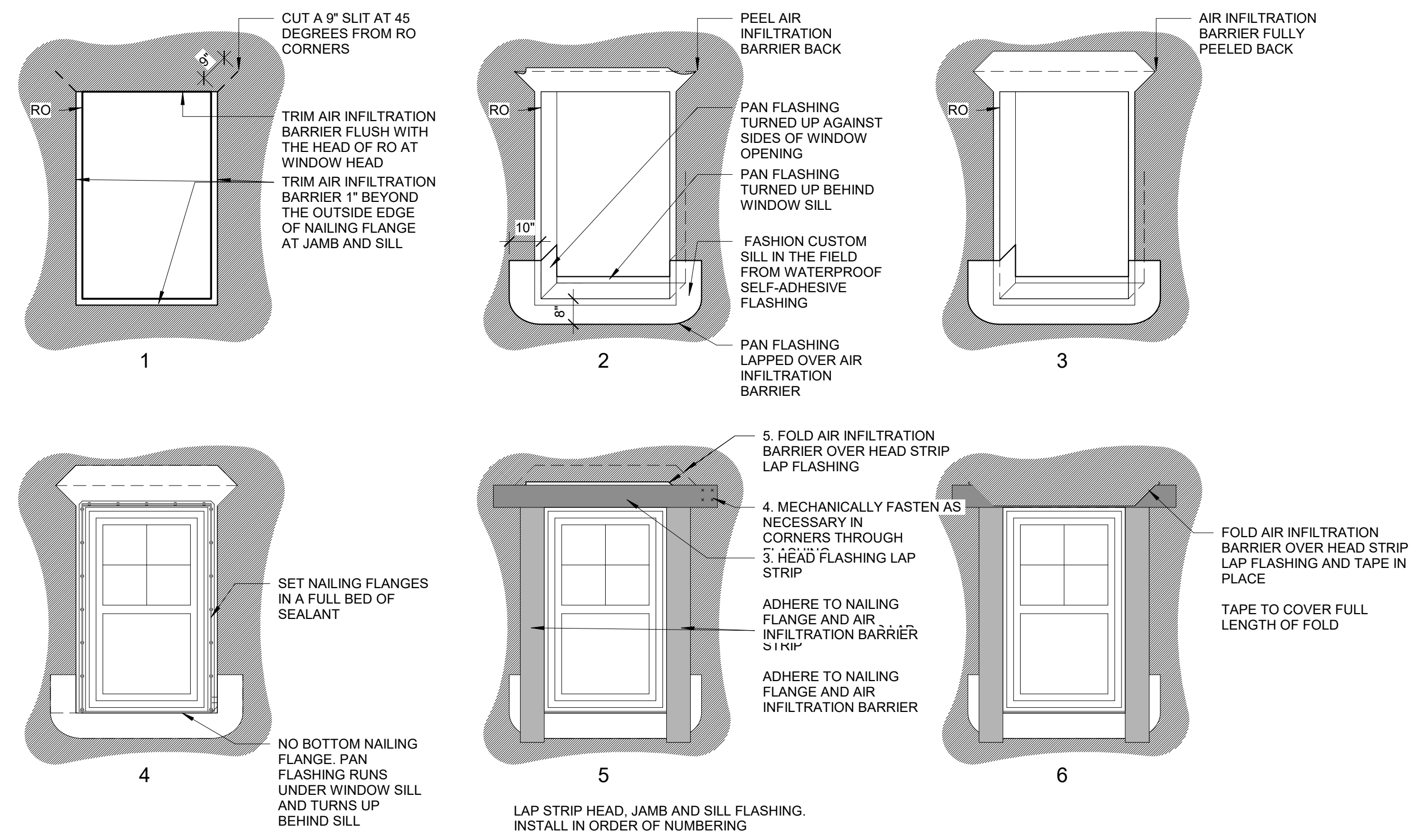


**1 WINDOW ELEVATIONS**  
1/2" = 1'-0"

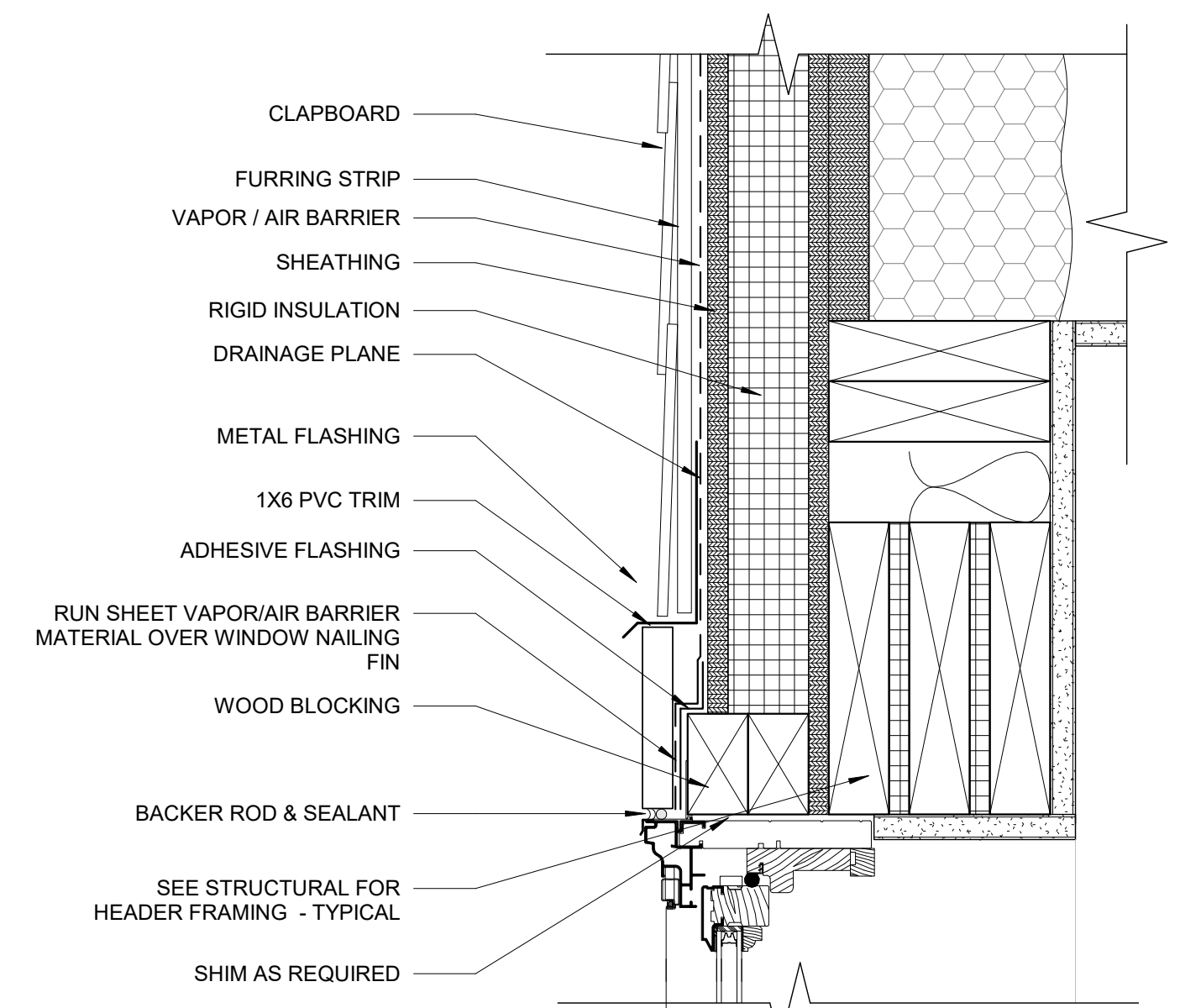


**ORDER OF INSTALLATION OF WATERPROOFING AT WINDOWS. WATER PROOFING AT STOREFRONT AND DOORS USE STEPS 1-3**

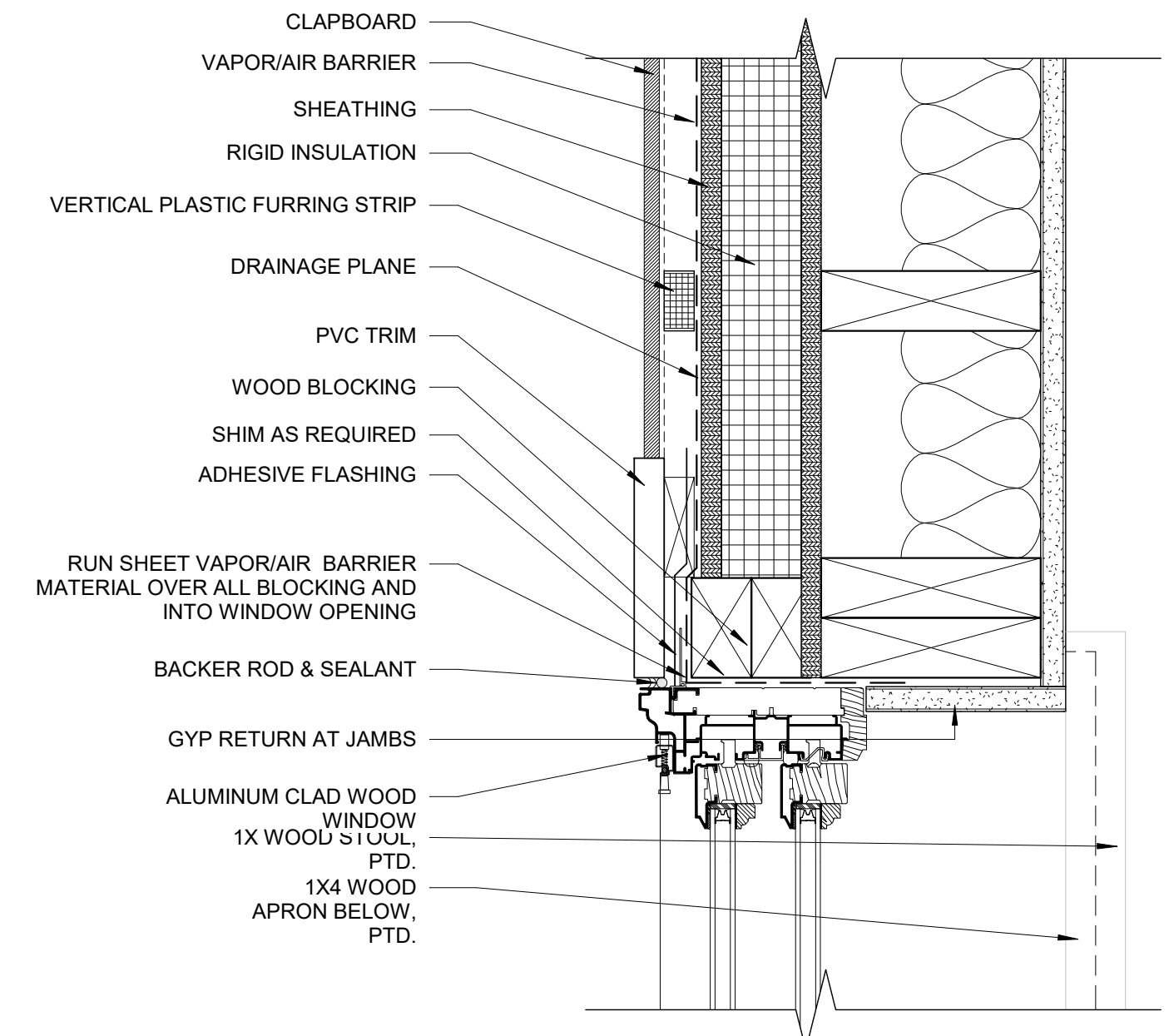
- NOTES:  
1. INSTALL AIR INFILTRATION BARRIER IN ORDER AS SHOWN BY NUMBERS.  
2. IF APPLICABLE, LEAVE RELEASE PAPER ON LOWER HALF OF SILL FLASHING UNTIL FUTURE TIE-IN.  
3. INSTALL FLASHING AND AIR INFILTRATION BARRIER TO FORM WATER SHEDDING LAPS  
4. COORDINATE WITH FLASHING REQUIREMENTS OF WINDOW MANUFACTURER  
5. FOLLOW MANUFACTURER'S RECOMMENDATIONS FOR INSTALLATION.

NOTE: MOCK-UP FIRST WINDOW TO BE APPROVED BY MSHA, AND ARCHITECT PRIOR TO ANY INSTALLATION

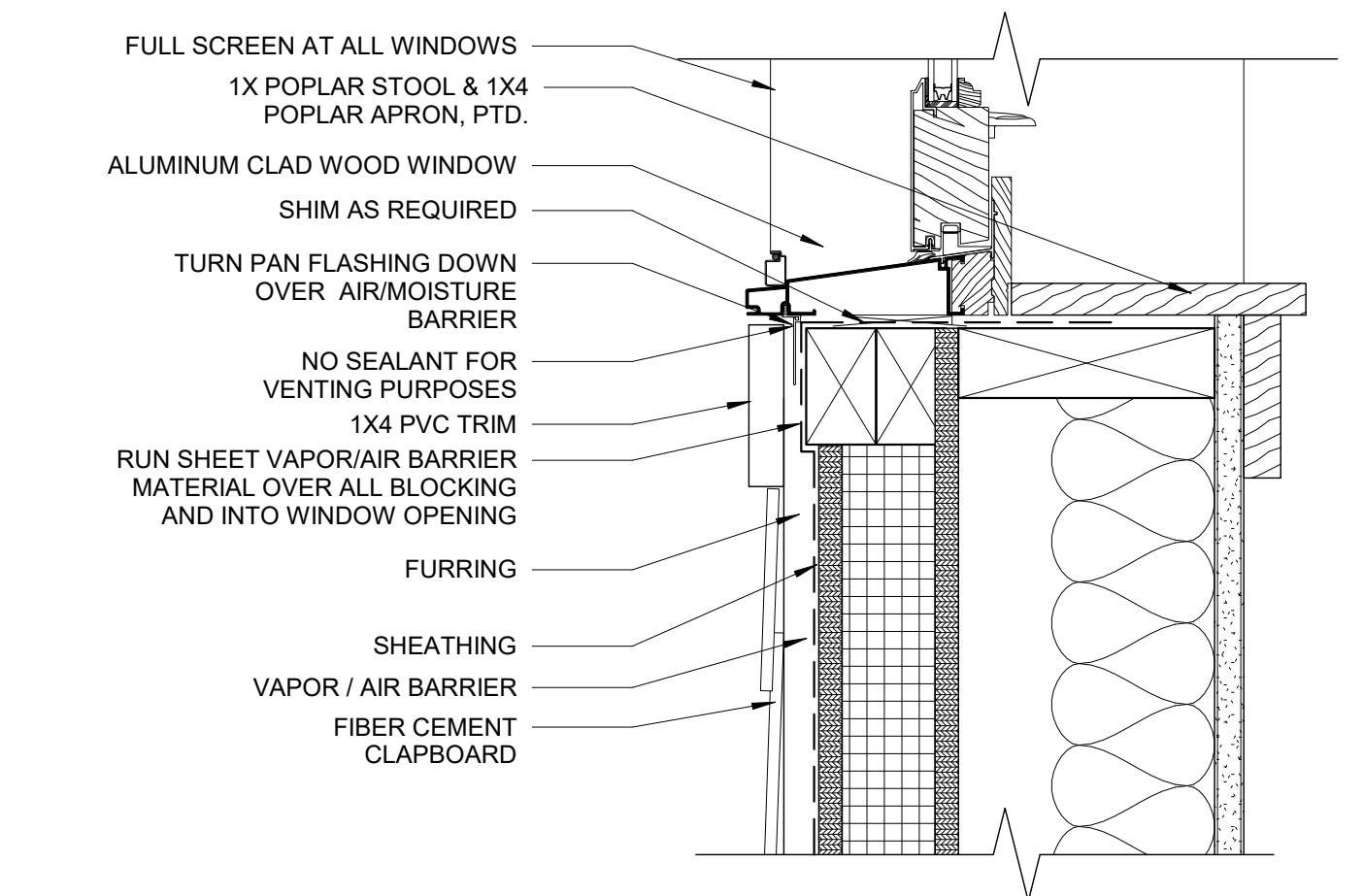
**2 ORDER OF INSTALLATION OF WATERPROOFING AT WINDOWS**  
3/8" = 1'-0"



**3 WINDOW HEAD AT CLAPBOARD**  
3" = 1'-0"



**4 WINDOW JAMB AT CLAPBOARD**  
3" = 1'-0"



**5 WINDOW SILL AT CLAPBOARD**  
3" = 1'-0"