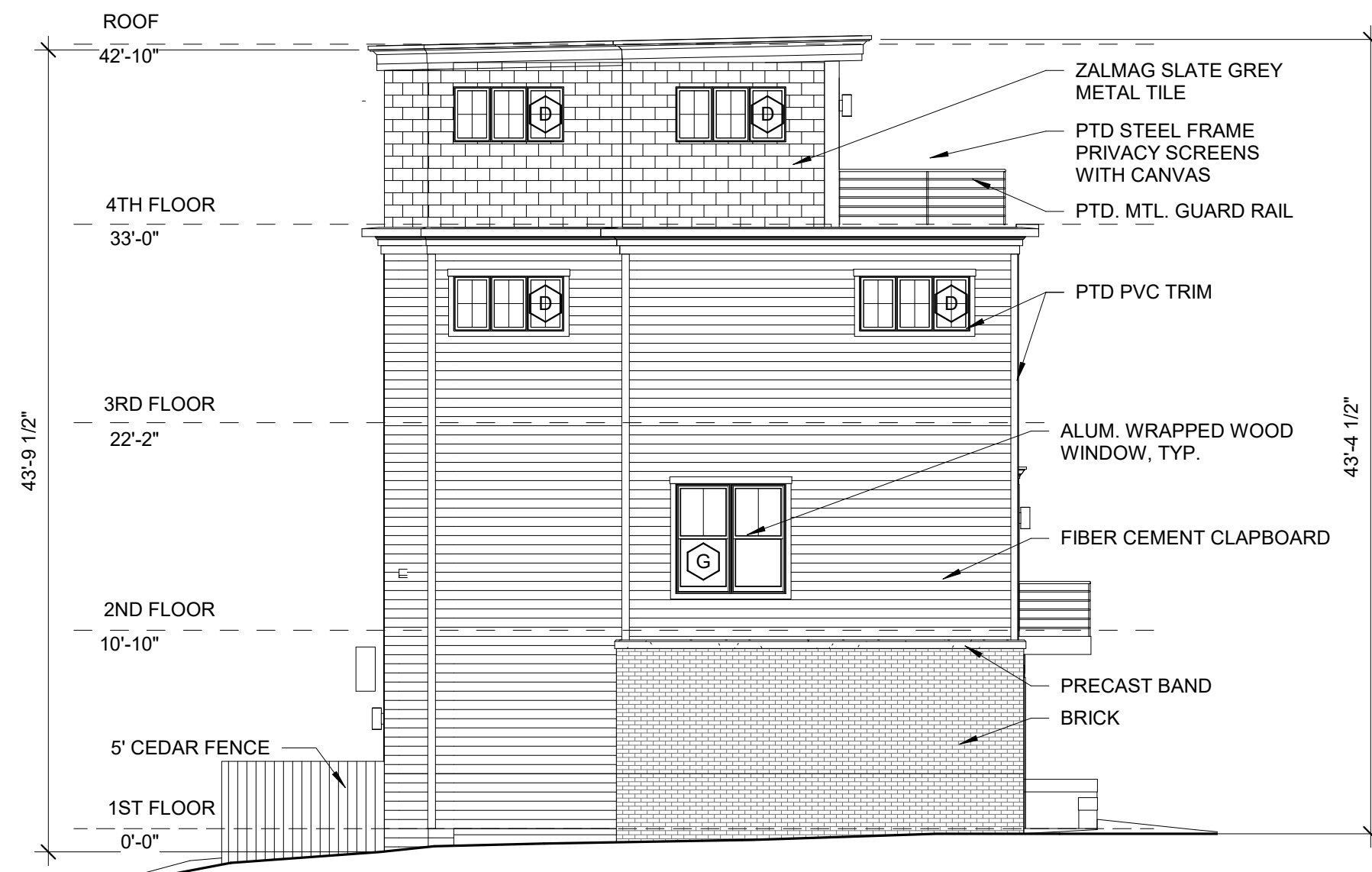


5 | PARTIAL NORTH ELEVATION
1/8" = 1'-0"



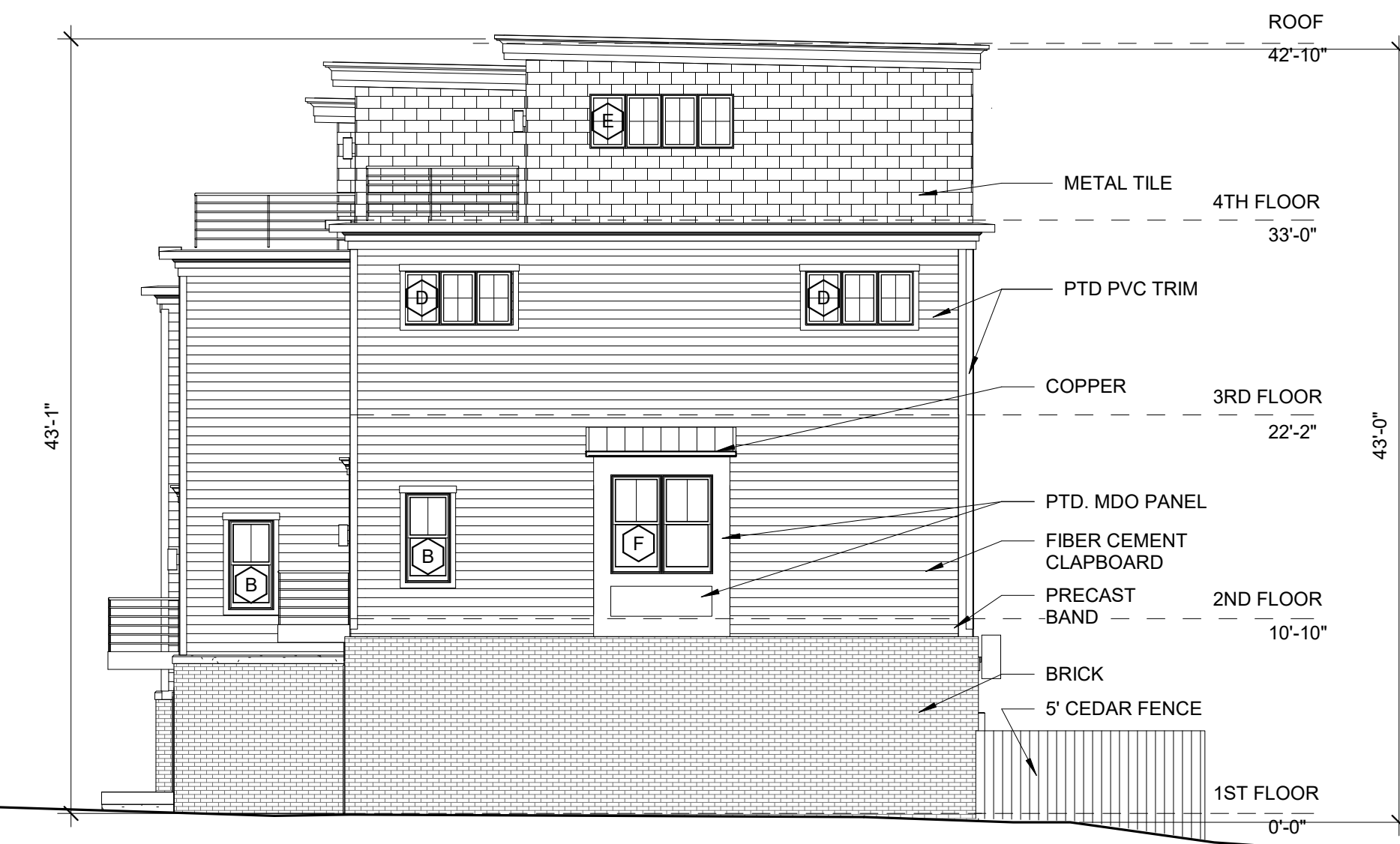
3 | EAST ELEVATION
1/8" = 1'-0"



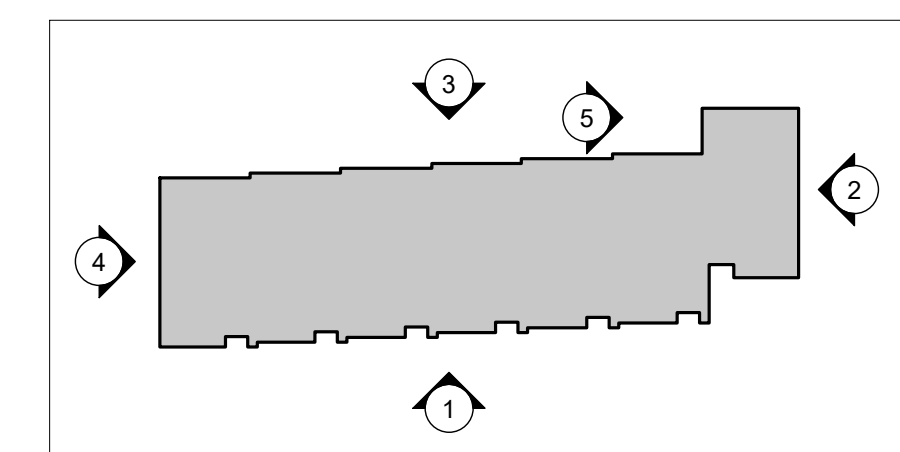
4 | NORTH ELEVATION
1/8" = 1'-0"



1 | WEST ELEVATION
1/8" = 1'-0"



2 | SOUTH ELEVATION
1/8" = 1'-0"



AVERAGE BUILDING HEIGHT FROM GRADE TO TOP OF BEAM
(SE 43'-0" + SW 43'-1" + NE 43'-9 1/2" + NW 43'-4 1/2") / 4 = 43'-4"