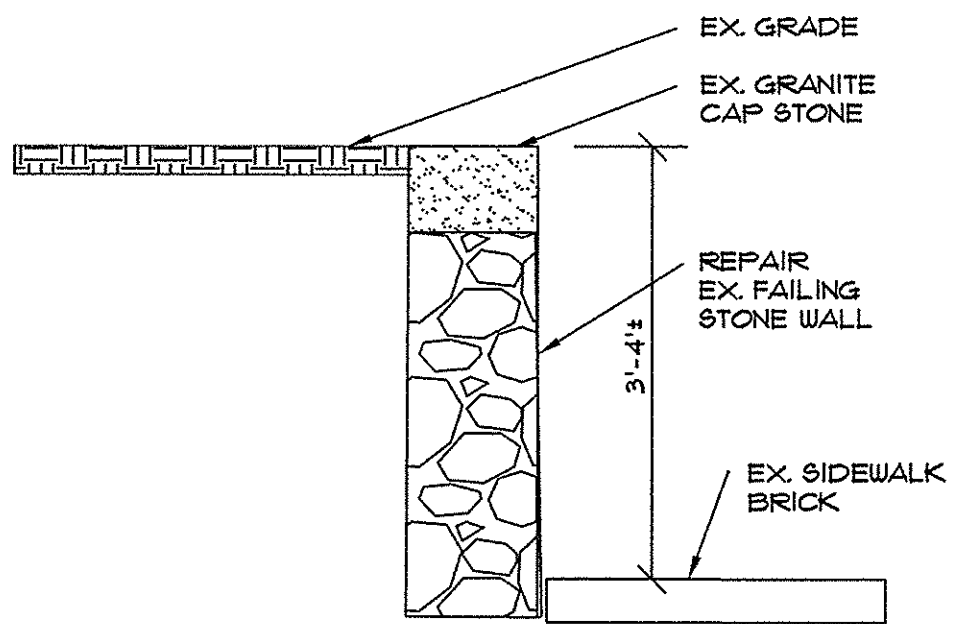
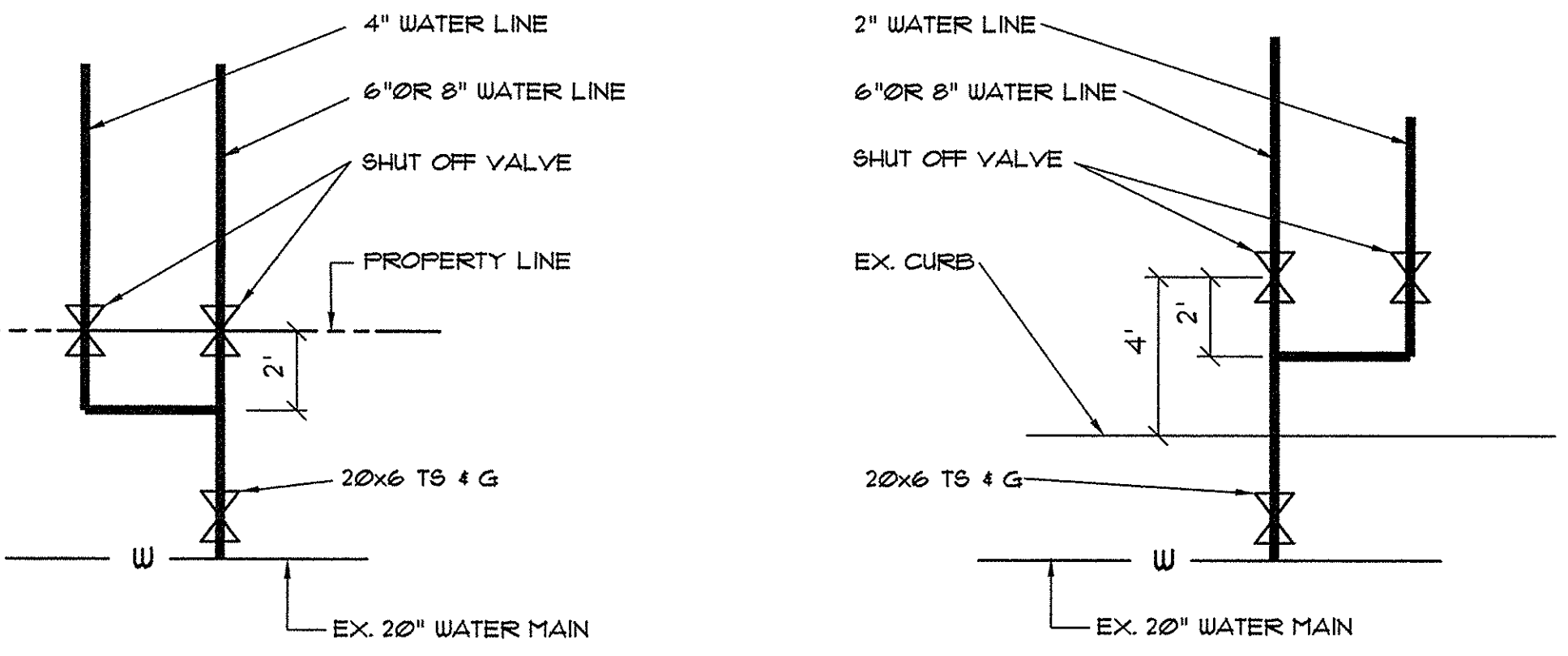


LEGEND

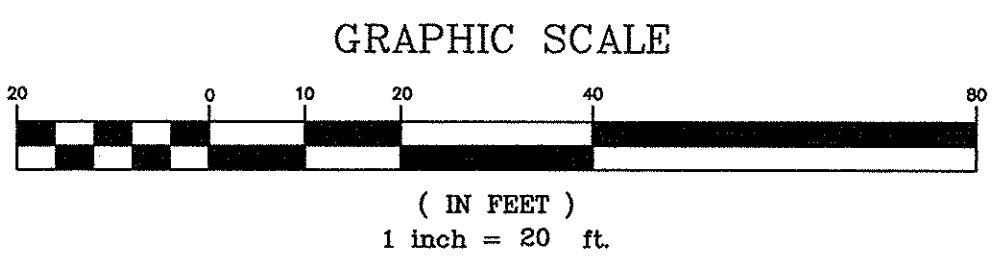
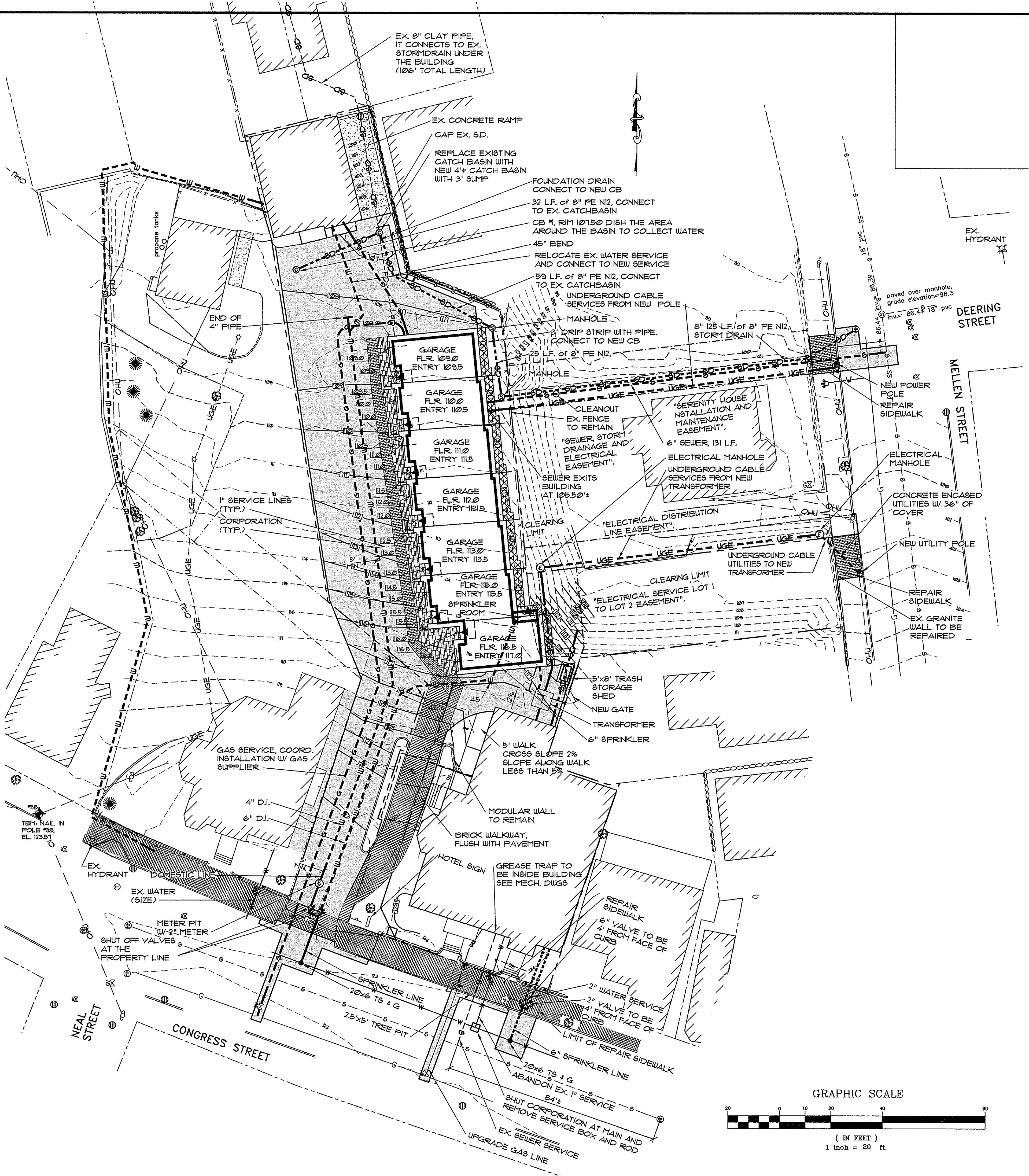
EXISTING	PROPOSED
--- PROPERTY LINE	--- EDGE OF PAVEMENT
- - - ADJUTERS PROPERTY EASEMENT	--- VERTICAL GRANITE CURB
--- EDGE OF PAVEMENT	--- BUILDING
--- BUILDING CONTOURS	--- BUILDING ENTRY/EGRESS
--- CURB	--- BUILDING OVERHEAD DOOR
--- GAS LINE	--- CONTOURS
--- SANITARY SEWER	--- GAS LINE
--- STORMDRAIN	--- SANITARY SEWER
--- OVERHEAD UTILITY	--- STORMDRAIN
--- UNDERGROUND UTILITY	--- OVERHEAD UTILITY
--- WATER LINE	--- UNDERGROUND UTILITY
--- CATCH BASIN	--- FOUNDATION DRAIN
--- SEWER MANHOLE	--- DRIPSTRIP W/ UNDERDRAIN
--- HYDRANT	--- SPOT GRADE
--- WATER VALVE	--- CATCH BASIN
--- GAS VALVE	--- DRAIN MANHOLE
--- POLE MOUNTED TRANSFORMER	--- SANITARY MANHOLE
--- UTILITY POLE W/ GUY WIRE	--- TRANSFORMER
--- LIGHT POLE	--- UTILITY POLE
--- AREA LIGHT ON POLE	--- SURFACE DRAINAGE
--- SIGN	--- WATER SHUT OFF
--- FENCE	--- STOCKADE FENCE
--- BENCHMARK	--- BOLLARD
	--- RULL DEPTH BITUMINOUS PVMT
	--- BRICK PAVERS
	--- CONCRETE PAVERS
	--- GREASE TRAP
	--- PHONE PEDESTAL



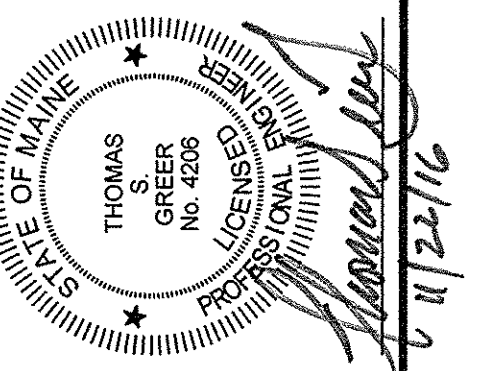
STONE WALL REPAIR
N.T.S.



WATERMAIN TAPS
N.T.S.



PINKHAM & GREER
CIVIL ENGINEERS
28 WINDHAM AVE. PORTLAND, ME 04103
TEL: 207.861.5442 FAX: 207.781.4249



REV.	DATE	DESCRIPTION
5	11/18/16	RELOCATED SPRINKLER ROOM AND WATER SUPPLY LINE
4	9/5/16	ADDED TRANSFORMER
3	9/29/16	ADDED EASEMENTS AND STAFF COMMENTS
2	6/7/16	REVISED UTILITIES
1	4/8/16	PER STAFF COMMENTS

APPLICANT: DENOVO, LLC
47 WAITES LANDING ROAD
FALMOUTH, MAINE

SCALE: AS SHOWN
DATE: FEBRUARY 22, 2016
PROJECT: 15156

749 CONGRESS STREET
749 CONGRESS STREET
PORTLAND, MAINE

GRADING & UTILITIES PLAN

C1.4