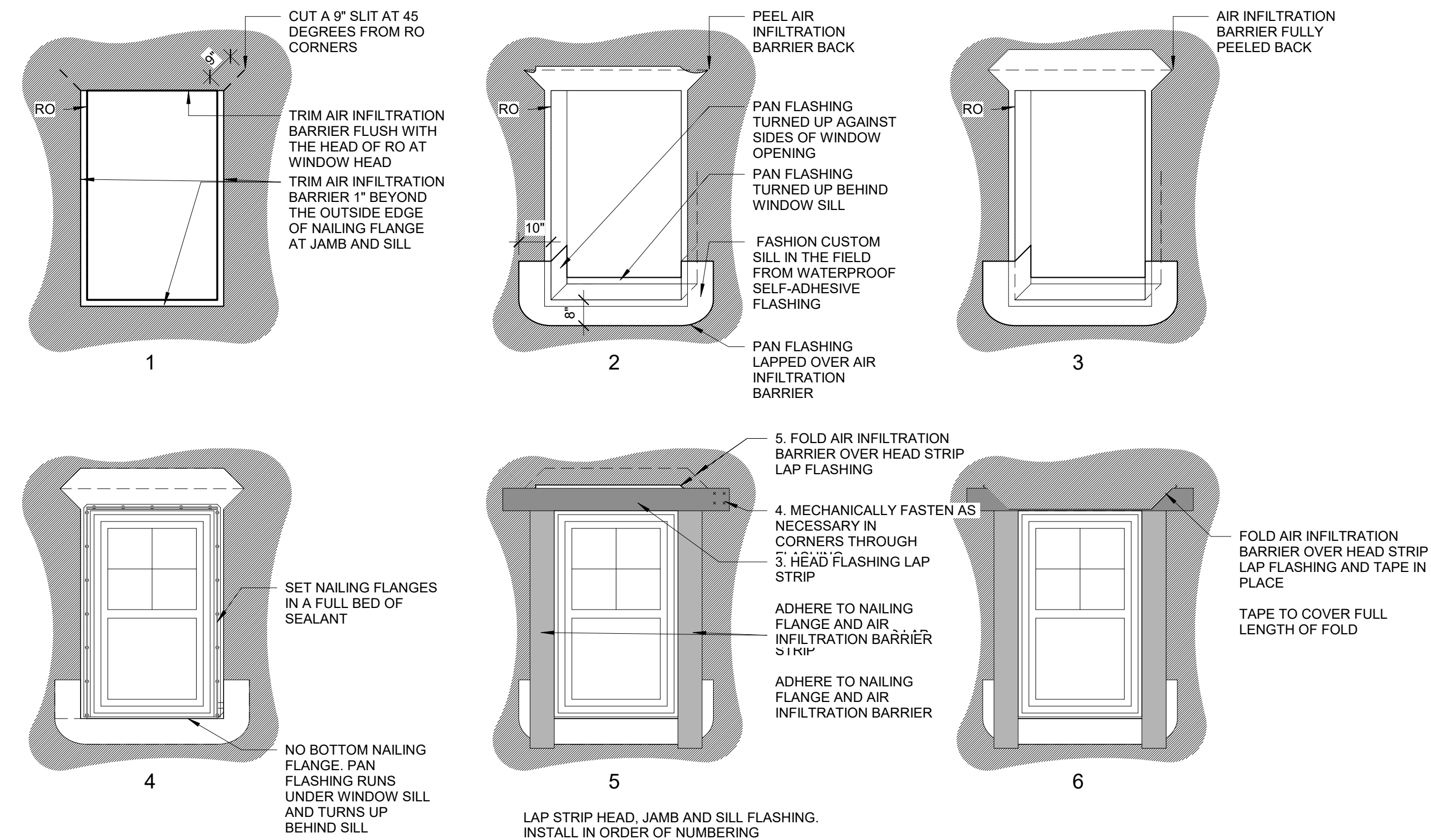


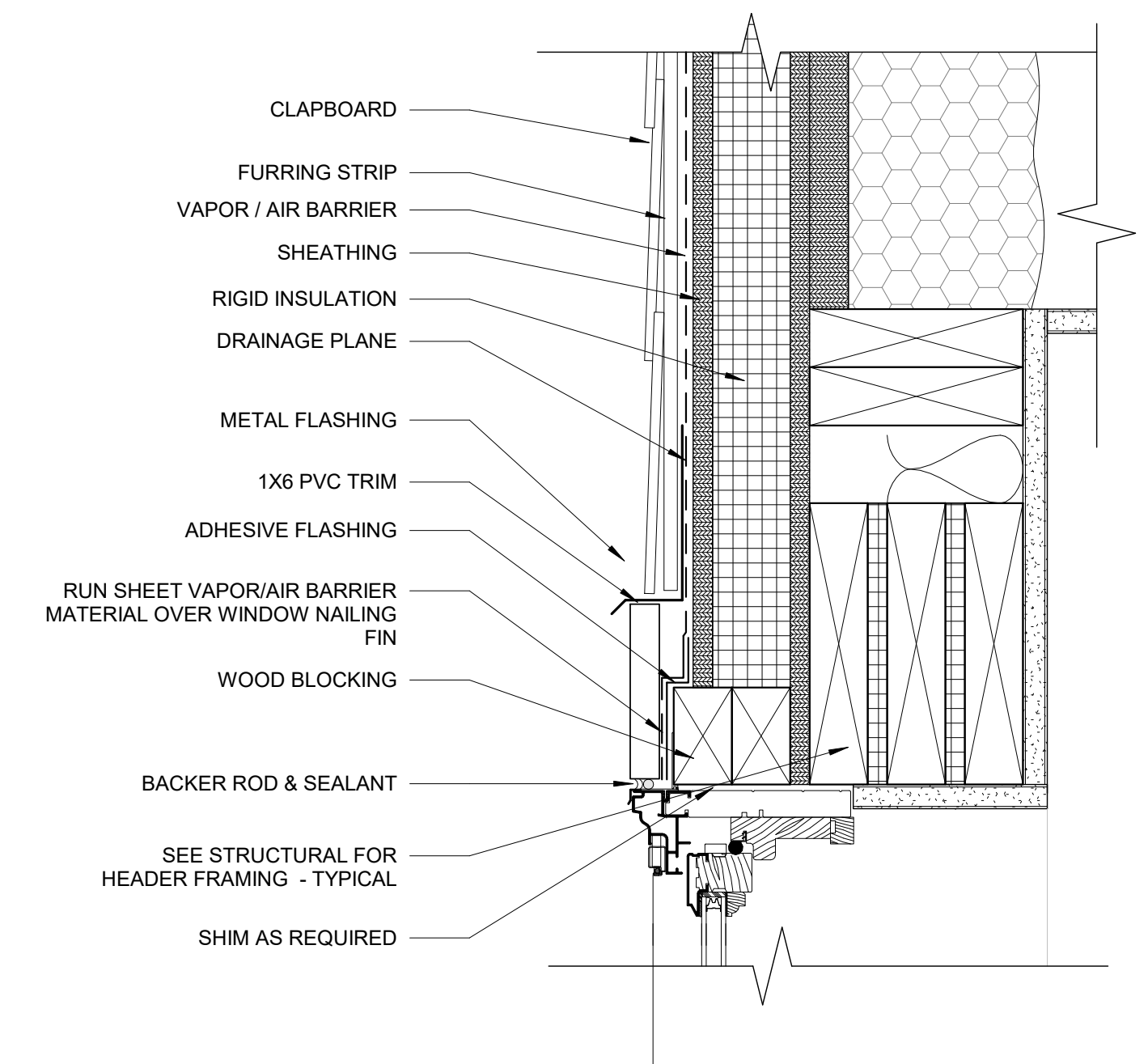
1 WINDOW ELEVATIONS
1/2" = 1'-0"



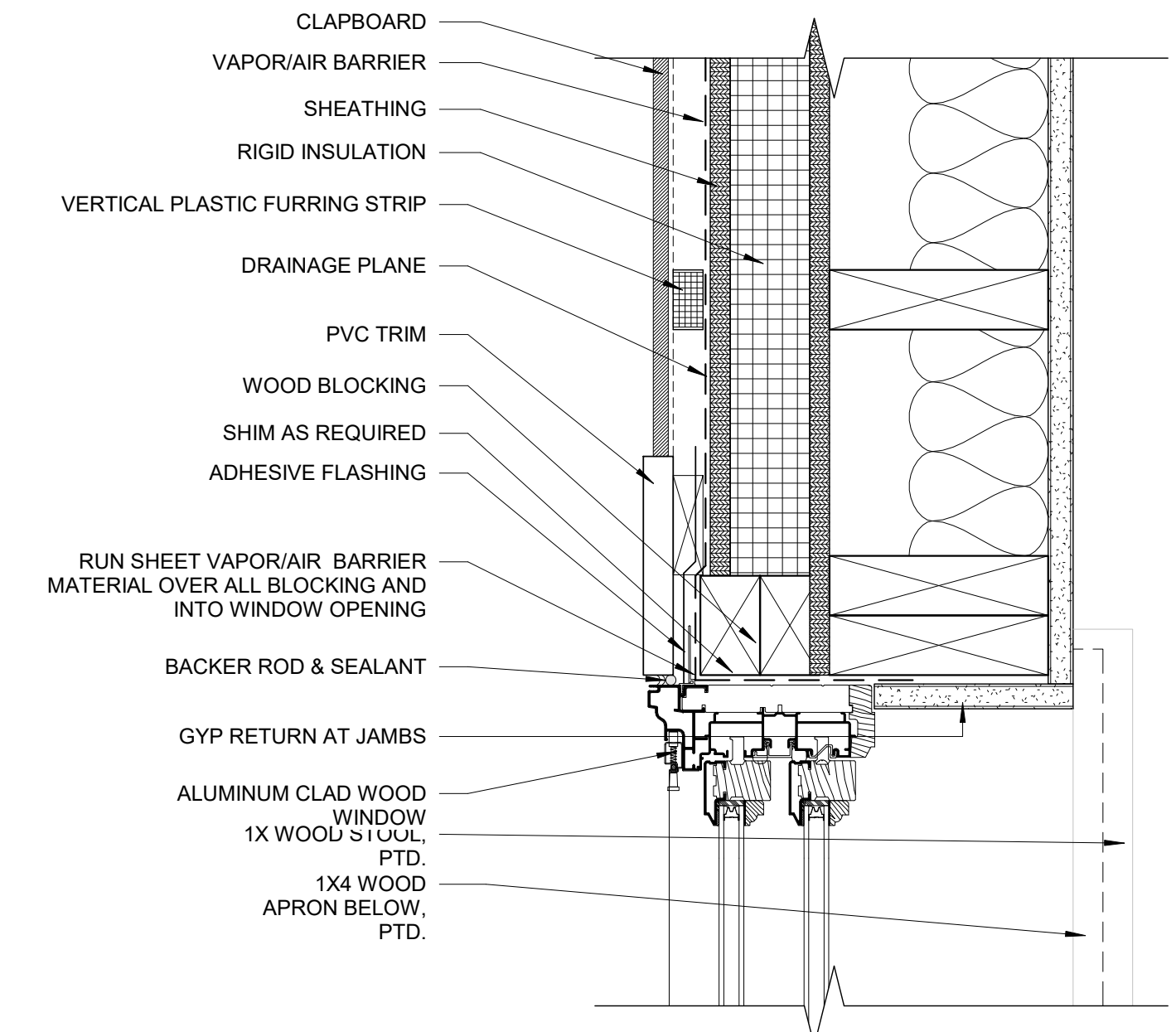
ORDER OF INSTALLATION OF WATERPROOFING AT WINDOWS.
WATER PROOFING AT STOREFRONT AND DOORS USE STEPS 1-3

- NOTES:
1. INSTALL AIR INFILTRATION BARRIER IN ORDER AS SHOWN BY NUMBERS.
 2. IF APPLICABLE, LEAVE RELEASE PAPER ON LOWER HALF OF SILL FLASHING UNTIL FUTURE TIE-IN.
 3. INSTALL FLASHING AND AIR INFILTRATION BARRIER TO FORM WATER SHEDDING LAPS
 4. COORDINATE WITH FLASHING REQUIREMENTS OF WINDOW MANUFACTURER
 5. FOLLOW MANUFACTURER'S RECOMMENDATIONS FOR INSTALLATION.

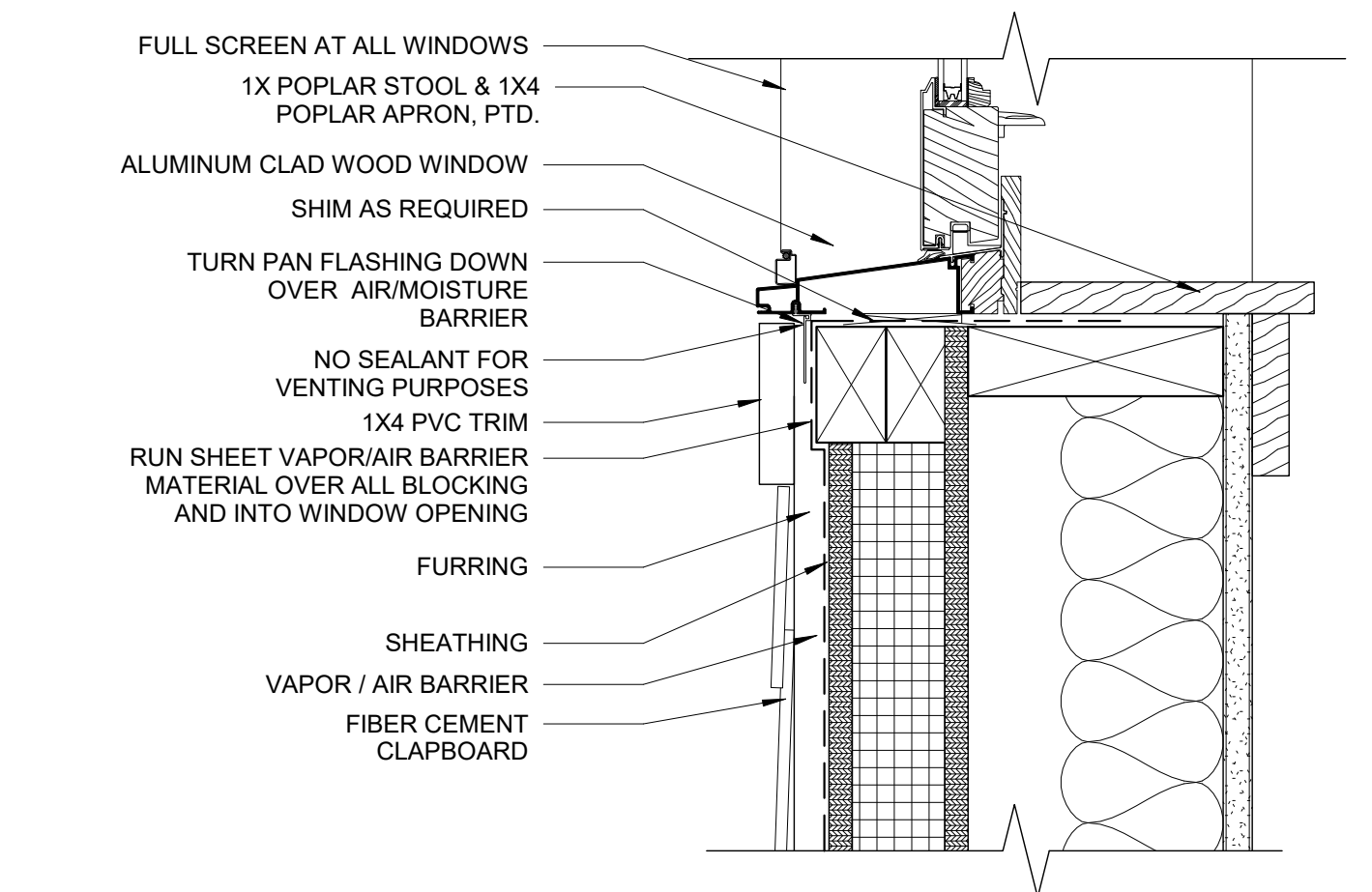
2 ORDER OF INSTALLATION OF WATERPROOFING AT WINDOWS
3/8" = 1'-0"



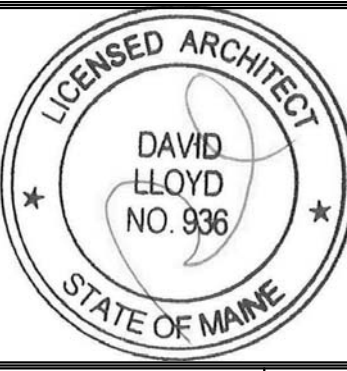
5 WINDOW HEAD AT CLAPBOARD
3" = 1'-0"



4 WINDOW JAMB AT CLAPBOARD
3" = 1'-0"



3 WINDOW SILL AT CLAPBOARD
3" = 1'-0"



Prepared For:
Bramhall Row, LLC

Consultant:
ARCHETYPE architects
48 Union Wharf Portland, Maine 04101
(207) 772-6022 ARCHETYPE@ARCHETYPEPA.COM

Project:
BRAMHALL ROW
749 CONGRESS ST
PORTLAND, MAINE

Revisions:
Date: 21 NOV 2016
Scale: As indicated
WINDOW SCHEDULE

A8.02