
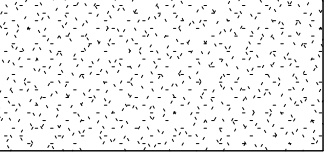


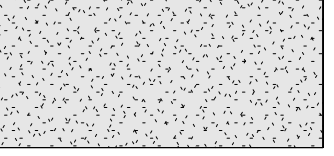
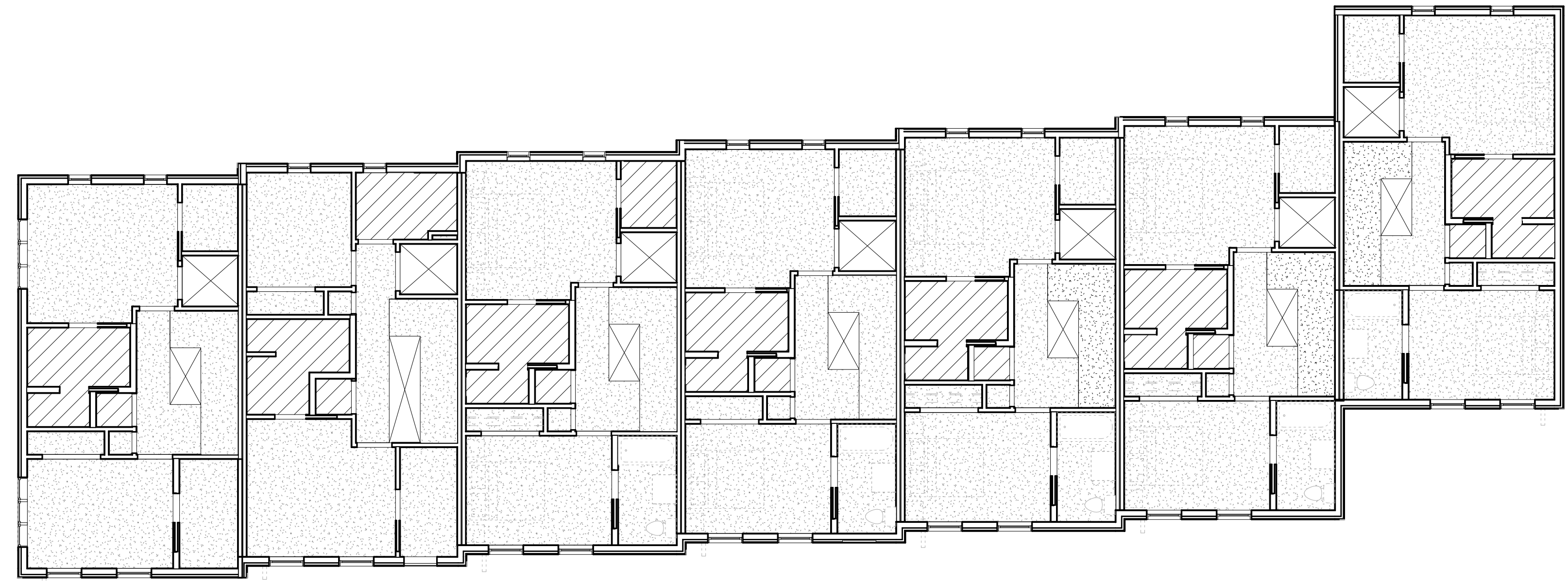


2 | 4TH FLOOR
1/8" = 1'-0"

REFLECTED CEILING PLAN NOTES:

	SOFFIT ABOVE CABINETS - GYP ON LIGHT GAUGE METAL FRAMING. 7'-1" AFF. TYP., 1'-1" WIDE TYP.		GYP CEILING - FIXED TO STRUCTURE ABOVE		BEADBOARD - FIXED TO STRUCTURE ABOVE
	SOFFIT - GYP ON LIGHT GAUGE METAL FRAMING - SEE PLAN FOR CEILING HEIGHT 4'-0" WIDE, MIN. U.N.O.		2 LAYERS 5/8" GYP CEILING - FIXED TO STRUCTURE ABOVE		



1 | 3RD FLOOR
1/8" = 1'-0"

Prepared For:

Bramhall Row, LLC
47 Waites Landing Road
Fairmouth, ME 04105

Consultant:

ARCHETYPE architects
48 Union Wharf Portland, Maine 04101
(207) 772-6022 ARCHETYPE@ARCHETYPEPA.COM

Architect:

Project:

BRAMHALL ROW
749 CONGRESS ST
PORTLAND, MAINE

Revisions:

Scale: 1/8" = 1'-0"

Date: 21 NOV 2016

REFLECTED CEILING PLANS

A7.02