

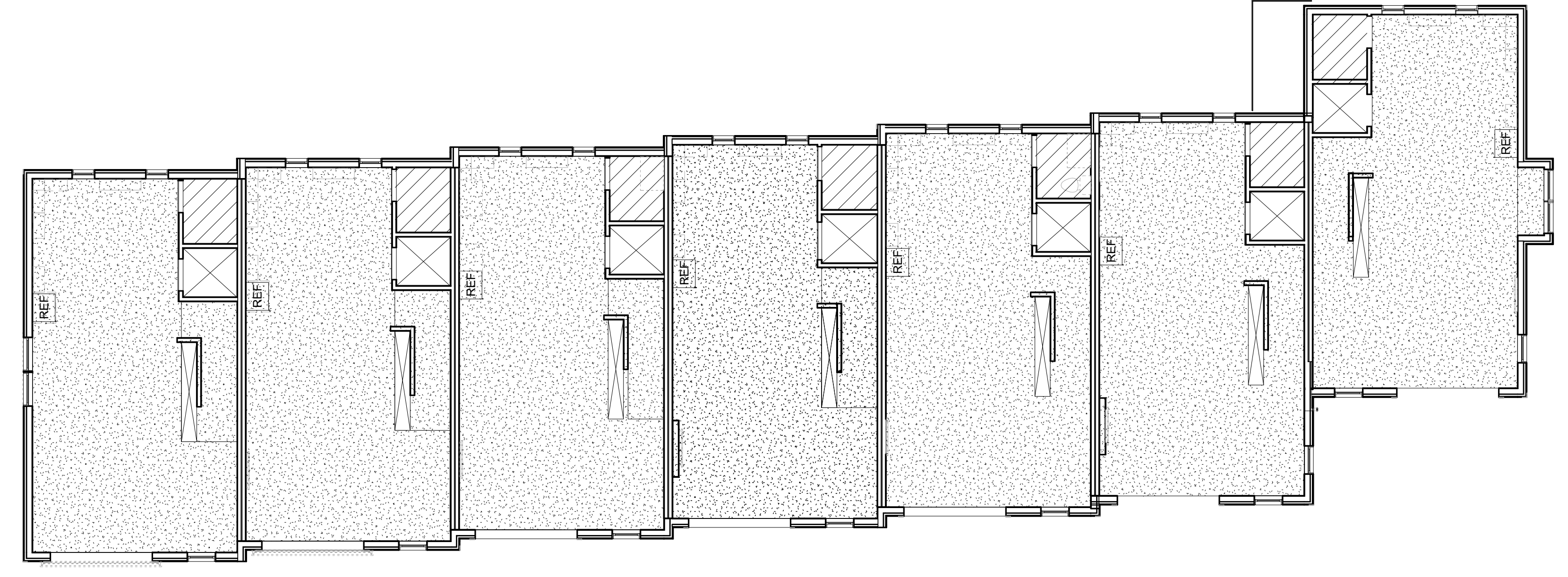
Prepared For:  
**Bramhall Row,  
LLC**

Consultant:  
**ARCHETYPE  
architects**  
48 Union Wharf Portland, Maine 04101  
(207) 772-6022 ARCHETYPE@ARCHETYPEPA.COM

Project:  
**BRAMHALL ROW**  
749 CONGRESS ST  
PORTLAND, MAINE

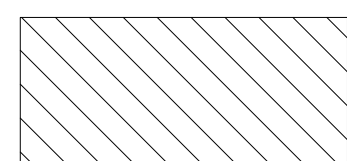
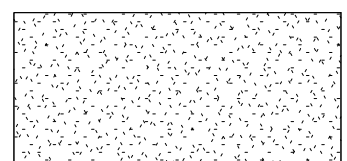

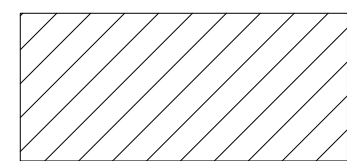
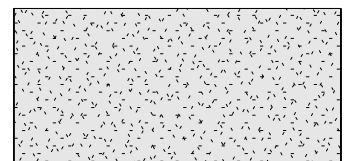
Revisions:  
Date: 21 NOV 2016  
Scale: 1/8" = 1'-0"  
**REFLECTED CEILING  
PLANS**

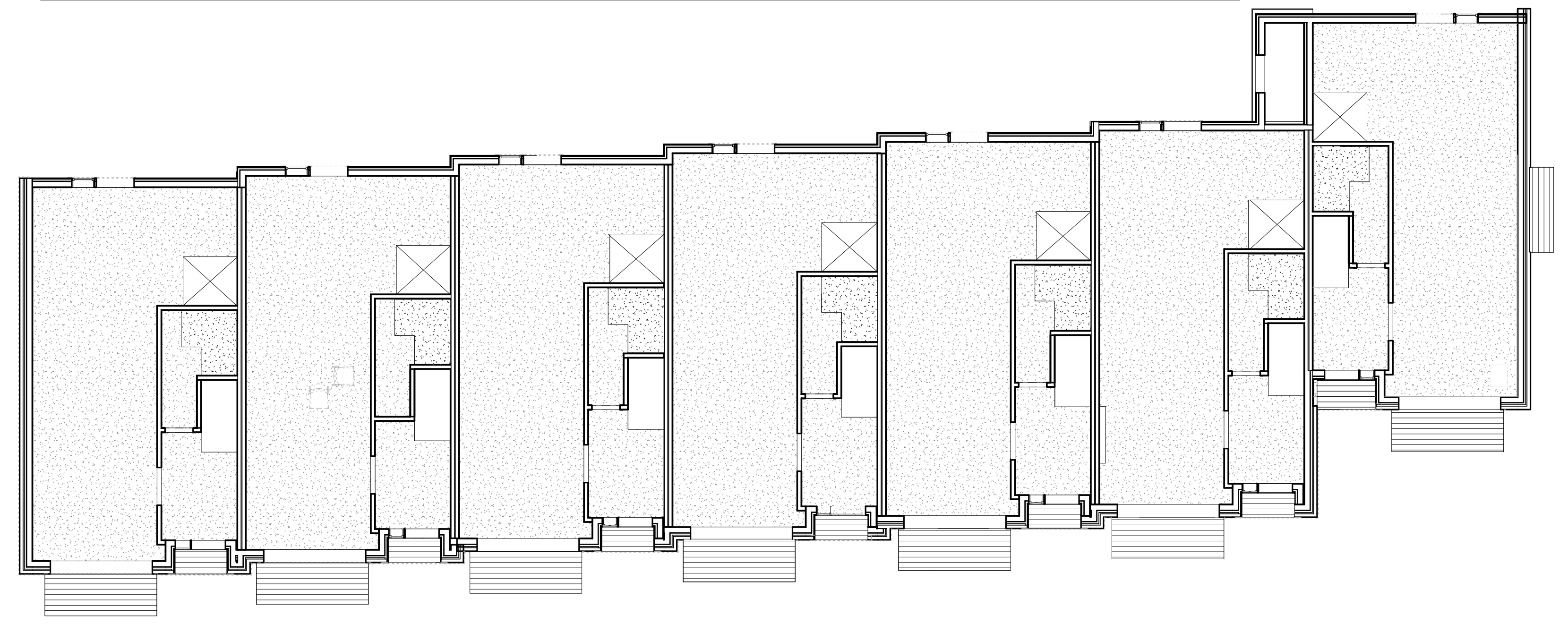
**A7.01**



**2 | 2ND FLOOR**  
1/8" = 1'-0"

REFLECTED CEILING PLAN NOTES:

	SOFFIT ABOVE CABINETS - GYP ON LIGHT GAUGE METAL FRAMING. 7'-1" AFF. TYP., 1'-1" WIDE TYP.		GYP CEILING - FIXED TO STRUCTURE ABOVE		BEADBOARD - FIXED TO STRUCTURE ABOVE
	SOFFIT - GYP ON LIGHT GAUGE METAL FRAMING - SEE PLAN FOR CEILING HEIGHT 4'-0" WIDE, MIN. U.N.O.		2 LAYERS 5/8" GYP CEILING - FIXED TO STRUCTURE ABOVE		



**1 | 1ST FLOOR**  
1/8" = 1'-0"