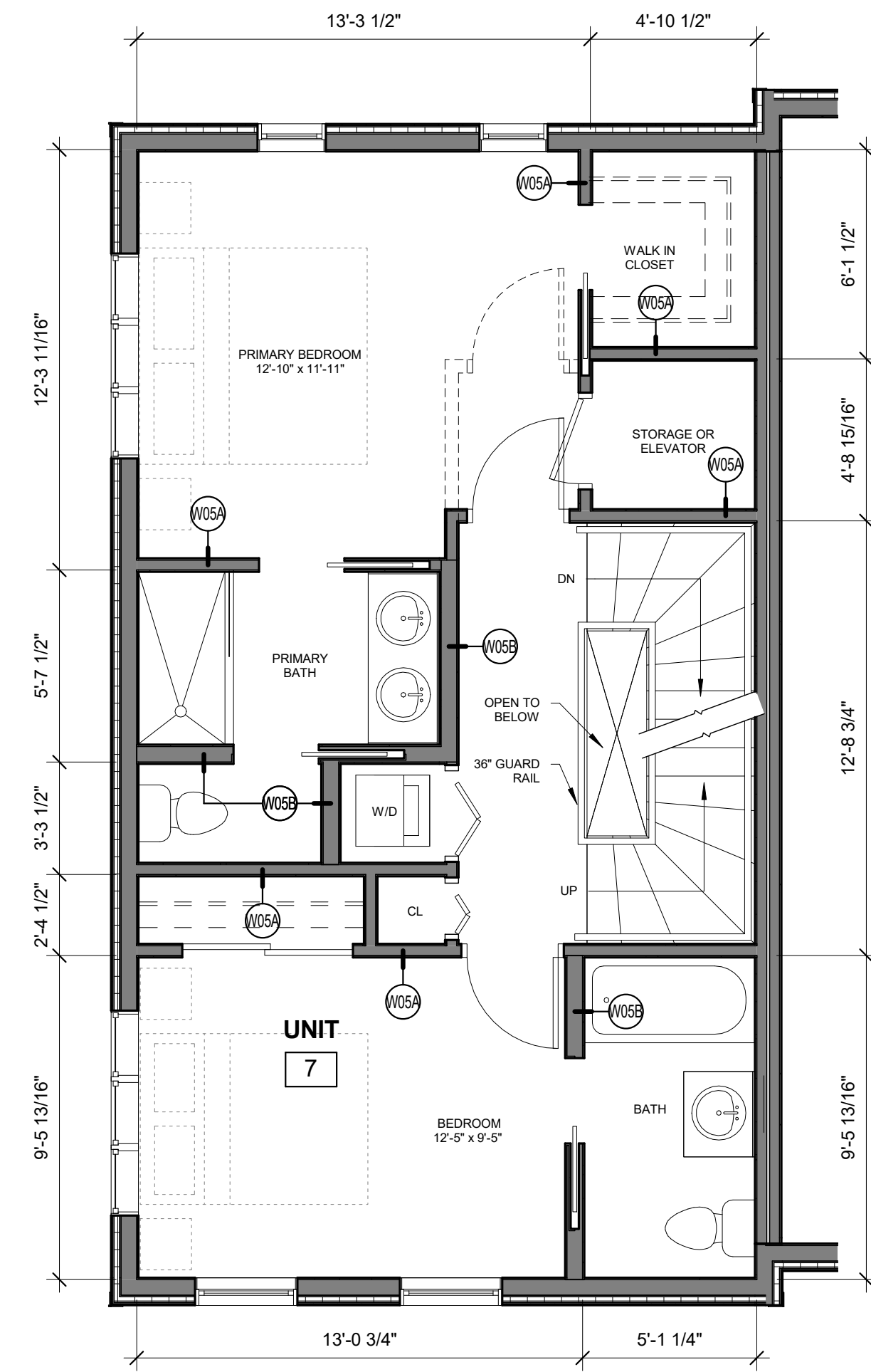
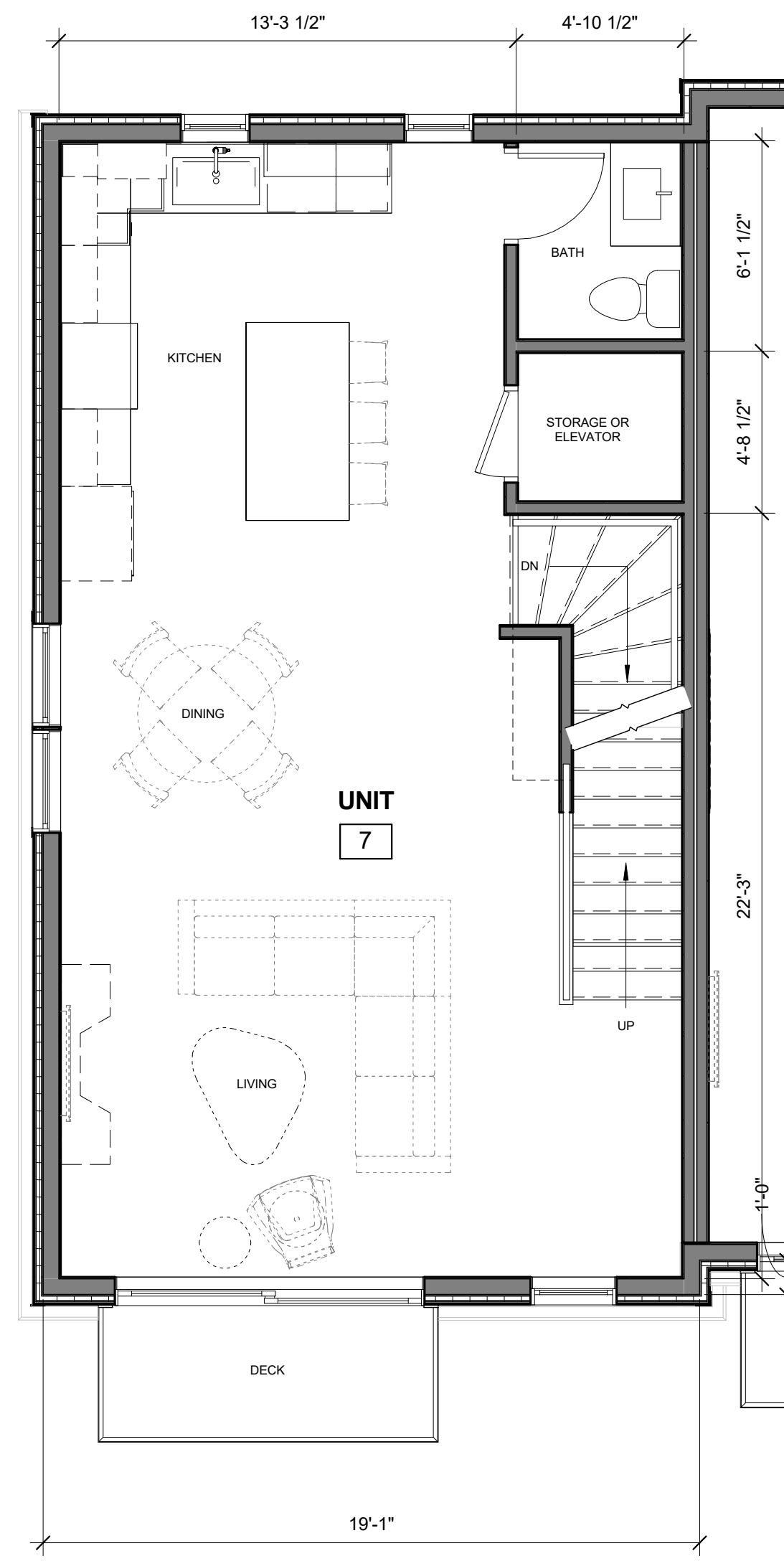


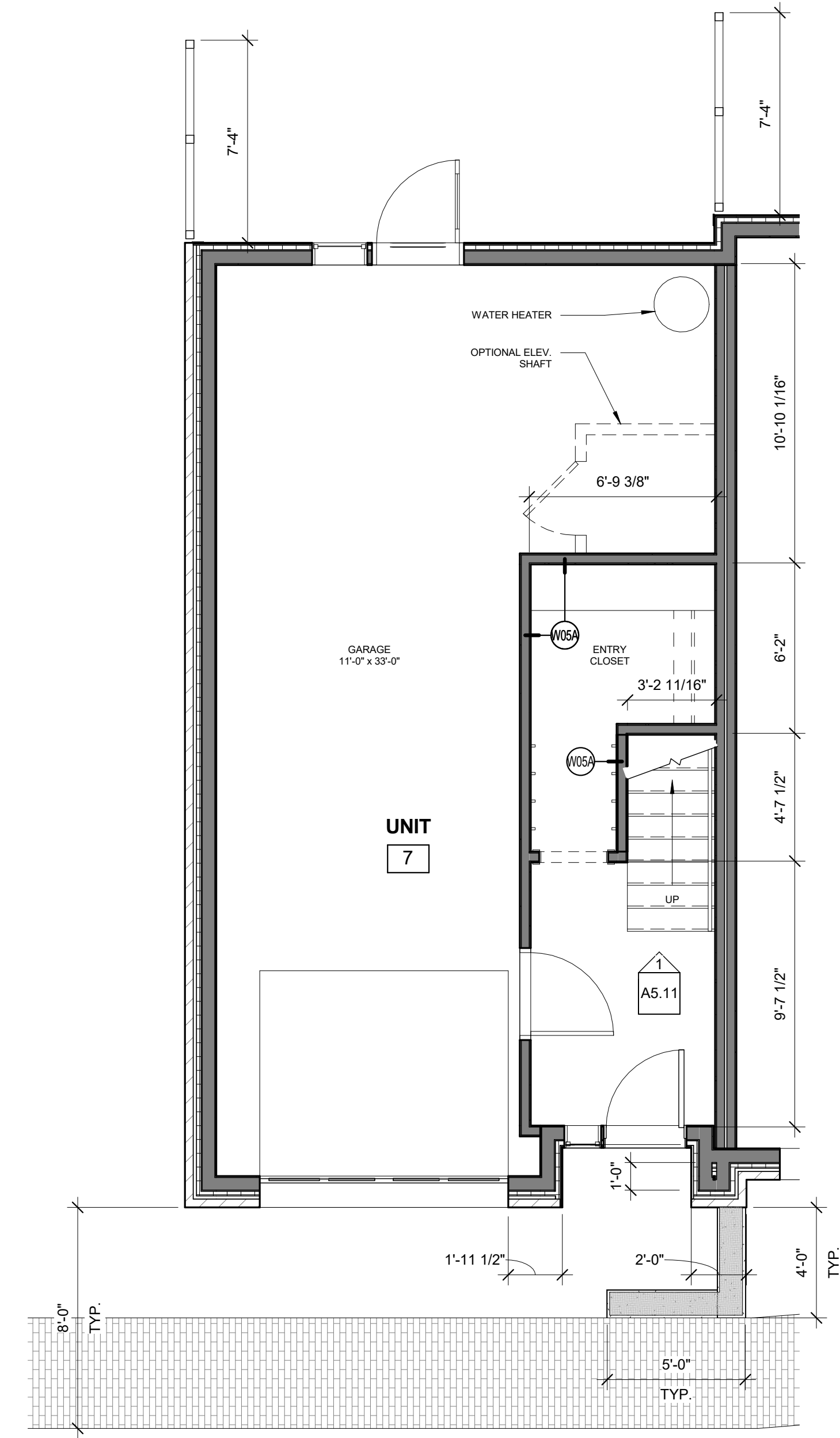
4 | 4TH FLOOR UNIT 7 TYPE A  
1/4" = 1'-0"



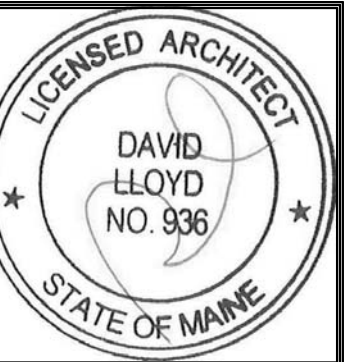
3 | 3RD FLOOR UNIT 7 TYPE A  
1/4" = 1'-0"



2 | 2ND FLOOR UNIT 7  
1/4" = 1'-0"



1 | 1ST FLOOR UNIT 7  
1/4" = 1'-0"



Prepared For:  
**Bramhall Row,  
LLC**

Consultant:

**ARCHETYPE**  
architects  
48 Union Wharf Portland, Maine 04101  
(207) 772-6022 ARCHETYPE@ARCHETYPEPA.COM

Project:  
**BRAMHALL ROW**

749 CONGRESS ST  
PORTLAND, MAINE

Revisions:

Date: 21 NOV 2016  
Scale: 1/4" = 1'-0"  
**ENLARGED UNIT 7  
PLANS**

**A6.07**