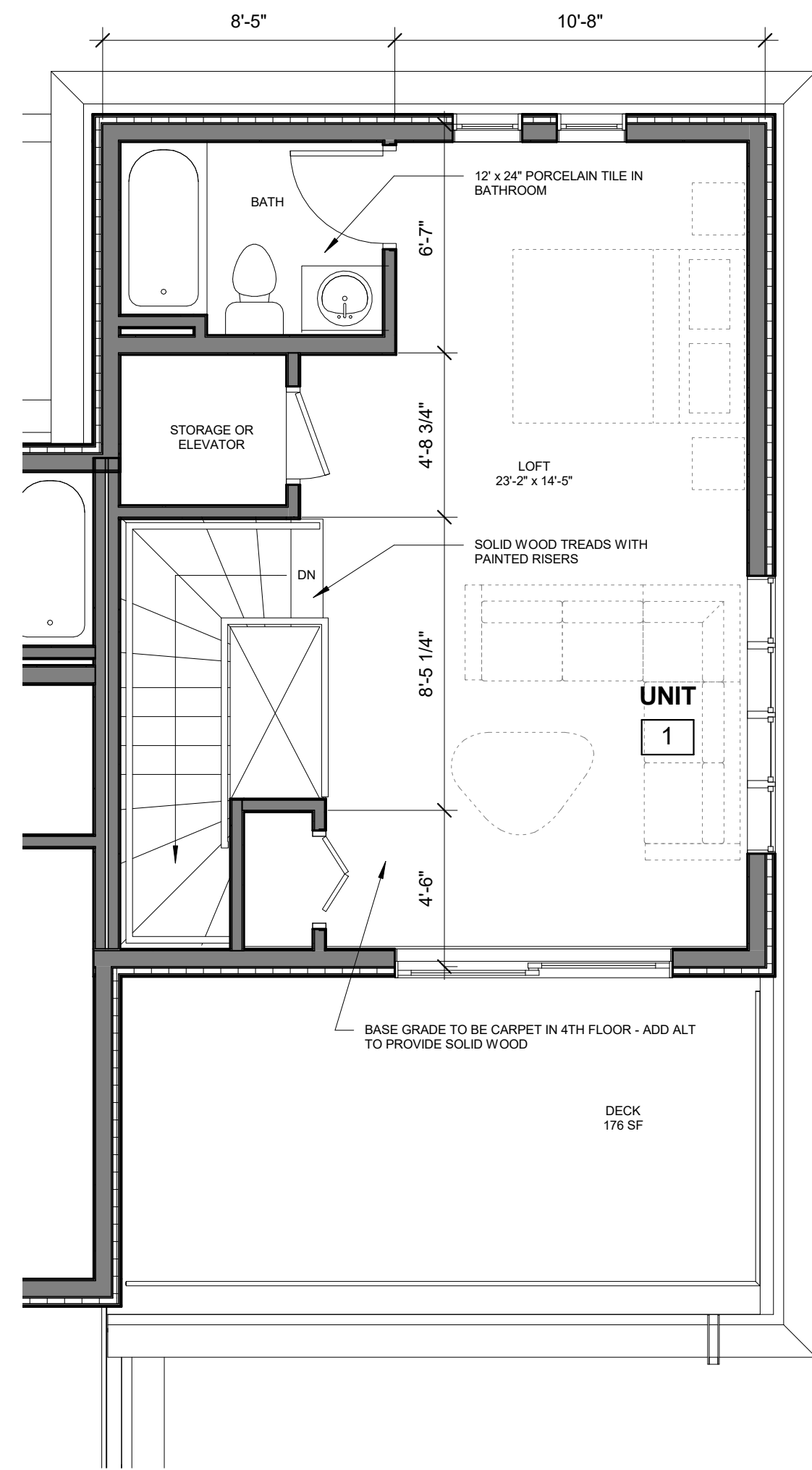
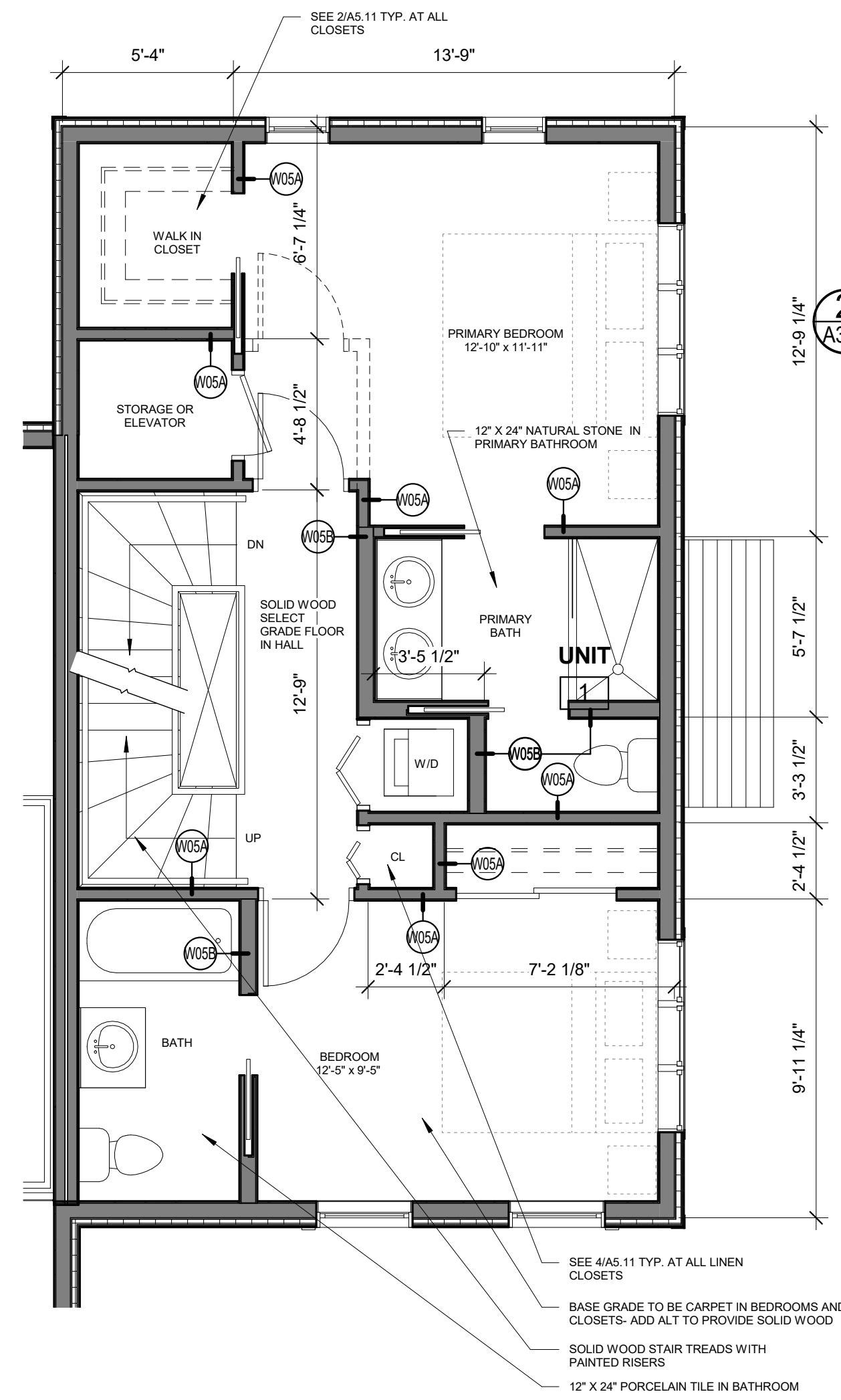


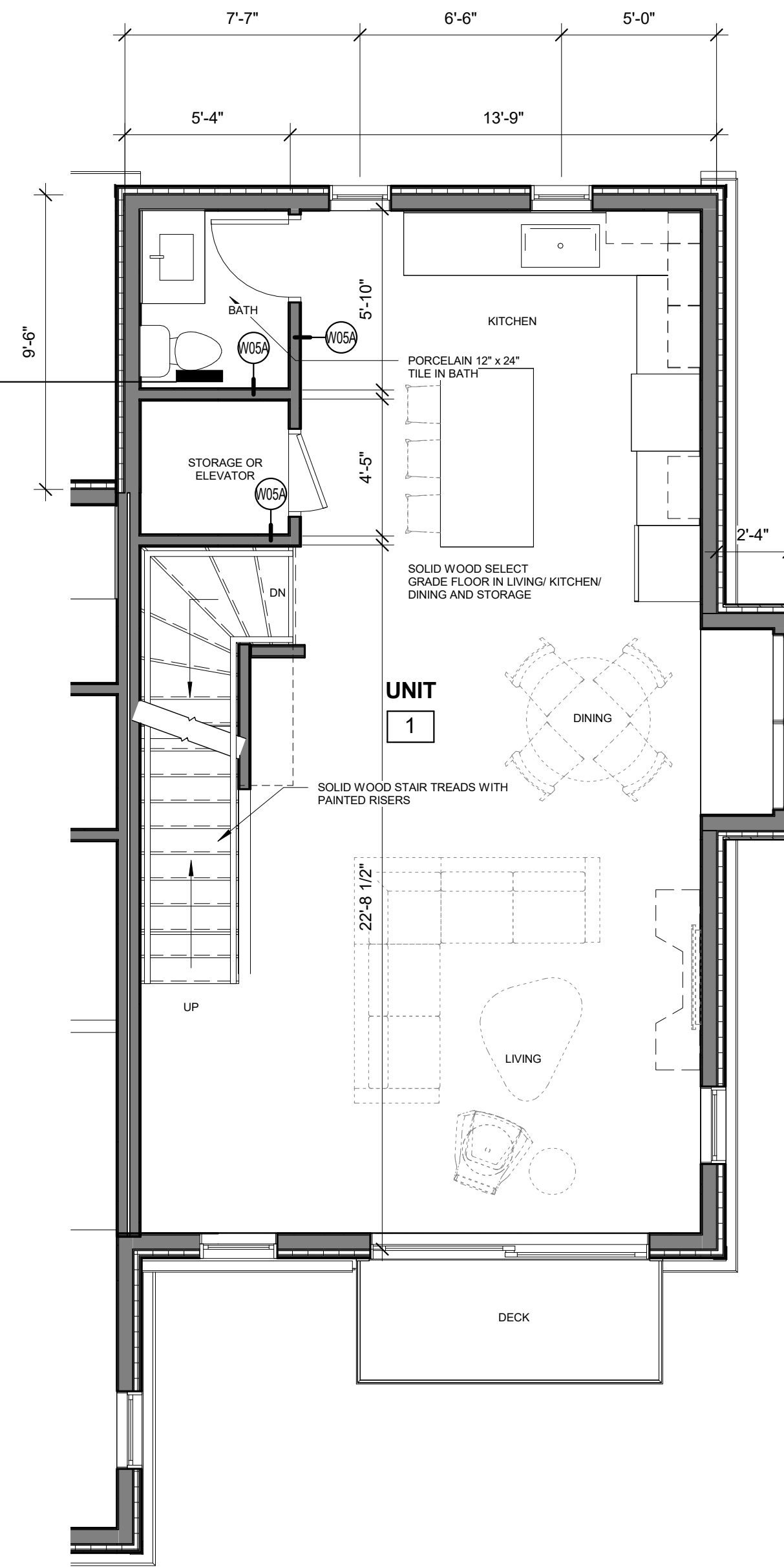
NOTES:  
 FLOORING INDICATED HERE ARE TYPICAL FOR ALL UNITS  
 THROUGHOUT-PROVIDE 1x6 PAINTED WOOD BASE  
 DOOR TRIM- 1 x 4 PAINTED WOOD  
 ALL STAIRS TO HAVE SOLID WOOD TREADS AND PAINTED  
 RISERS



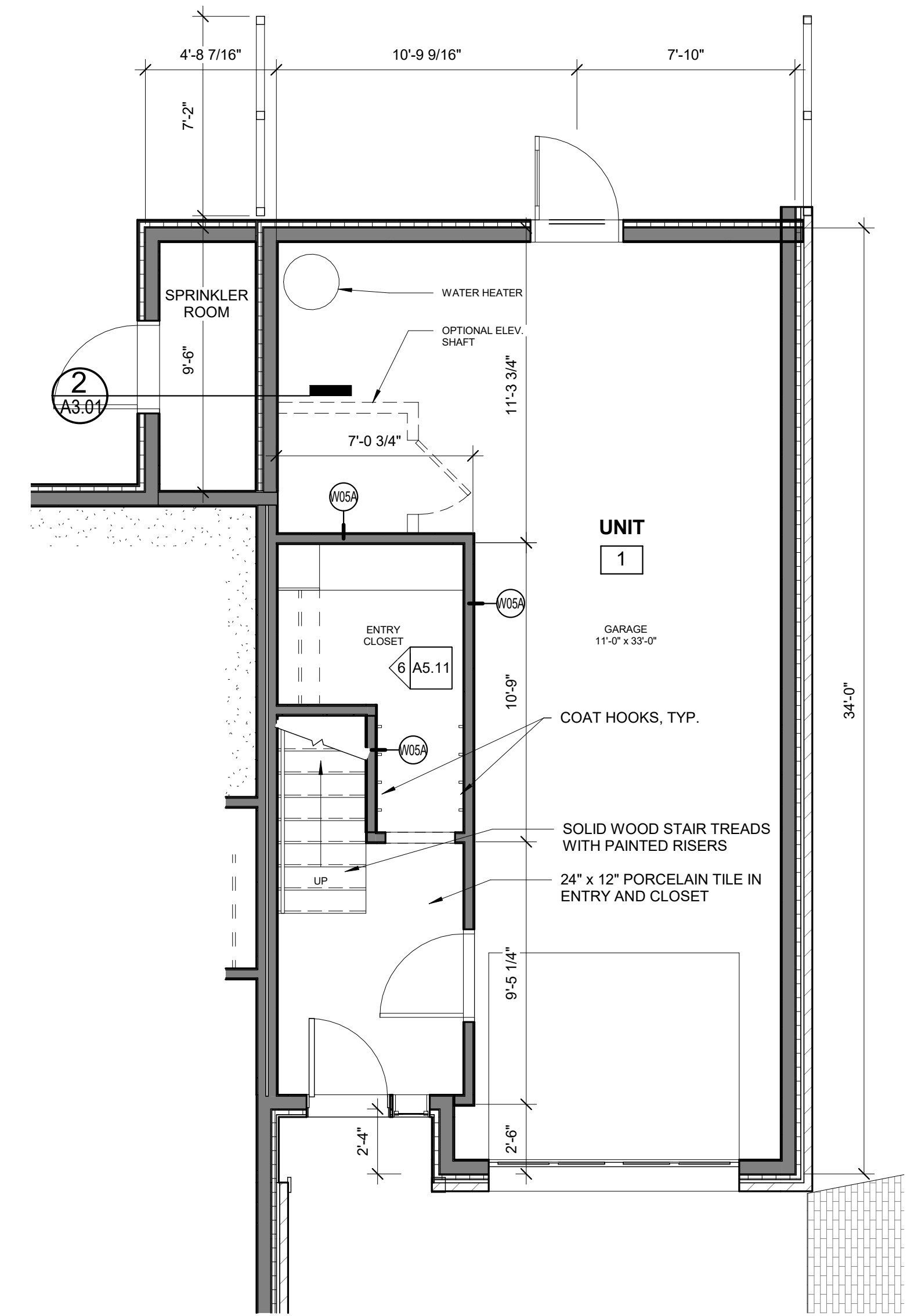
4 | 4TH FLOOR UNIT 1 TYPE A  
 1/4" = 1'-0"



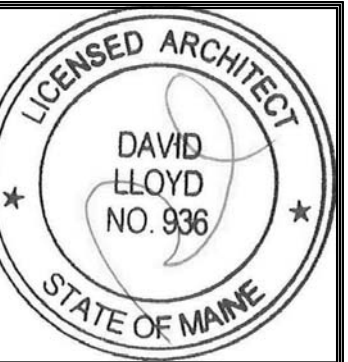
3 | 3RD FLOOR UNIT 1 TYPE A  
 1/4" = 1'-0"



2 | 2ND FLOOR UNIT 1  
 1/4" = 1'-0"



1 | 1ST FLOOR UNIT 1  
 1/4" = 1'-0"



Prepared For:  
**Bramhall Row,  
 LLC**

Consultant:

Architect:  
**ARCHETYPE  
 architects**  
 48 Union Wharf Portland, Maine 04101  
 (207) 772-6022 ARCHETYPE@ARCHETYPEPA.COM

Project:  
**BRAMHALL ROW**  
 749 CONGRESS ST  
 PORTLAND, MAINE

Revisions:

Date:  
 21 NOV 2016  
 Scale:  
 1/4" = 1'-0"  
**ENLARGED UNIT 1  
 PLANS**

**A6.01**