

Prepared For:
**Bramhall Row,
 LLC**

Consultant:

Architect:
ARCHETYPE
 architects
 48 Union Wharf Portland, Maine 04101
 (207) 772-6022 ARCHETYPE@ARCHETYPE.COM

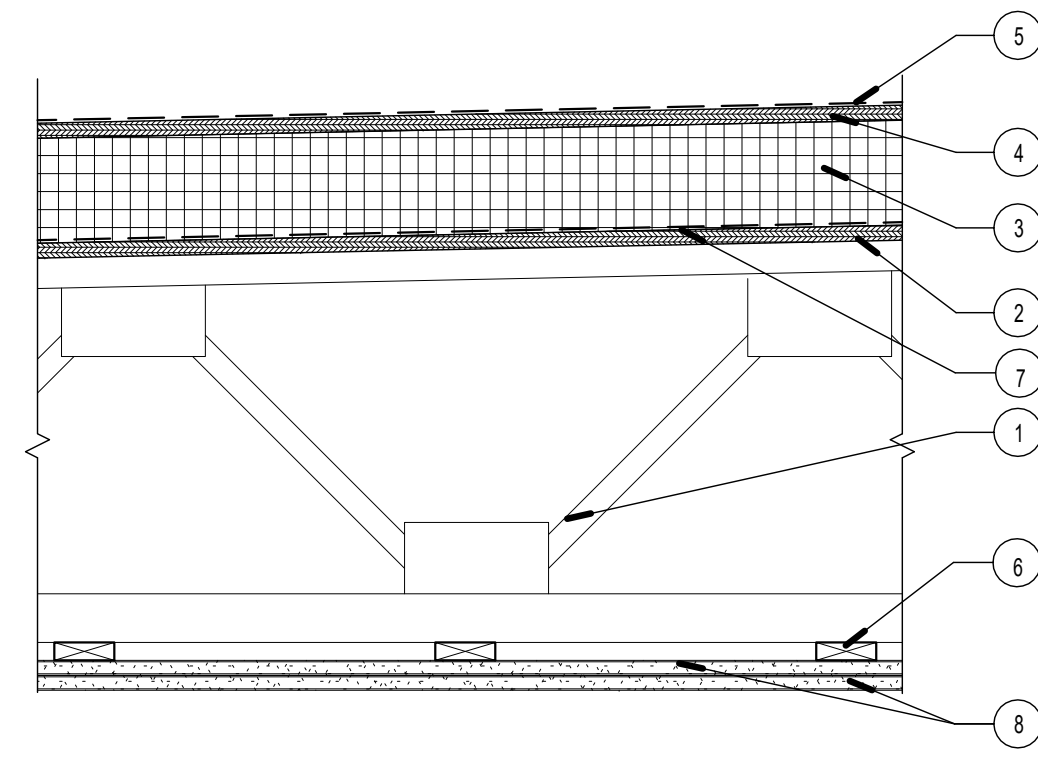
Project:
BRAMHALL ROW

Revisions:

Date:
 21 NOV 2016
 Scale:
 1 1/2" = 1'-0"

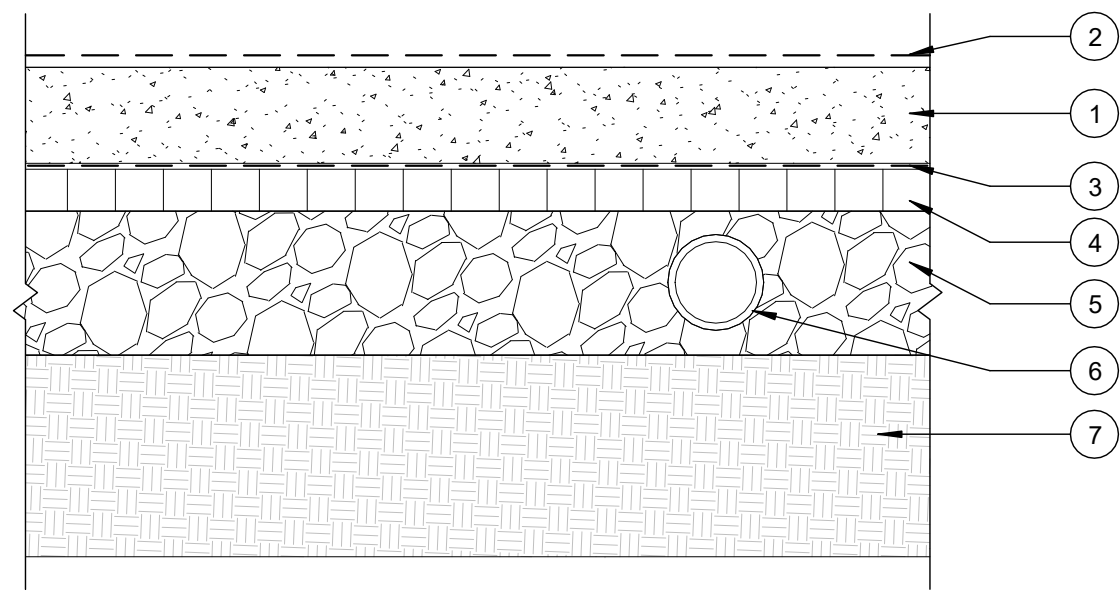
**FLOOR, CEILING &
 ROOF TYPES**

A4.01



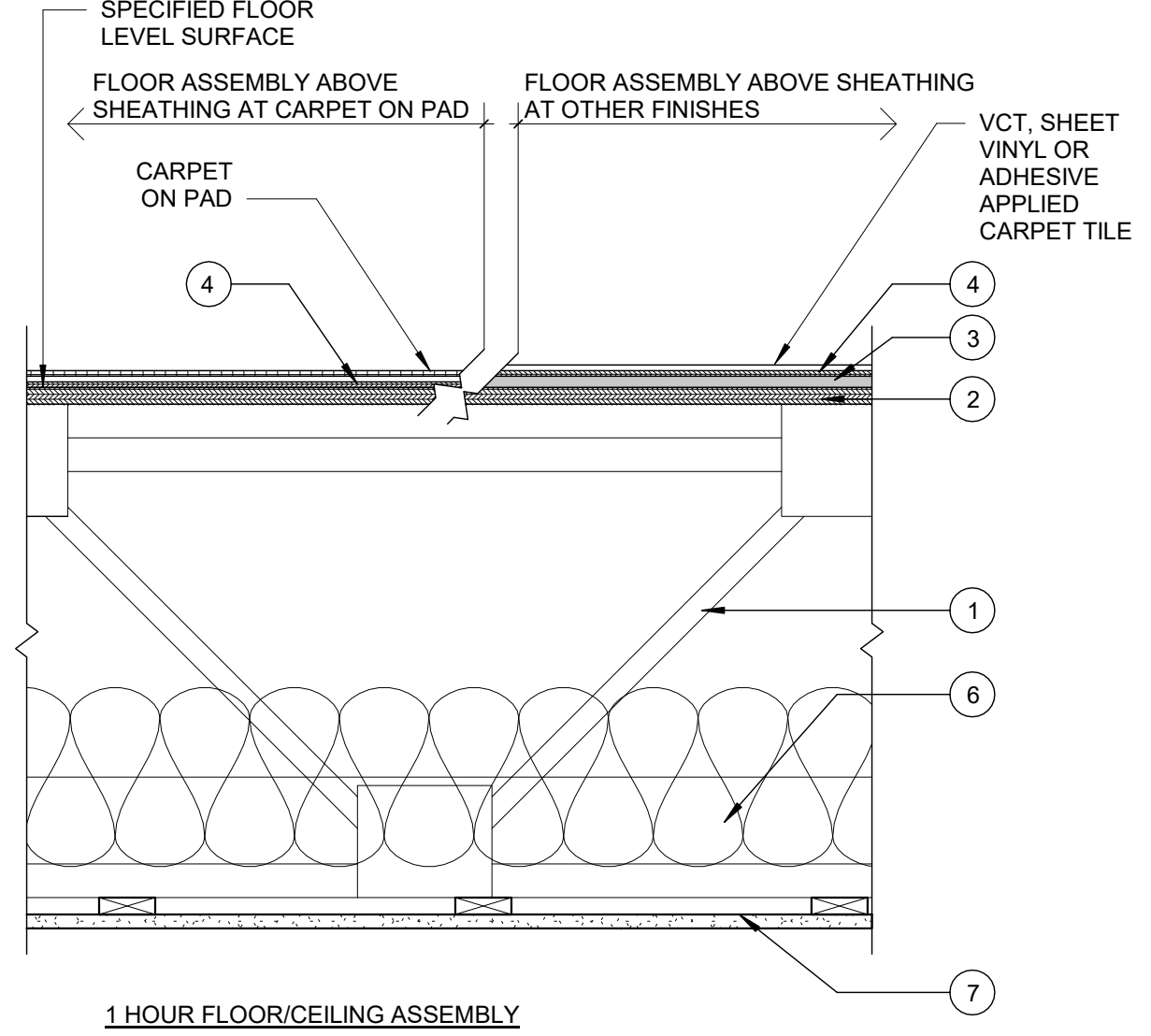
- R1 LABEL 1 HR**
 1 HOUR RATED ROOF ASSEMBLY
 GA FILE NO. FC 5522
 FIRE TEST: NRCC A-4440.1 (REVISED) 6.24.97
 R-30
1. **ROOF JOISTS** - SLOPED TRUSSES. (SEE STRUCTURAL)
 2. **ROOF SHEATHING** - 5/8" OSB SHEATHING. ATTACH TO STRUCTURE WITH 1 1/4" HOT DIPPED MECHANICAL FASTENERS 16" O.C.
 3. **RIGID INSULATION** - RIGID INSULATION, R30 MIN (ADDED)
 4. **SHEATHING** - 5/8" OSB SHEATHING
 5. **ROOFING** - EPDM MEMBRANE ROOFING (ADDED)
 6. **WOOD STRAPPING** - 1X3 WOOD STRAPPING @ 24" O.C. RUNNIGN PERP. TO TRUSSES
 7. **VAPOR BARRIER** - 10 MIL POLY VAPOR BARRIER OVER ROOF DECK. TAPE ALL SEAMS.
 8. **GYPSUM SHEATHING - 2 LAYERS** 5/8" TYPE X GYPSUM WALLBOARD, BASE LAYER APPLIED AT RIGHT ANGLES TO RESILIENT CHANNELS 16" OC WITH 1 1/4" TYPE S DRYWALL SCREWS 12 IN O.C. FACE LAYER APPLIED AT RIGHT ANGLES TO CHANNELS WITH 1 5/8" TYPE S DRYWALL SCREWS 12" OC. EDGE JOINTS OFFSET 24" FROM FROM BASE LAYER EDGE JOINTS.

2 | R1 - 1-HR RATED ROOF ASSEMBLY
 1 1/2" = 1'-0"



- FLOOR SYSTEM - SLAB ON GRADE**
1. **FINISH FLOOR** - NOT SHOWN. SEE FINISH SCHEDULE.
 2. **CONCRETE SLAB** - SEE STRUCTURAL FOR STRENGTH, THICKNESS AND REINFORCEMENT SPECIFICATIONS
 3. **VAPOR BARRIER** - POLYETHYLENE VAPOR BARRIER SHEET WITH SEAMS OVERLAPPED AND TAPED - SEE SPECIFICATIONS
 4. **RIGID INSULATION** - 1" 30 PSI EXTRUDED POLYSTYRENE - R-10 - CONTINUOUS UNDER ENTIRE SLAB
 5. **6" COARSE AGGREGATE**
 6. **4" PERFORATED PVC RADON PIPE** - SEE PLUMBING PLANS FOR ADDITIONAL INFORMATION
 7. **COMPACTED STRUCTURAL FILL** COMPACTED TO 95% OF DRY DENSITY - SEE STRUCTURALS FOR DEPTH AND GRADATION

3 | FLOOR TYPE F2 - SLAB ON GRADE
 1 1/2" = 1'-0"



- LABEL 1 HR**
- FLOOR SYSTEM - 1 HOUR**
 U.L. Design No L528
 (STC 54 - IIC 51) F.H.A. - Materials Release No. 930e & 1150d ICBO - Report No. 1016 ICC-ES File No. 04-02-05
1. **TRUSSES** - PARALLEL CHORD TRUSSES, SPACED A MAX OF 4 IN. OC (SEE STRUCTURALS), FABRICATED FROM NOM 2 BY 4 LUMBER, WITH LUMBER ORIENTED VERTICALLY OR HORIZONTALLY. MIN TRUSS DEPTH IS 12 IN. TRUSS MEMBERS SECURED TOGETHER WITH MIN 0.0356 IN. THICK GALV STEEL PLATES. PLATES HAVE 5/16 IN. LONG TEETH PROJECTING PERPENDICULAR TO THE PLANE OF THE PLATE. THE TEETH ARE IN PAIRS FACING EACH OTHER (MADE BY THE SAME PUNCH), FORMING A SPLIT TOOTH TYPE PLATE. EACH TOOTH HAS A CHISEL POINT ON ITS OUTSIDE EDGE. THESE POINTS ARE DIAGONALLY OPPOSITE EACH OTHER FOR EACH PAIR. THE TOP HALF OF EACH TOOTH HAS A TWIST FOR STIFFNESS. THE PAIRS ARE REPEATED ON APPROX. 7/8 IN. CENTERS WITH FOUR ROWS OF TEETH PER INCH OF PLATE WIDTH.
 2. **SUBFLOORING** - NOM 23/32 IN. THICK WOOD STRUCTURAL PANELS INSTALLED PERPENDICULAR TO TRUSSES WITH END JOINTS STAGGERED. PLYWOOD OR PANELS SECURED TO TRUSSES WITH CONSTRUCTION ADHESIVE AND NO. 6D RINGED SHANK NAILS, SPACED 12 IN. OC ALONG EACH TRUSS. STAPLES HAVING EQUAL OR GREATER WITHDRAWAL AND LATERAL RESISTANCE STRENGTH MAY BE SUBSTITUTED FOR THE 6D NAILS.
 3. **FLOORING SOUND BARRIER** - 1/2" HOMASOTE 440 SOUND BARRIER.
 4. **FINISH FLOOR UNDERLAYMENT** - 1/4" PLYWOOD UNDERLAYMENT ORIENTED PERPENDICULAR TO SUBFLOORING.
 5. -
 6. **BATTS AND BLANKETS** - 8" GLASS FIBER OR MINERAL WOOL INSULATION BEARING THE UL CLASSIFICATION MARKING AS TO SURFACE BURNING CHARACTERISTICS AND/OR FIRE RESISTANCE. WHEN THE RESILIENT CHANNELS ARE SPACED A MAX OF 12 IN. OC THERE IS NO LIMIT IN THE OVERALL THICKNESS OF INSULATION, AND THE INSULATION CAN BE SECURED AGAINST THE SUBFLOORING, HELD SUSPENDED IN THE CONCEALED SPACE OR DRAPED OVER THE RESILIENT OR FURRING CHANNELS AND GYPSUM PANEL MEMBRANE.
 7. **GYPSUM BOARD** - NOM 5/8 IN. THICK, 48 IN. WIDE GYPSUM PANELS. GYPSUM PANELS INSTALLED WITH LONG DIMENSION PERPENDICULAR TO RESILIENT CHANNELS. GYPSUM PANELS SECURED WITH MAX. 1 IN. LONG TYPE S BULGE HEAD STEEL SCREWS SPACED 12 IN. OC AND LOCATED A MIN OF 1/2 IN. FROM SIDE JOINTS AND 3 IN. FROM THE END JOINTS. END JOINTS SECURED TO BOTH RESILIENT CHANNELS AS SHOWN IN END JOINT DETAIL.

1 | FLOOR TYPE F1 - 1HR WOOD TRUSS FLOOR WITH GYP CEILING
 1 1/2" = 1'-0"