

Bramhall Row, LLC

Prepared For:

Consultant:

ARCHETYPE architects
48 Union Wharf Portland, Maine 04101
(207) 772-6022 ARCHETYPE@ARCHETYPEPA.COM

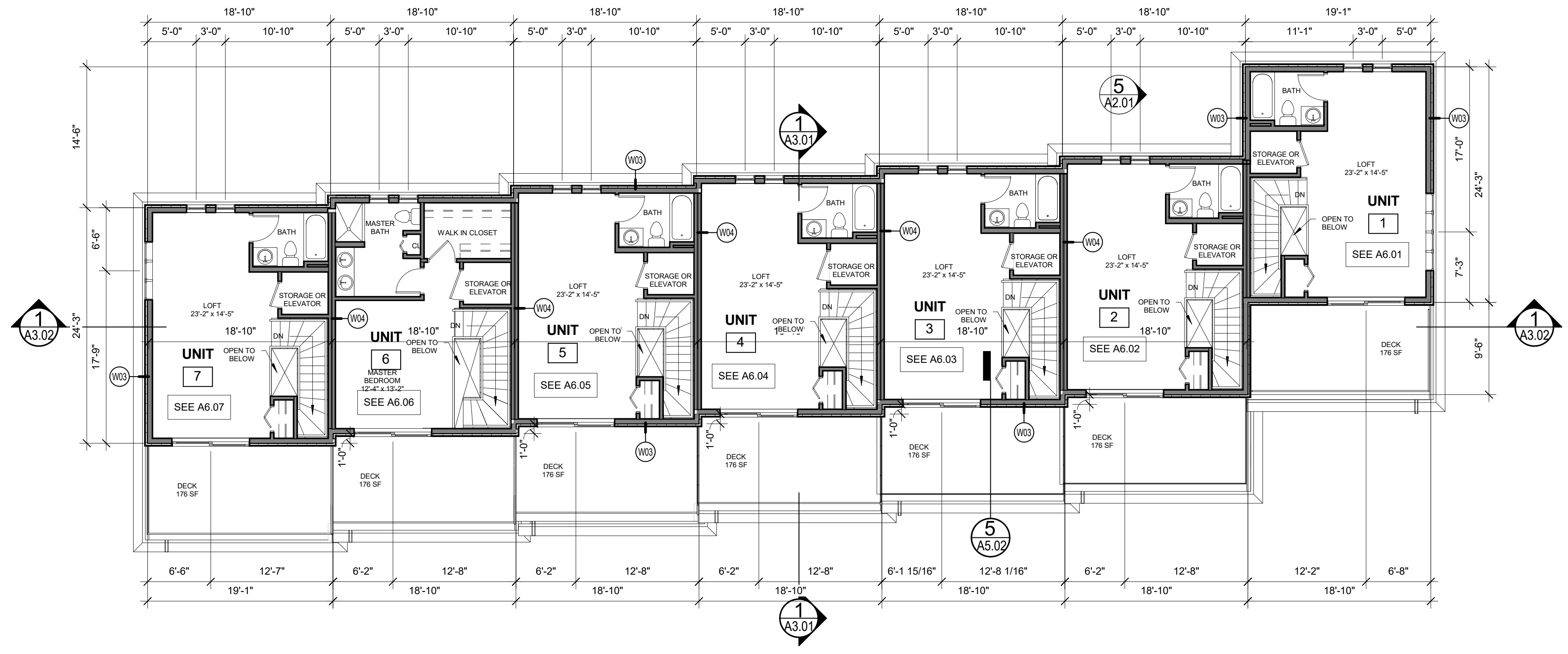
Architect:

Project: BRAMHALL ROW
749 CONGRESS ST
PORTLAND, MAINE

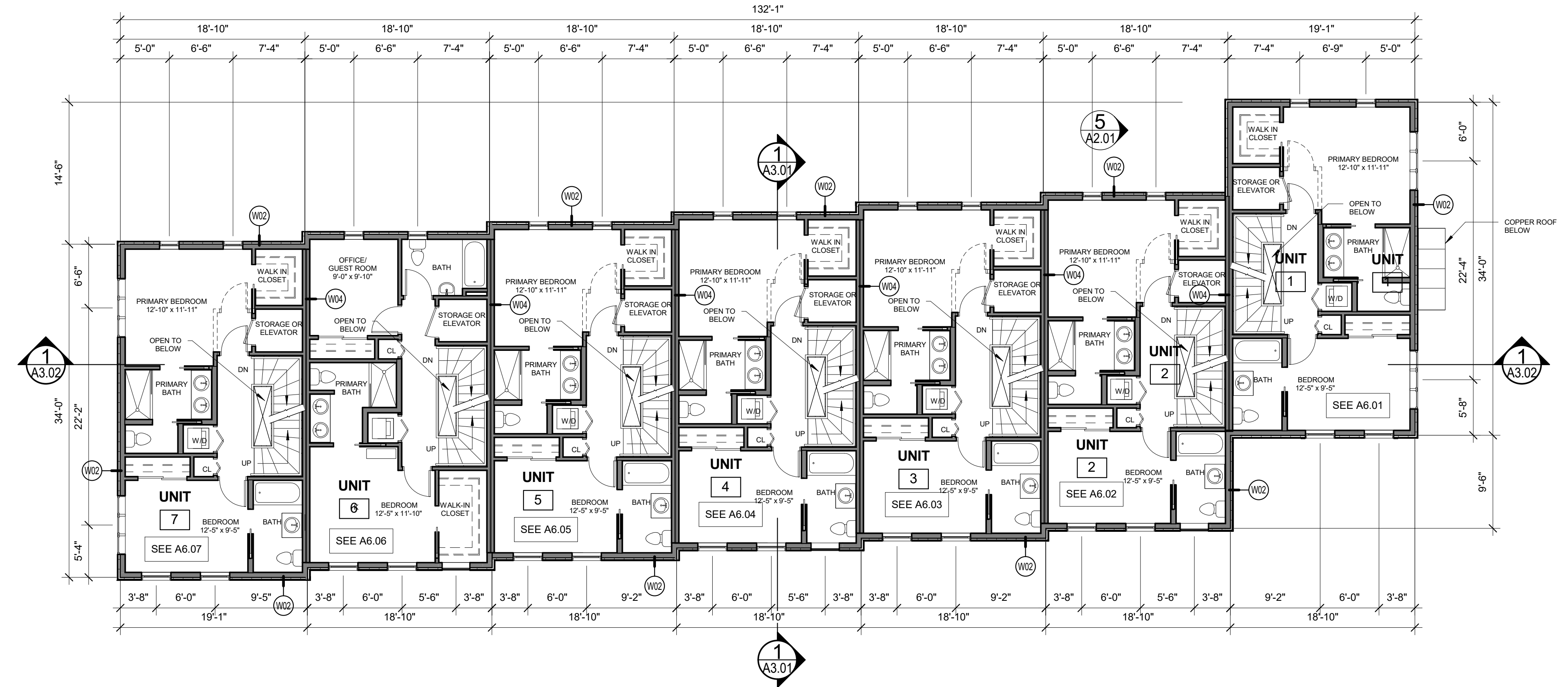
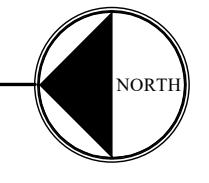
Revisions:

Date: 21 NOV 2016
Scale: 1/8" = 1'-0"
3RD AND 4TH FLOOR PLANS

A1.02



2 | 4TH FLOOR PLAN 3,300 SQ FT
1/8" = 1'-0"



1 | 3RD FLOOR PLAN 4,597 SQ FT
1/8" = 1'-0"

