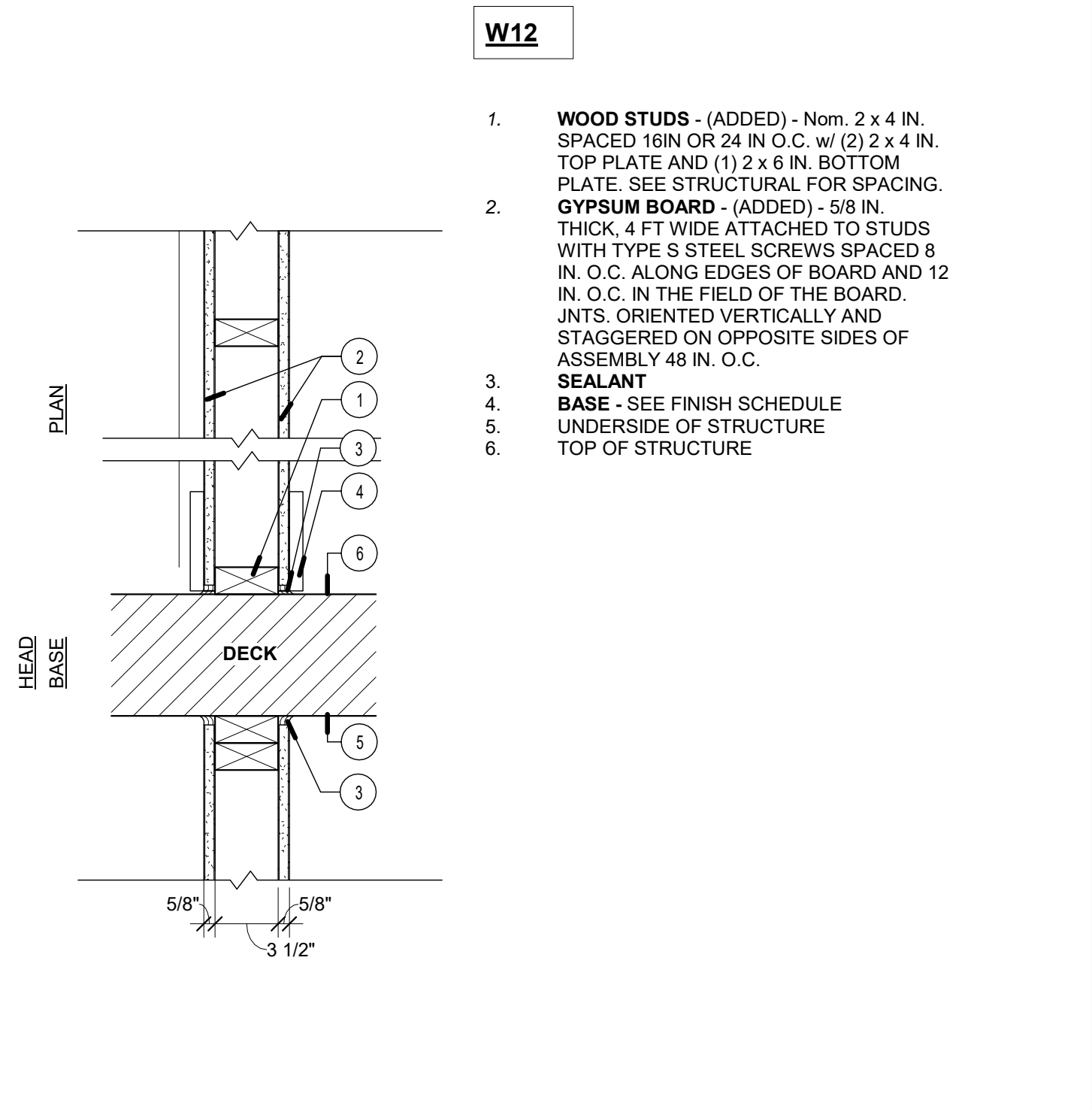


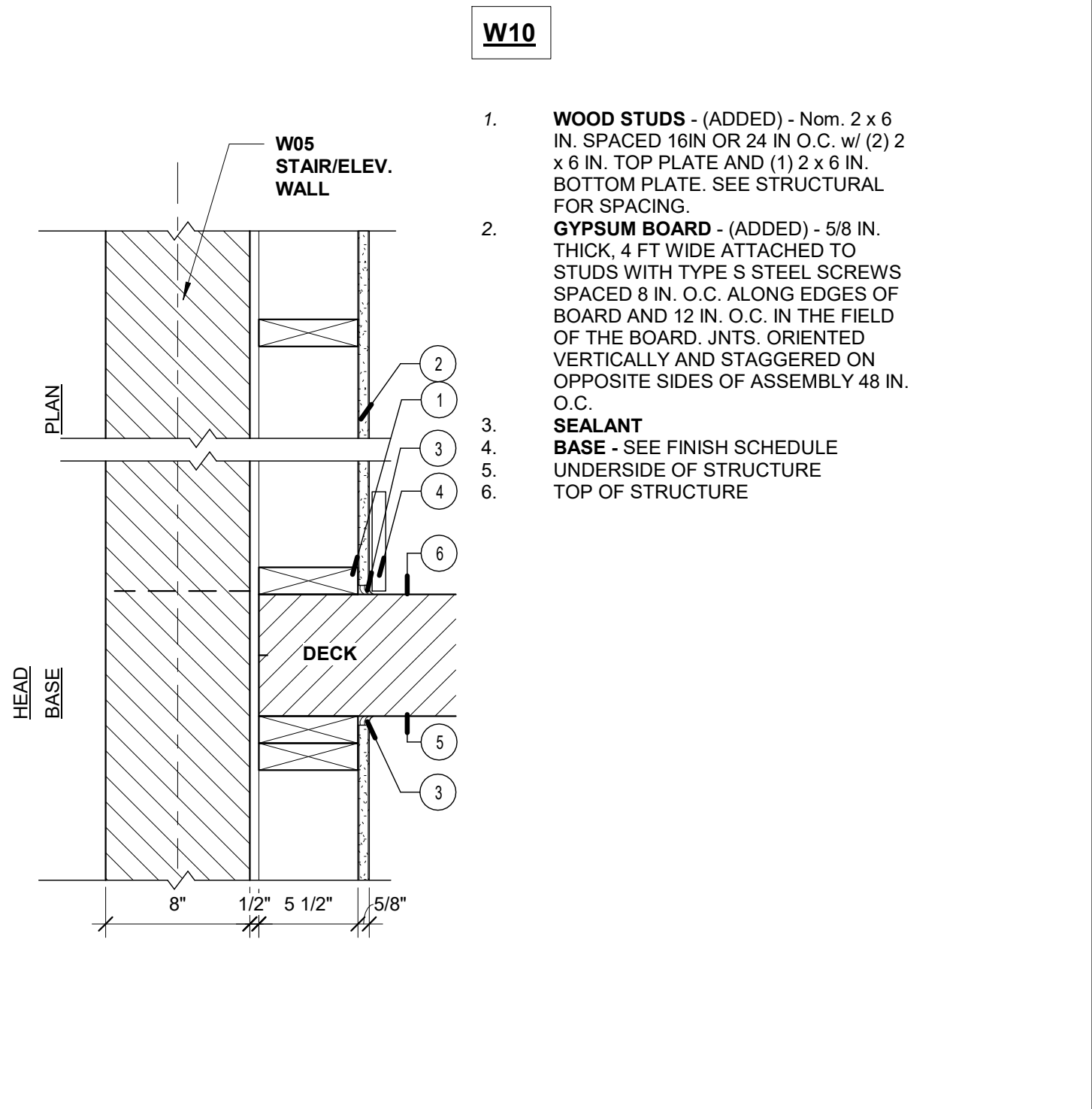
- W14** 1 HR LOAD BEARING FIRE BARRIER  
DESIGN NUMBER - UL U341 - 1 HOUR FIRE  
50-54 STC SOUND - RAL TL06-299, 8-10-06  
(THIS STC TEST PERFORMED WITH SOUND ATTENUATION BATT - THE SUBSTITUTION OF CELLULOSE MEETS OR EXCEEDS THIS STC RATING)
- WOOD STUDS - NOM 2 X 4 IN SPACED 24 IN. O.C. MAX. CROSS B RACED AT MID HEIGHT AND EFFECTIVELY FIRESTOPPED AT TOP AND BOTTOM OF WALL.
  - TYPE X GYP BOARD - 5/8 IN. THICK, 4 FT. WIDE, GYP BOARD PANELS WITH BEVELED, SQUARE OR TAPERED EDGES. APPLIED VERT. OR HORIZ. SINGLE LAYER INSTALLED ON ONE SIDE OF STL STUDS. VERTICAL JOINTS CENTERED OVER STUDS AND STAGGERED ONE STUD CAVITY ON OPPOSITE SIDES OF STUDS. HORIZ. EDGE JOINTS AND HORIZ. BUTT JOINTS NEED NOT BE BACKED BY FRAMING. HORIZ. EDGE JOINTS AND HORIZ. PANELS ATTACHED TO STL STUDS AND FL RUNNER WITH 1-1/4 IN. LONG TYPE S STL SCREWS SPACED 8 IN. O.C. WHEN APPLIED HORIZ. OR 8 IN. O.C. ALONG VERTICAL AND BOTTOM EDGES AND 12 IN. O.C. IN THE FIELD WHEN APPLIED VERT. WHEN USED IN WIDTH OTHER THAN 48 IN. GYP PANELS TO BE INSTALLED HORIZ. GYP HELD UP FROM FLOOR MIN 1/4" TO 3/8" FOR INSTALLATION OF ACOUSTIC SEALANT - TYPICAL.
  - CELLULOSE INSULATION - INSULATION IS APPLIED DRY AND DENSE-PACKED INTO ENTIRE CAVITY. GYPSUM BOARD PANELS ARE INSTALLED ON BOTH FACES OF THE WALL FIRST, WITH A GAP LEFT AT THE TOP OF EACH STUD BAY TO BE FILLED AFTER INSULATION IS IN PLACE. TESTING WILL BE PERFORMED TO ENSURE PROPER DENSITY AND THAT ENTIRE CAVITY IS FILLED, ESPECIALLY AROUND AND BELOW ELECTRICAL BOXES AND SWITCHES, ETC.
  - JOINT TAPE AND COMPOUND - (NOT SHOWN) VINYL, DRY OR PREMIXED JOINT COMPOUND, APPLIED TO JOINTS AND SCREW HEADS; PAPER TAPE, 2" WIDE, EMBEDDED IN FIRST LAYER OF COMPOUND OVER ALL JOINTS.
  - CAULKING AND SEALANTS - A BEAD OF ACOUSTICAL SEALANT APPLIED AROUND THE PARTITION PERIMETER FOR SOUND CONTROL, BOTH SIDES OF WALL.
  - SOUND CONTROL - (NOT SHOWN) - ALL J-BOXES INCLUDING SWITCHES AND OUTLETS SHALL BE SEALED WITH PUTTY PACKS IN SOUND-RATED WALLS WHICH USE FIBERGLASS BATT INSULATION. ALTERNATIVELY CONTRACTOR CAN ELECT TO USE LESSCO BOXES, WITH THE FRONT FLANGE SEALED TO GYP FACE WITH CAULK.
  - SCHEDULED BASE - SEE FINISH SCHEDULE
  - UNDERSIDE OF STRUCTURE
  - TOP OF STRUCTURE

**6** WALL 14 - DEMISING WALL  
1 1/2" = 1'-0"



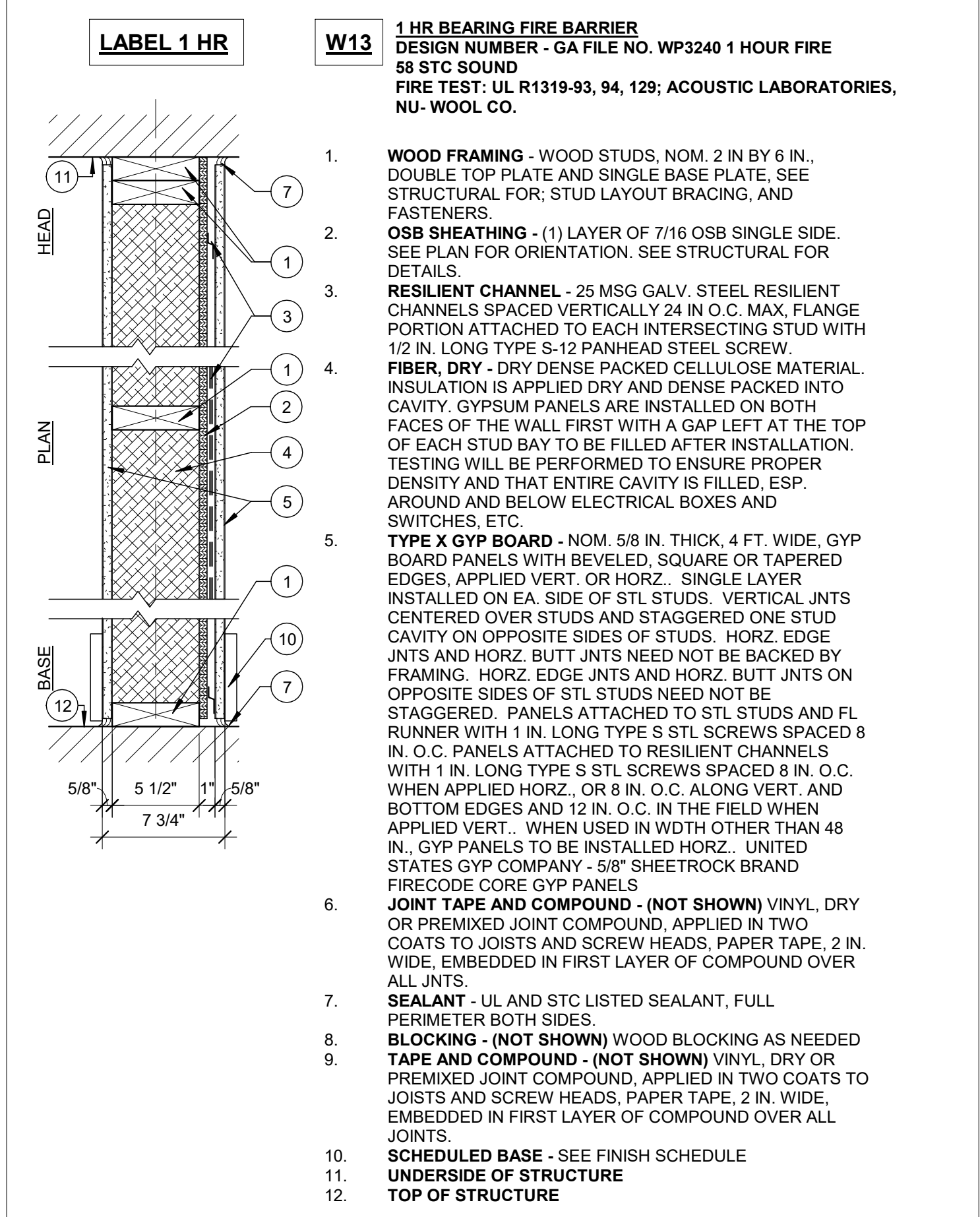
- W12**
- WOOD STUDS - (ADDED) - Nom. 2 x 4 IN. SPACED 16IN OR 24 IN O.C. w/ (2) 2 x 4 IN. TOP PLATE AND (1) 2 x 6 IN. BOTTOM PLATE. SEE STRUCTURAL FOR SPACING.
  - GYPSUM BOARD - (ADDED) - 5/8 IN. THICK, 4 FT WIDE ATTACHED TO STUDS WITH TYPE S STEEL SCREWS SPACED 8 IN. O.C. ALONG EDGES OF BOARD AND 12 IN. O.C. IN THE FIELD OF THE BOARD. JNTS. ORIENTED VERTICALLY AND STAGGERED ON OPPOSITE SIDES OF ASSEMBLY 48 IN. O.C.
  - SEALANT
  - BASE - SEE FINISH SCHEDULE
  - UNDERSIDE OF STRUCTURE
  - TOP OF STRUCTURE

**4** WALL 12- LOADBEARING UNIT WALL  
1 1/2" = 1'-0"



- W10**
- WOOD STUDS - (ADDED) - Nom. 2 x 6 IN. SPACED 16IN OR 24 IN O.C. w/ (2) 2 x 6 IN. TOP PLATE AND (1) 2 x 6 IN. BOTTOM PLATE. SEE STRUCTURAL FOR SPACING.
  - GYPSUM BOARD - (ADDED) - 5/8 IN. THICK, 4 FT WIDE ATTACHED TO STUDS WITH TYPE S STEEL SCREWS SPACED 8 IN. O.C. ALONG EDGES OF BOARD AND 12 IN. O.C. IN THE FIELD OF THE BOARD. JNTS. ORIENTED VERTICALLY AND STAGGERED ON OPPOSITE SIDES OF ASSEMBLY 48 IN. O.C.
  - SEALANT
  - BASE - SEE FINISH SCHEDULE
  - UNDERSIDE OF STRUCTURE
  - TOP OF STRUCTURE

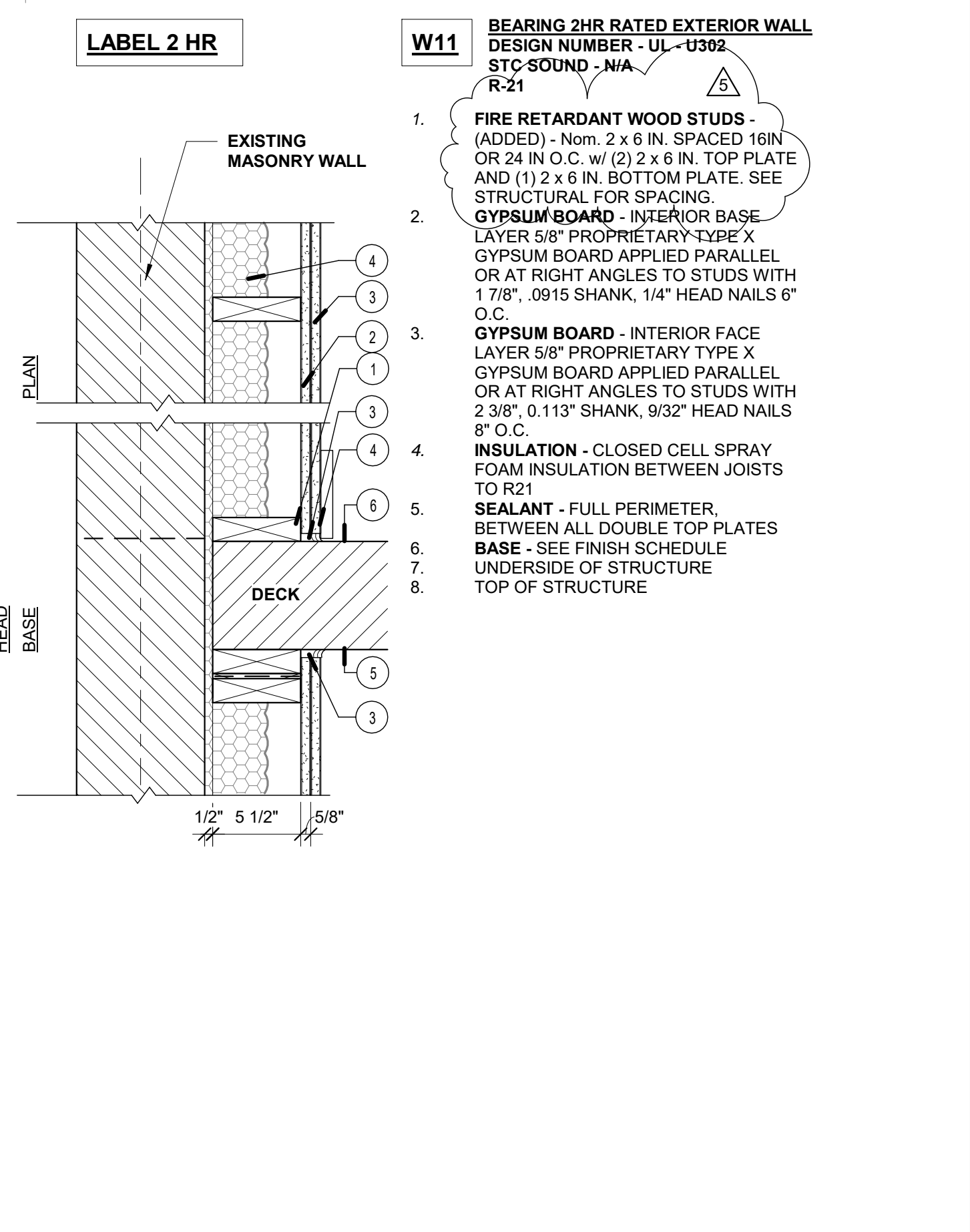
**2** WALL 10- 1 HR LOADBEARING WALL  
1 1/2" = 1'-0"



- W13** 1 HR BEARING FIRE BARRIER  
DESIGN NUMBER - GA FILE NO. WP3240 1 HOUR FIRE  
58 STC SOUND  
FIRE TEST: UL R1319-93, 94, 129; ACOUSTIC LABORATORIES, NU-WOOL CO.
- WOOD FRAMING - WOOD STUDS, NOM. 2 IN BY 6 IN., DOUBLE TOP PLATE AND SINGLE BASE PLATE, SEE STRUCTURAL FOR: STUD LAYOUT BRACING, AND FASTENERS.
  - OSB SHEATHING - (1) LAYER OF 7/16 OSB SINGLE SIDE. SEE PLAN FOR ORIENTATION. SEE STRUCTURAL FOR DETAILS.
  - RESILIENT CHANNEL - 25 MSG GALV. STEEL RESILIENT CHANNELS SPACED VERTICALLY 24 IN O.C. MAX. FLANGE PORTION ATTACHED TO EACH INTERSECTING STUD WITH 1/2 IN. LONG TYPE S-12 PANHEAD STEEL SCREW.
  - FIBER, DRY - DRY DENSE PACKED CELLULOSE MATERIAL. INSULATION IS APPLIED DRY AND DENSE PACKED INTO CAVITY. GYPSUM PANELS ARE INSTALLED ON BOTH FACES OF THE WALL FIRST WITH A GAP LEFT AT THE TOP OF EACH STUD BAY TO BE FILLED AFTER INSTALLATION. TESTING WILL BE PERFORMED TO ENSURE PROPER DENSITY AND THAT ENTIRE CAVITY IS FILLED, ESP. AROUND AND BELOW ELECTRICAL BOXES AND SWITCHES, ETC.
  - TYPE X GYP BOARD - NOM. 5/8 IN. THICK, 4 FT. WIDE, GYP BOARD PANELS WITH BEVELED, SQUARE OR TAPERED EDGES, APPLIED VERT. OR HORIZ. SINGLE LAYER INSTALLED ON EA. SIDE OF STL STUDS. VERTICAL JOINTS CENTERED OVER STUDS AND STAGGERED ONE STUD CAVITY ON OPPOSITE SIDES OF STUDS. HORIZ. EDGE JOINTS AND HORIZ. BUTT JOINTS NEED NOT BE BACKED BY FRAMING. HORIZ. BUTT JOINTS ON OPPOSITE SIDES OF STL STUDS NEED NOT BE STAGGERED. PANELS ATTACHED TO STL STUDS AND FL RUNNER WITH 1 IN. LONG TYPE S STL SCREWS SPACED 8 IN. O.C. PANELS ATTACHED TO RESILIENT CHANNELS WITH 1 IN. LONG TYPE S STL SCREWS SPACED 8 IN. O.C. WHEN APPLIED HORIZ. OR 8 IN. O.C. ALONG VERT. AND BOTTOM EDGES AND 12 IN. O.C. IN THE FIELD WHEN APPLIED VERT. WHEN USED IN WIDTH OTHER THAN 48 IN. GYP PANELS TO BE INSTALLED HORIZ. UNITED STATES GYP COMPANY - 5/8" SHEETROCK BRAND FIRECODE CORE GYP PANELS
  - JOINT TAPE AND COMPOUND - (NOT SHOWN) VINYL, DRY OR PREMIXED JOINT COMPOUND, APPLIED IN TWO COATS TO JOISTS AND SCREW HEADS; PAPER TAPE, 2 IN. WIDE, EMBEDDED IN FIRST LAYER OF COMPOUND OVER ALL JNTS.
  - SEALANT - UL AND STC LISTED SEALANT, FULL PERIMETER BOTH SIDES.
  - BLOCKING - (NOT SHOWN) WOOD BLOCKING AS NEEDED
  - TAPE AND COMPOUND - (NOT SHOWN) VINYL, DRY OR PREMIXED JOINT COMPOUND, APPLIED IN TWO COATS TO JOISTS AND SCREW HEADS; PAPER TAPE, 2 IN. WIDE, EMBEDDED IN FIRST LAYER OF COMPOUND OVER ALL JOINTS.
  - SCHEDULED BASE - SEE FINISH SCHEDULE
  - UNDERSIDE OF STRUCTURE
  - TOP OF STRUCTURE

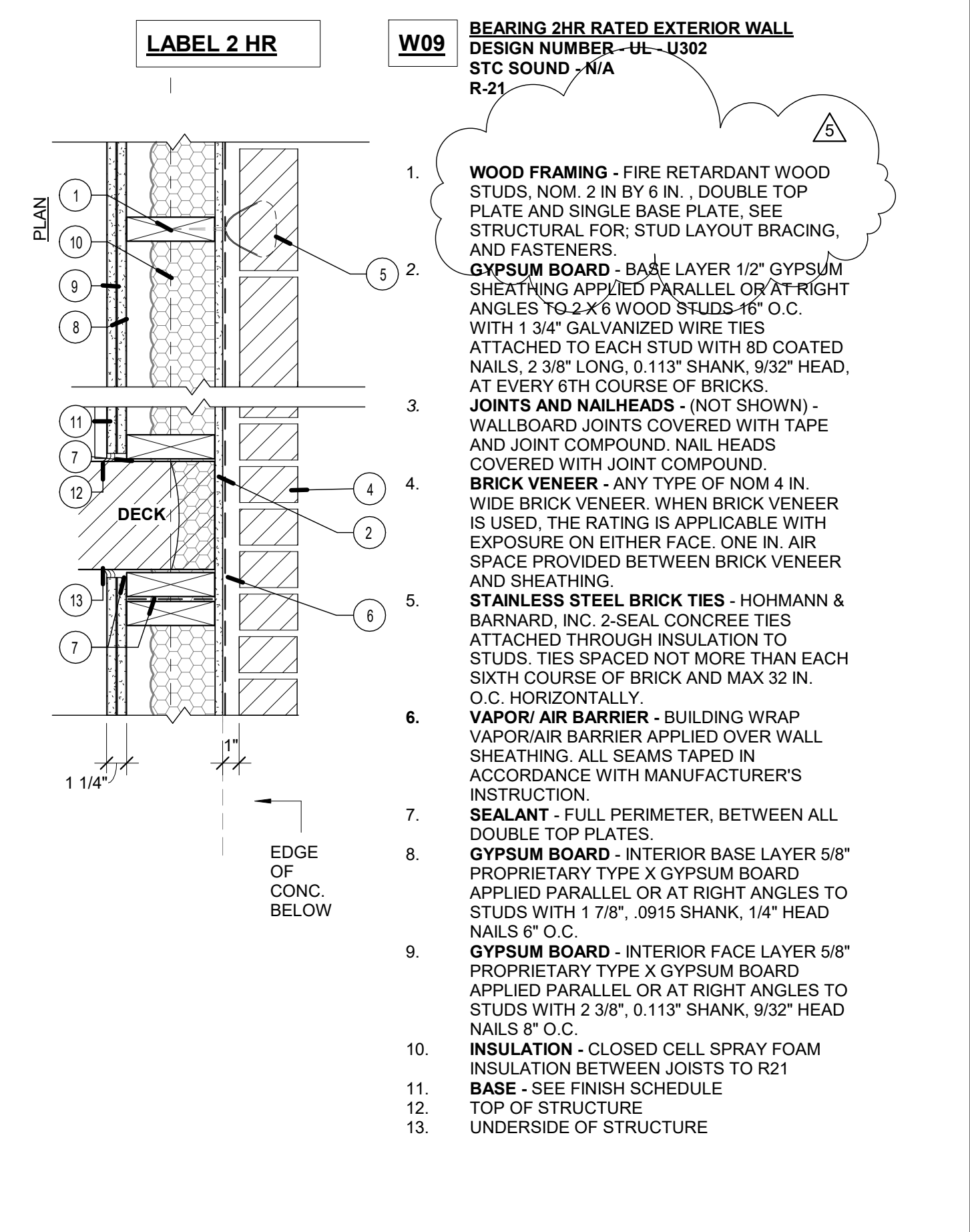
**5** WALL 13- LOADBEARING CORRIDOR WALL  
1 1/2" = 1'-0"

NOTE: MAX. 1" SCREWS SECURING GYP BD TO RESILIENT CHANNELS TO PREVENT SCREWS FROM TOUCHING STUDS & SHORT-CIRCUITING RESILIENT CHANNEL



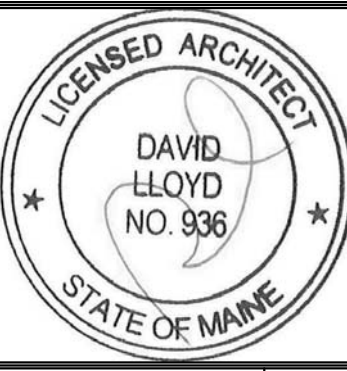
- W11** BEARING 2HR RATED EXTERIOR WALL  
DESIGN NUMBER - UL - U302  
STC SOUND - N/A  
R-21
- FIRE RETARDANT WOOD STUDS - (ADDED) - Nom. 2 x 6 IN. SPACED 16IN OR 24 IN O.C. w/ (2) 2 x 6 IN. TOP PLATE AND (1) 2 x 6 IN. BOTTOM PLATE. SEE STRUCTURAL FOR SPACING.
  - GYPSUM BOARD - INTERIOR BASE LAYER 5/8" PROPRIETARY TYPE X GYPSUM BOARD APPLIED PARALLEL OR AT RIGHT ANGLES TO STUDS WITH 1 7/8", .0915 SHANK, 1/4" HEAD NAILS 6" O.C.
  - GYPSUM BOARD - INTERIOR FACE LAYER 5/8" PROPRIETARY TYPE X GYPSUM BOARD APPLIED PARALLEL OR AT RIGHT ANGLES TO STUDS WITH 2 3/8", 0.113" SHANK, 9/32" HEAD NAILS 8" O.C.
  - INSULATION - CLOSED CELL SPRAY FOAM INSULATION BETWEEN JOISTS TO R21
  - SEALANT - FULL PERIMETER, BETWEEN ALL DOUBLE TOP PLATES
  - BASE - SEE FINISH SCHEDULE
  - UNDERSIDE OF STRUCTURE
  - TOP OF STRUCTURE

**3** WALL 11- 2 HR LOADBEARING WALL  
1 1/2" = 1'-0"



- W09** BEARING 2HR RATED EXTERIOR WALL  
DESIGN NUMBER - UL - U302  
STC SOUND - N/A  
R-21
- WOOD FRAMING - FIRE RETARDANT WOOD STUDS, NOM. 2 IN BY 6 IN., DOUBLE TOP PLATE AND SINGLE BASE PLATE. SEE STRUCTURAL FOR: STUD LAYOUT BRACING, AND FASTENERS.
  - GYPSUM BOARD - BASE LAYER 1/2" GYPSUM SHEATHING APPLIED PARALLEL OR AT RIGHT ANGLES TO 2 X 6 WOOD STUDS-16" O.C. WITH 1 3/4" GALVANIZED WIRE TIES ATTACHED TO EACH STUD WITH 8D COATED NAILS, 2 3/8" LONG, 0.113" SHANK, 9/32" HEAD, AT EVERY 6TH COURSE OF BRICKS.
  - JOINTS AND NAILHEADS - (NOT SHOWN) - WALLBOARD JOINTS COVERED WITH TAPE AND JOINT COMPOUND. NAIL HEADS COVERED WITH JOINT COMPOUND.
  - BRICK VENEER - ANY TYPE OF NOM 4 IN. WIDE BRICK VENEER. WHEN BRICK VENEER IS USED, THE RATING IS APPLICABLE WITH EXPOSURE ON EITHER FACE. ONE IN. AIR SPACE PROVIDED BETWEEN BRICK VENEER AND SHEATHING.
  - STAINLESS STEEL BRICK TIES - HOHMANN & BARNARD, INC. 2-SEAL CONCRETE TIES ATTACHED THROUGH INSULATION TO STUDS. TIES SPACED NOT MORE THAN EACH SIXTH COURSE OF BRICK AND MAX 32 IN. O.C. HORIZONTALLY.
  - VAPOR AIR BARRIER - BUILDING WRAP VAPOR/AIR BARRIER APPLIED OVER WALL SHEATHING. ALL SEAMS TAPED IN ACCORDANCE WITH MANUFACTURER'S INSTRUCTION.
  - SEALANT - FULL PERIMETER, BETWEEN ALL DOUBLE TOP PLATES.
  - GYPSUM BOARD - INTERIOR BASE LAYER 5/8" PROPRIETARY TYPE X GYPSUM BOARD APPLIED PARALLEL OR AT RIGHT ANGLES TO STUDS WITH 1 7/8", .0915 SHANK, 1/4" HEAD NAILS 8" O.C.
  - GYPSUM BOARD - INTERIOR FACE LAYER 5/8" PROPRIETARY TYPE X GYPSUM BOARD APPLIED PARALLEL OR AT RIGHT ANGLES TO STUDS WITH 2 3/8", 0.113" SHANK, 9/32" HEAD NAILS 8" O.C.
  - INSULATION - CLOSED CELL SPRAY FOAM INSULATION BETWEEN JOISTS TO R21
  - BASE - SEE FINISH SCHEDULE
  - TOP OF STRUCTURE
  - UNDERSIDE OF STRUCTURE

**1** -WALL 09 -WOOD STUD / EXTERIOR BRICK VENEER  
1 1/2" = 1'-0"



Prepared For:  
**747 CONGRESS LLC**

Consultant:

Architect:  
**ARCHETYPE architects**  
48 Union Wharf Portland, Maine 04101  
(207) 772-6022 ARCHETYPE@ARCHETYPEPA.COM

Project:  
**THE FRANCIS**  
749 CONGRESS ST  
PORTLAND, ME 04102

Revisions:	1	07-22-20	ADDENDUM 01
	16		
	5	10-04-20	ADDENDUM 05
	16		

Date: 07 OCT 2016  
Scale: 1 1/2" = 1'-0"  
**WALL TYPES**

**A4.01**