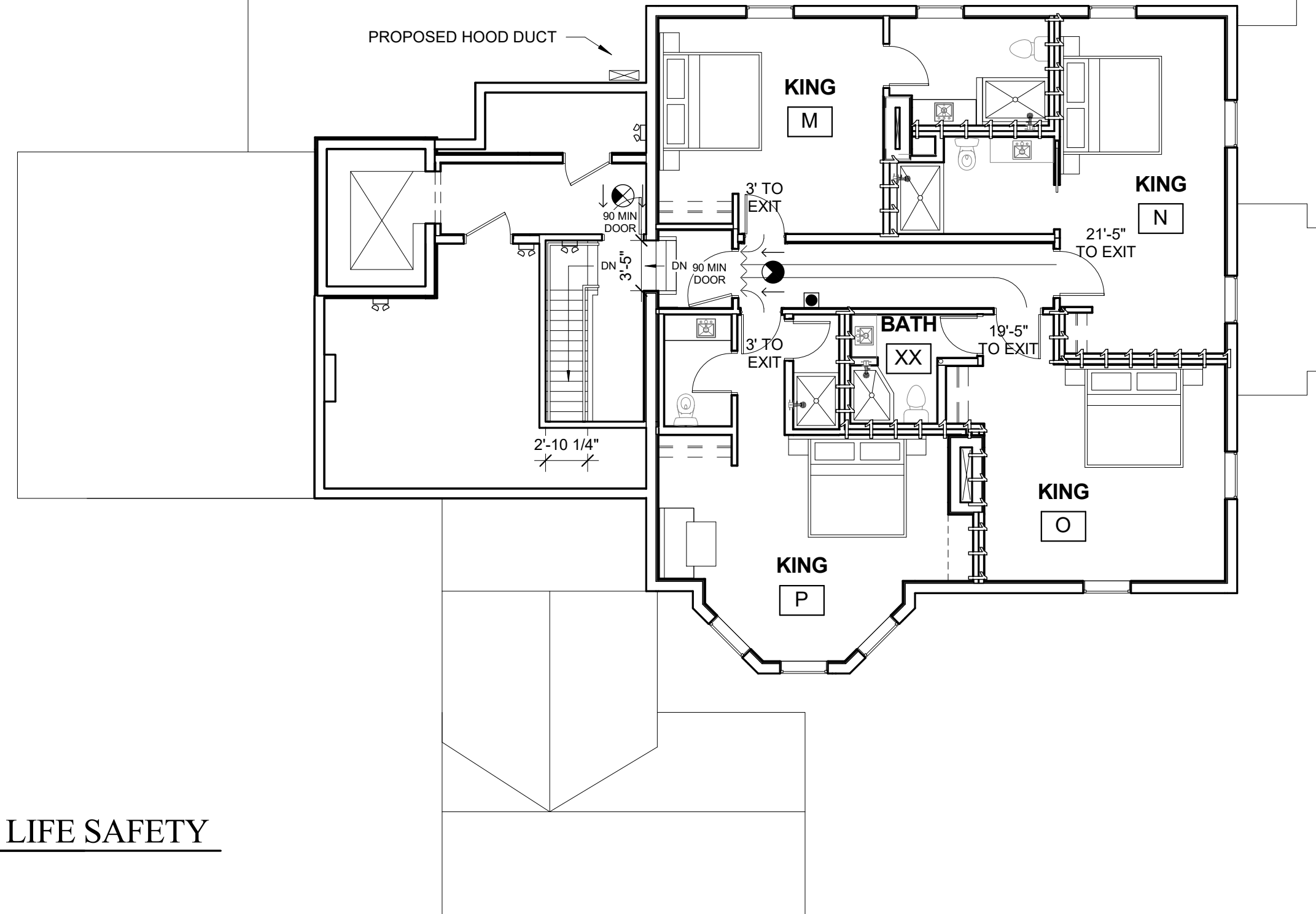
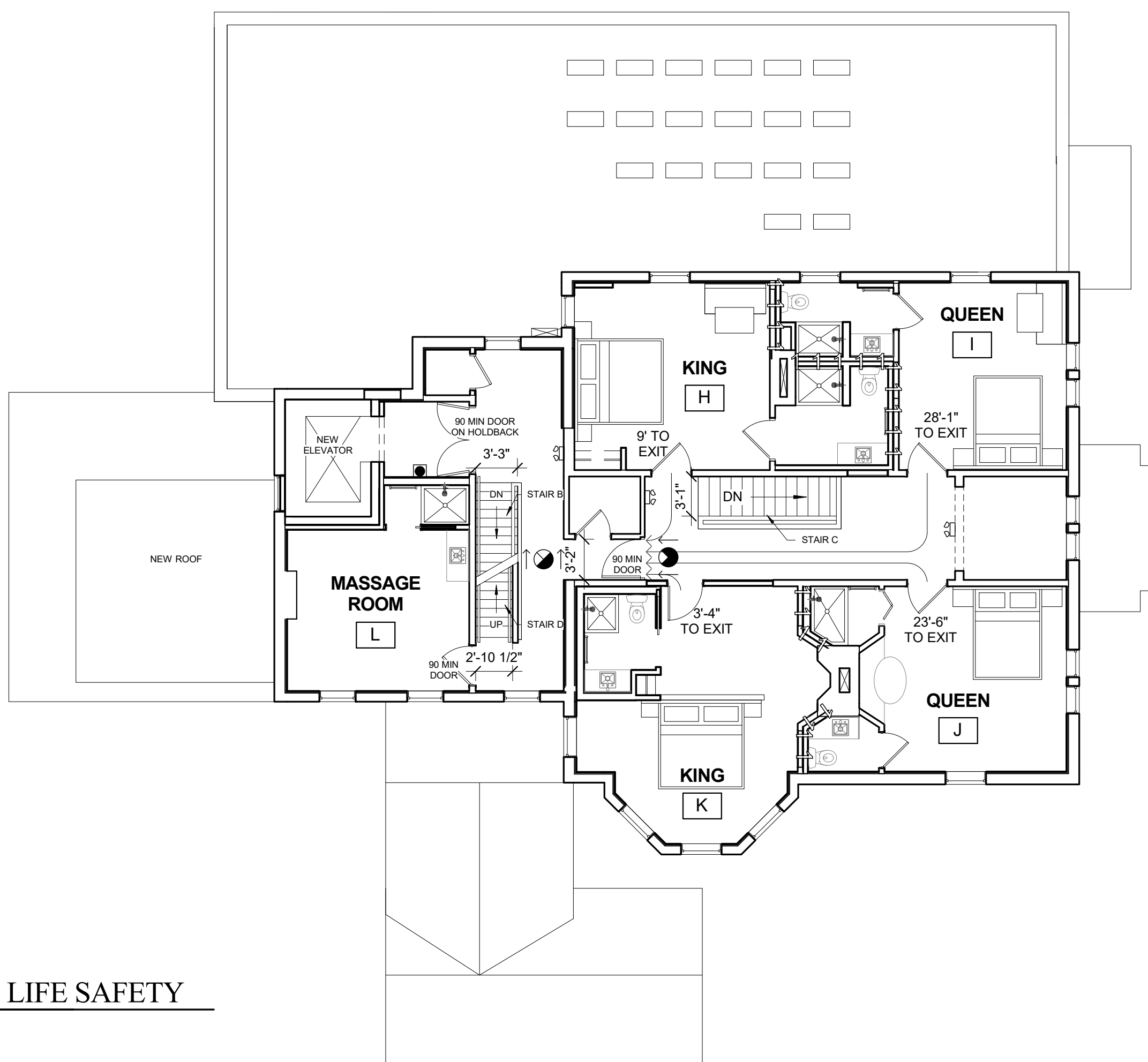


EMERGENCY LIGHTS	
NEW WALL - 1	
NEW WALL - 2	
NEW OR COMMON PATH OF TRAVEL LENGTH	
EXIT SIGN	
EXIT ENTRANCE	
FIRE EXTINGUISHER	
STROBE	

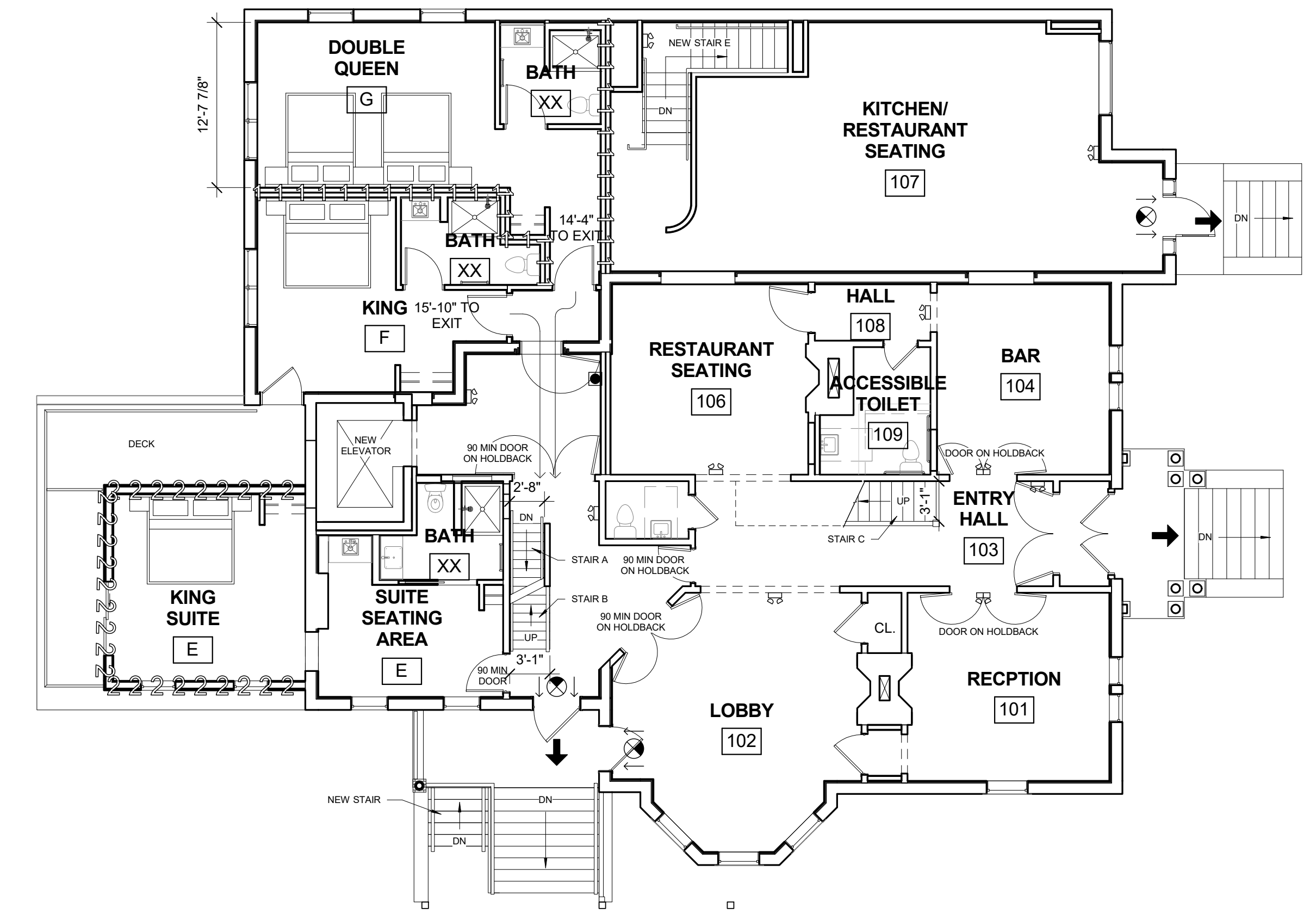
**LIFE SAFETY LEGEND**  
1/8" = 1'-0"



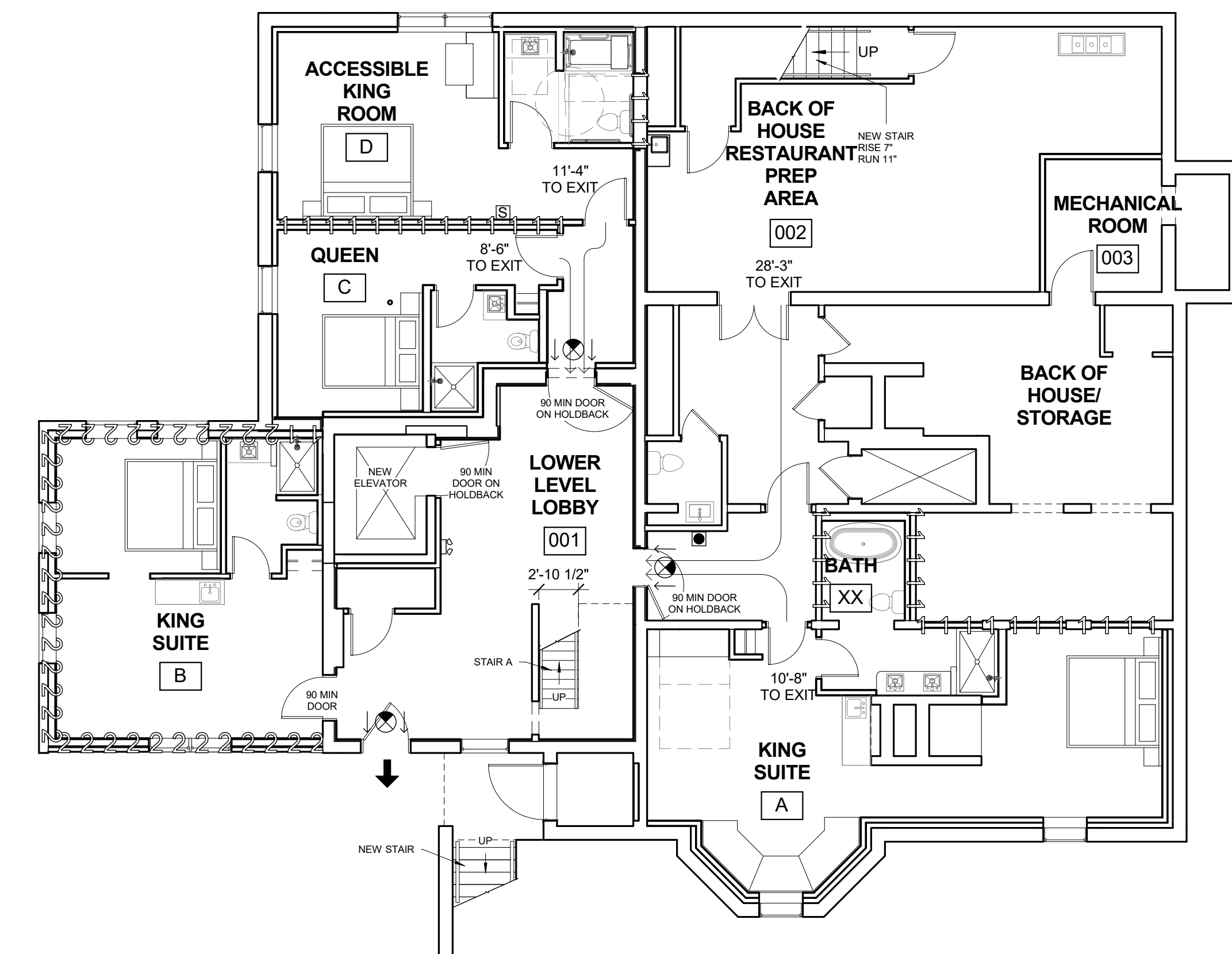
**4 | 3RD FLOOR - LIFE SAFETY**  
1/8" = 1'-0"



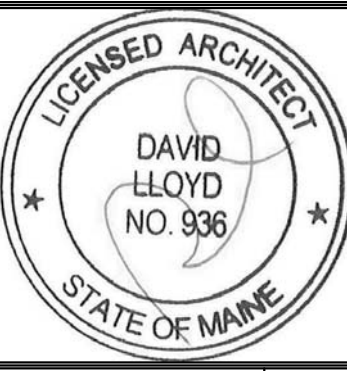
**3 | 2ND FLOOR - LIFE SAFETY**  
1/8" = 1'-0"



**2 | 1ST FLOOR - LIFE SAFETY**  
1/8" = 1'-0"



**1 | GROUND FLOOR - LIFE SAFETY**  
1/8" = 1'-0"



Prepared For:  
**747 CONGRESS LLC**

Consultant:  
**ARCHETYPE architects**  
48 Union Wharf Portland, Maine 04101  
(207) 772-6022 ARCHETYPE@ARCHETYPEPA.COM

Project:  
**THE FRANCIS**  
749 CONGRESS ST  
PORTLAND, ME 04102

Revisions:  
Date: **03 AUG 2016**  
Scale: **1/8" = 1'-0"**  
**LIFE SAFETY**

**LS1.1**