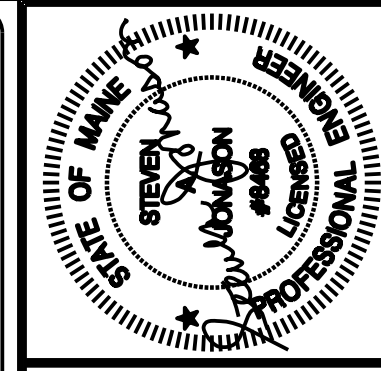


PROGRESS PRINT
NOT FOR CONSTRUCTION



Prepared For:
**747 CONGRESS
LLC**

Consulting Engineer:
**BENNETT
ENGINEERING**
MECHANICAL • ELECTRICAL
(207) 865-9475

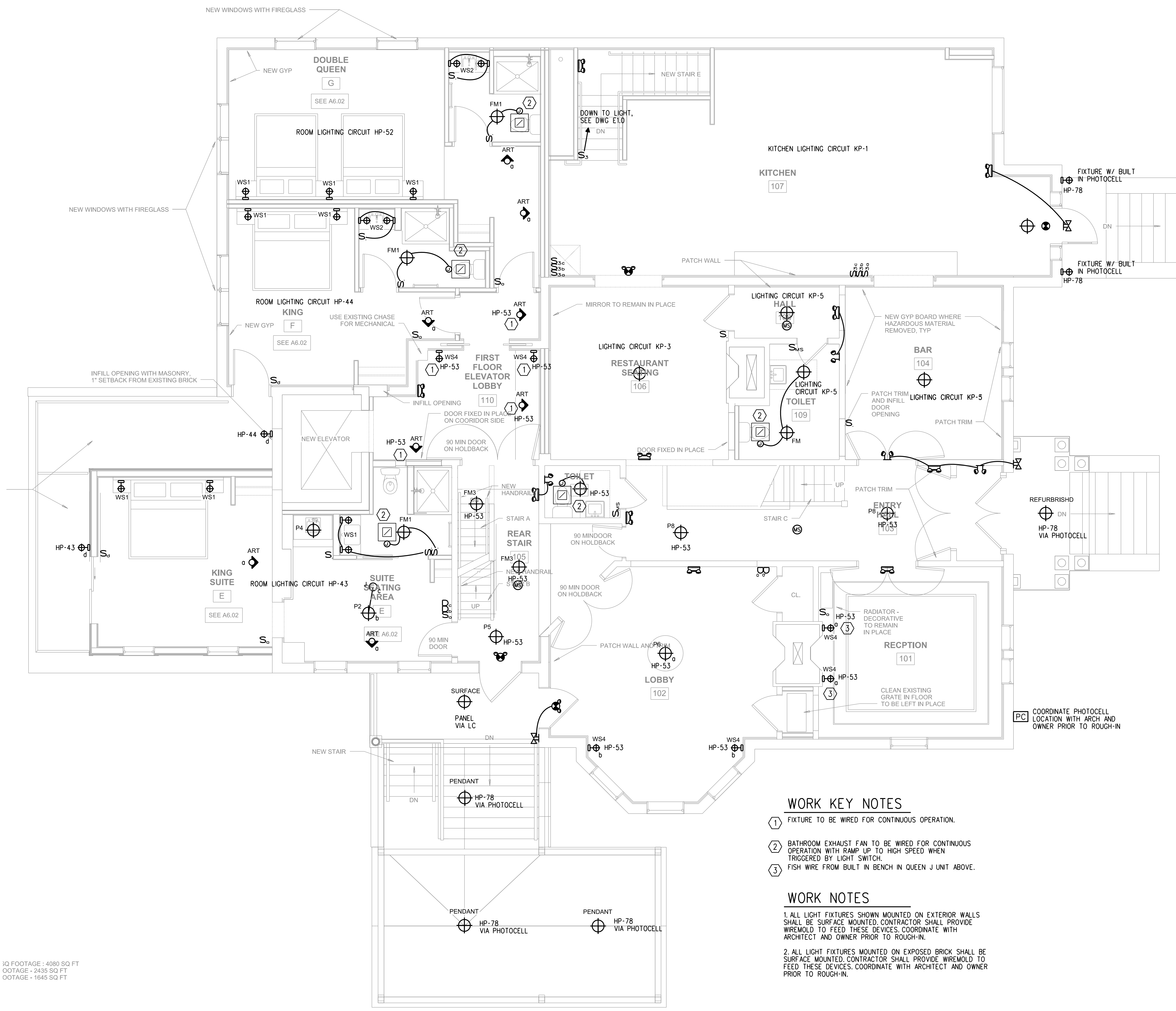
Architect:
**ARCHETYPE
architects**
48 Union Wharf Portland, Maine 04101
(207) 772-6022 Fax (207) 772-4056

Project:
FRANCIS INN
749 CONGRESS ST
PORTLAND, ME 04102

Revisions:	Date:
07/06/16 PRICING	
07/18/16 PERMIT SET	

Scale: As Noted
Date: 07/18/2016
**FIRST FLOOR
LIGHTING PLAN**

E1.1



WORK KEY NOTES

- ① FIXTURE TO BE WIRED FOR CONTINUOUS OPERATION.
- ② BATHROOM EXHAUST FAN TO BE WIRED FOR CONTINUOUS OPERATION WITH RAMP UP TO HIGH SPEED WHEN TRIGGERED BY LIGHT SWITCH.
- ③ FISH WIRE FROM BUILT IN BENCH IN QUEEN J UNIT ABOVE.

WORK NOTES

- 1. ALL LIGHT FIXTURES SHOWN MOUNTED ON EXTERIOR WALLS SHALL BE SURFACE MOUNTED. CONTRACTOR SHALL PROVIDE WIREMOLD TO FEED THESE DEVICES. COORDINATE WITH ARCHITECT AND OWNER PRIOR TO ROUGH-IN.
- 2. ALL LIGHT FIXTURES MOUNTED ON EXPOSED BRICK SHALL BE SURFACE MOUNTED. CONTRACTOR SHALL PROVIDE WIREMOLD TO FEED THESE DEVICES. COORDINATE WITH ARCHITECT AND OWNER PRIOR TO ROUGH-IN.

3Q FOOTAGE : 4080 SQ FT
OOTAGE - 2435 SQ FT
OOTAGE - 1645 SQ FT

FIRST FLOOR PLAN
SCALE: 1/4"=1'-0"