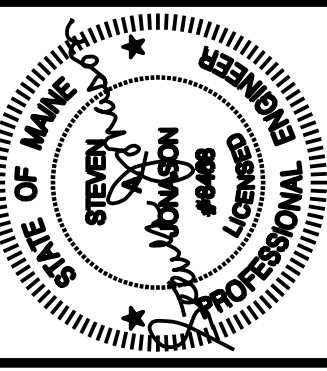
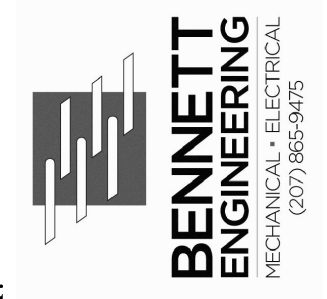


PROGRESS PRINT
NOT FOR CONSTRUCTION



Prepared For:
747 CONGRESS LLC



Consulting Engineer:
BENNETT ENGINEERING
MECHANICAL • ELECTRICAL
00718659475

Architect:
ARCHETYPE architects
48 Union Wharf Portland, Maine 04101
(207) 772-6022 Fax (207) 772-4056

Project:
FRANCIS INN
749 CONGRESS ST
PORTLAND, ME 04102

Revisions:	07/06/16 PRICING
	07/18/16 PERMIT SET

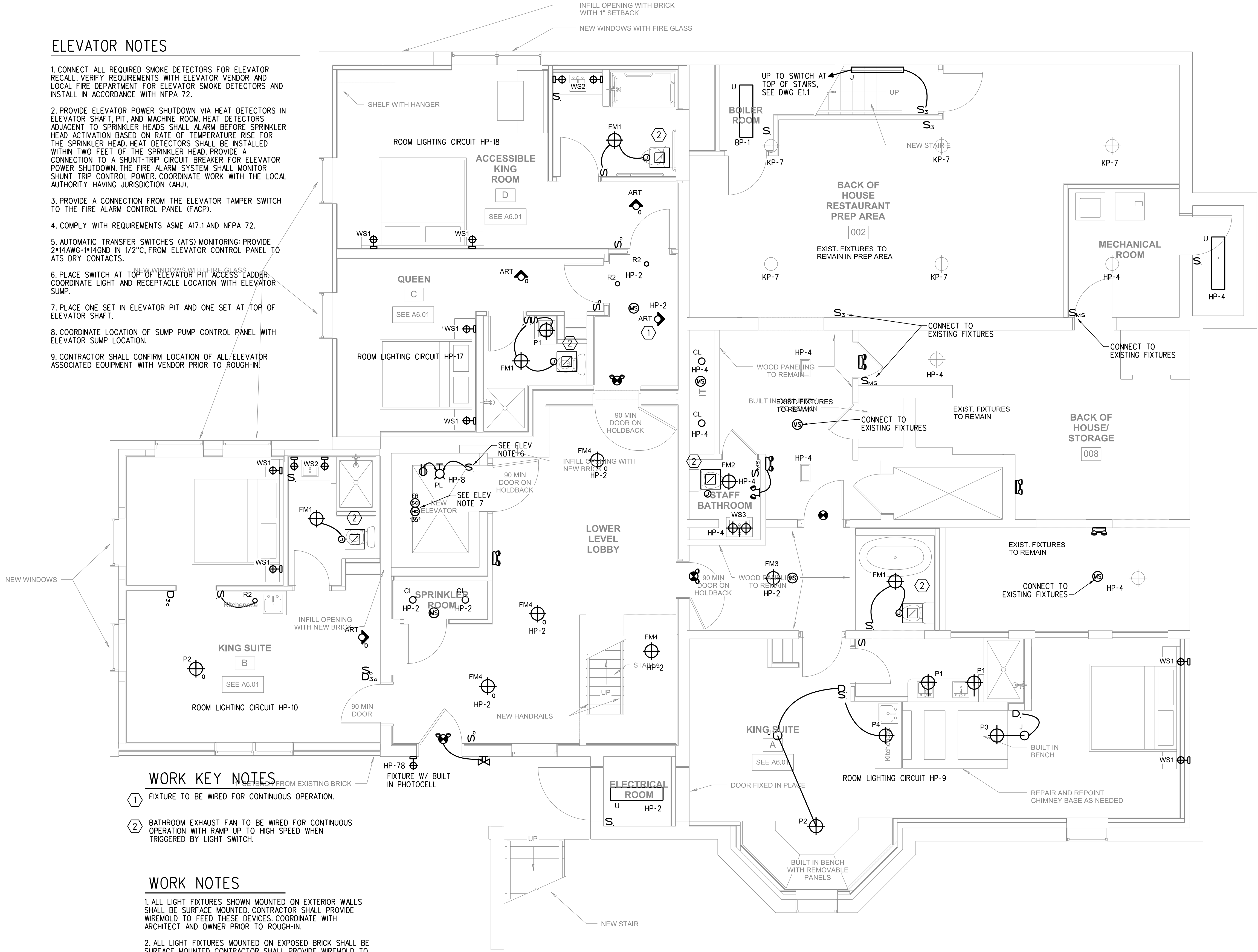
Date: 07/18/2016
Scale: As Noted

GROUND FLOOR LIGHTING PLAN

E1.0

ELEVATOR NOTES

1. CONNECT ALL REQUIRED SMOKE DETECTORS FOR ELEVATOR RECALL. VERIFY REQUIREMENTS WITH ELEVATOR VENDOR AND LOCAL FIRE DEPARTMENT FOR ELEVATOR SMOKE DETECTORS AND INSTALL IN ACCORDANCE WITH NFPA 72.
2. PROVIDE ELEVATOR POWER SHUTDOWN VIA HEAT DETECTORS IN ELEVATOR SHAFT, PIT, AND MACHINE ROOM. HEAT DETECTORS ADJACENT TO SPRINKLER HEADS SHALL ALARM BEFORE SPRINKLER HEAD ACTIVATION BASED ON RATE OF TEMPERATURE RISE FOR THE SPRINKLER HEAD. HEAT DETECTORS SHALL BE INSTALLED WITHIN TWO FEET OF THE SPRINKLER HEAD. PROVIDE A CONNECTION TO A SHUNT-TRIP CIRCUIT BREAKER FOR ELEVATOR POWER SHUTDOWN. THE FIRE ALARM SYSTEM SHALL MONITOR SHUNT TRIP CONTROL POWER. COORDINATE WORK WITH THE LOCAL AUTHORITY HAVING JURISDICTION (AHJ).
3. PROVIDE A CONNECTION FROM THE ELEVATOR TAMPER SWITCH TO THE FIRE ALARM CONTROL PANEL (FACP).
4. COMPLY WITH REQUIREMENTS ASME A17.1 AND NFPA 72.
5. AUTOMATIC TRANSFER SWITCHES (ATS) MONITORING: PROVIDE 2*14AWG-1*14GND IN 1/2" C, FROM ELEVATOR CONTROL PANEL TO ATS DRY CONTACTS.
6. PLACE SWITCH AT TOP OF ELEVATOR PIT ACCESS LADDER. COORDINATE LIGHT AND RECEPTACLE LOCATION WITH ELEVATOR SUMP.
7. PLACE ONE SET IN ELEVATOR PIT AND ONE SET AT TOP OF ELEVATOR SHAFT.
8. COORDINATE LOCATION OF SUMP PUMP CONTROL PANEL WITH ELEVATOR SUMP LOCATION.
9. CONTRACTOR SHALL CONFIRM LOCATION OF ALL ELEVATOR ASSOCIATED EQUIPMENT WITH VENDOR PRIOR TO ROUGH-IN.



WORK KEY NOTES

1. FIXTURE TO BE WIRED FOR CONTINUOUS OPERATION.
2. BATHROOM EXHAUST FAN TO BE WIRED FOR CONTINUOUS OPERATION WITH RAMP UP TO HIGH SPEED WHEN TRIGGERED BY LIGHT SWITCH.

WORK NOTES

1. ALL LIGHT FIXTURES SHOWN MOUNTED ON EXTERIOR WALLS SHALL BE SURFACE MOUNTED. CONTRACTOR SHALL PROVIDE WIREMOLD TO FEED THESE DEVICES. COORDINATE WITH ARCHITECT AND OWNER PRIOR TO ROUGH-IN.
2. ALL LIGHT FIXTURES MOUNTED ON EXPOSED BRICK SHALL BE SURFACE MOUNTED. CONTRACTOR SHALL PROVIDE WIREMOLD TO FEED THESE DEVICES. COORDINATE WITH ARCHITECT AND OWNER PRIOR TO ROUGH-IN.

GROUND FLOOR PLAN

SCALE: 1/4" = 1'-0"