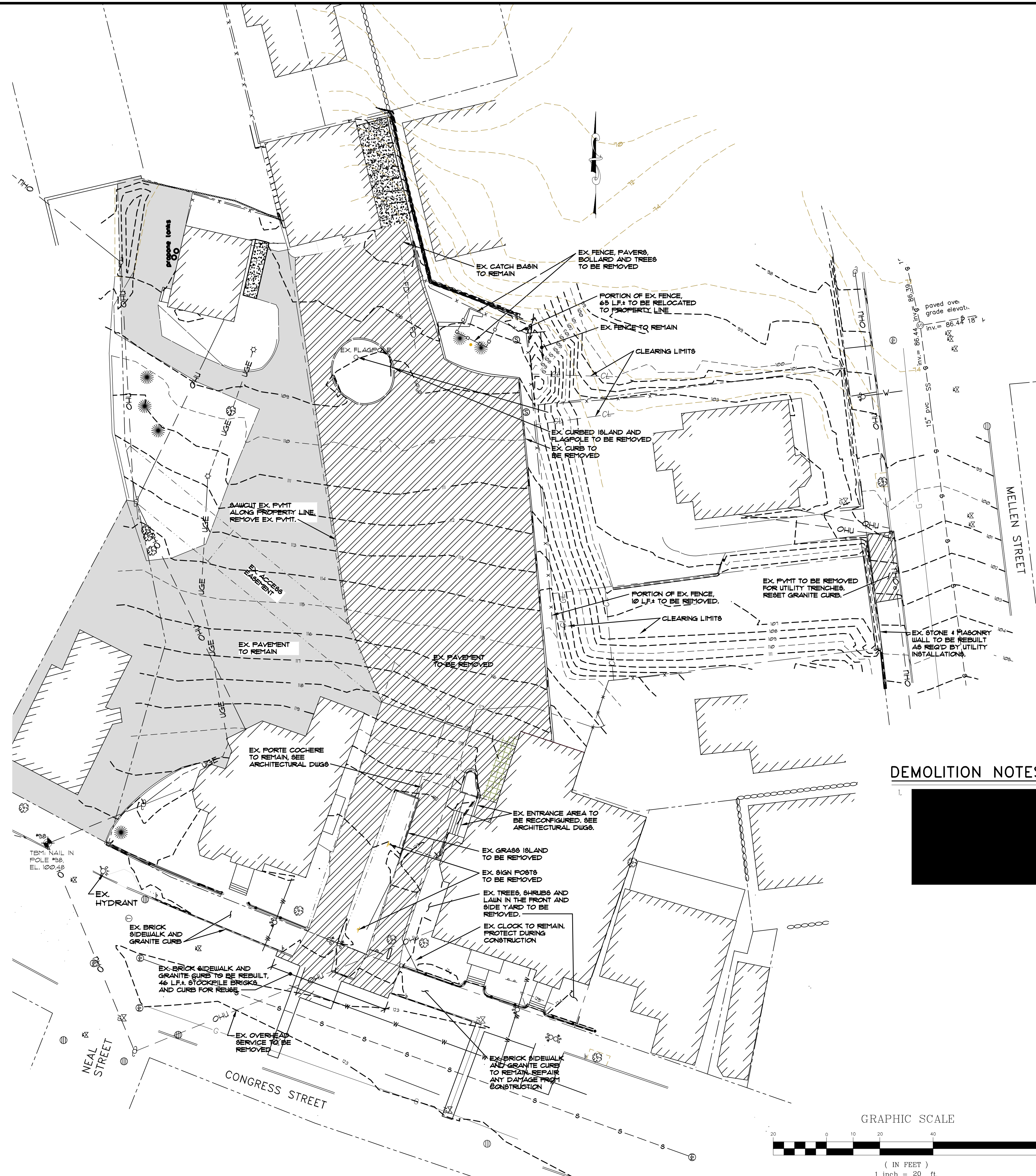


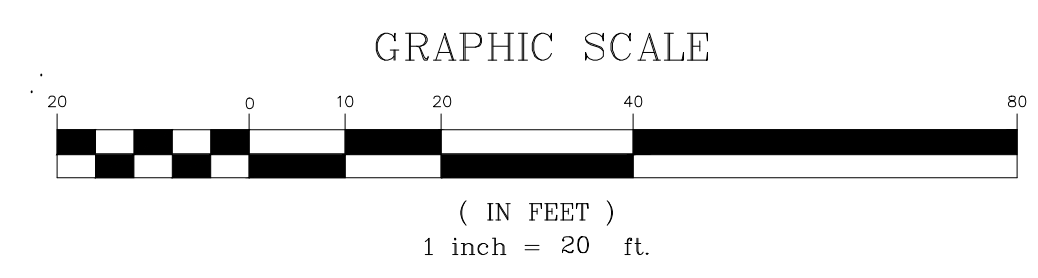
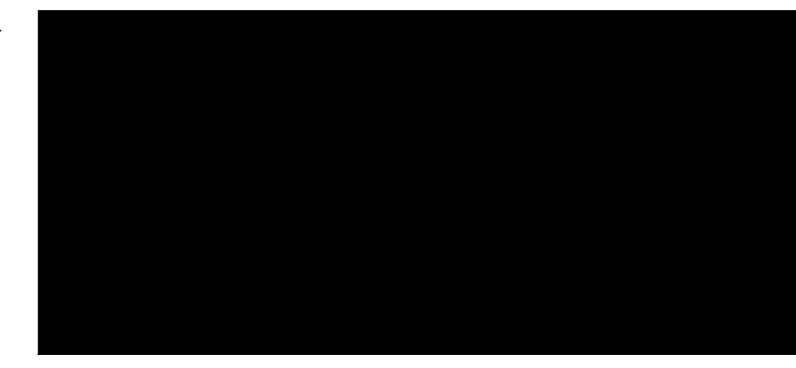
LEGEND

EXISTING

- PROPERTY LINE
- - - ADJUTERS PROPERTY
- - - EASEMENT
- - - EDGE OF PAVEMENT
- - - CONTOURS
- - - BUILDING
- - - CURB
- - - GAS LINE
- - - SANITARY SEWER
- - - STORM DRAIN
- - - OVERHEAD UTILITY
- - - WATER LINE
- - - CATCH BASIN
- - - SEWER MANHOLE
- - - HYDRANT
- - - WATER VALVE
- - - GAS VALVE
- - - POLE MOUNTED TRANSFORMER
- - - UTILITY POLE W/ GUY WIRE
- - - LIGHT POLE
- - - AREA LIGHT ON POLE
- - - SIGN
- - - FENCE
- - - BENCHMARK
- - - TREE
- /// IMPERVIOUS TO BE REMOVED



DEMOLITION NOTES



NOT FOR CONSTRUCTION

REV.	DATE	DESCRIPTION
3	6/29/16	ADDED EASEMENTS AND STAFF COMMENTS
2	6/7/16	REVISED UTILITIES
1	4/8/16	PER STAFF COMMENTS

APPLICANT: DENOVO, LLC 47 WAITES LANDING ROAD FALMOUTH, MAINE	DRN BY: JDC
SCALE: AS SHOWN	DESIGN BY: TSG
DATE: FEBRUARY 22, 2016	CHK BY:
PROJECT: 15156	

749 CONGRESS STREET
749 CONGRESS STREET
PORTLAND, MAINE

**EXISTING CONDITIONS
AND DEMOLITION PLAN**

C1.3