

Prepared For:
747 CONGRESS
 LLC
 Address
 City, State

Consultant:

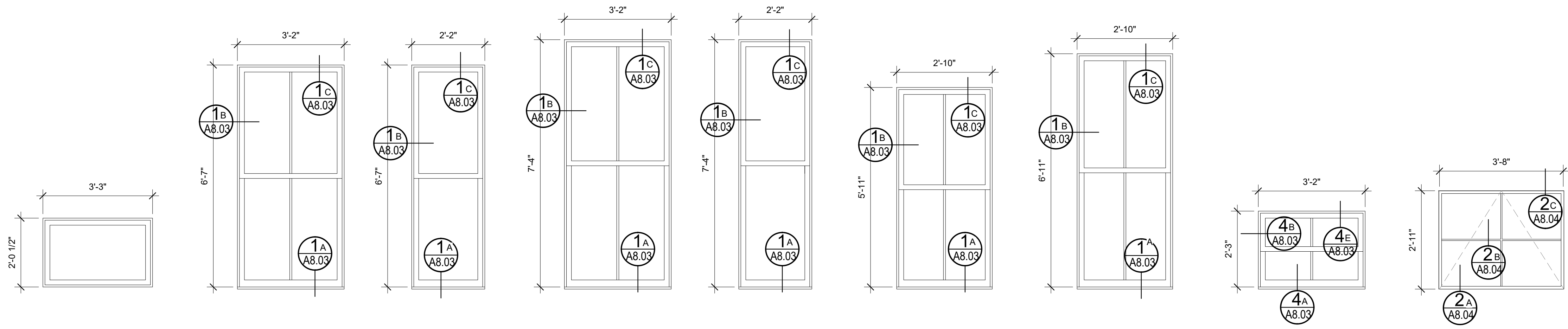
ARCHETYPE
 architects
 48 Union Wharf Portland, Maine 04101
 (207) 772-6022 ARCHETYPE@ARCHETYPEPA.COM

Architect:

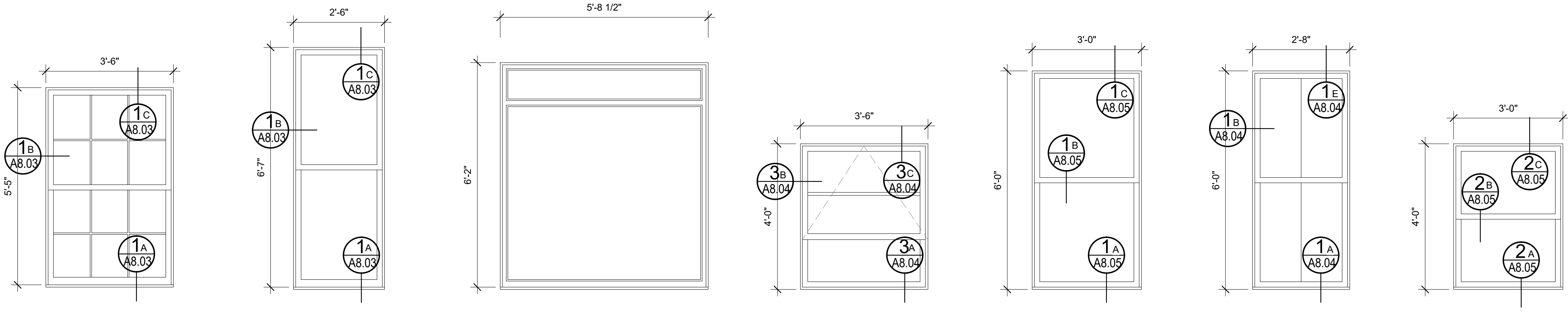
Project:
THE FRANCIS
 749 CONGRESS ST
 PORTLAND, ME 04102

Revisions:

Date: 03 AUG 2016
 Scale: 1/2" = 1'-0"
WINDOW SCHEDULE



- TYPE A**
 (EXISTING)
 -FIXED IN MASONRY OPENING
 -WOOD WINDOW
 -REFURBISH
- TYPE B**
 (EXISTING)
 -DOUBLE HUNG
 IN MASONRY OPENING
 -WOOD WINDOW
 -REFURBISH
 -NEW EXTERIOR ALUM. STORM
 WINDOW
- TYPE C**
 (EXISTING)
 -DOUBLE HUNG IN
 MASONRY OPENING
 -WOOD WINDOW
 -REFURBISH
 -NEW EXTERIOR ALUM. STORM
 WINDOW
- TYPE D**
 (EXISTING)
 -DOUBLE HUNG IN
 MASONRY OPENING
 -WOOD WINDOW
 -REFURBISH
 -NEW EXTERIOR ALUM. STORM
 WINDOW
- TYPE E**
 (EXISTING)
 -DOUBLE HUNG IN
 MASONRY OPENING
 -WOOD WINDOW
 -REFURBISH
 -NEW EXTERIOR ALUM.
 STORM WINDOW
- TYPE F**
 (EXISTING)
 -DOUBLE HUNG IN
 MASONRY OPENING
 -WOOD WINDOW
 -REFURBISH
 -NEW EXTERIOR ALUM.
 STORM WINDOW
- TYPE G**
 (EXISTING)
 -DOUBLE HUNG IN
 MASONRY OPENING
 -WOOD WINDOW
 -REFURBISH
 -NEW EXTERIOR ALUM.
 STORM WINDOW
- TYPE H**
 (NEW)
 -DOUBLE HUNG IN
 MASONRY OPENING
 -WOOD WINDOW
 -NEW EXTERIOR ALUM.
 STORM WINDOW
- TYPE I**
 (NEW)
 -UNIVERSAL 700 SERIES
 ALUMINUM AWNING
 WINDOW IN MASONRY
 OPENING WITH FIREGLASS



- TYPE J**
 (EXISTING)
 -DOUBLE HUNG IN
 MASONRY OPENING
 -WOOD WINDOW
 -REFURBISH
 -NEW EXTERIOR ALUM.
 STORM WINDOW
- TYPE K**
 (EXISTING)
 -DOUBLE HUNG IN
 MASONRY OPENING
 -WOOD WINDOW
 -REFURBISH
 -NEW EXTERIOR ALUM.
 STORM WINDOW
- TYPE L**
 (EXISTING TO REMAIN)
 -FIXED IN MASONRY OPENING
 -ALUMINUM WINDOW
- TYPE M**
 (NEW)
 -UNIVERSAL 700 SERIES
 ALUMINUM AWNING
 WINDOW IN MASONRY
 OPENING WITH FIREGLASS
- TYPE N**
 (NEW)
 -NEW UNIVERSAL 400 SERIES
 ALUMINUM DOUBLE HUNG
 WINDOW IN MASONRY
 OPENING WITH FIREGLASS
- TYPE O**
 (NEW)
 -DOUBLE HUNG
 -WOOD WINDOW
- TYPE P**
 (NEW)
 -NEW UNIVERSAL 400 SERIES
 ALUMINUM DOUBLE HUNG WINDOW
 IN MASONRY OPENING

1 | WINDOW ELEVATIONS
 1/2" = 1'-0"

GENERAL NOTES:
 ALL WINDOWS AND SURROUNDING EXT. TRIM TO BE SCRAPPED, REPAIRED AND REFINISHED
 ALL WINDOW DIMENSIONS TO BE VERIFIED IN FIELD.
 ALL EXISTING STORM WINDOWS & PLYWOOD TO BE REMOVED AND REPLACED UNLESS NOTED OTHERWISE.
 ALL SPRAY FOAM INSULATION IN CONTACT WITH WINDOW COMPONENTS TO BE LOW EXPANSION
 PROVIDE SILL LOCKING MECHANISM AT ALL OPERABLE WINDOWS - REFERENCE SPECIFICATION
 PROVIDE SCREENS AT ALL STORM WINDOWS
 INSPECT AND REPAIR/REPLACE WINDOW PAN FLASHING WITH LIKE MATERIALS. PROVIDE NEW METAL FLASHING AT NEW WINDOWS.

A8.02