

Prepared For:
747 CONGRESS
 LLC
 190 US Route One Box 294
 Falmouth, ME 04105

Consultant:

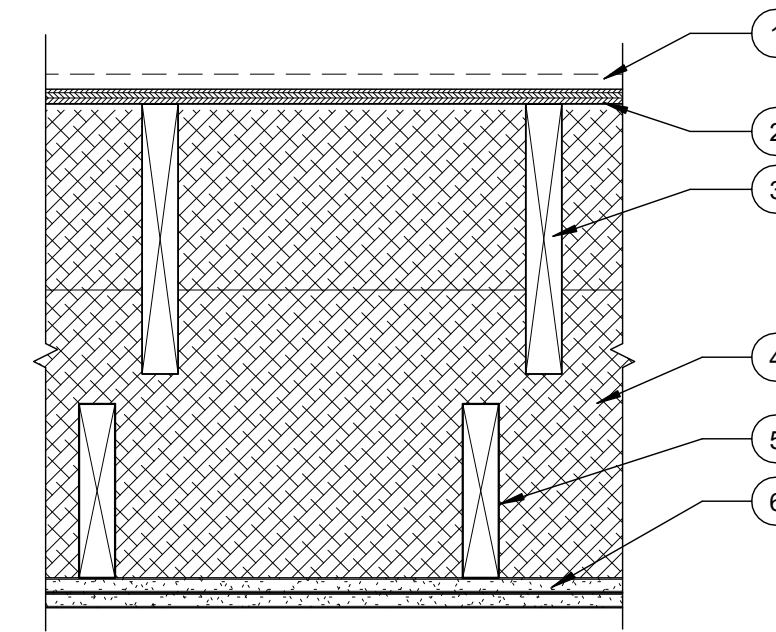
Architect:
ARCHETYPE
 architects
 48 Union Wharf Portland, Maine 04101
 (207) 772-6022 ARCHETYPE@ARCHETYPEPA.COM

Project:
THE FRANCIS
 749 CONGRESS ST
 PORTLAND, ME 04102

Revisions:	1	22 JULY 2016	Addendum 1
	3	03 AUG 2016	Addendum 3

Date: 03 AUG 2016
 Scale: 1 1/2" = 1'-0"
FLOOR TYPES

A4.02

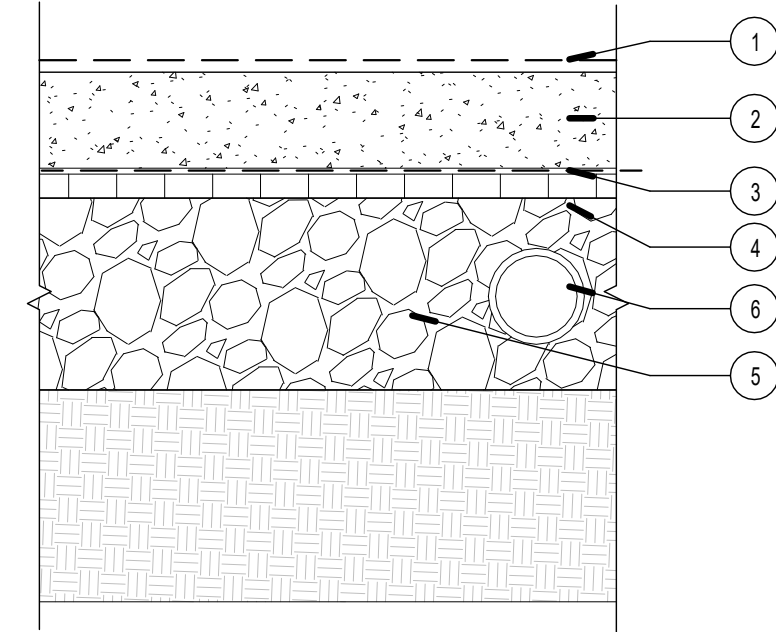


1 HR RATED CEILING/FLOOR ASSEMBLY
 (BASED ON GA FILE NOS. FC 5406)

1. FINISH FLOORING - NOT SHOWN, SEE FINISH SCHEDULE
2. SUBFLOORING - 5/8" PLYWOOD
3. WOOD JOISTS - 2X12 WOOD JOISTS @ 16" O.C. NOTCHED INTO 2X12 RIM BEYOND
4. CELLULOSE - BLOWN CELLULOSE IN CAVITY
5. RAFTERS - 2X8 RAFTERS ATTACHED TO 2X12 BEYOND
6. GYPSUM BOARD - NEW (2) LAYERS 5/8" TYPE X GYPSUM WALL BOARD APPLIED AT RIGHT ANGLES TO RAFTERS. BASE LAYER APPLIED WITH TYPE W OR S DRYWALL SCREWS. FACE LAYER APPLIED WITH 1 7/8" TYPE W OR S DRYWALL SCREWS. FACE LAYER JOINTS OFFSET 24" FROM BASE LAYER JOINTS.
7. TAPE AND COMPOUND - (NOT SHOWN) VINYL DRY OR PREMIXED JOINT COMPOUND, APPLIED IN TWO COATS TO JOISTS AND SCREW HEADS. PAPER TAPE, 2 IN. WIDE, EMBEDDED IN FIRST LAYER OF COMPOUND OVER ALL JOISTS.

6 | F5 - NEW KING SUITE E FLOOR ASSEMBLY

1 1/2" = 1'-0"

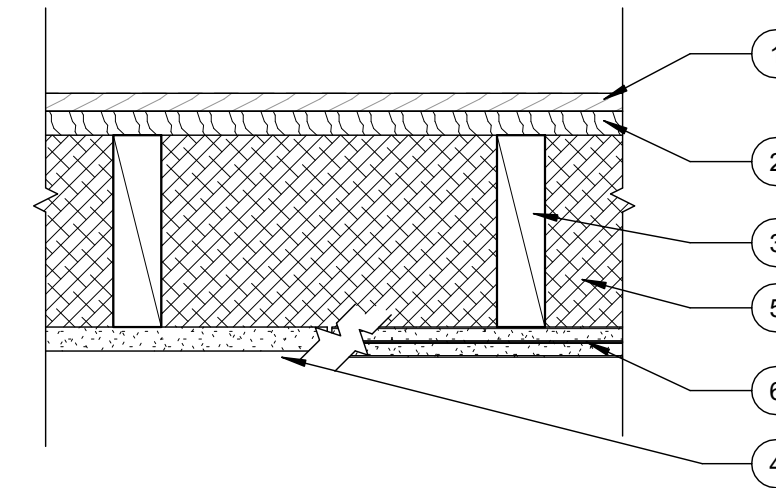


FLOOR SYSTEM - NEW SLAB ON GRADE

1. FINISH FLOOR - NOT SHOWN, SEE FINISH SCHEDULE.
2. CONCRETE SLAB - SEE STRUCTURAL FOR STRENGTH, THICKNESS AND REINFORCEMENT SPECIFICATIONS
3. VAPOR BARRIER - POLYETHYLENE VAPOR BARRIER SHEET WITH SEAMS OVERLAPPED AND TAPED - SEE SPECIFICATIONS
4. RIGID INSULATION - 1" 30 PSI EXTRUDED POLYSTYRENE - R-5.3 - CONTINUOUS UNDER ENTIRE SLAB
5. 8" TYPE A GRAVEL
6. 4" PERFORATED PVC RADON PIPE - SEE PLUMBING PLANS FOR ADDITIONAL INFORMATION

5 | F4 - NEW SLAB ON GRADE

1 1/2" = 1'-0"

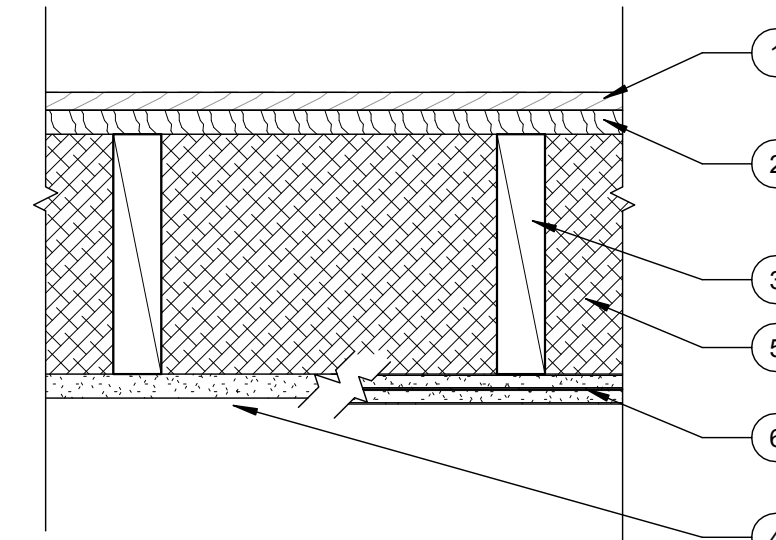


1 HR RATED CEILING/FLOOR ASSEMBLY
 NEW GYPSUM BOARD CEILING ADDED = 1 HR
 (BASED ON GA FILE NOS. FC 5406 AND RC 2601)

1. FINISH FLOORING - SEE FINISH SCHEDULE
2. SUBFLOORING - EXISTING 1" HARDWOOD RUNNING PERPENDICULAR TO JOISTS
3. WOOD JOISTS - EXISTING 2X8 WOOD JOISTS @ 16" O.C.
4. PLASTER - EXISTING 1" PLASTER ON WOOD LATH
5. CELLULOSE - NEW BLOWN CELLULOSE IN EXISTING CAVITIES
6. GYPSUM BOARD - NEW (2) LAYERS 5/8" TYPE X GYPSUM WALL BOARD APPLIED AT RIGHT ANGLES TO JOISTS. BASE LAYER APPLIED WITH TYPE W OR S DRYWALL SCREWS. FACE LAYER APPLIED WITH 1 7/8" TYPE W OR S DRYWALL SCREWS. FACE LAYER JOINTS OFFSET 24" FROM BASE LAYER JOINTS. GYPSUM BOARD APPLIED IN ROOMS WHERE PLASTER IS REMOVED.
7. TAPE AND COMPOUND - (NOT SHOWN) VINYL DRY OR PREMIXED JOINT COMPOUND, APPLIED IN TWO COATS TO JOISTS AND SCREW HEADS. PAPER TAPE, 2 IN. WIDE, EMBEDDED IN FIRST LAYER OF COMPOUND OVER ALL JOISTS.

4 | F3 - EXISTING THIRD FLOOR ASSEMBLY

1 1/2" = 1'-0"

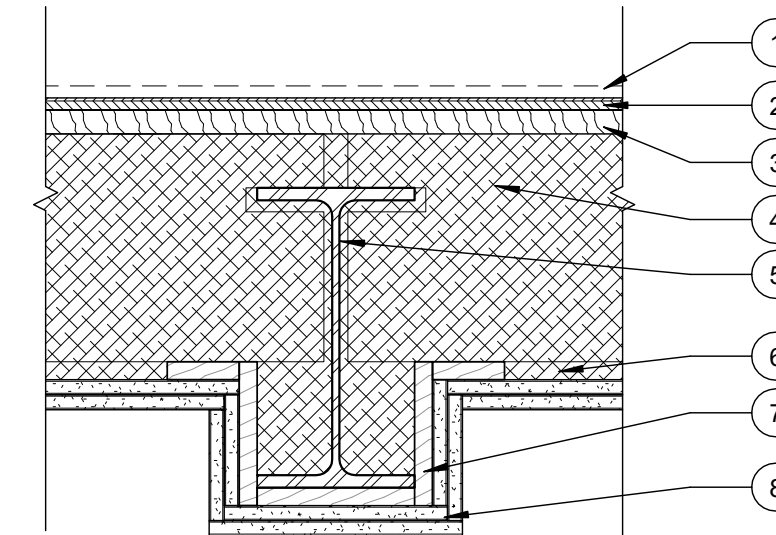


1 HR RATED CEILING/FLOOR ASSEMBLY
 NEW GYPSUM BOARD CEILING ADDED = 1 HR
 (BASED ON GA FILE NOS. FC 5406 AND RC 2601)

1. FINISH FLOORING - SEE FINISH SCHEDULE
2. SUBFLOORING - 1" HARDWOOD RUNNING PERPENDICULAR TO JOISTS
3. WOOD JOISTS - 2X10 WOOD JOISTS @ 16" O.C.
4. PLASTER - EXISTING 1" PLASTER ON WOOD LATH
5. CELLULOSE - BLOWN CELLULOSE IN EXISTING CAVITIES
6. GYPSUM BOARD - NEW (2) LAYERS 5/8" TYPE X GYPSUM WALL BOARD APPLIED AT RIGHT ANGLES TO JOISTS. BASE LAYER APPLIED WITH TYPE W OR S DRYWALL SCREWS. FACE LAYER APPLIED WITH 1 7/8" TYPE W OR S DRYWALL SCREWS. FACE LAYER JOINTS OFFSET 24" FROM BASE LAYER JOINTS. GYPSUM BOARD APPLIED IN ROOMS WHERE PLASTER IS REMOVED.
7. TAPE AND COMPOUND - (NOT SHOWN) VINYL DRY OR PREMIXED JOINT COMPOUND, APPLIED IN TWO COATS TO JOISTS AND SCREW HEADS. PAPER TAPE, 2 IN. WIDE, EMBEDDED IN FIRST LAYER OF COMPOUND OVER ALL JOISTS.

2 | F2 - EXISTING FIRST AND SECOND FLOOR ASSEMBLY

1 1/2" = 1'-0"

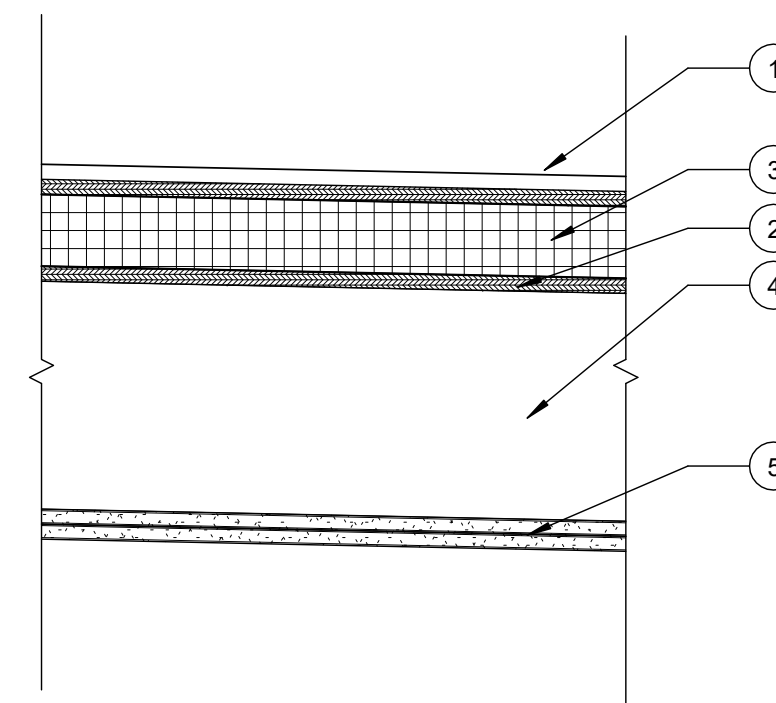


1 HR RATED CEILING/FLOOR ASSEMBLY
 NEW GYPSUM BOARD CEILING ADDED = 1 HR
 BASED ON GA FILE NOS. FC 5406 AND RC 2601

1. FINISH FLOOR - SEE FINISH SCHEDULE
2. SUBFLOORING - EXISTING 1/2" PLYWOOD
3. SUBFLOORING - EXISTING 1" HARDWOOD RUNNING PERPENDICULAR TO JOISTS
4. WOOD JOISTS - EXISTING NOM. 2X10 WOOD JOISTS @ 16" O.C. NOTCHED INTO STEEL BEAMS
5. BEAM - EXISTING STEEL BEAM NOTCHED IN MASONRY WALLS
6. STRAPPING - EXISTING 3/4" STRAPPING RUNNING PERPENDICULAR TO JOISTS 16" O.C.
7. BLOCKING - EXISTING 3/4" WOOD BLOCKING AROUND BEAM
8. GYPSUM BOARD - NEW (2) LAYERS 5/8" TYPE X GYPSUM WALL BOARD APPLIED AT RIGHT ANGLES TO JOISTS. BASE LAYER APPLIED WITH TYPE W DRYWALL SCREWS. FACE LAYER JOINTS OFFSET 24" FROM BASE LAYER JOINTS. GYPSUM BOARD APPLIED IN ROOMS WHERE PLASTER IS REMOVED
9. CELLULOSE - NEW BLOWN CELLULOSE IN EXISTING CAVITIES
10. TAPE AND JOINT COMPOUND - VINYL DRY OR PREMIXED JOINT COMPOUND, APPLIED IN TWO COATS TO JOISTS AND SCREW HEADS. PAPER TAPE, 2 IN. WIDE, EMBEDDED IN FIRST LAYER OF COMPOUND OVER ALL JOISTS.

1 | F1 - EXISTING FIRST FLOOR ASSEMBLY IN KITCHEN, QUEEN G AND KING F

1 1/2" = 1'-0"

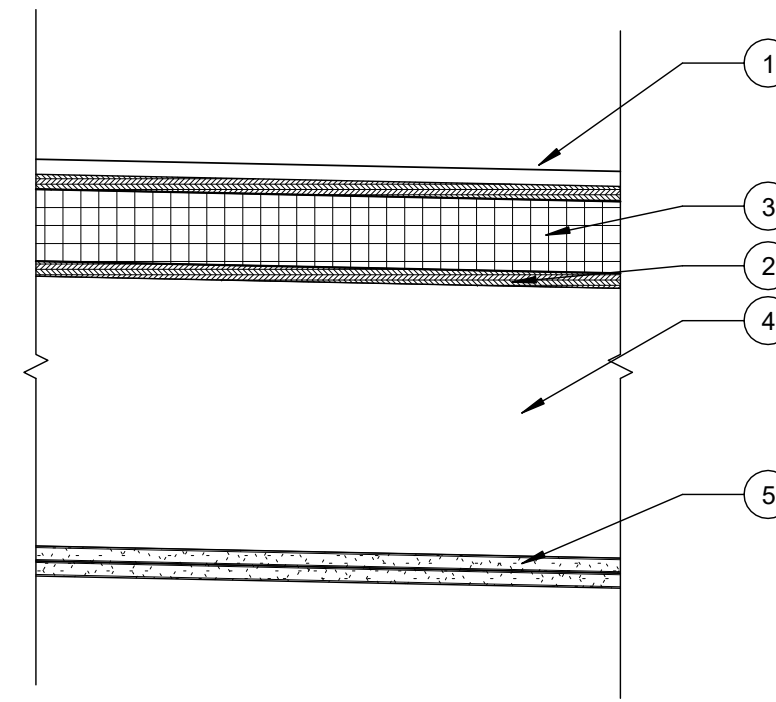


1 HR RATED CEILING/ROOF ASSEMBLY
 (BASED ON GA FILE NO. 5406)

1. EPDM ROOF MEMBRANE - FULLY ADHERED EPDM MEMBRANE
2. SHEATHING - RUNNING PERPENDICULAR TO RAFTERS
3. RIGID INSULATION - HD COVERBOARD ON 3" RIGID INSULATION
4. RAFTERS - 2X10 RAFTERS SPACED 16" O.C. SLOPED 1/4" PER FOOT
5. GYPSUM BOARD - TWO LAYERS OF 5/8" TYPE X GYPSUM WALLBOARD APPLIED AT RIGHT ANGLES TO RAFTERS. FACE LAYER APPLIED WITH 1 1/4" TYPE W OR S DRYWALL SCREWS 24" O.C. FACE LAYER JOINTS OFFSET 24" FROM BASE LAYER JOINTS AND APPLIED WITH 1 7/8" TYPE W OR S DRYWALL SCREWS 12" O.C. AT JOINTS AND INTERMEDIATE JOISTS AND 1 1/2" TYPE G DRYWALL SCREWS 12" O.C. PLACED 2" BACK ON EITHER SIDE OF END JOINTS.
6. TAPE AND COMPOUND - (NOT SHOWN) VINYL DRY OR PREMIXED JOINT COMPOUND, APPLIED IN TWO COATS TO JOISTS AND SCREW HEADS. PAPER TAPE, 2 IN. WIDE, EMBEDDED IN FIRST LAYER OF COMPOUND OVER ALL JOISTS.

8 | R3 - THIRD FLOOR HALLWAY ADDITION ROOF

1 1/2" = 1'-0"

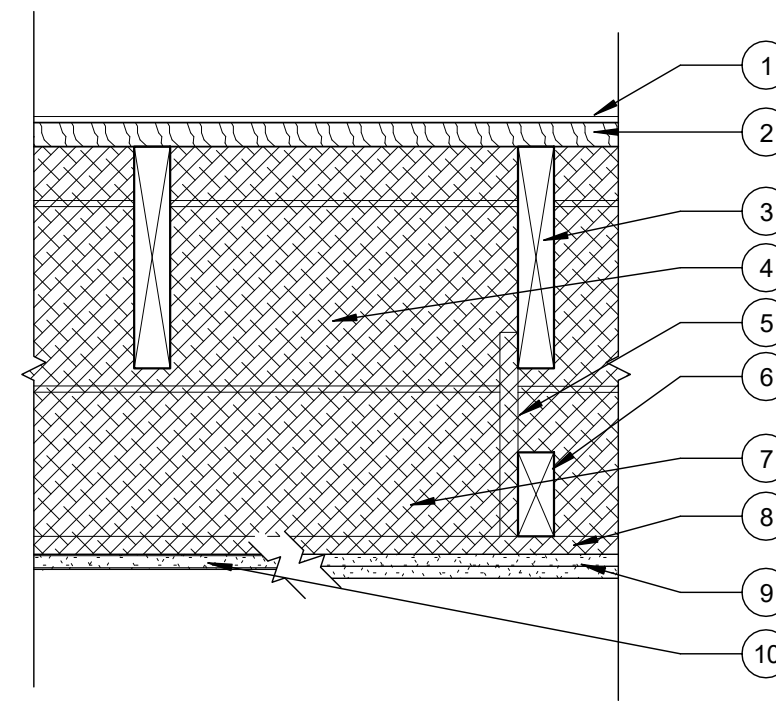


1 HR RATED CEILING/ROOF ASSEMBLY
 (BASED ON GA FILE NO. 5406)

1. EPDM ROOF MEMBRANE - FULLY ADHERED EPDM MEMBRANE
2. SHEATHING - RUNNING PERPENDICULAR TO RAFTERS
3. RIGID INSULATION - HD COVERBOARD ON 3" RIGID INSULATION
4. RAFTERS - 2X12 RAFTERS SPACED 16" O.C. SLOPED 1/4" PER FOOT
5. GYPSUM BOARD - TWO LAYERS OF 5/8" TYPE X GYPSUM WALLBOARD APPLIED AT RIGHT ANGLES TO RAFTERS. FACE LAYER APPLIED WITH 1 1/4" TYPE W OR S DRYWALL SCREWS 24" O.C. FACE LAYER JOINTS OFFSET 24" FROM BASE LAYER JOINTS AND APPLIED WITH 1 7/8" TYPE W OR S DRYWALL SCREWS 12" O.C. AT JOINTS AND INTERMEDIATE JOISTS AND 1 1/2" TYPE G DRYWALL SCREWS 12" O.C. PLACED 2" BACK ON EITHER SIDE OF END JOINTS.
6. TAPE AND COMPOUND - (NOT SHOWN) VINYL DRY OR PREMIXED JOINT COMPOUND, APPLIED IN TWO COATS TO JOISTS AND SCREW HEADS. PAPER TAPE, 2 IN. WIDE, EMBEDDED IN FIRST LAYER OF COMPOUND OVER ALL JOISTS.

7 | R2 - FIRST FLOOR ADDITION ROOF

1 1/2" = 1'-0"



UNRATED CEILING/FLOOR ASSEMBLY

1. EPDM ROOF MEMBRANE - NEW EPDM MEMBRANE ON EXISTING SHEATHING
2. SHEATHING - EXISTING RUNNING PERPENDICULAR TO JOISTS
3. WOOD JOISTS - EXISTING NOM. 2X10 WOOD JOISTS @ 16" O.C. NOTCHED INTO STEEL BEAMS BEYOND
4. BEAM - EXISTING STEEL BEAM NOTCHED IN MASONRY WALLS
5. HANGERS - EXISTING 3/4" WOOD HANGER ATTACHED TO EVERY OTHER JOIST 32" O.C.
6. RUNNERS - EXISTING NOM 2X4 WOOD RUNNERS SPACED 32" O.C.
7. INSULATION - NEW BLOWN CELLULOSE IN EXISTING CAVITIES
8. STRAPPING - EXISTING 3/4" STRAPPING 16" O.C.
9. GYPSUM BOARD - EXISTING 2 LAYERS NOM. 1/2" GYPSUM BOARD
10. GYPSUM BOARD - ONE LAYER NOM 5/8" GYPSUM WALL BOARD APPLIED AT RIGHT ANGLES TO JOISTS.
11. TAPE AND JOINT COMPOUND - (NOT SHOWN) VINYL DRY OR PREMIXED JOINT COMPOUND, APPLIED IN TWO COATS TO JOISTS AND SCREW HEADS. PAPER TAPE, 2 IN. WIDE, EMBEDDED IN FIRST LAYER OF COMPOUND OVER ALL JOISTS.

3 | R1 - EXISTING ADDITION ROOF SYSTEM

1 1/2" = 1'-0"