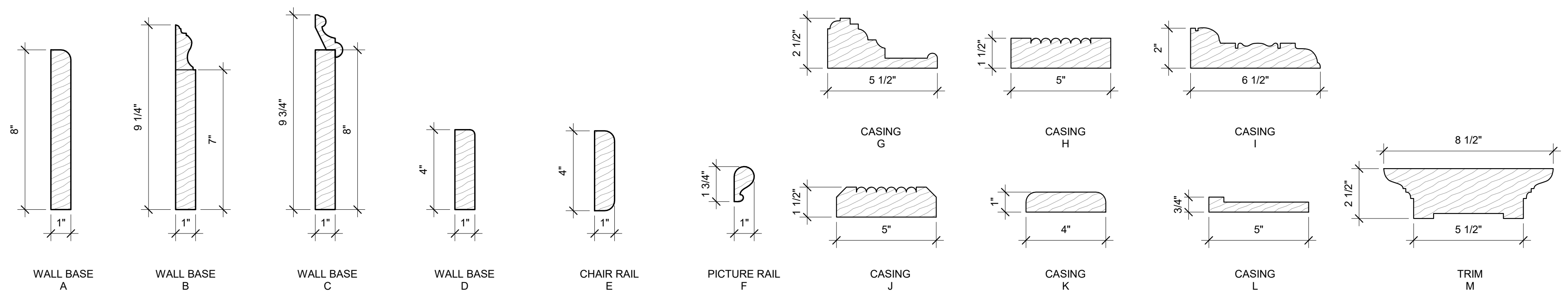
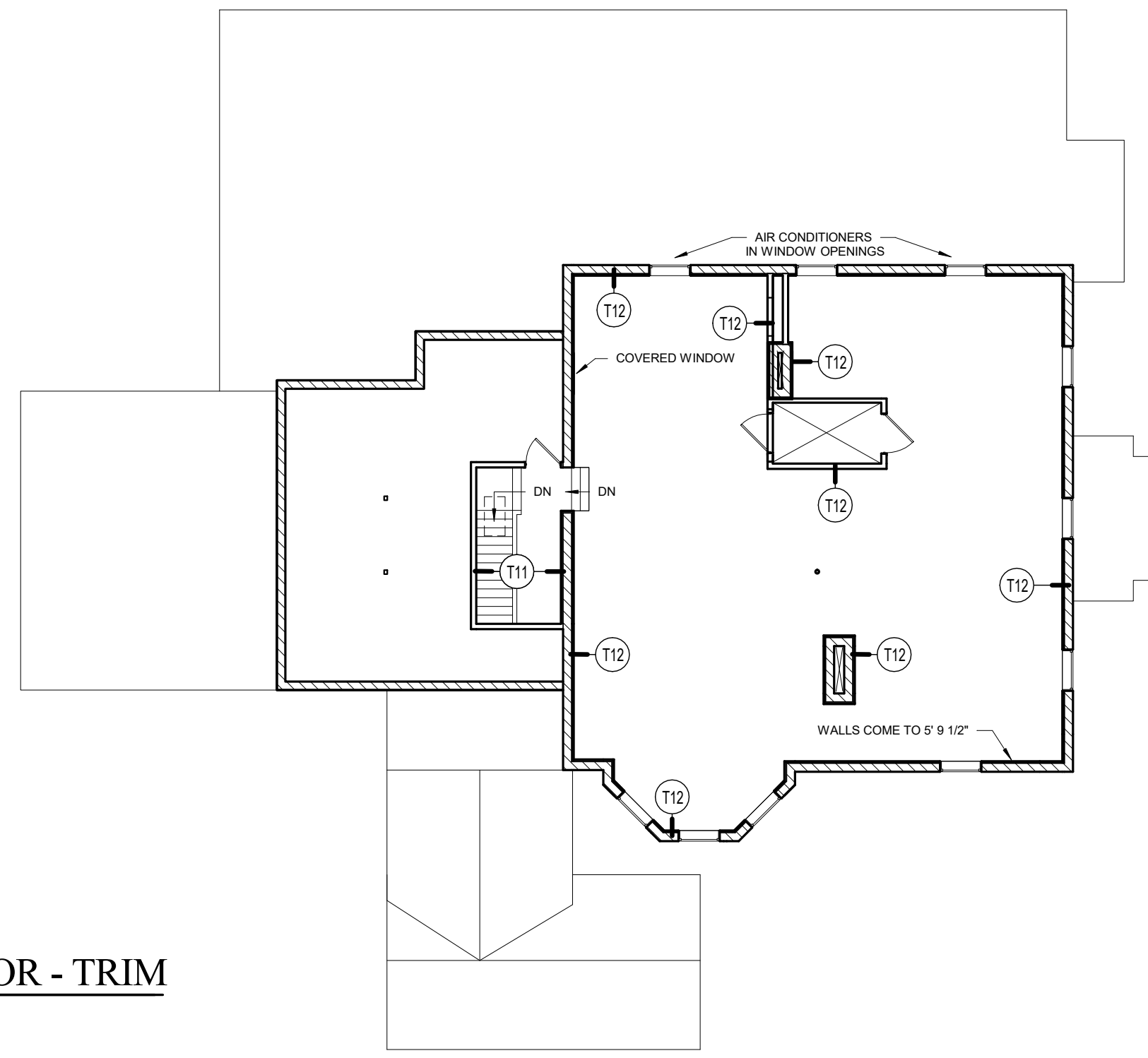


5 | HISTORIC TRIM ELEVATIONS
1/4" = 1'-0"

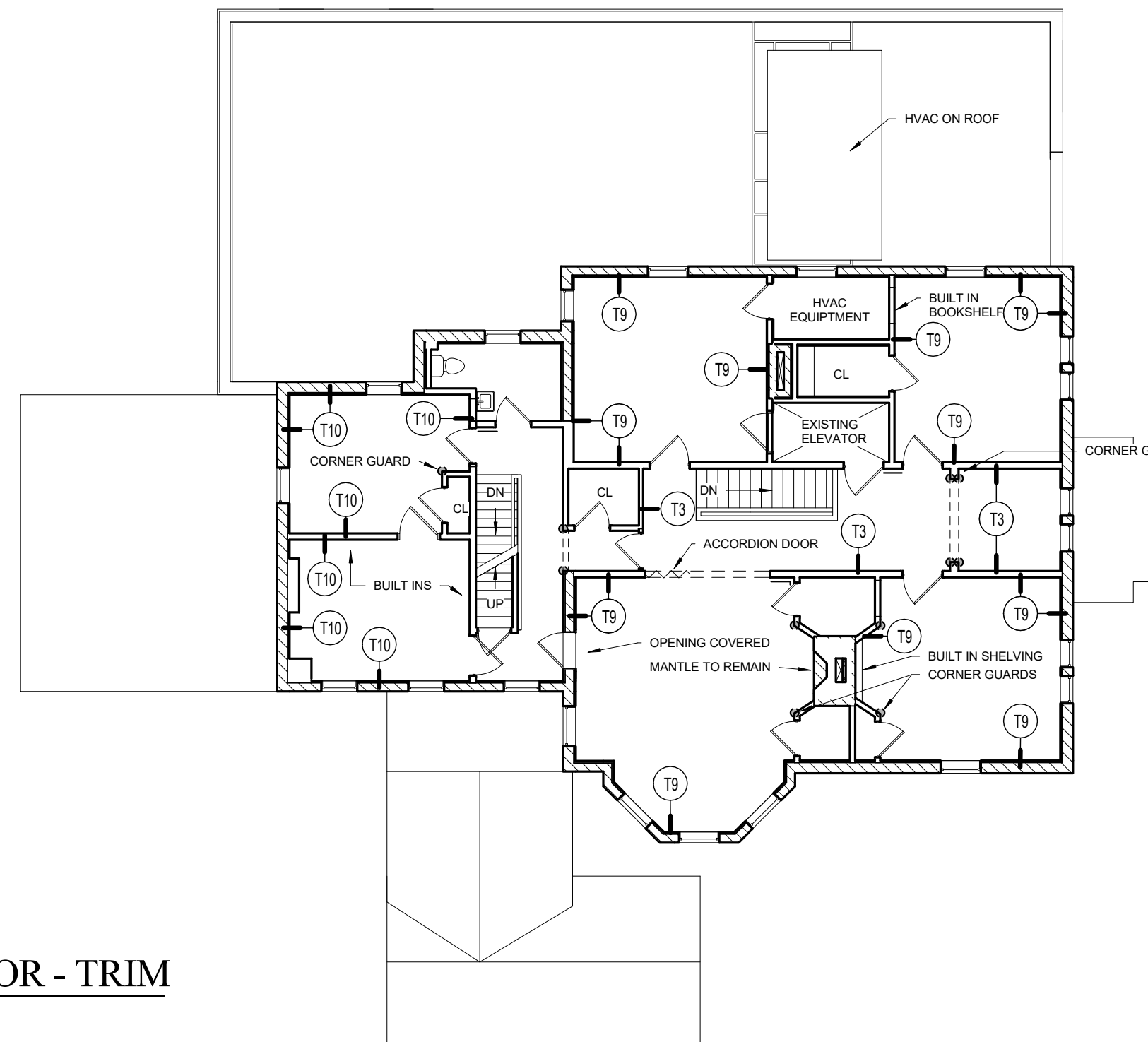


6 | Existing Trim Types
3" = 1'-0"

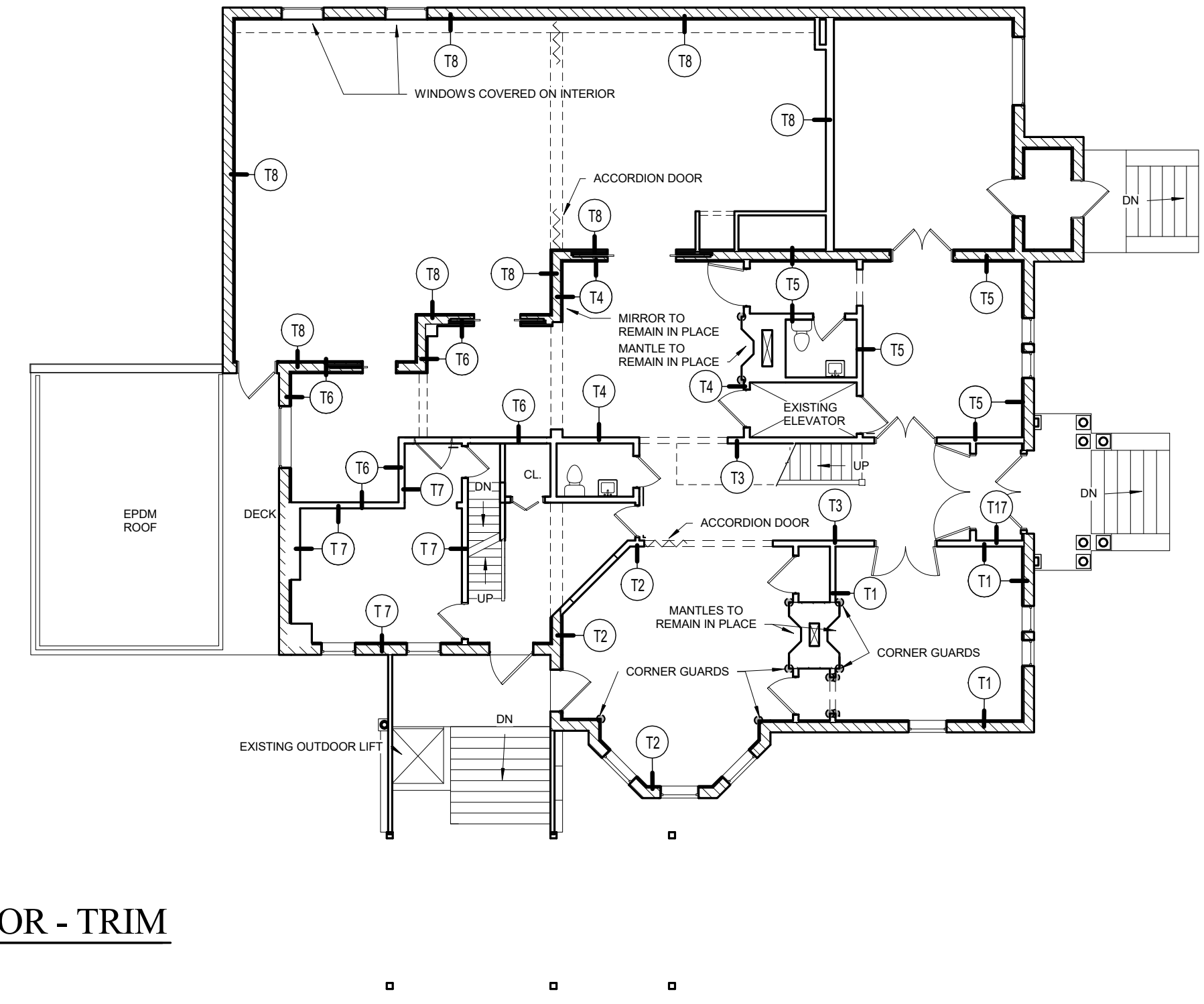
4 | 3RD FLOOR - TRIM
3/32" = 1'-0"



3 | 2ND FLOOR - TRIM
3/32" = 1'-0"



2 | 1ST FLOOR - TRIM
3/32" = 1'-0"



1 | GROUND FLOOR - TRIM
3/32" = 1'-0"

