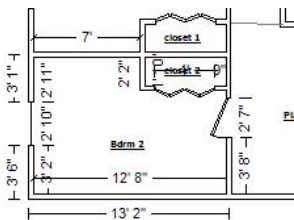


**757CONGESSSTREETCARR**
**Area Items: 757CONGESSSTREETCARR**

CAT	SEL CALC	ACT DESCRIPTION	QNTY	REMOVE	REPLACE	TOTAL
1. PNT	P+ 535	Paint the surface area - one coat - 2 colors	535.00 SF	0.00+	0.73 =	390.55
2. WDA	C++ 1	Aluminum window - casement, 6-8 sf - Premium grade	1.00 EA [*]	0.00+	834.00 =	834.00
3. MAS	BIDITM 1	Masonry Bid -Window Placement	1.00 EA [D]	0.00+	650.00 =	650.00

**Area Items Total: 757CONGESSSTREETCARR**
**1,874.55**

**Existing  
Main Level**


**Room: Bdrm 2**
**Height: 8'**

287.64 SF Walls	100.62 SF Ceiling
388.26 SF Walls & Ceiling	100.62 SF Floor
11.18 SY Flooring	36.57 LF Floor Perimeter
43.15 LF Ceil. Perimeter	

<b>Window</b>	<b>2' 10" X 4' 10"</b>	<b>Opens into Exterior</b>
<b>Door</b>	<b>2' 7" X 6' 8"</b>	<b>Opens into PLAY_AREA_RO</b>
<b>Door</b>	<b>4' X 6' 8"</b>	<b>Opens into CLOSET_2</b>

CAT	SEL CALC	ACT DESCRIPTION	QNTY	REMOVE	REPLACE	TOTAL
4. DRY	1/2MR+ W	1/2" mold resistant - hung, taped, floated ready for paint	287.64 SF	0.00+	1.81 =	520.63
5. MAS	BIDITM 1	Masonry Cutting in for egress windows KISC	1.00 EA [D]	0.00+	3500.00 =	3,500.00
6. PNT	P+ 535	Paint the surface area - one coat - 2 colors	535.00 SF	0.00+	0.73 =	390.55

**Room Totals: Bdrm 2**
**4,411.18**