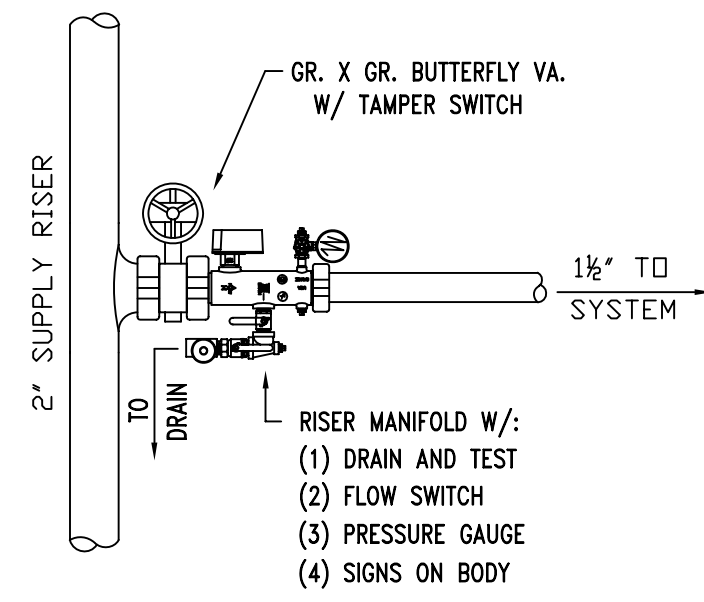
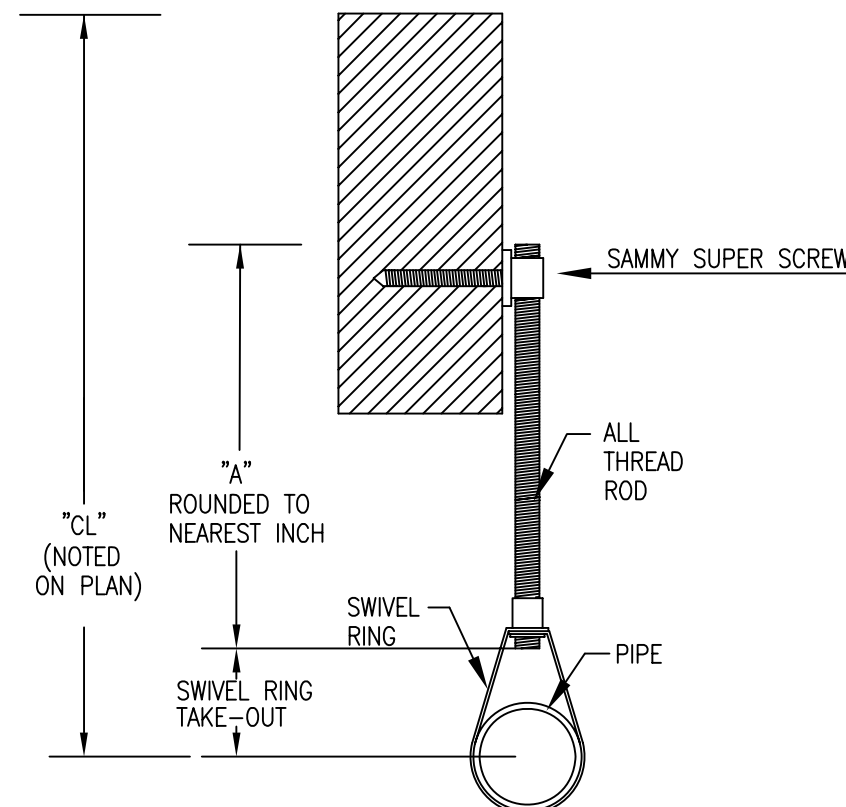


HYDRAULIC DESIGN DATA	
System # & Area	#1 - #3
No. of Sprinklers	4
Density	0.10 GPM
Designed Area	AREA
Hose Allowance	100 GPM
Water Flow Rate	186 GPM
Residual Pressure at Base of Riser	43 PSI
Safety Factor at Base of Riser	10.39 PSI

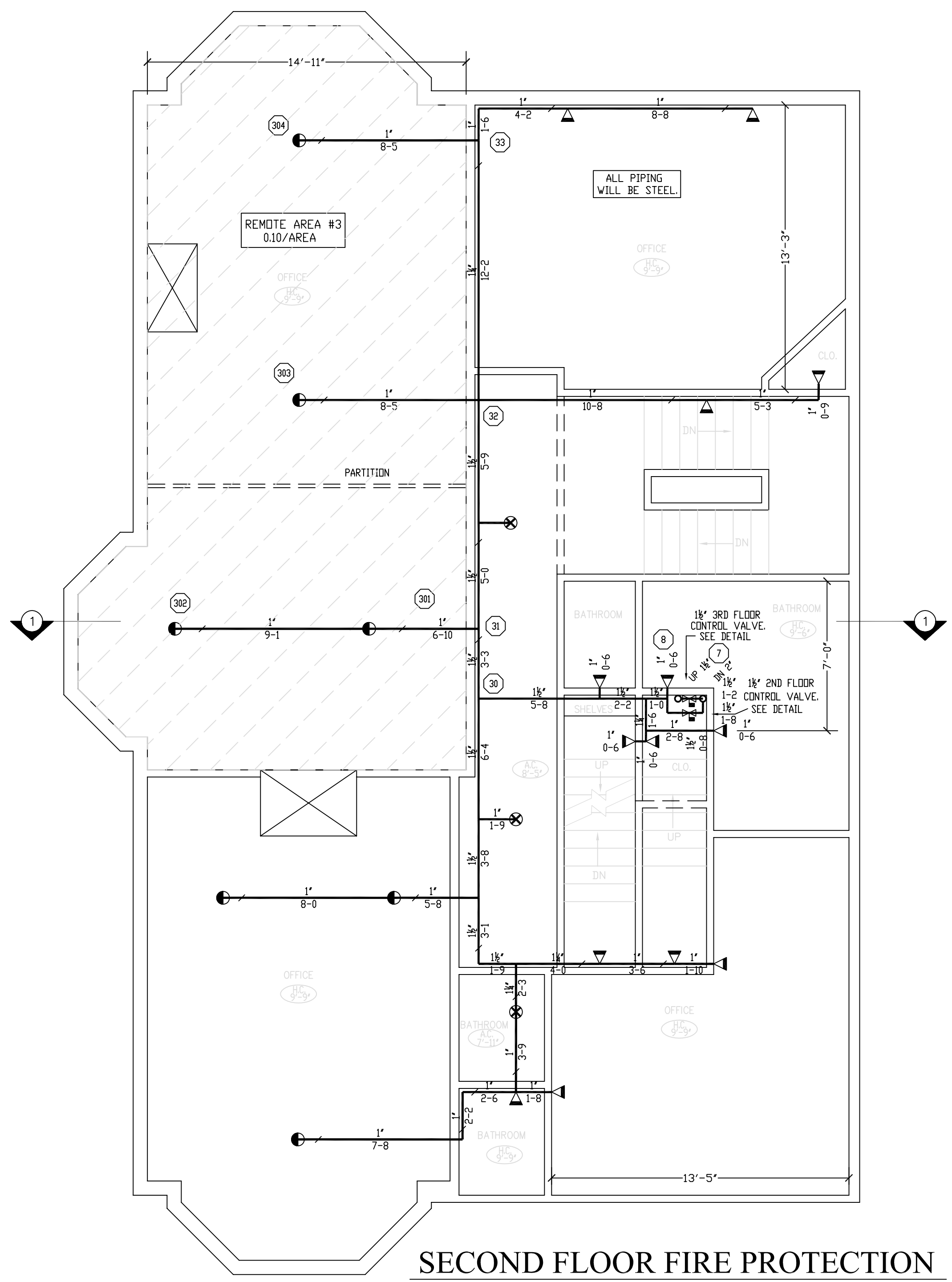


2ND & 3RD FLOOR CONTROL VALVES



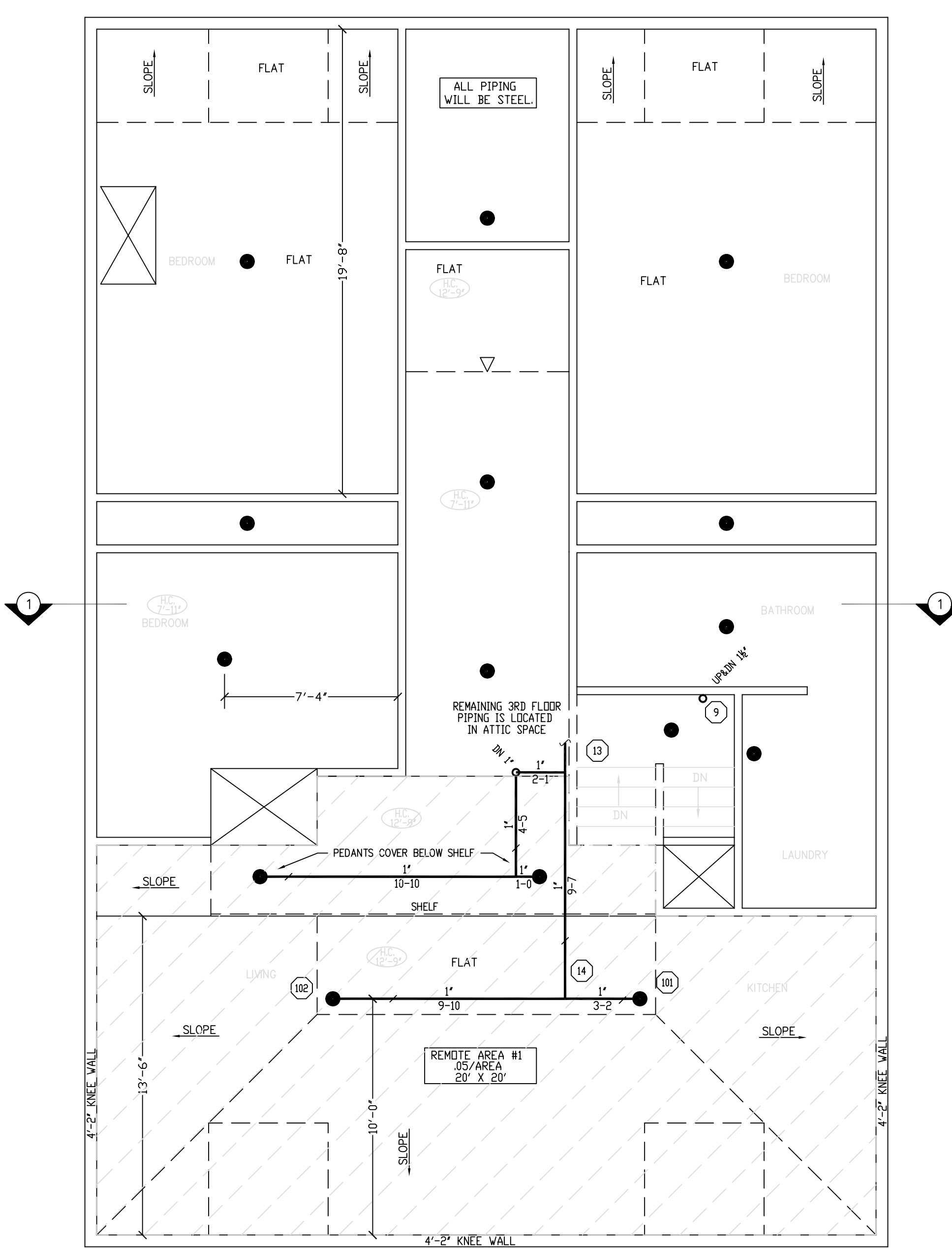
NOTE ON PLAN: "A" DIMENSION
PIPE SIZES 1" THROUGH 4" - ROD SIZE 3/8"
PIPE SIZES 5" THROUGH 8" - ROD SIZE 1/2"
TYPE #10 HANGER

HYDRAULIC DESIGN DATA	
System # & Area	#1 - #2
No. of Sprinklers	4
Density	0.10 GPM
Designed Area	AREA
Hose Allowance	100 GPM
Water Flow Rate	195 GPM
Residual Pressure at Base of Riser	47 PSI
Safety Factor at Base of Riser	5.86 PSI



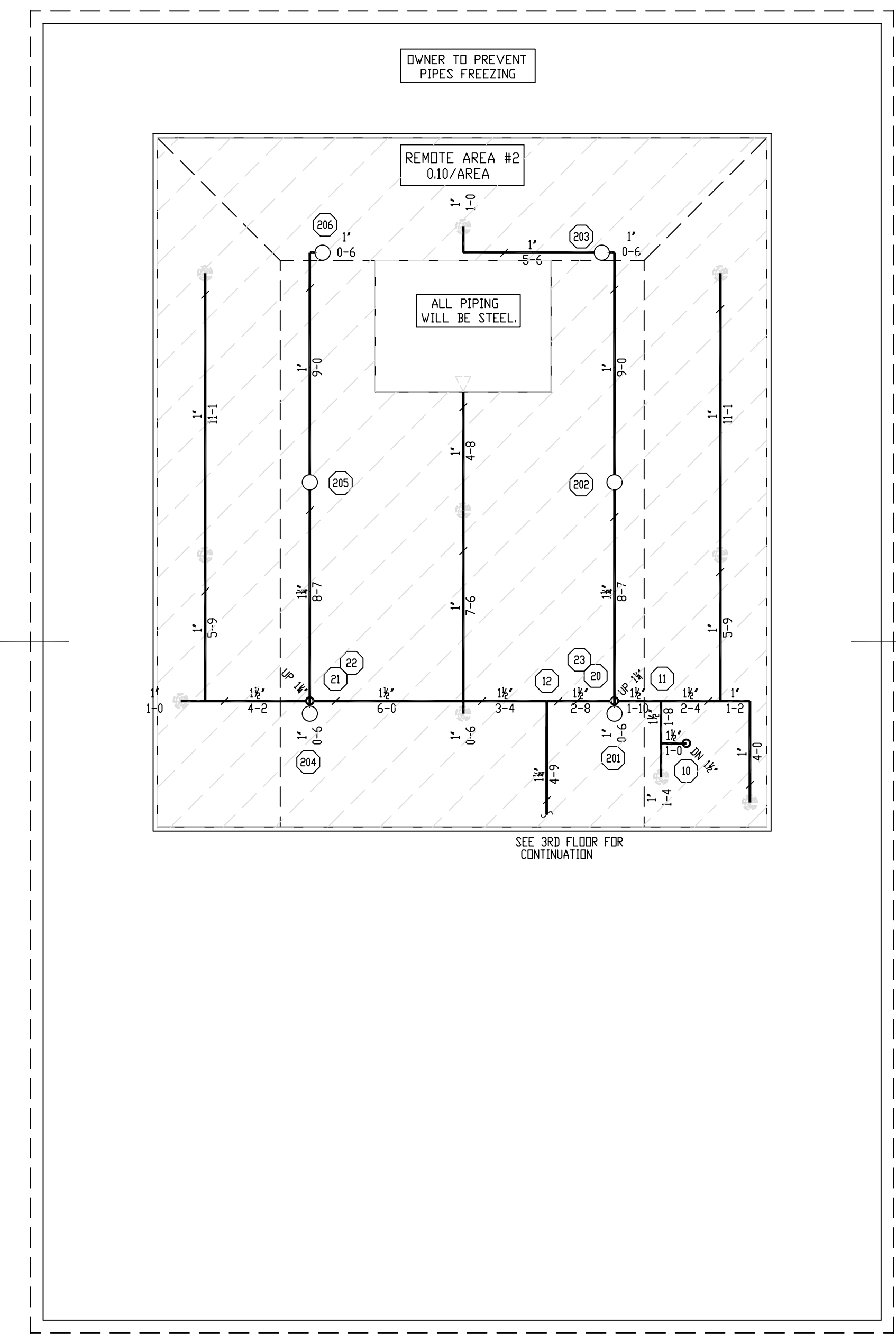
SECOND FLOOR FIRE PROTECTION

SCALE 1/4"=1'-0"
QUANTITY ⊗ = 3
QUANTITY ⊙ = 7
QUANTITY ◁ = 14



THIRD FLOOR FIRE PROTECTION

SCALE 1/4"=1'-0"
QUANTITY ● = 15
QUANTITY ◁ = 1



THIRD FLOOR CORE ATTIC FIRE PROTECTION

SCALE 1/4"=1'-0"
QUANTITY ⊙ = 6
⊙ (SEE 3RD FLOOR PLAN FOR LOCATION)

HYDRAULIC DESIGN DATA	
System # & Area	#1 - #1
No. of Sprinklers	2
Density	0.05 GPM
Designed Area	AREA
Hose Allowance	N/A
Water Flow Rate	40 GPM
Residual Pressure at Base of Riser	42 PSI
Safety Factor at Base of Riser	12.43 PSI

REVISIONS	NOTES	SPRINKLER TYPE	IDENTIFICATION NO.	MFG.	ESC.	MODEL	FINISH	ORIFICE	TEMP.	SYMBOL	QUANT.
	K=5.6 UPRIGHT SPRINKLER COVERAGE: 15'X15'	QUICK RESP. UPRIGHT K= 5.6	TY3131	TYCD	N/A	TY-FRB	BRASS	1/2"	212°	⊙	6
	K=4.9 PENDANT SPRINKLER COVERAGE: 20'X20'	QUICK RESP. PENDANT K= 5.6	TY3231	TYCD	2 PIECE	TY-FRB	WHITE	1/2"	155°	⊙	3
	K=4.4 SIDEWALL SPRINKLER COVERAGE: 14'X14'	QUICK RESP. PENDANT K= 5.6	TY3231	TYCD	N/A	TY-FRB	WHITE	1/2"	155°	⊙	7
		QUICK RESP. PENDANT K= 4.9	TY2524	TYCD	CONCEALED	LFII	WHITE	1/2"	155°	●	15
		QUICK RESP. SIDEWALL K= 5.6	TY3331	TYCD	N/A	TY-FRB	WHITE	1/2"	155°	◁	14
		QUICK RESP. SIDEWALL K= 4.4	TY2334	TYCD	2 PIECE	LFII	WHITE	1/2"	155°	◁	1
		TOTAL SPRINKLERS THIS DRAWING									46

767 CONGRESS STREET
PORTLAND, MAINE 04102

FIRE PROTECTION PLAN

FREEDOM FIRE PROTECTION, INC.
209 QUAKER RIDGE ROAD
CASCO, MAINE 04015

JOB No.	M0168
DATE	5/8/14
DRAWN BY	MJN
SCALE	AS NOTED
SHEET No.	FP-3of3