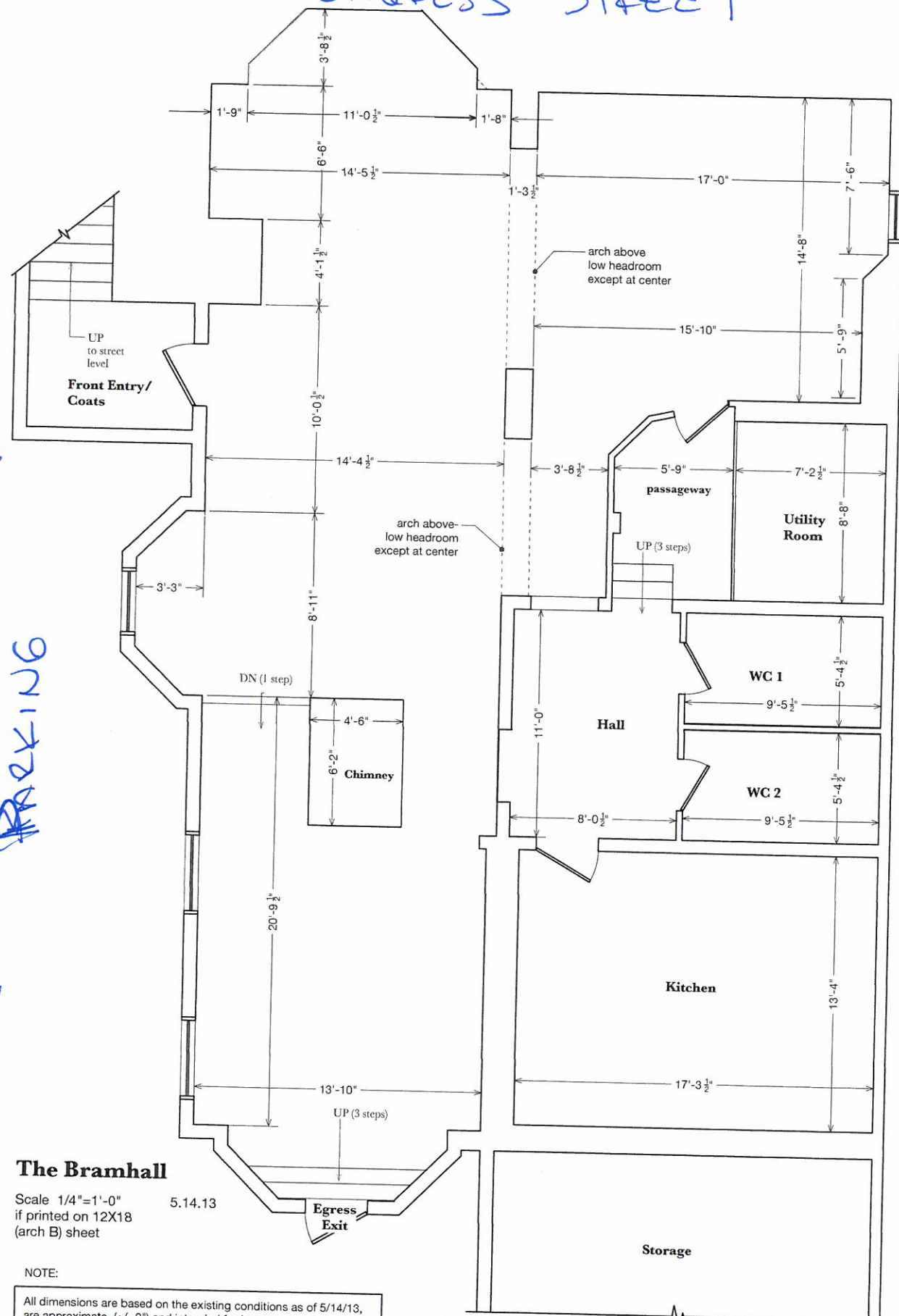


CONGRESS STREET

DRIVEWAY TO PARKING



BUILDING 773 CONGRESS STREET

The Bramhall

Scale 1/4"=1'-0"
 5.14.13
 if printed on 12X18
 (arch B) sheet

NOTE:

All dimensions are based on the existing conditions as of 5/14/13, are approximate (+/- 2") and intended for layout use and shall be verified in the field by the builder before construction begins.

PLOT PLAN

8 PARKING SPOTS