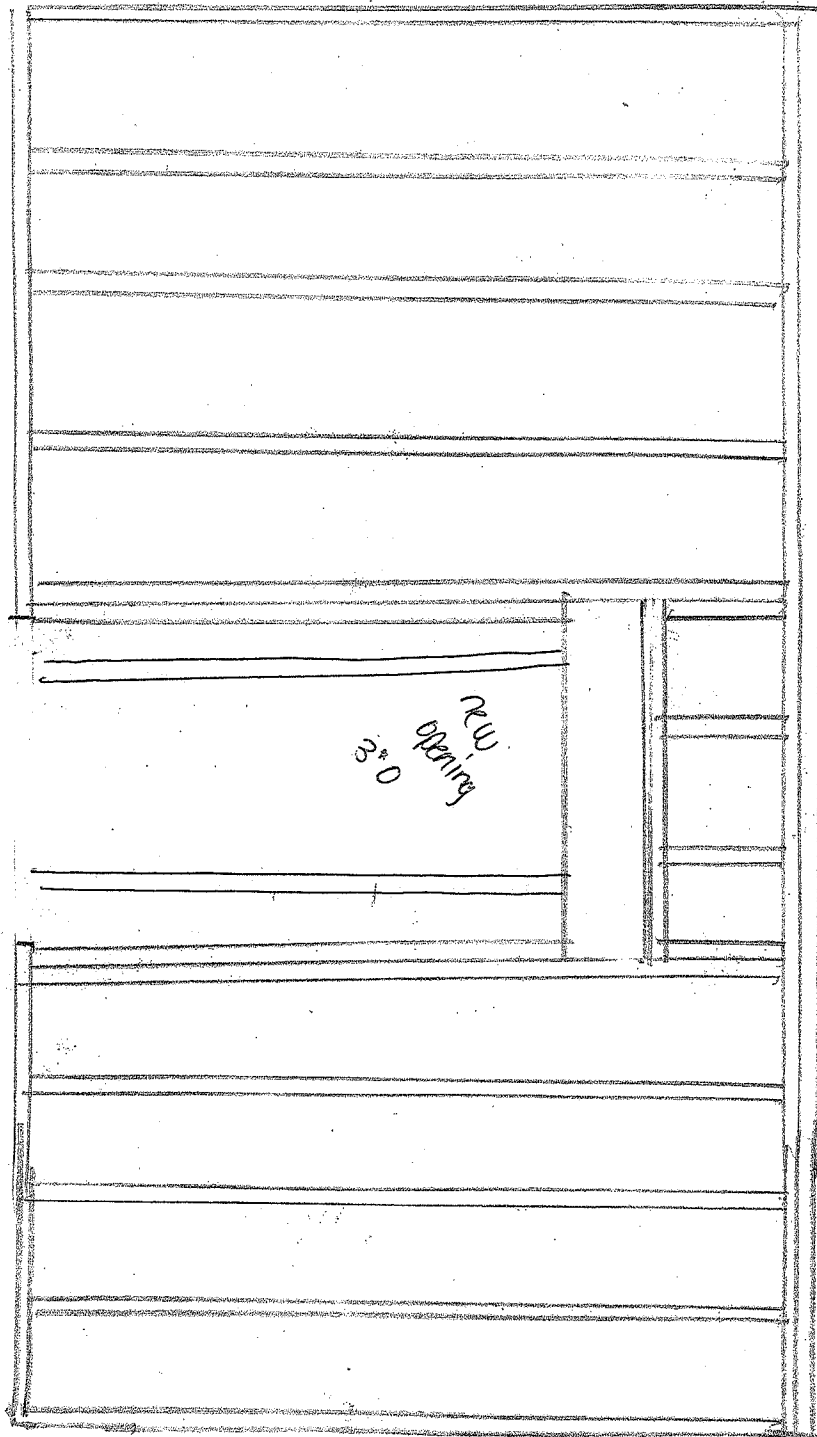


773 longress entrance door to office
 Removing wood door 4'0" Replacing with 90 min fire door 3'0"

2x6 Double
 top plate
 2x4 wall
 studs 16 o.c.
 2x8 Header
 over 3'0" door
 over 6'8" door



4'0" current opening, Reducing to accommodate 3'0" x 6'8" 90 min fire door, adding 2x4 (highlighted above) on each side of new door covering with 5/8" drywall. Existing wall is 2x4 with lath & plaster.