

GEN. BLDG. DATA			NO.	LINE	STR. CODE	FLAT +/-	MEASUREMENT 1	MEASUREMENT 2	IDENT. UNITS	COST	% GOOD	NO.	LINE	STR. CODE	FLAT +/-	MEASUREMENT 1	MEASUREMENT 2	IDENT. UNITS	COST	% GOOD	
1	910±005		601	3	RP2		9	18	01			605									
0G	YR BUILT	NO. UNITS	602	3	RP2		4	6	01			606									
09	C	01	603	3	RP5		5	12	01			607									
1UCT.	COST MODIFIER	NO. IDENT. UNITS	604									608									

609 APARTMENT DATA	
EFF.	005 1 BR
2 BR	3 BR

610 PARKING DATA	
COV.	0 UNCOV.

**INTERIOR - EXTERIOR DATA**

SEC. NO.	LEVELS		DIMENSIONS				USE TYPE	WT	EXT. WLS	CONS. TYPE	NO.	INTER. FINISH	PTNS	HTG	AC	PLBG	SPRINK.	SF RATE	PHYS COND	FUNC UTIL FACT	AGE FACT	UNADJUSTED RCN	% GOOD	UNADJUSTED R C N
	FROM	TO	SIZE	PERIM.																				
1	01	01	984	124	071	0800	1				521	100	2	0	10	2	0		3	3				
1	01	01	432	54	081	0800	1				522	100	2	2	10	2	0		3	3				
1	01	01	1416	178	081	0902	1				523	100	2	2	10	2	0		3	3				
1	02	02	1416	178	081	0902	1				524	100	2	2	10	2	0		3	2				
1	03	03	1035	120	076	0902	1				525	100	2	2	10	2	0		3	3				
											526													
											527													
											528													

**TOTAL OTHER FEATURES & ATTACHED IMPROVEMENTS**

NO.	INTER. FINISH	PTNS	HTG	AC	PLBG	SPRINK.	SF RATE	PHYS COND	FUNC UTIL FACT	AGE FACT	UNADJUSTED RCN	% GOOD	UNADJUSTED R C N
521	100	2	0	10	2	0		3	3				
522	100	2	2	10	2	0		3	3				
523	100	2	2	10	2	0		3	3				
524	100	2	2	10	2	0		3	2				
525	100	2	2	10	2	0		3	3				

**STRUCTURE TYPE CODES**

- Apert. Garden 344 - Strip Shopping Cen.
- Apartment H.R. 345 - Disc. Dept. Stores
- Hotel/Motel, H.R. 346 - Dept. Stores
- Hotel/Motel, L.R. 347 - Supermarket
- Restaurant 348 - Conv. Food Market
- Fast Food 351 - Bank
- Auto Dealer, F.S. 352 - Savings Inst.
- Ser. Station (full) 353 - Office Building
- Ser. Station (self) 369 - Day Care Center
- Parking Gar/Deck 373 - Retail - single occ.
- Reg. Shop, Mall 396 - Mini Warehouse
- Cnty. Shop. Cen. 397 - Office/Warehouse
- Neigh. Shop. Cen. 398 - Warehouse

**USE TYPE CODES**

- 011 - Apartment
- 012 - Hotel
- 021 - Motel
- 025 - Dwelling Conv. Office
- 026 - Dwelling Conv. Sales
- 031 - Restaurant
- 032 - Dept. Store
- 033 - Disc. Store/Mkt.
- 034 - Retail Store
- 043 - Manufacturing
- 044 - Light Mfg.
- 045 - Warehouse
- 052 - Medical Cen.

**INTERIOR / EXTERIOR CODES**

**EXTERIOR WALL MATERIAL**

- 00 - None
- 01 - Brick or Stone
- 02 - Frame
- 03 - Conc. Block
- 04 - Brick & C.B.
- 05 - Tile
- 06 - Masonry & Frame

**HEATING SYSTEM**

- 0 - None
- 1 - Hot Air
- 2 - Hot Water/Steam
- 3 - Unit Heaters
- 4 - Electric
- 5 - Heat Pump
- 6 - Solar

**AIR CONDITION**

- 0 - None
- 1 - Central
- 2 - Unit

**SPRINKLER**

- 0 - None
- 1 - Wet
- 2 - Dry
- 3 - Other

**CONSTRUCTION TYPES PARTITIONS**

- 1 - Wood Joist (wd. & steel)
- 2 - Fire resistant (steel frame)
- 3 - Fireproof (rein. conc. frame)
- 4 - Light Steel

**PLBG/WATER**

- 0 - None
- 1 - Minimum
- 2 - Adequate
- 3 - Good

**% OF SPRINKLER**

- 1 - 1/4
- 2 - 1/2
- 3 - 3/4
- 4 - Full

**PHYSICAL CONDITION**

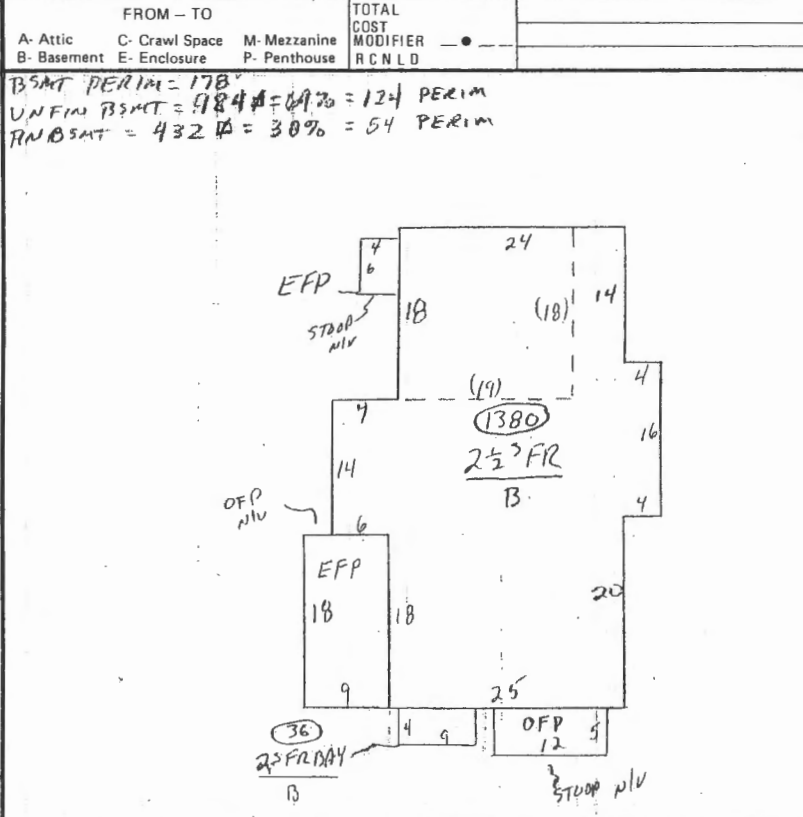
- 1 - Poor
- 2 - Fair
- 3 - Normal
- 4 - Good
- 5 - Rehabilitated

**FUNCTIONAL UTILITY**

- 0 - None
- 1 - Poor
- 2 - Fair
- 3 - Normal
- 4 - Good

**YARD & SECONDARY BUILDING STRUCTURE CODES**

- PA1 - Paving, Asp., Parking
- PA2 - Paving, Serv. Station
- PC1 - Paving, Conc. Parking (average)
- PC2 - Paving, Conc. Heavy Duty
- AP1 - Fence, Chainlink
- RR1 - Railroad Trackage
- CP5 - Canopy Only
- CP7 - Canopy, Serv. Sta. (economy)
- CP8 - Canopy, Serv. Sta. (average)
- CP9 - Canopy, Serv. Sta. (good)



**DELETE 701-706 YARD IMPROVEMENTS AND/OR SECONDARY BUILDINGS**

STR. CODE	FLAT +/-	DIMENSIONS SIZE	IDEN. UNIT	PHYS. COND	FUNC. UTIL.	YR. BLT.	% GO.	RCN	RCNLO
TOTAL									

**BUILDING OTHER FEATURES / ATTACHED IMPROVEMENTS - STRUCTURE CODES**

- 1 - Elev. Elect. Freight
- 2 - Elev. Elect. Pass.
- 3 - Elev. Hyd. Freight
- 4 - Elev. Hyd. Pass.
- LD1 - Ldg. Dock, Stl. or Conc.
- LD2 - Ldg. Dock, Wood
- LD3 - Ldg. Dock, Inter.
- LD4 - Truck or Train Well, Interior
- DL1 - Dock Level Floors
- 001 - O H Doors, Wd or Mtl
- 002 - O H Doors, Rolling Stl.
- EE1 - Enclosed Entry
- SF1 - Store Front, Wd. Frame
- SF2 - Store Front, Av. Mtl.
- SF3 - Store Front, Elaborate
- MS1 - Miscellaneous Structure