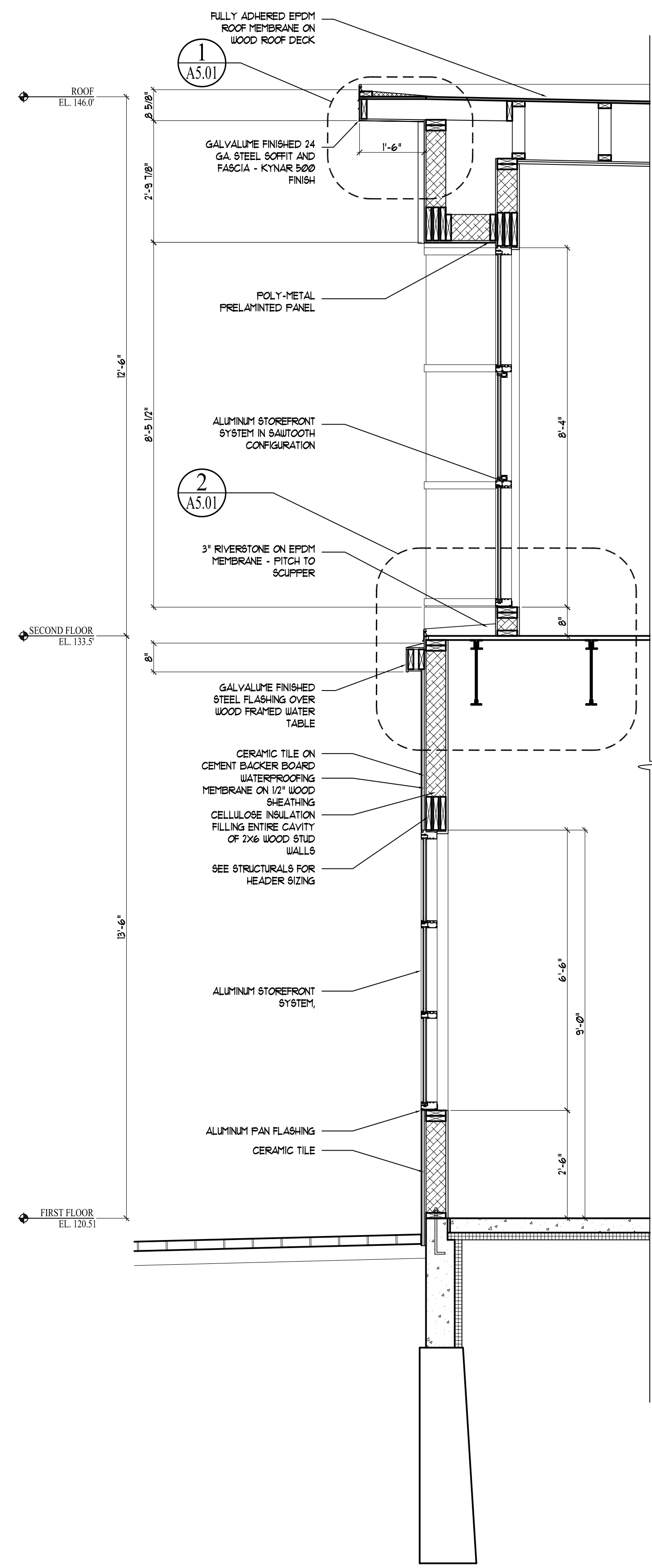
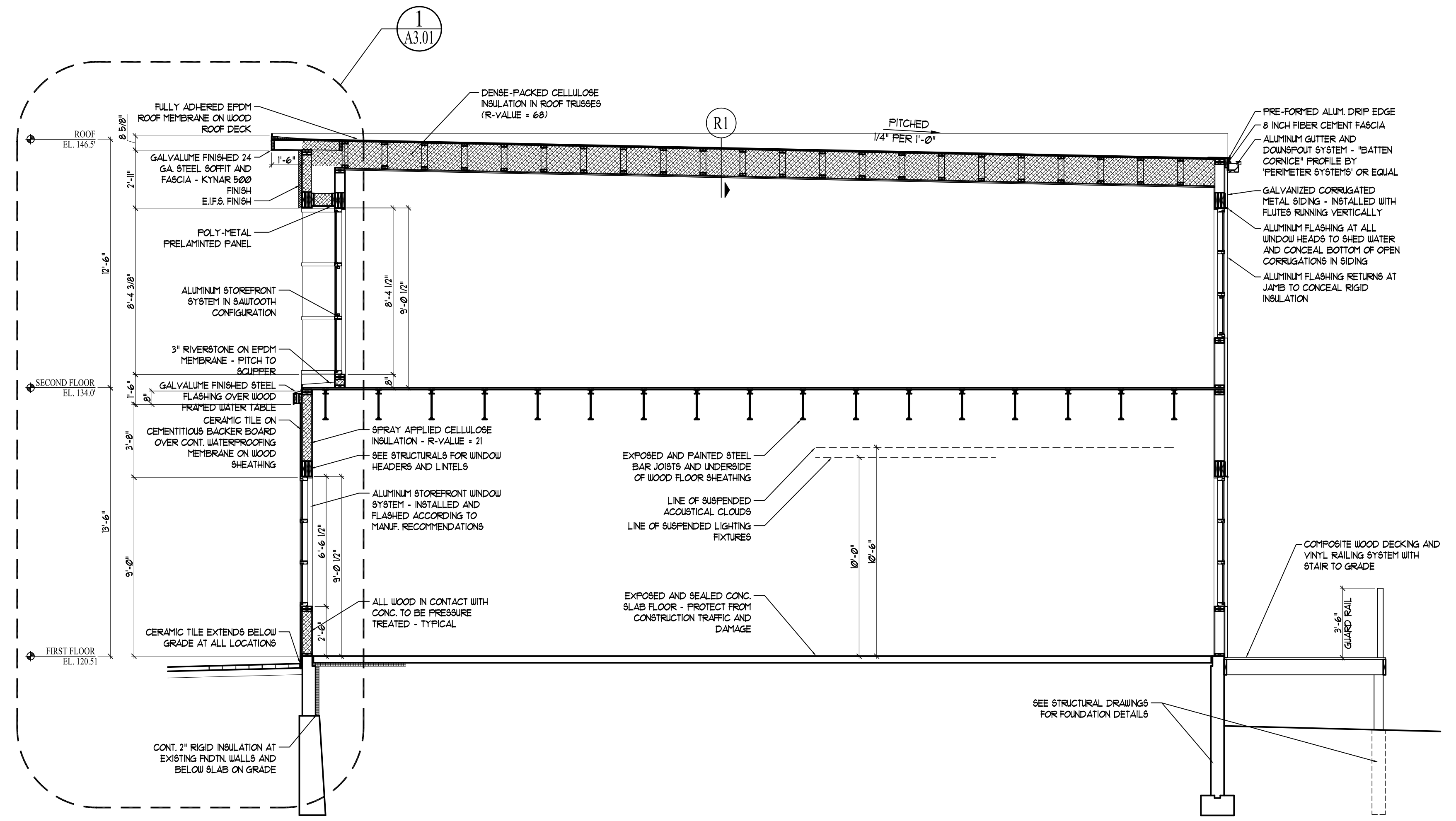


2 | WALL SECTION DETAIL
SCALE: 1/2"=1'-0"



1 | WALL SECTION DETAIL - CONGRESS STREET FACADE
SCALE: 1/2"=1'-0"



A | LONGITUDINAL BUILDING SECTION
SCALE: 1/4"=1'-0"

Prepared For:		RANDOM ORBIT, LLC	
Consulting Engineer:		ARCHETYPE architects 48 Union Wharf Portland, Maine 04101 (207) 772-6022 Fax (207) 772-4056	
Project:		PELTON BUILDING BRAMHALL SQUARE PORTLAND, ME	
Date:	Scale:	Revisions:	
23 July 2010	VARIABLES	Issued for Permit 23 July 2010	
BUILDING SECTION AND WALL SECTION			
A3.01			