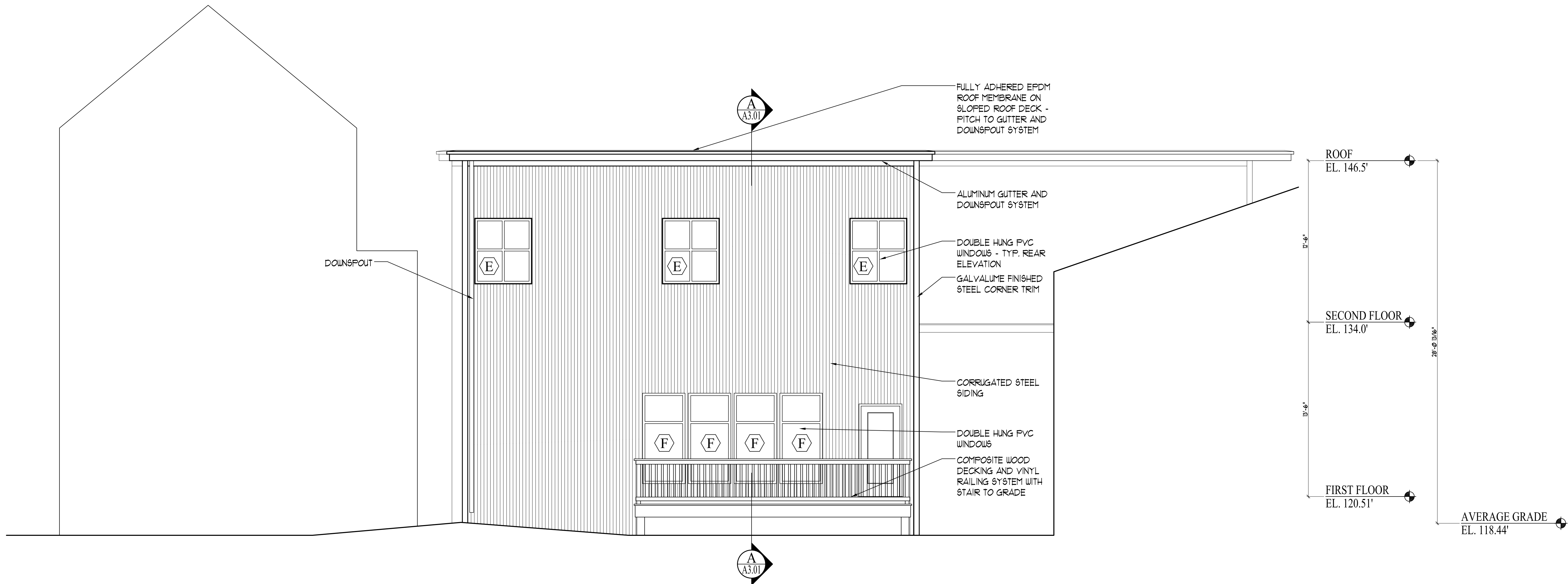


KEY PLAN - BRAMHALL SQUARE
SCALE: 1/32"=1'-0"



E NORTH SIDE ELEVATION
SCALE: 1/8"=1'-0"

Prepared For:
RANDOM ORBIT, LLC

17 Chestnut St
Portland, ME

Consulting Engineer:

ARCHETYPE
architects
48 Union Wharf Portland, Maine 04101
(207) 772-6022 Fax (207) 772-4056

Architect:

PELTON BUILDING
BRAMHALL SQUARE
PORTLAND, ME

Project:

Revisions:
Issued for Permit 23 July 2010

Scale:
1/8" = 1'-0"

Date:
23 July 2010

BUILDING ELEVATIONS

A2.03