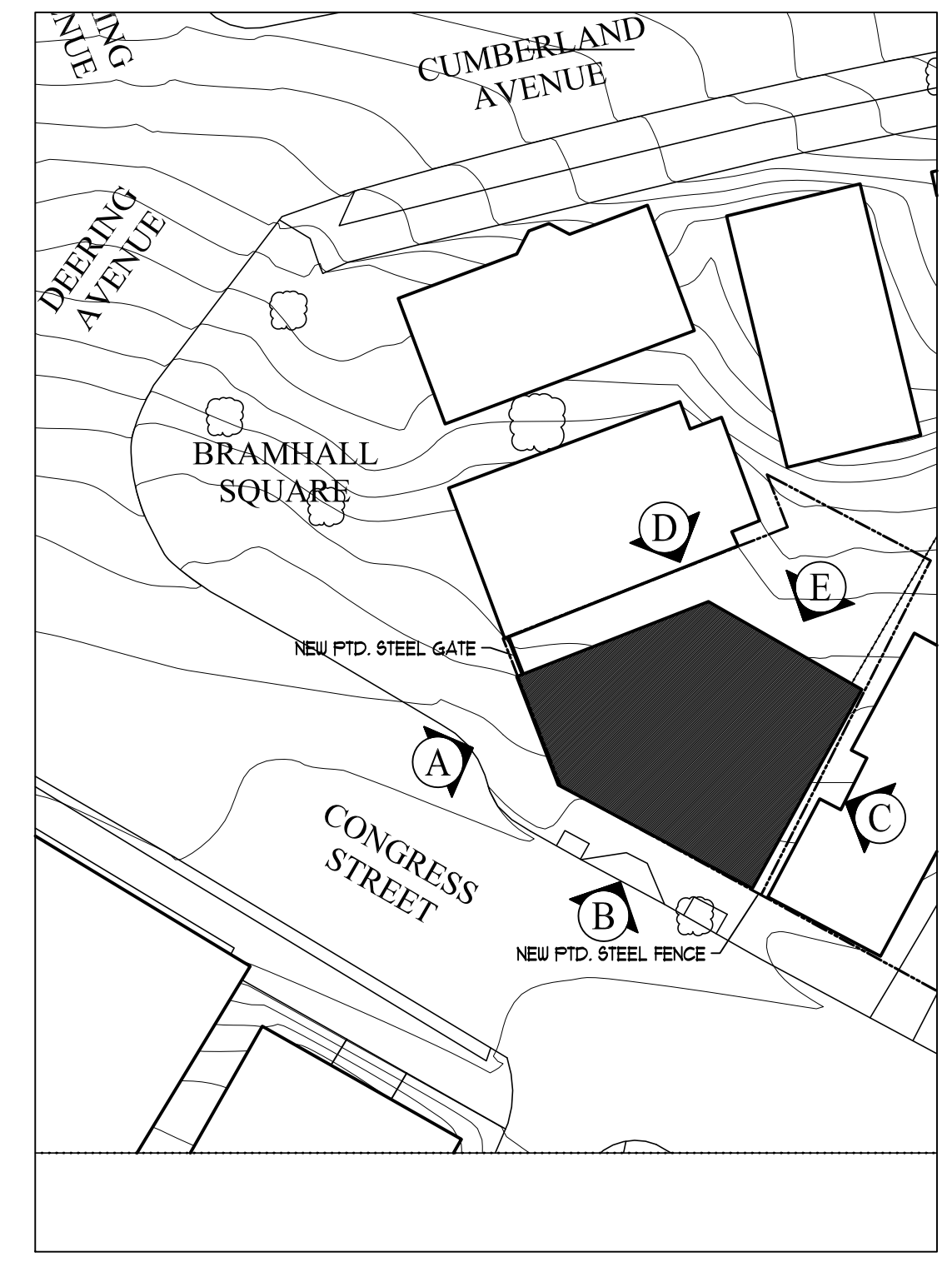


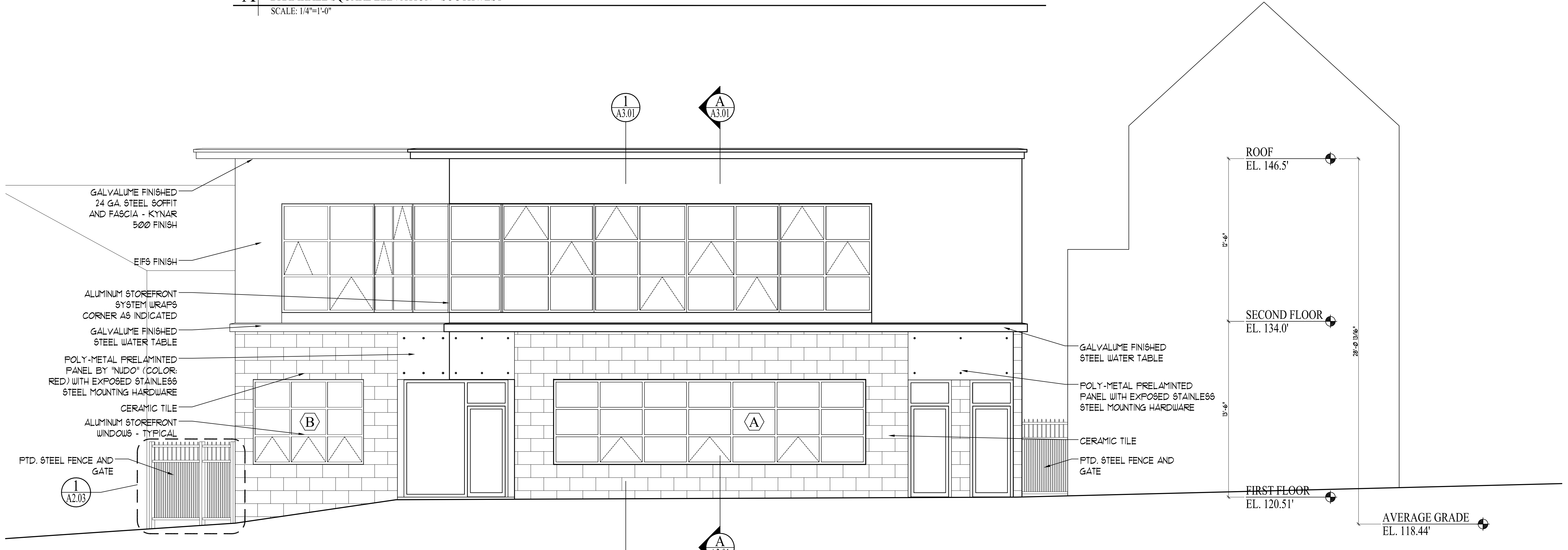
BUILDING HEIGHT BY DEFINITION: 5 CORNER AVERAGE GRADE-
 $120.2' + 119.8' + 118.1' + 117.6' + 116.5' = 592.2'$
 $592.2' / 5 = 118.44'$ AVERAGE
 27'-6-3/4" BUILDING HEIGHT



A BRAMHALL SQUARE ELEVATION - SOUTHWEST
 SCALE: 1/4"=1'-0"



1 KEY PLAN - BRAMHALL SQUARE
 SCALE: 1/32"=1'-0"



B CONGRESS STREET ELEVATION - SOUTH
 SCALE: 1/8"=1'-0"

Prepared For:
RANDOM ORBIT, LLC
 17 Chestnut St
 Portland, ME

Consulting Engineer:
ARCHETYPE architects
 48 Union Wharf Portland, Maine 04101
 (207) 772-6022 Fax (207) 772-4056

Project:
PELTON BUILDING
 BRAMHALL SQUARE
 PORTLAND, ME

Revisions:
 Issued for Permit 23 July 2010

Date: 23 July 2010
 Scale: 1/4" = 1'-0"
BUILDING ELEVATIONS

A2.01