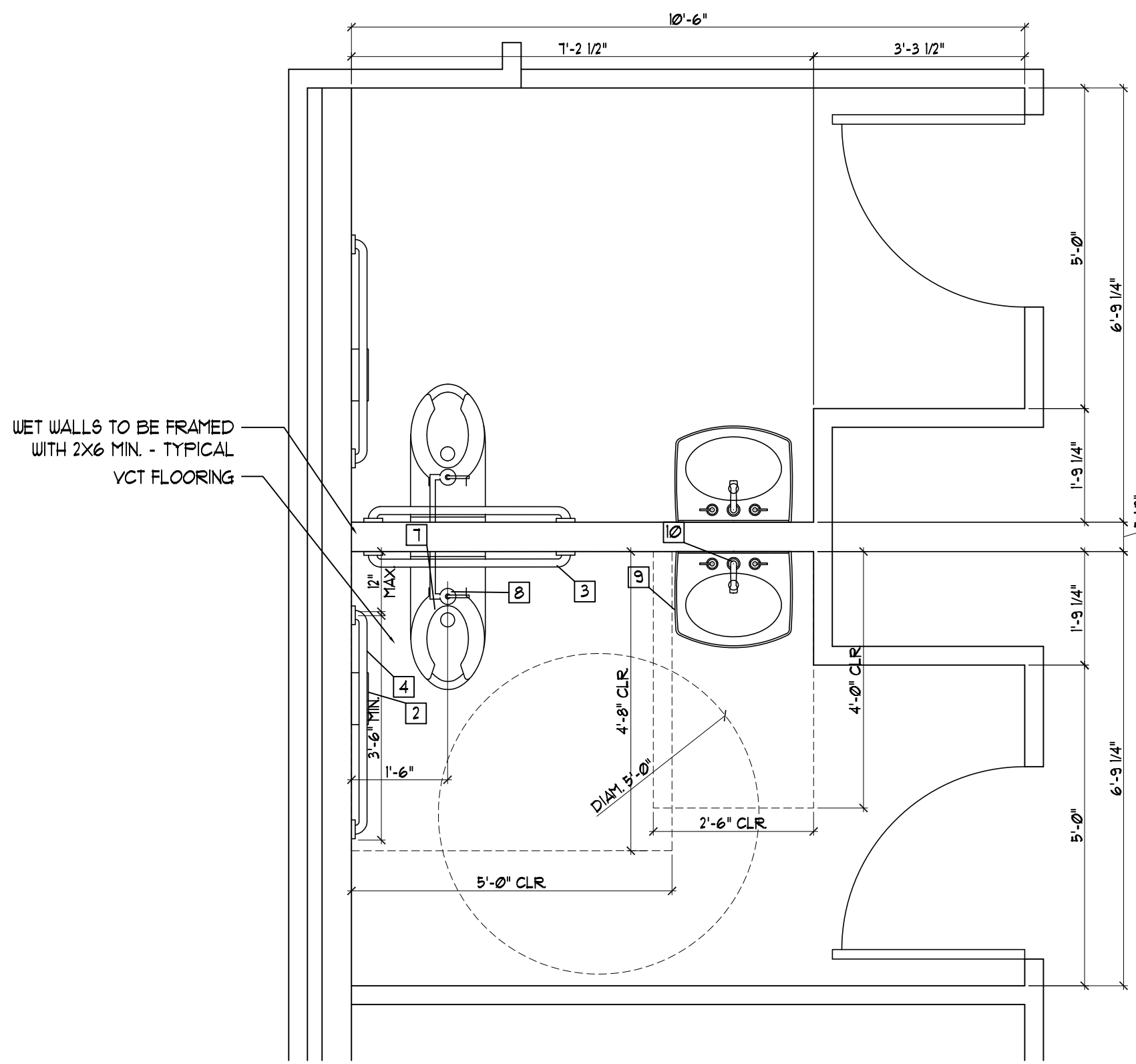
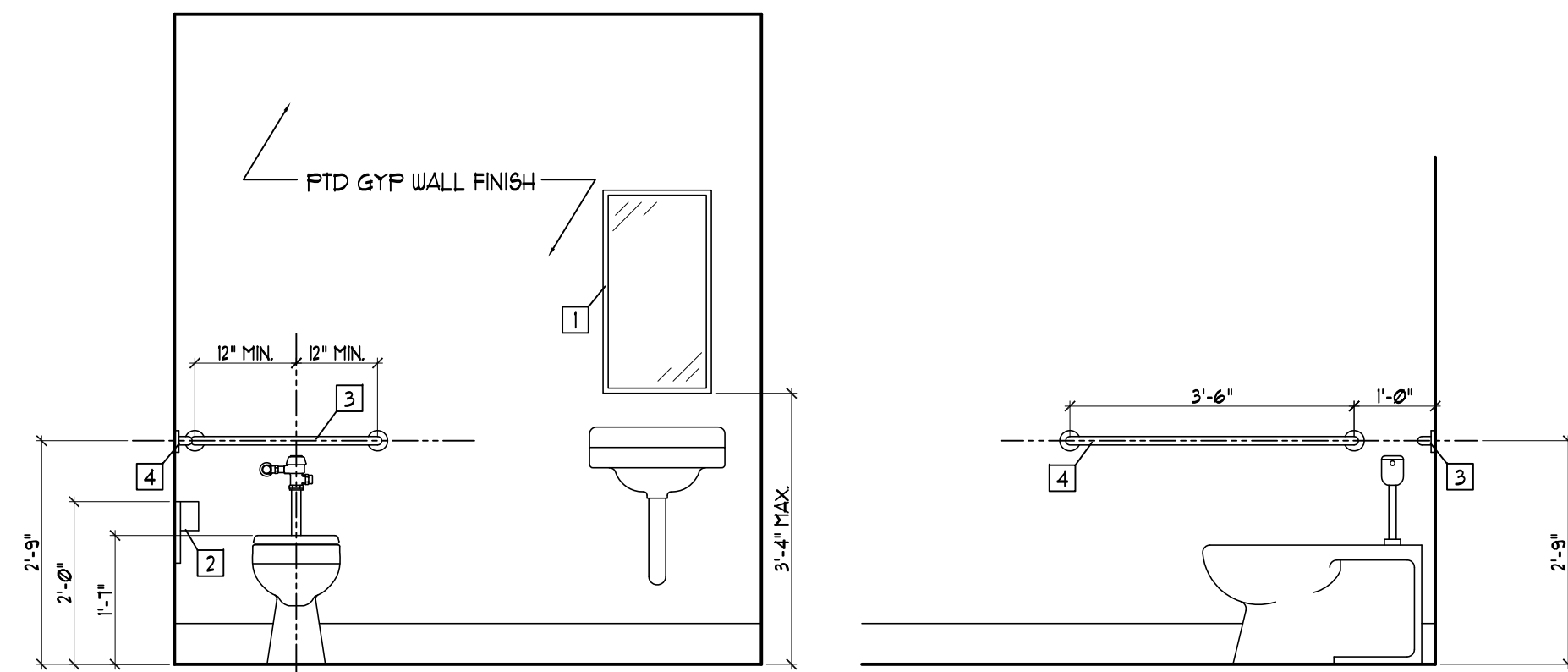


TOILET ROOM FIXTURES & ACCESSORIES

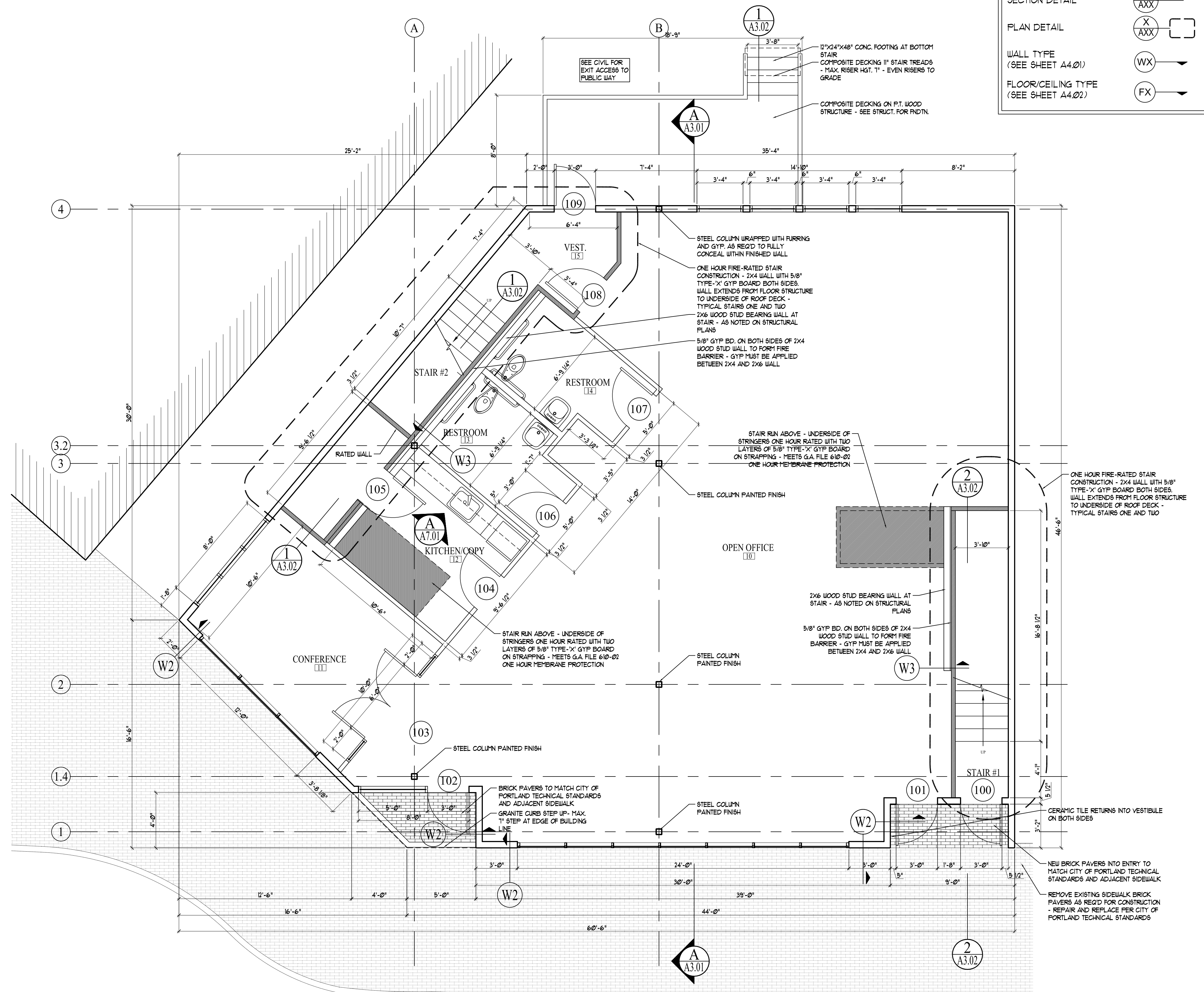
NO.	DESCRIPTION	STOCK NO.	LOCATION	REMARKS
1	SURFACE MOUNTED MIRROR	B-165 1830	TOILET RM.	BY BOBRICK / OWNER APPROVED EQUAL
2	SURFACE MOUNTED TISSUE DISPENSER	B-2888	TOILET RM.	BY BOBRICK / OWNER APPROVED EQUAL
3	36" GRAB BAR	B-550X36	TOILET RM.	BY BOBRICK / OWNER APPROVED EQUAL
4	42" GRAB BAR	B-550X42	TOILET RM.	BY BOBRICK / OWNER APPROVED EQUAL
	NOT USED			
	NOT USED			
7	MADERA 17" ELONGATED FLUSH VALVE TOILET	3043102	TOILET RM.	BY AMERICAN STANDARD / O.A.E.
8	ROYAL MODEL FLUSHOMETER	MODEL 110	TOILET RM.	BY BLOAN / OWNER APPROVED EQUAL
9	LUCERNE WALL HUNG LAVATORY	035502	TOILET RM.	BY AMERICAN STANDARD / O.A.E.
10	4" CENTERSET FAUCET	Z81101	TOILET RM.	BY ZURN / OWNER APPROVED EQUAL



2 | TYPICAL RESTROOM LAYOUT AND ACCESSIBILITY DIMENSIONS
SCALE: 1/2"=1'-0"

LEGEND

BUILDING SECTION	
WALL SECTION	
SECTION DETAIL	
PLAN DETAIL	
WALL TYPE (SEE SHEET A4.01)	
FLOOR/CEILING TYPE (SEE SHEET A4.02)	



1 | BRAMHALL SQUARE FLOORPLAN- FIRST FLOOR
SCALE: 1/4"=1'-0"

Prepared For:
RANDOM ORBIT, LLC
17 Chestnut St
Portland, ME

Consulting Engineer:
ARCHETYPE architects
48 Union Wharf Portland, Maine 04101
(207) 772-6022 Fax (207) 772-4056

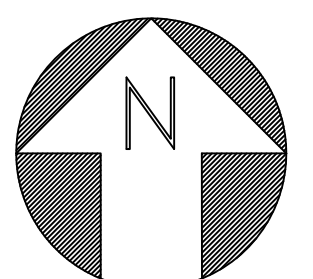
Project:
PELOTON BUILDING
BRAMHALL SQUARE
PORTLAND, ME

Revisions:
Issued for Permit 23 July 2010

Date:
23 July 2010

Scale:
1/4" = 1'-0"

FIRST FLOOR PLAN



A1.01