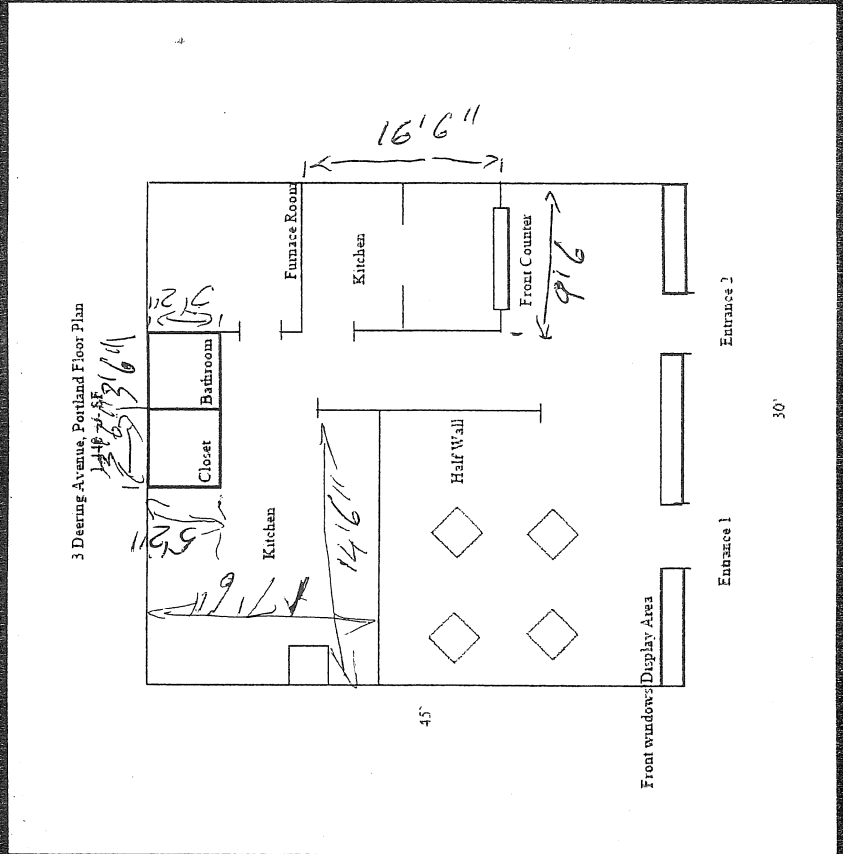


FOR LEASE: 3 DEERING AVENUE, PORTLAND

PROPERTY VITALS	
LOCATION	3 DEERING AVENUE, PORTLAND
OWNER	DRONAMIRAJU RAMESH & RAMA DRONAMIRAJU JTS
MAP LOT BLOCK	21368/140
BUILDING SIZE	2880 ± SF
AVAILABLE SPACE	1,440± SF (FIRST FLOOR)
ZONE	B2b BUSINESS COMMUNITY
SPRINKLER	YES
OFFICES	N/A
RESTROOM	1 PRIVATE
HEAT	OIL FORCED HOT AIR
A/C	TENANT EXPENSE
PARKING	OFF STREET
LEASE TYPE	MODIFIED GROSS
LEASE LENGTH	3 - 5 YEARS
LEASE RATE	\$1,600/MO MODIFIED GROSS
AVAILABLE	NOW



All information furnished is from sources deemed reliable. No warranty or representation, expressed or implied, is made as to the accuracy of information contained herein. All information is submitted subject to errors, omissions, change of price, rental or other conditions, withdrawals, prior to sale or lease or to any special condition, imposed by our print-