

**DOOR SCHEDULE**

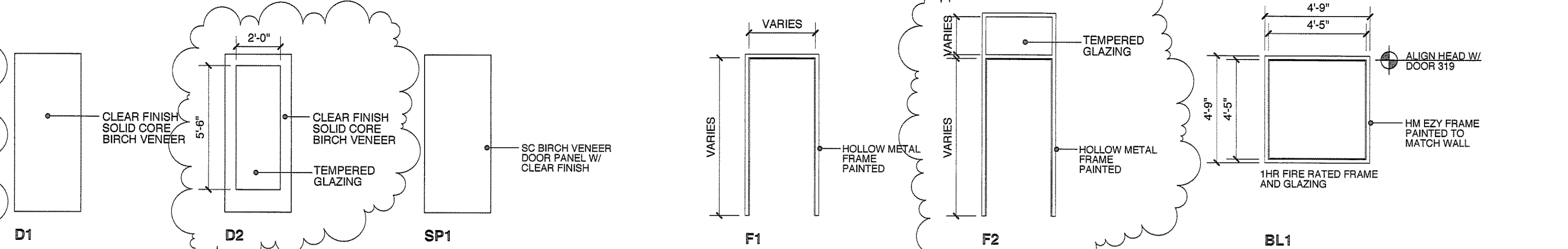
ALL DOORS STYLE D1, 3'-0" x 7'-0" x 1 3/4" FRAME F1 UNO.

Door Number	Location	Door	Hardware	Notes
<b>1ST FLOOR</b>				
100	101	HM	HW-7	D-1 F-1
101A	102A	HM	HW-7	D-1 F-1
101B	102B	HM	HW-7	D-1 F-1
102	103A	HM	HW-7	D-1 F-1
103	105	HM	HW-7	D-1 F-1
104	107	WOOD	HW-5	D-1 F-1
105	120A	HM	HW-7	D-1 F-1
106	124	HM	HW-6	D-1 F-1
107	128	HM	HW-7	D-1 F-1
108	129	HM	HW-7	D-1 F-1
109	125	HM	HW-6	D-1 F-1
110	137	WOOD	HW-5	D-1 F-1
111	132A	HM	HW-7	D-1 F-1
112	137A	HM	HW-7	D-1 F-1 NEW DOOR SLAB IN EXIST. FRAME DIMENSIONS VIF
113	142A	HM	HW-7	D-1 F-1
<b>2ND FLOOR</b>				
200	202	WOOD	HW-5	D-1 F-1
201	202	HM	HW-7	D-1 F-1
202	205	HM	HW-6	D-1 F-1
203	206	WOOD	HW-4	D-1 F-1
204	202	HM	HW-7	D-1 F-1
205	202	HM	HW-6	D-1 F-1
206	220	WOOD	HW-5	D-1 F-1
207	209	WOOD	HW-5	D-2 F-2 10'-0" HIGH FRAME W/ TRANSOM
208	211	WOOD	HW-5	D-2 F-2 10'-0" HIGH FRAME W/ TRANSOM
209	211	WOOD	HW-5	D-2 F-2 10'-0" HIGH FRAME W/ TRANSOM
210	212	WOOD	HW-5	D-2 F-2 10'-0" HIGH FRAME W/ TRANSOM
<b>3RD FLOOR - 318 NOT USED</b>				
300	301	HM	HW-7	D-1 F-1
301	303	HM	HW-7	D-1 F-1
302	304	HM	HW-7	D-2 F-1
303	304A	HM	HW-7	D-1 F-1
304	306	WOOD	HW-4	D-1 F-1
305	307	WOOD	HW-5	D-1 F-1
306	320	WOOD	HW-5	D-1 F-1
307	331	WOOD	HW-5	D-2 F-1
308	333	WOOD	HW-5	D-2 F-1
309	337A	HM	HW-7	D-1 F-1
310	336	WOOD	HW-5	D-1 F-1
311	336	WOOD	HW-5	D-1 F-1
312	340	WOOD	HW-5	D-2 F-1
313	338A	HM	HW-7	D-1 F-1
314	343B	HM	HW-7	D-1 F-1
315	345	HM	HW-6	D-1 F-1
316	343	HM	HW-7	D-1 F-1
317	343A	HM	HW-6	D-1 F-1
318	330	HM	HW-8	D-1 F-1 DOOR DIMS 2'-0" x 8'-0" x 1 3/4" 45 MIN. RATED DOOR
319	332	HM	HW-5	D-2 EXIST
320	334	HM	HW-5	D-2 EXIST
321	339	HM	HW-5	D-2 EXIST
322	341	HM	HW-5	D-2 EXIST
323	308	HM	HW-5	D-2 F-2 9'-0" HIGH FRAME W/ TRANSOM
324	309	HM	HW-5	D-2 F-2 9'-0" HIGH FRAME W/ TRANSOM
325	309	HM	HW-5	D-2 F-2 9'-0" HIGH FRAME W/ TRANSOM
326	311	HM	HW-5	D-2 F-2 9'-0" HIGH FRAME W/ TRANSOM
<b>MEZZANINE</b>				
400	400	HM	HW-7	D-1 F-1
401	400	HM	HW-7	D-1 F-1

**SLIDING PANEL SCHEDULE**

ALL PANELS STYLE SP1, 3'-6" x 7'-0" x 1 3/4" UNO.

Location	Matl	No. of Panels	Hardware	Notes
<b>1ST FLOOR</b>				
131	WOOD	1	HW-1	
132	WOOD	1	HW-1	
135	WOOD	1	HW-1	
136	WOOD	1	HW-1	
138	WOOD	1	HW-1	
139	WOOD	1	HW-1	
<b>2ND FLOOR</b>				
203	WOOD	4	HW-3	
231	WOOD	2	HW-1	
<b>3RD FLOOR</b>				
<b>HARDWARE BASIS OF DESIGN - 26D finish UNO.</b>				
Hinges: Stanley FB8179-4 1/2" antifriction bearing. Mortise Locks: Corbin/Russwin ML2000 Series. Lock Trim: Corbin/Russwin Newport design. Stops: wall - Ives 407 1/2" floor - Ives 436 438 Silencers: neoprene or rubber, 1/2" dia. BHMA A156 16 Grade 1. Lock Function: (A) passage - 10, (B) office - 51 (C) privacy - 30, (D) utility - 57				
HW-1: Top Line Grant 71-111 sliding track, Hafele 911.26.059 handles (both faces) all panels, Hafele 911.26.045 mortise lock, silencers.				
HW-2: Top Line Grant 72-222 sliding track, silencers.				
HW-3: Top Line Grant 72-222 sliding track, Hafele 911.26.059 handles (both faces) all panels, Hafele 911.26.045 mortise lock, silencers.				
HW-4 Passage: Hinges, lockset (A), door stop, silencers.				
HW-5 Office: Hinges, lockset (B), door stop, silencers.				
HW-6 Privacy: Hinges, lockset (C), door stop, silencers.				
HW-7 Utility: Hinges, lockset (D), door stop, silencers.				
HW-8 Fire: Hinges, lockset (A), door stop, silencers, closer				

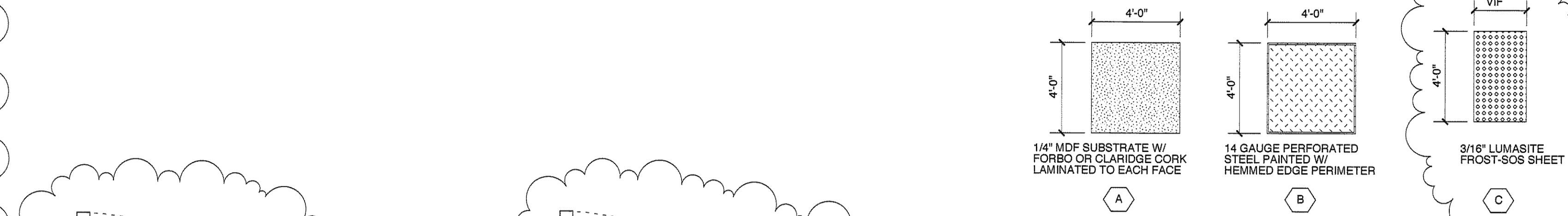


**DOOR TYPES**  
SCALE: 1/4"=1'-0"

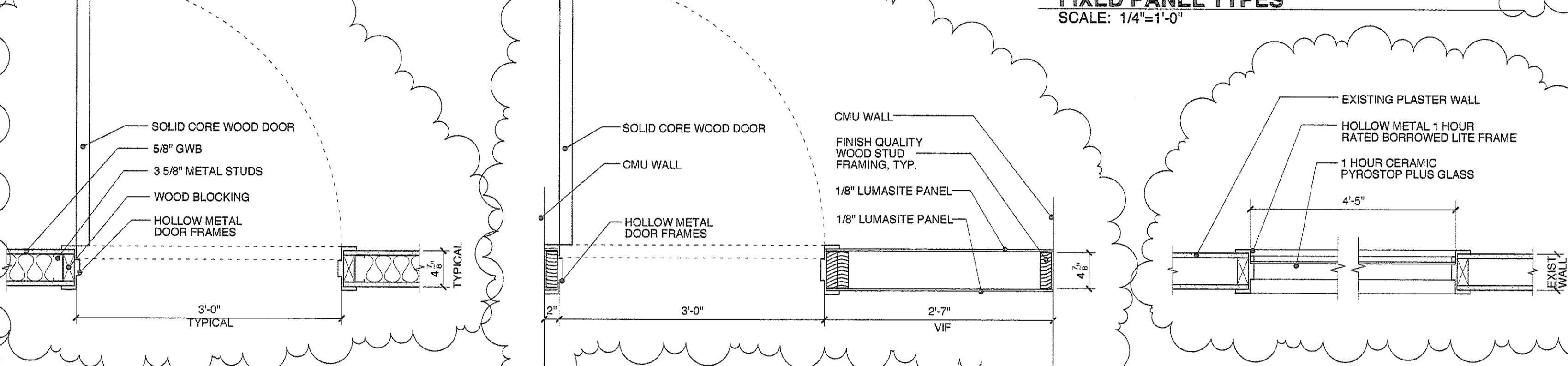
**SLIDING PANEL TYPES**  
SCALE: 1/4"=1'-0"

**FRAME TYPES**  
SCALE: 1/4"=1'-0"

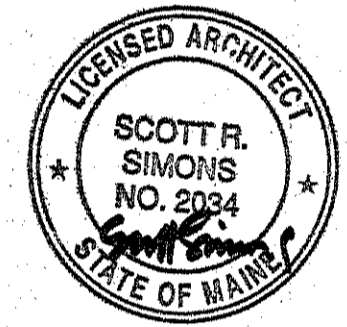
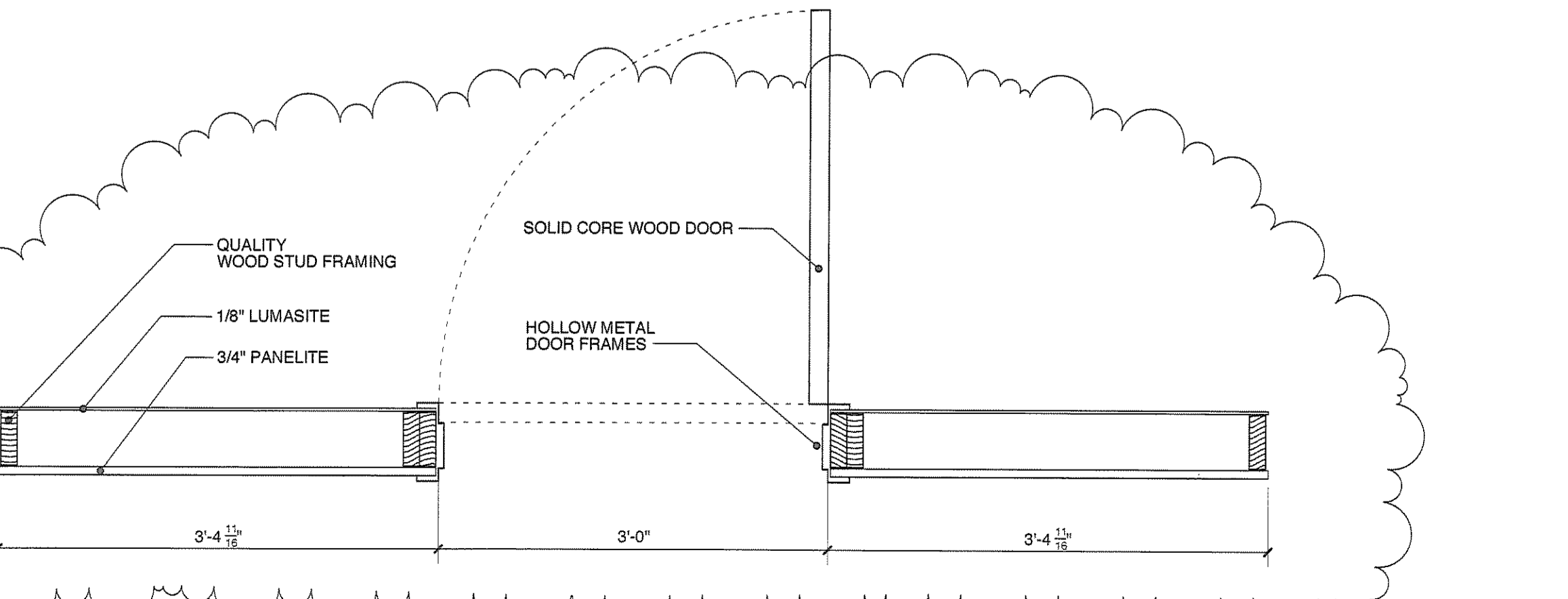
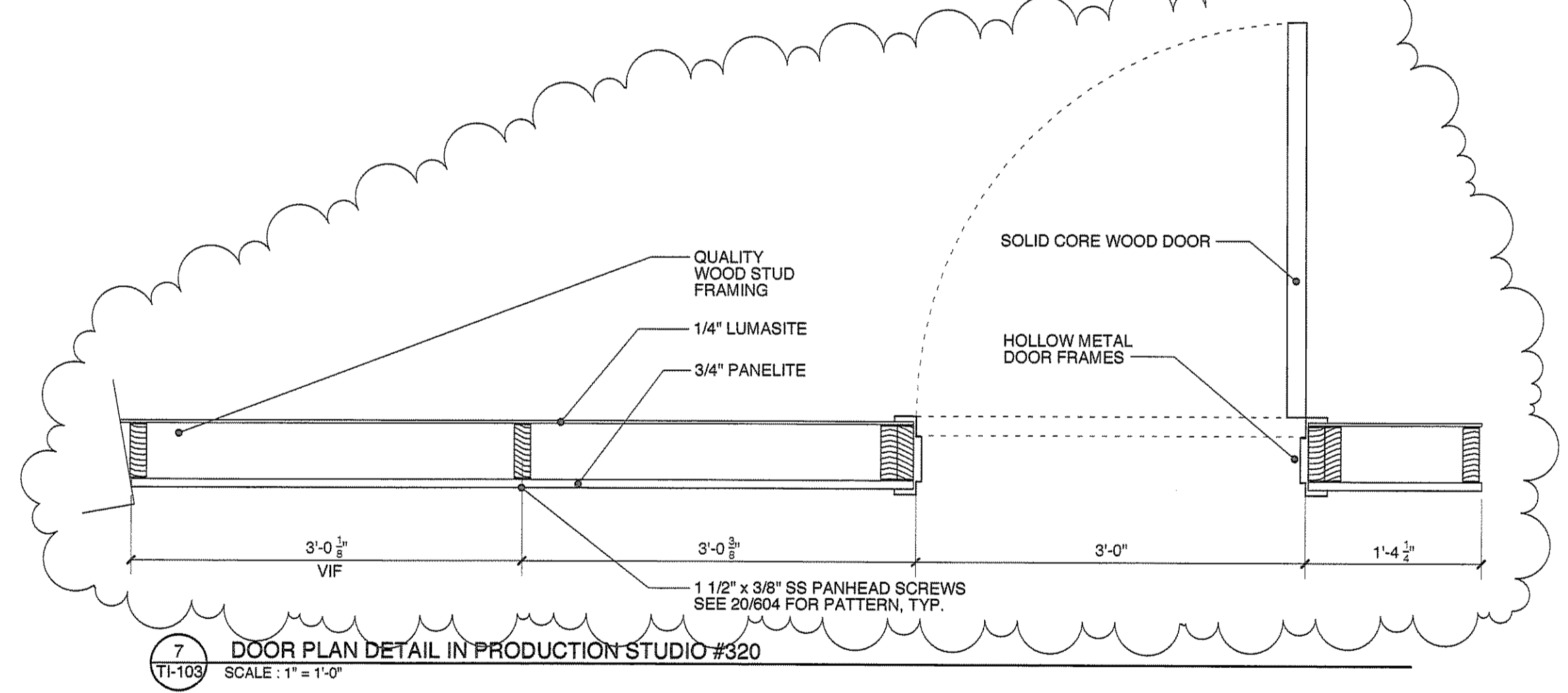
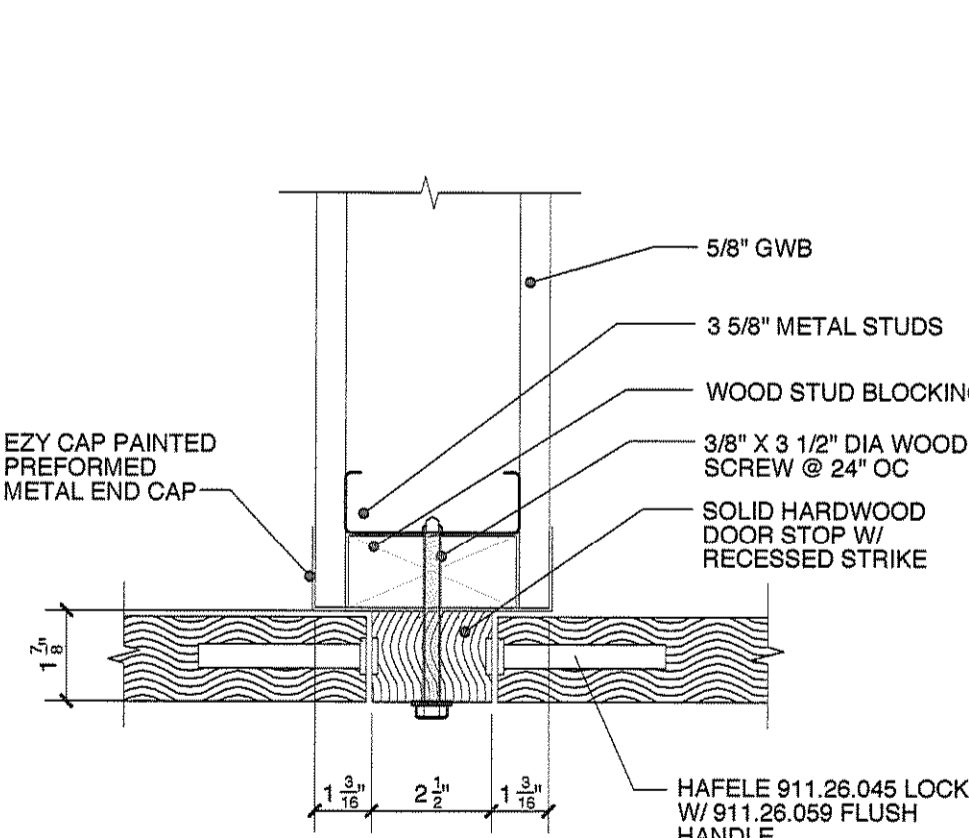
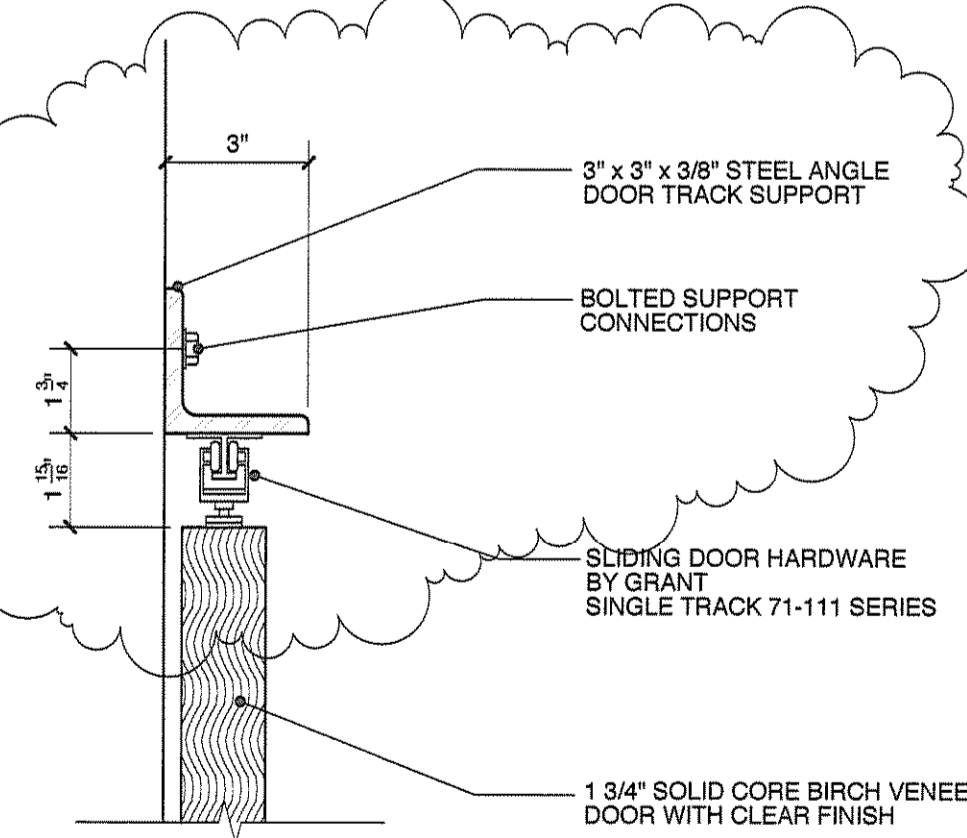
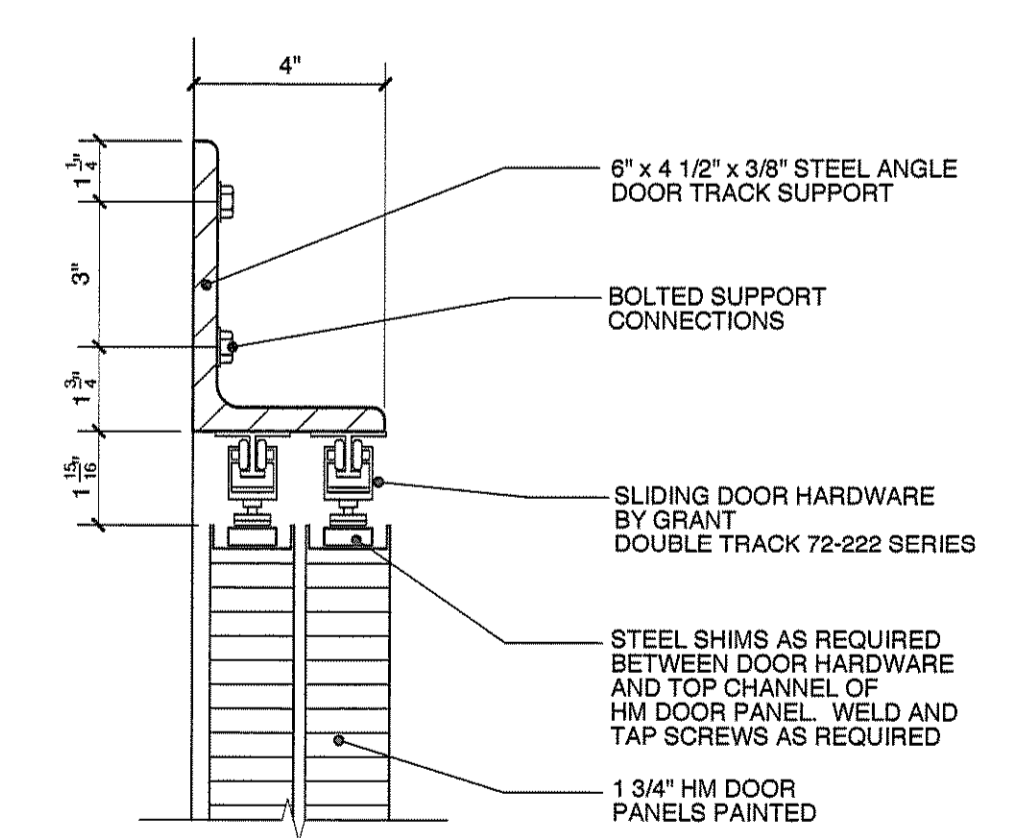
**BORROWED LITE FRAME**  
SCALE: 1/4"=1'-0"



**FIXED PANEL TYPES**  
SCALE: 1/4"=1'-0"



3 TYPICAL BORROWED LITE PLAN DETAIL SCALE: 1"=1'-0"



**SSA**  
Scott Simons Architects  
75 York Street  
Portland, Maine 04101  
tel 207 772 4656  
fax 207 629 4656  
web www.simonsarchitects.com

THIS DRAWING IS THE PROPERTY OF SCOTT SIMONS ARCHITECTS AND IS NOT TO BE COPIED OR REPRODUCED IN PART OR WHOLE.

PROJECT  
**via**  
**Baxter Library Interior Fit Up**  
CONGRESS STREET  
PORTLAND, ME

TITLE  
**DOOR SCHEDULES & DETAILS**

STATUS:  
**CONSTRUCTION DOCUMENTS  
ISSUED FOR PERMITTING**

DATE: 08.31.2009  
SCALE: AS NOTED  
PROJECT NO. 2009-0050  
DRAWN BY:

REVISION / DATE:  
ESTIMATING REVISION: APPLY TO ALL REVISION CLOUDS 09.08.2009  
2008© Scott Simons Architects

DWG NO. **TI-705**