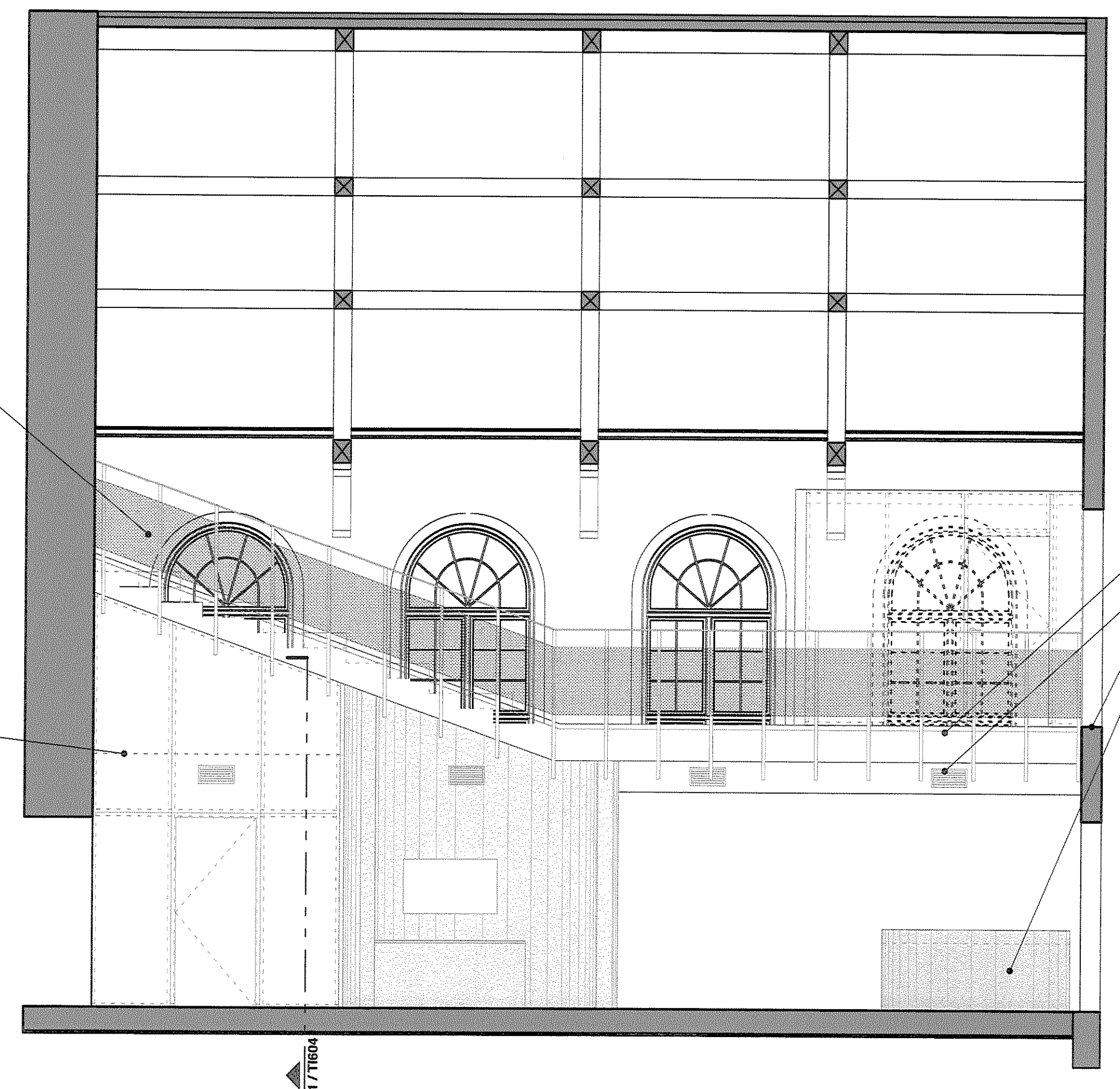
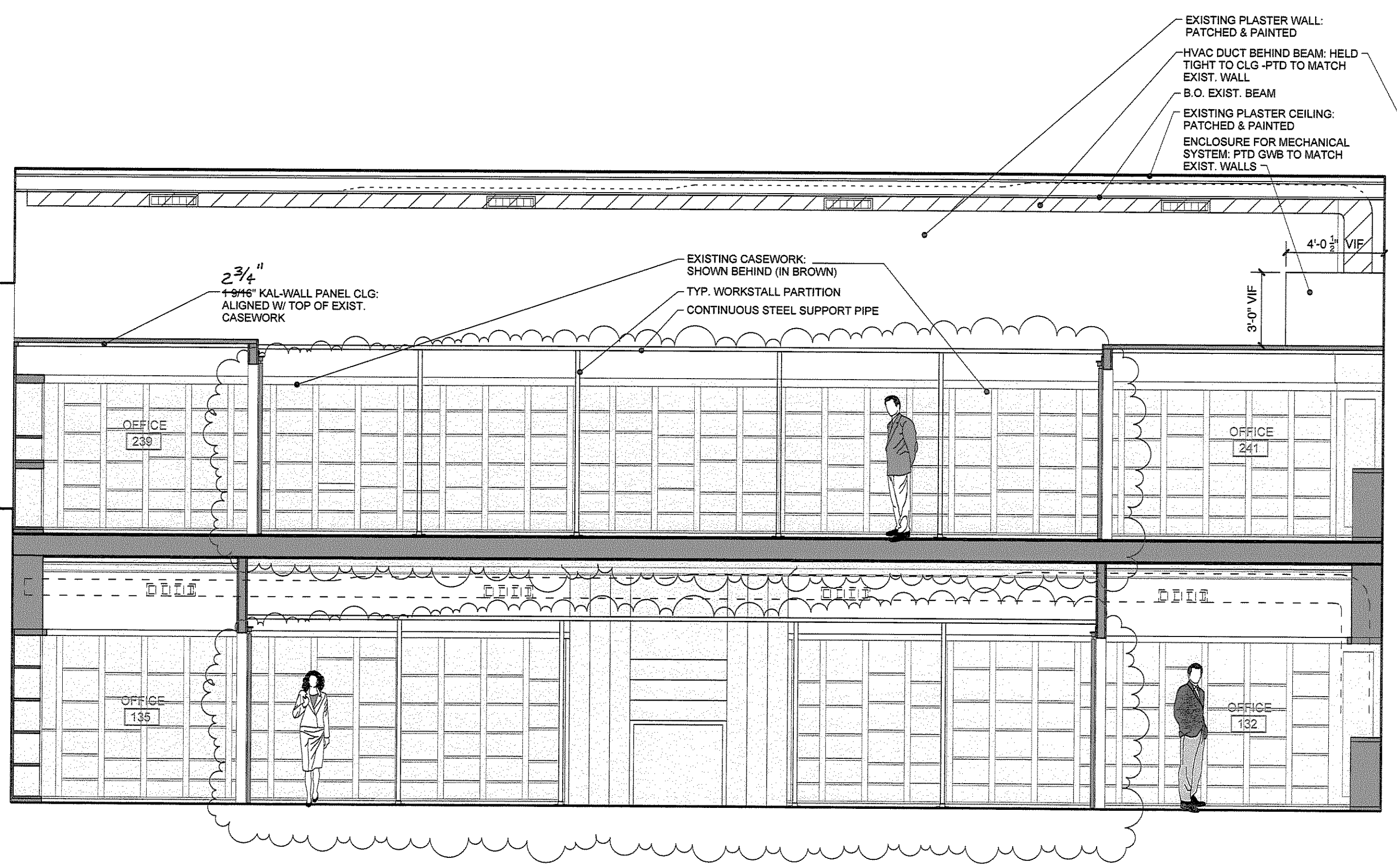


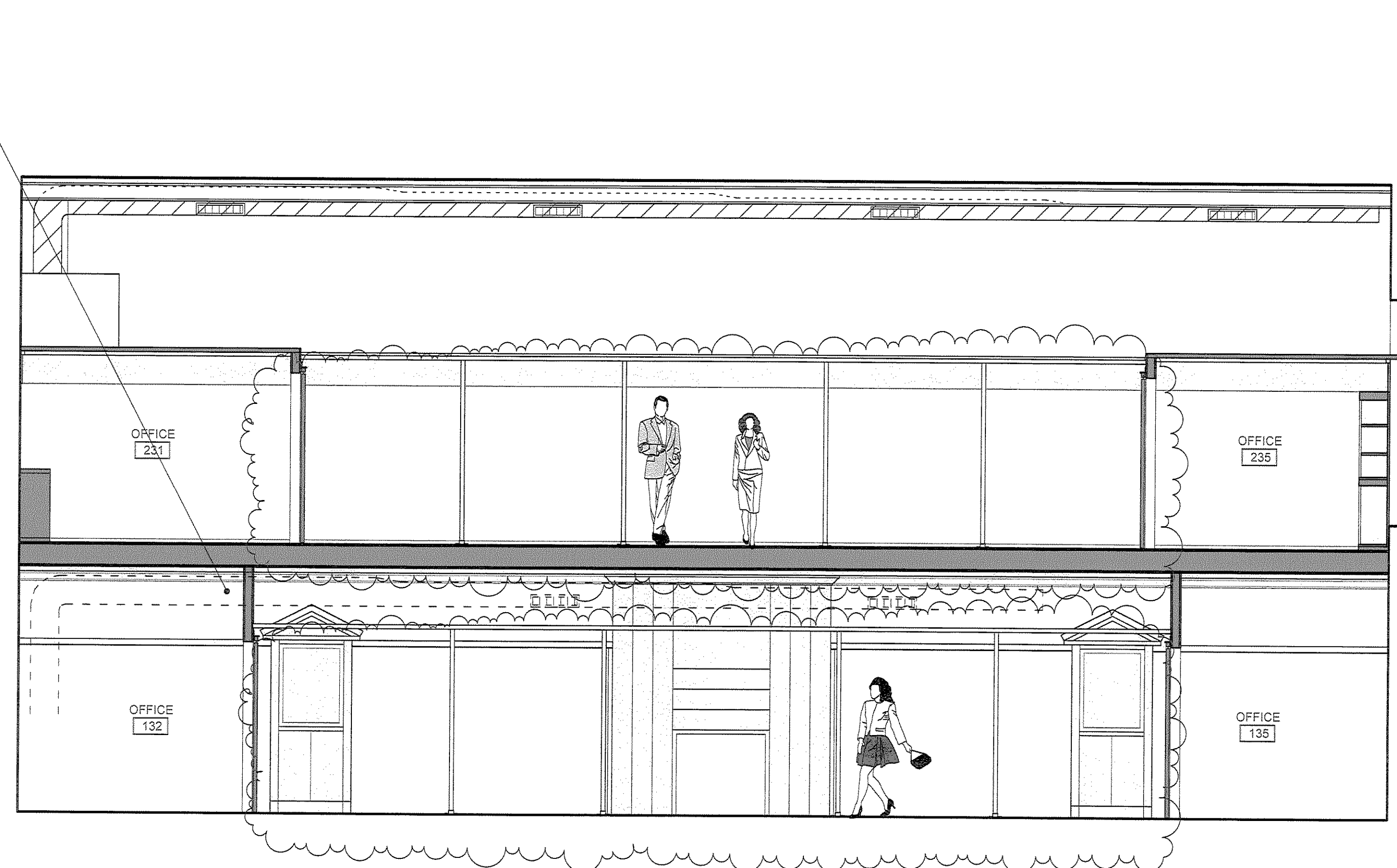
1 INTERIOR ELEVATION @ MEZZANINE EDGE
SCALE: 1/4" = 1'-0"



2 INTERIOR ELEVATION @ MEZZANINE EDGE
SCALE: 1/4" = 1'-0"



3 INTERIOR ELEVATION @ WESTERN STACKS ROOMS
SCALE: 1/4" = 1'-0"



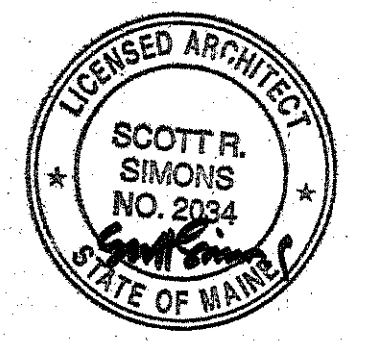
1 INTERIOR ELEVATION @ EASTERN STACKS ROOMS
SCALE: 1/4" = 1'-0"

- NEW PENDANT LIGHTING
- NEW OPENING INTO NEW THIRD FLOOR AREA (NORTH BUILDING)
- EXISTING PLASTER WALL: PATCHED & PAINTED
- EXISTING TRUSSES W SURFACE MOUNTED LED UP-LIGHTING
- NEW PERFORATED METAL RAILING @ MEZZANINE
- NEW TRACK LIGHTING
- MEZZANINE FLOOR HELD BACK FROM WINDOW, ALLOWING VIEW AND DAYLIGHT FROM ABOVE AND BELOW

- EXPOSED STRUCTURE, PTD
- HVAC REGISTERS HOUSED WITHIN MEZZANINE SOFFIT
- NEW OPENING TO LANDING @ EXISTING STAIRWAY
- NEW MILLWORK: RECEPTION DESK N.I.C.

- EXISTING PLASTER WALL: PATCHED & PAINTED
- HVAC DUCT BEHIND BEAM: HELD TIGHT TO CLG -PTD TO MATCH EXIST. WALL
- B.O. EXIST. BEAM
- EXISTING PLASTER CEILING: PATCHED & PAINTED
- ENCLOSURE FOR MECHANICAL SYSTEM: PTD GWB TO MATCH EXIST. WALLS

- 2 3/4" 1/4" KAL-WALL PANEL CLG. ALIGNED W/ TOP OF EXIST. CASEWORK
- EXISTING CASEWORK: SHOWN BEHIND (IN BROWN)
- TYP. WORKSTALL PARTITION
- CONTINUOUS STEEL SUPPORT PIPE



SSA
Scott Simons Architects
75 York Street
Portland, Maine 04101
tel: 207 772 4656
fax: 207 828 4656
web: www.simonsarchitects.com

THIS DRAWING IS THE PROPERTY OF SCOTT SIMONS ARCHITECTS AND IS NOT TO BE COPIED OR REPRODUCED IN PART OR WHOLE.

PROJECT
via
Baxter Library Interior Fit Up
CONGRESS STREET
PORTLAND, ME

TITLE
INTERIOR ELEVATIONS

STATUS:
CONSTRUCTION DOCUMENTS ISSUED FOR PERMITTING

DATE: 08.31.2009
SCALE: AS NOTED
PROJECT NO. 2009-0050
DRAWN BY:

REVISION / DATE:
ESTIMATING REVISION: APPLY TO ALL REVISION CLOUDS
09.08.2009

2009 © Scott Simons Architects

DWG NO. **TI-603**