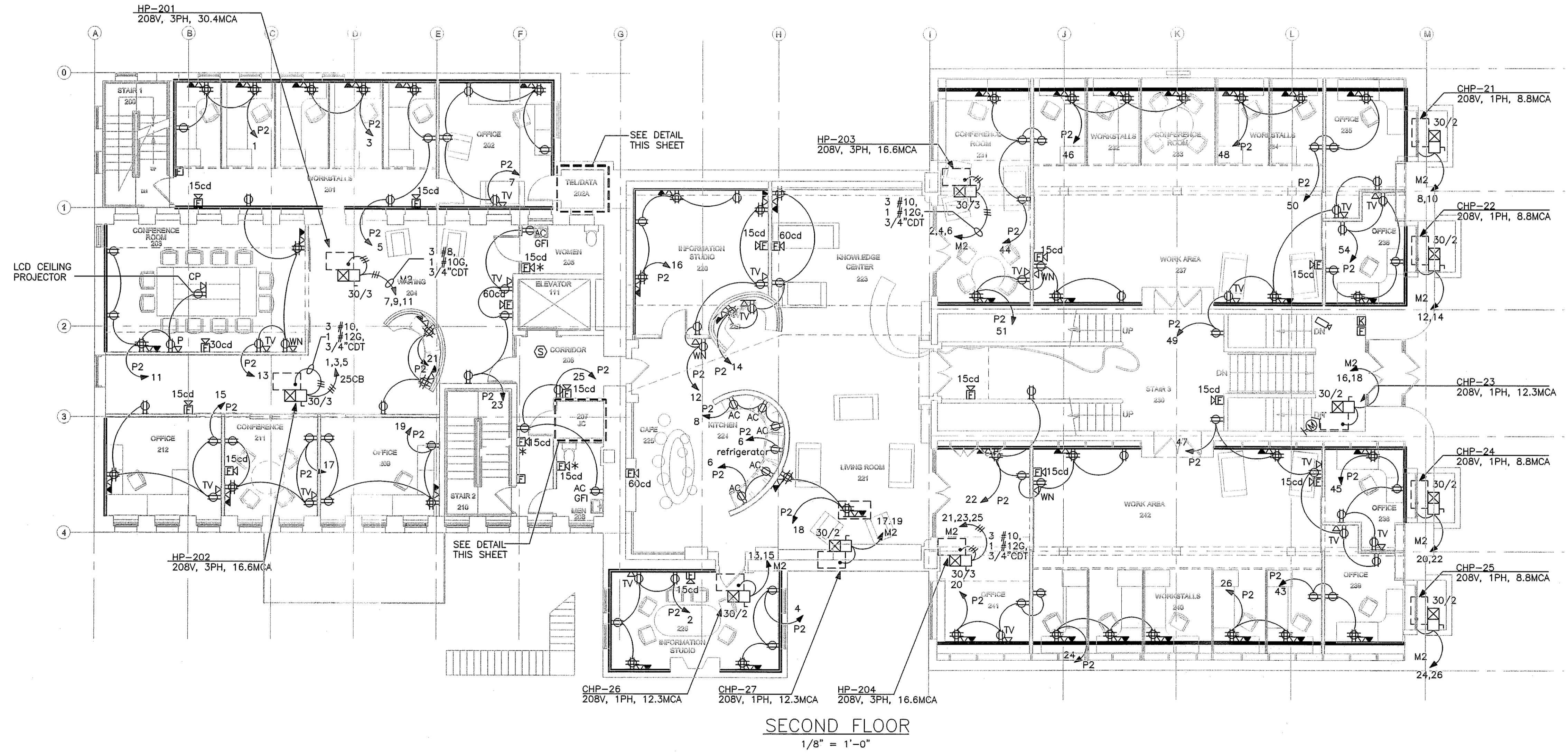
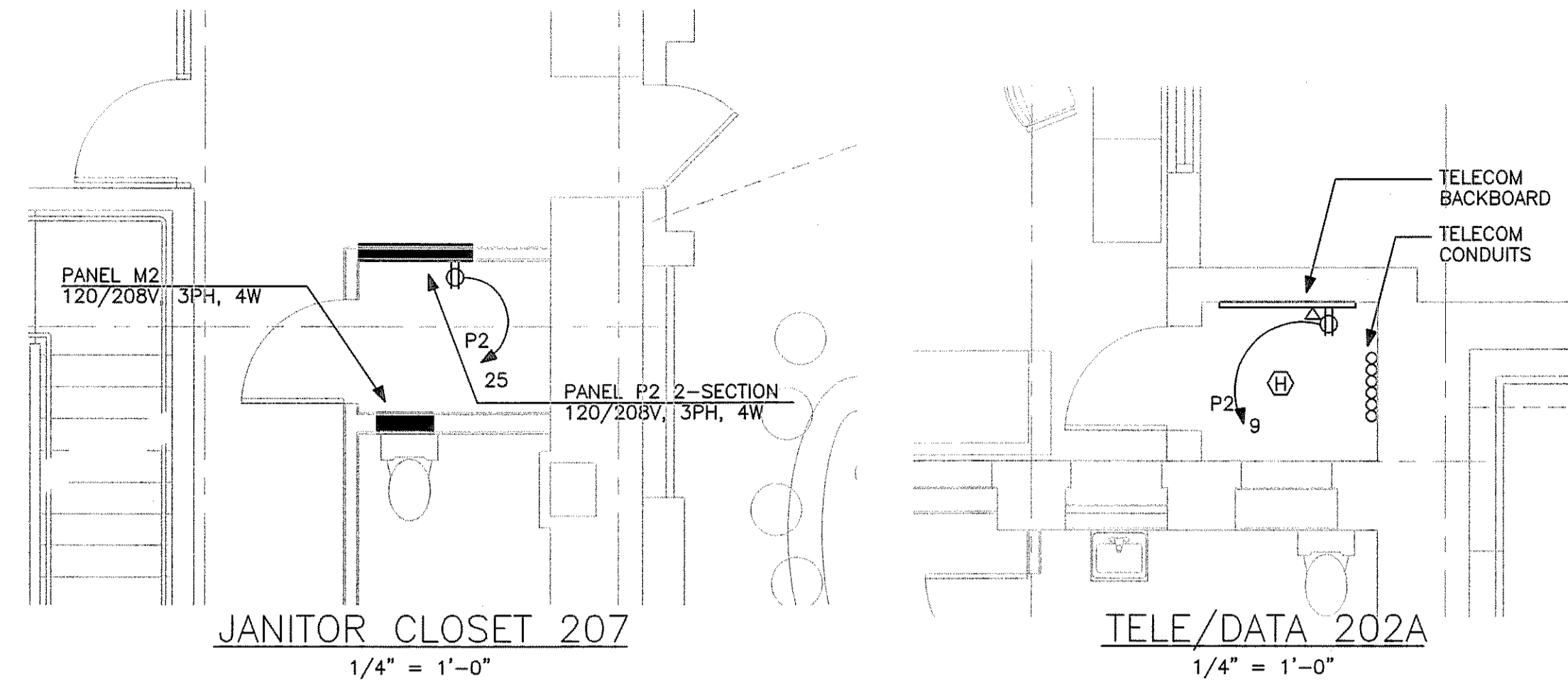
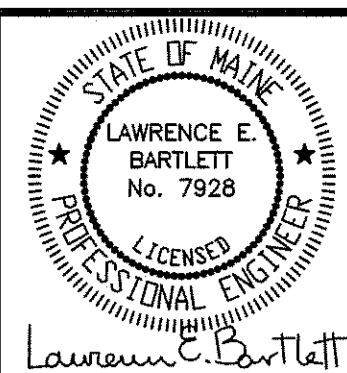
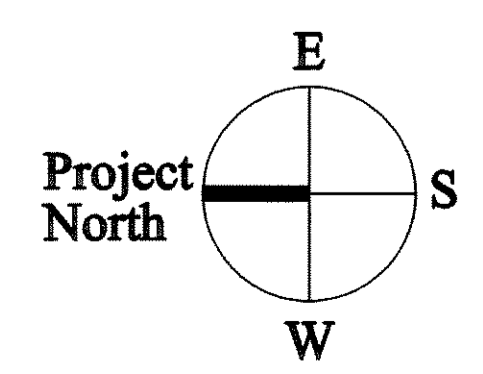


- NOTES:
 1. WHERE NECESSARY, INSTALL SURFACE METAL RACEWAY AT THE BASE OF MILLWORK.
 2. VERIFY THE EXACT LOCATION OF ALL MECHANICAL EQUIPMENT PRIOR TO ROUGH-IN.



SECOND FLOOR
 1/8" = 1'-0"



Prepared For
NORTLAND ENTERPRISES, LLC
 ONE CITY CENTER - 4TH FLOOR
 PORTLAND, ME 04101

Consulting Engineer:

Architect:
ARCHETYPE architects
 48 Union Wharf Portland, Maine 04101
 (207) 772-6022 Fax (207) 772-4056

Project:
The BAXTER LIBRARY
 619 CONGRESS STREET
 PORTLAND, MAINE

Revisions:

Date: 4 Sept. 2009
 Scale: 1/8" = 1'-0"
SECOND FLOOR POWER PLAN

E1.02