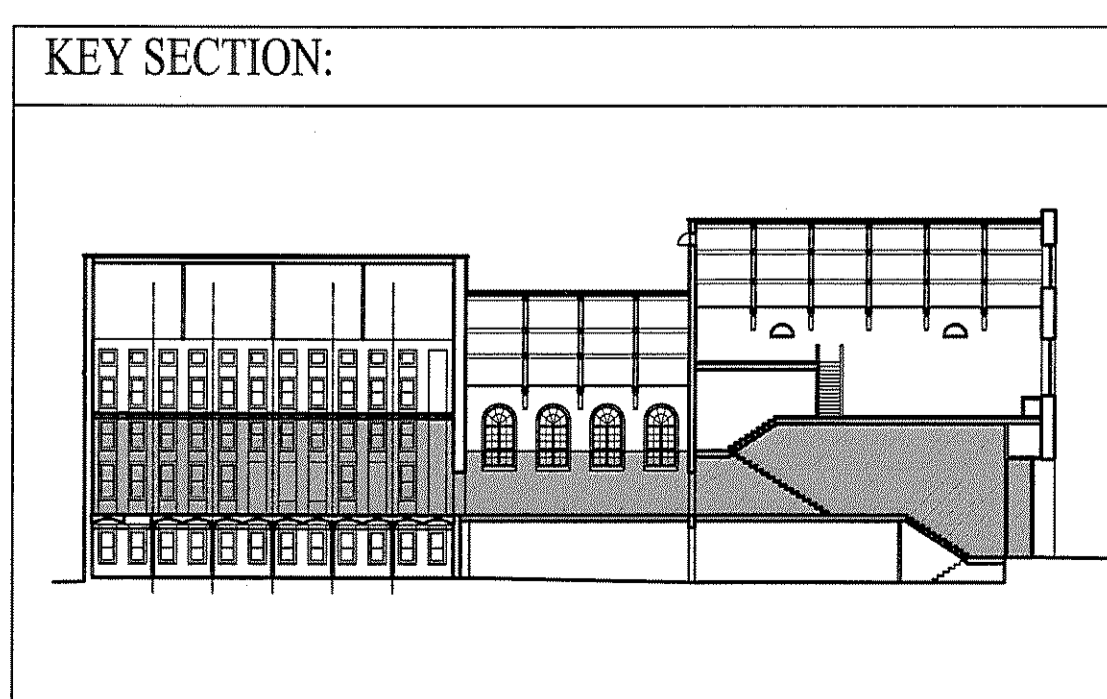
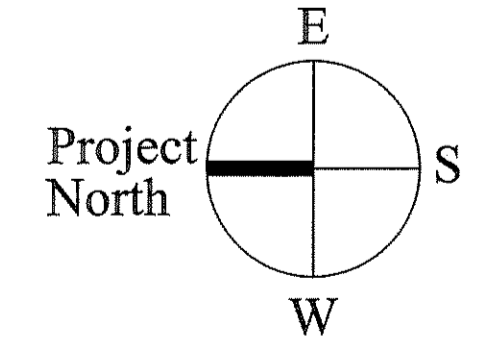


- DEMOLITION NOTES:**
- NORTH BUILDING:**
1. REMOVE ALL SUSPENDED ACT CEILING AND GRID.
  2. REMOVE GYPSUM WALLBOARD PARTITIONS AS INDICATED ON PLANS BY DASHED LINES.
  3. REMOVE ALL PLUMBING FIXTURES.
  4. REMOVE SHEET VINYL & VCT FLOORING AND CARPET.
  5. FLOOR DEMOLITION WILL BE REQUIRED FOR NEW STAIRS ONE AND TWO AND NEW ELEVATOR TOWER. STRUCTURAL FLOOR DEMOLITION WILL BE COORDINATED WITH STRUCTURAL ENGINEER. NOTIFY ARCHITECT AND ENGINEER FOR SITE MEETING PRIOR TO DEMOLITION ONCE PREPARATION DEMO HAS OCCURRED.
  6. PROTECT ALL WOOD TRIM, PLASTER WALLS AND HISTORIC CONTEXT - I.E. DOORS, TRIM, CASING, SHELVING, CABINETS - DEMOLITION OF ITEMS IN CONTACT WITH THESE ELEMENTS SHALL PROCEED ONLY AFTER ON-SITE CONSULTATION WITH ARCHITECT.
- CENTRAL BUILDING:**
1. REMOVE GYPSUM WALLBOARD PARTITIONS AS INDICATED ON PLANS BY DASHED LINES.
  2. REMOVE MEZZANINE FLOOR STRUCTURE, DOORS AND STAIR.
  3. REMOVE SHEET FLOORING AND CARPET.
  4. PROTECT ALL WOOD TRIM, PLASTER WALLS AND HISTORIC CONTEXT - I.E. DOORS, TRIM, CASING, SHELVING, CABINETS - DEMOLITION OF ITEMS IN CONTACT WITH THESE ELEMENTS SHALL PROCEED ONLY AFTER ON-SITE CONSULTATION WITH ARCHITECT.
- SOUTH BUILDING:**
1. REMOVE GYPSUM WALLBOARD PARTITIONS AS INDICATED ON PLANS BY DASHED LINES.
  2. REMOVE ALL PLUMBING FIXTURES.
  3. REMOVE SHEET VINYL & VCT FLOORING AND CARPET.
  4. PROTECT ALL WOOD TRIM, PLASTER WALLS AND HISTORIC CONTEXT - I.E. DOORS, TRIM, CASING, SHELVING, CABINETS - DEMOLITION OF ITEMS IN CONTACT WITH THESE ELEMENTS SHALL PROCEED ONLY AFTER ON-SITE CONSULTATION WITH ARCHITECT.
  5. PROTECT MOSAIC TILE FLOOR AND TRAVERTINE STAIRS AND LANDINGS.
  6. PROTECT MARBLE PANEL WALLS AT STAIR.



Project: **The BAXTER LIBRARY**  
 619 CONGRESS STREET  
 PORTLAND, MAINE

Date: 19 August 2009  
 Scale: 1/8" = 1'-0"  
 Revisions:  
 Issued for Pricing - 19 August 2009  
 Issued for Bid - 8 September 2009

Architect: **ARCHETYPE architects**  
 48 Union Wharf Portland, Maine 04101  
 (207) 772-6022 Fax (207) 772-4056

Consulting Engineer:

Prepared For: **NORTHLAND ENTERPRISES, LLC**  
 ONE CITY CENTER - 4TH FLOOR  
 PORTLAND, ME 04101

**A1.02**  
**SECOND FLOOR PLAN**