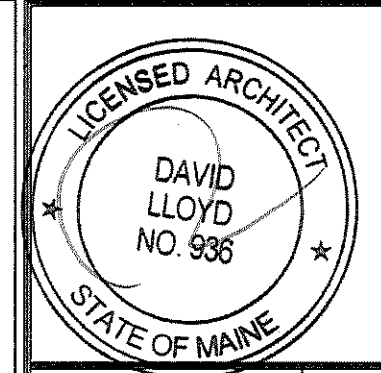
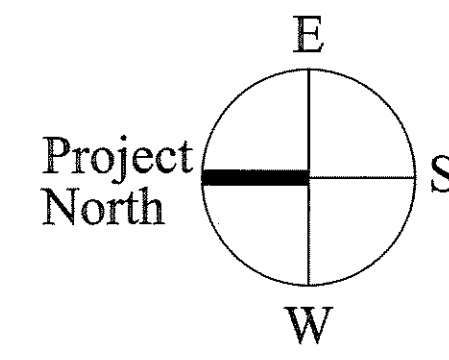
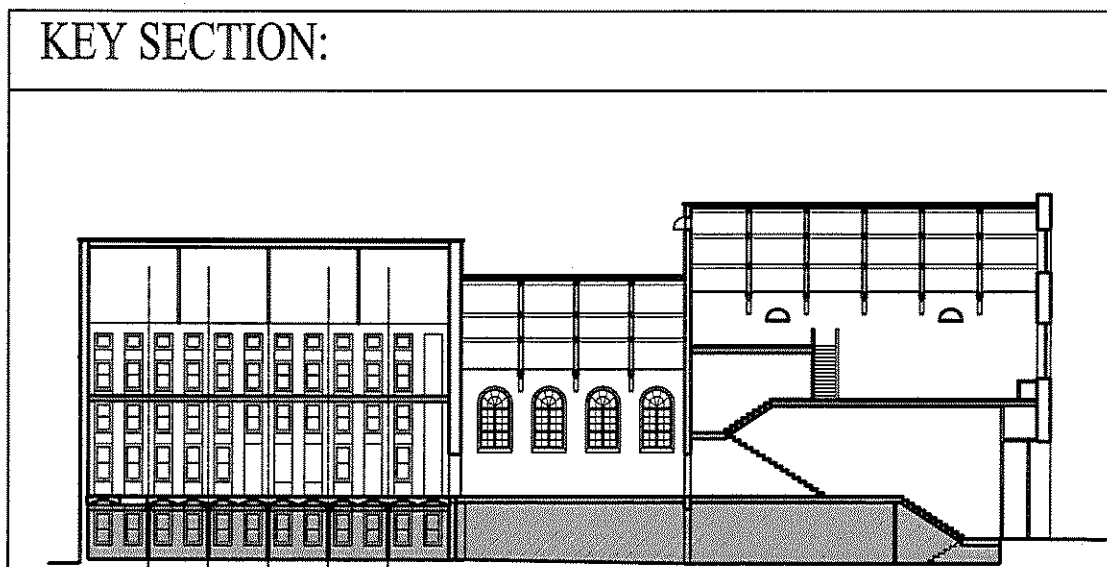


- DEMOLITION NOTES:**
- NORTH BUILDING:**
1. REMOVE ALL SUSPENDED ACT CEILING AND GRID.
 2. REMOVE GYPSUM WALLBOARD PARTITIONS AS INDICATED ON PLANS BY DASHED LINES.
 3. REMOVE ALL PLUMBING FIXTURES.
 4. REMOVE SHEET VINYL & VCT FLOORING AND CARPET.
 5. PLASTER VAULTED CEILING THAT EXISTS IN SOME AREAS ABOVE EXIST ACUSTIC CEILING SHALL REMAIN INTACT. UPON INVESTIGATION ARCHITECT WILL DETERMINE EXTENT OF SALVAGE AND DEMOLITION OF PLASTER VAULTS.
 6. PROTECT ALL WOOD TRIM, PLASTER WALLS AND HISTORIC CONTEXT - I.E. DOORS, TRIM, CASING, SHELVING, CABINETS - DEMOLITION OF ITEMS IN CONTACT WITH THESE ELEMENTS SHALL PROCEED ONLY AFTER ON-SITE CONSULTATION WITH ARCHITECT.
- CENTRAL BUILDING:**
1. REMOVE GYPSUM WALLBOARD PARTITIONS AS INDICATED ON PLANS BY DASHED LINES.
 2. REMOVE ALL PLUMBING FIXTURES.
 3. REMOVE SHEET VINYL & VCT FLOORING AND CARPET.
 4. PROTECT ALL WOOD TRIM, PLASTER WALLS AND HISTORIC CONTEXT - I.E. DOORS, TRIM, CASING, SHELVING, CABINETS - DEMOLITION OF ITEMS IN CONTACT WITH THESE ELEMENTS SHALL PROCEED ONLY AFTER ON-SITE CONSULTATION WITH ARCHITECT.
- SOUTH BUILDING:**
1. REMOVE GYPSUM WALLBOARD PARTITIONS AS INDICATED ON PLANS BY DASHED LINES.
 2. REMOVE ALL PLUMBING FIXTURES.
 3. REMOVE SHEET VINYL & VCT FLOORING AND CARPET.
 4. PROTECT ALL WOOD TRIM, PLASTER WALLS AND HISTORIC CONTEXT - I.E. DOORS, TRIM, CASING, SHELVING, CABINETS - DEMOLITION OF ITEMS IN CONTACT WITH THESE ELEMENTS SHALL PROCEED ONLY AFTER ON-SITE CONSULTATION WITH ARCHITECT.
 5. PROTECT MOSAIC TILE FLOOR AND TRAVERTINE STAIRS AND LANDINGS.
 6. PROTECT MARBLE PANEL WALLS AT STAIR.

- GENERAL NOTES:**
1. ALL MASONRY OPENING DIMENSIONS ARE NOMINAL - I.E. 6'-0" M.O. EQUALS 6'-0-3/8" ACTUAL OPENING
 2. OFFSET STUDS WHERE REQUIRED TO ACCOMMODATE STRAIGHT RUNS OF WALLS WITH 1 AND 2 LAYERS OF GYP BOARD. FINISHED GYP BOARD SHALL BE A CONTINUOUS PLANE.
 3. ALL DIMENSIONS ARE TO FACE OF ROUGH FRAMING, COLUMN CENTERLINES AND FACE OF MASONRY.
 4. SEE A7.01 FOR DOOR SCHEDULE
 5. DEMOLISH AND REMOVE SUSPENDED CEILINGS IN FIRST FLOOR LEVEL AND IN SECOND FLOOR OF NORTH BUILDING SECTION
 6. REMOVE ALL INSULATION LIGHTING AND ASSOCIATED ELECTRICAL EQUIPMENT CONDUITS.



Prepared For:
NORTHLAND ENTERPRISES, LLC
 ONE CITY CENTER - 4TH FLOOR
 PORTLAND, ME 04101

Consulting Engineer:
ARCHETYPE architects
 48 Union Wharf Portland, Maine 04101
 (207) 772-6022 Fax (207) 772-4056

Architect:
The BAXTER LIBRARY
 619 CONGRESS STREET
 PORTLAND, MAINE

Project:
 Issued for Pricing - 19 August 2009
 Issued for Bid - 8 September 2009

Date:
 19 August 2009

Scale:
 1/8" = 1'-0"

FIRST FLOOR PLAN
A1.01