

Prepared For:
NORTHLAND ENTERPRISES, LLC
 ONE CITY CENTER - 4TH FLOOR
 PORTLAND, ME 04101

22 Old Orchard Beach, ME 04064-1171
 Tel: 207-934-0039
 Fax: 207-934-0039

Consulting Engineer:
STRUCTURAL DESIGN CONSULTING

Architect:
ARCHETYPE architects
 48 Union Wharf Portland, Maine 04101
 (207) 772-6022 Fax (207) 772-4056

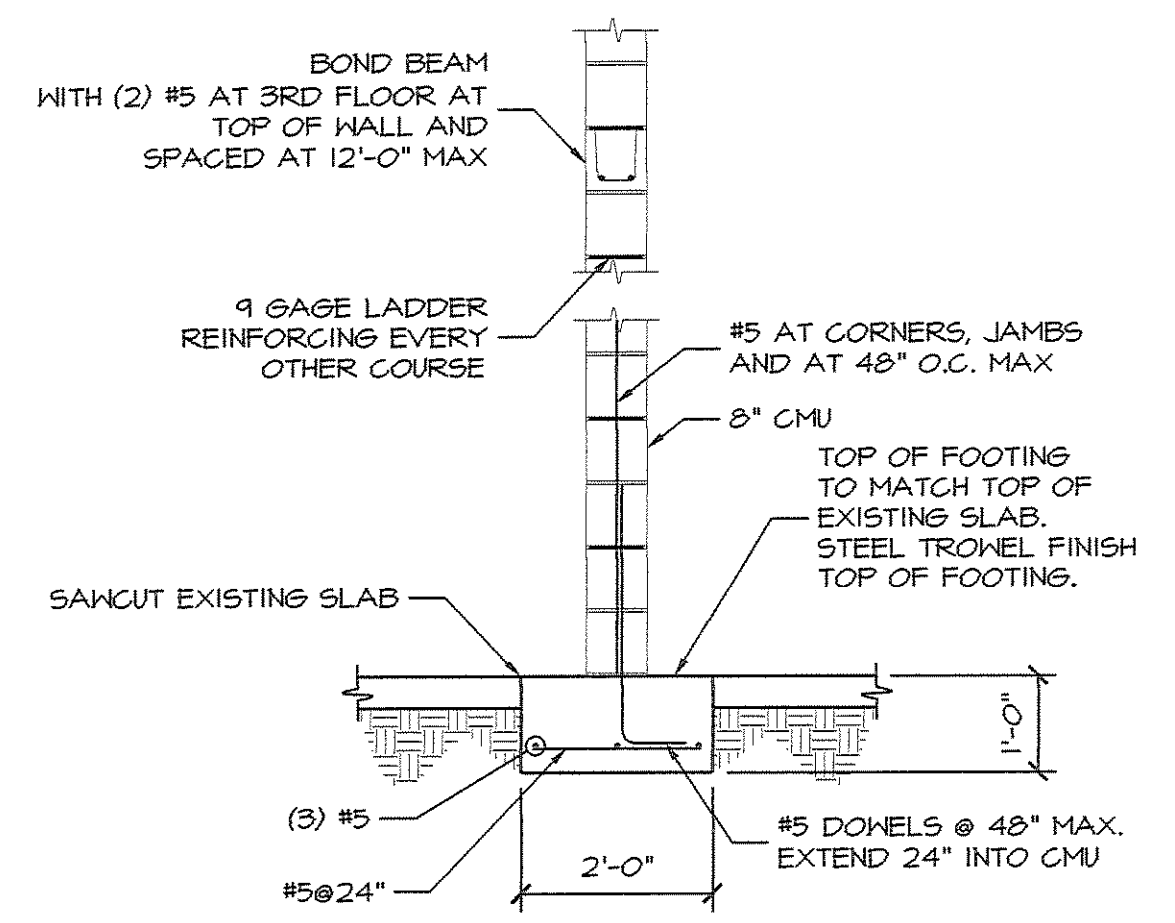
Project:
The BAXTER LIBRARY
 619 CONGRESS STREET
 PORTLAND, MAINE

Revisions:

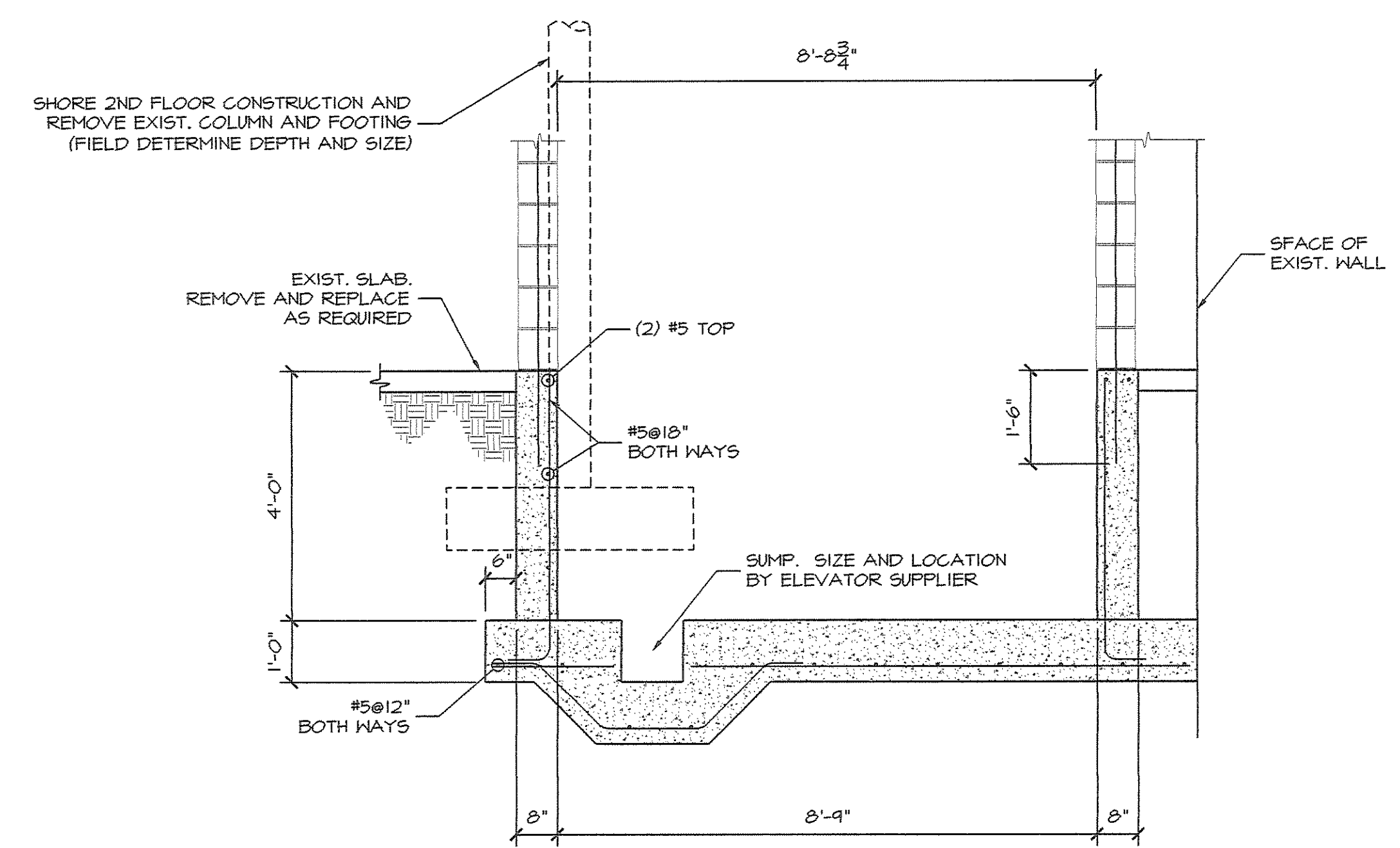
Issued for Pricing	19 August 2009
Bid Set	08 September 2009

Date: 19 August 2009
 Scale: As Noted
STRUCTURAL SECTIONS & DETAILS

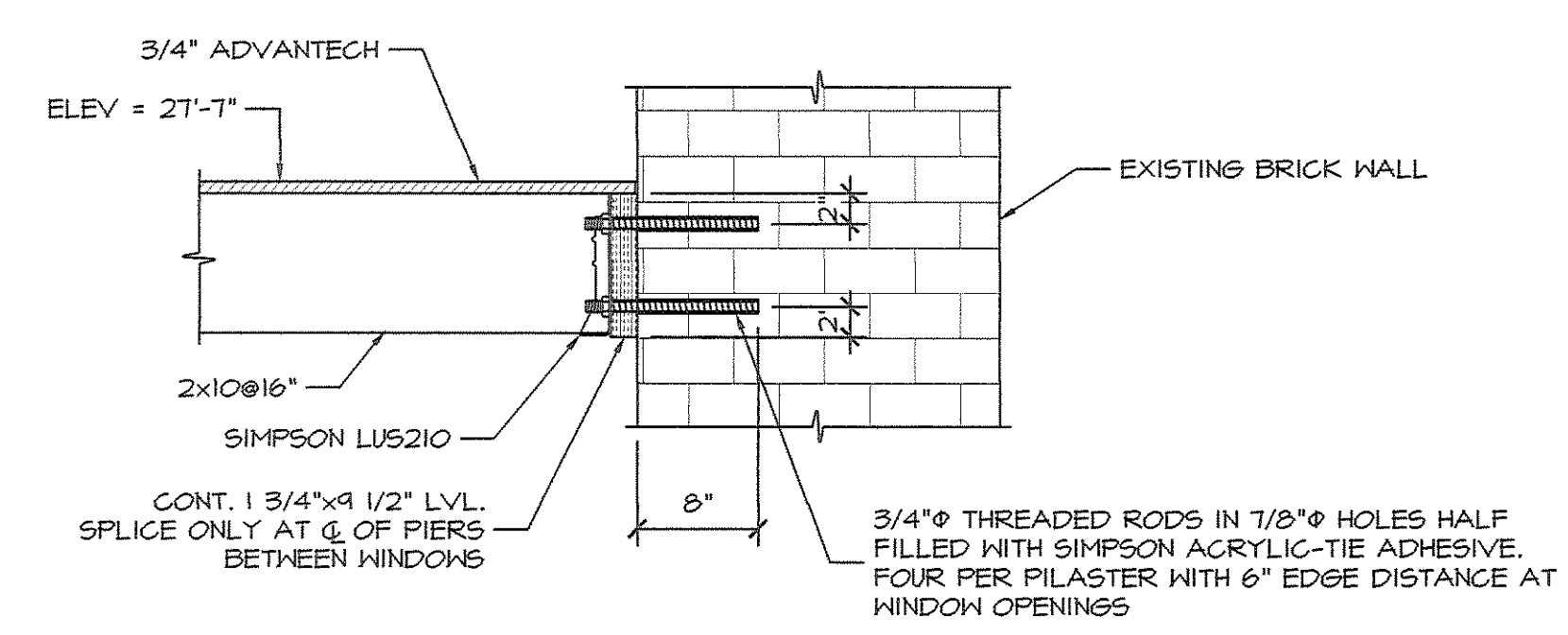
S2.01



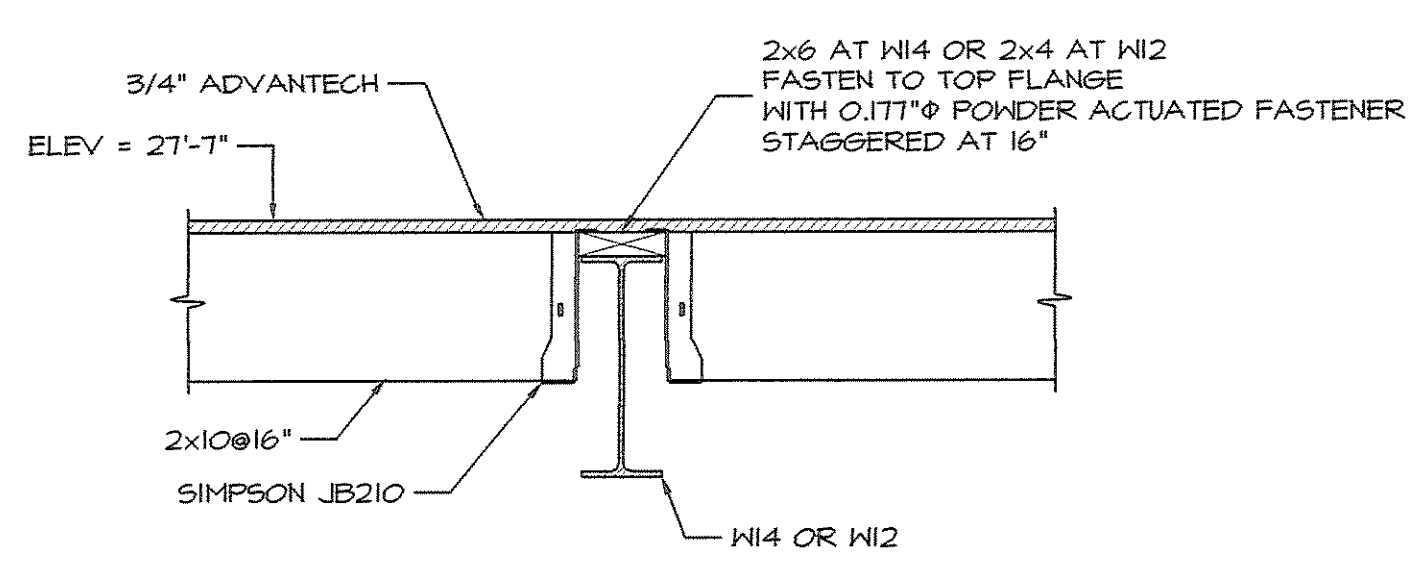
SECTION 1
 1/2"=1'-0" S1.01
 @ROUT ALL REINFORCED CELLS SOLID



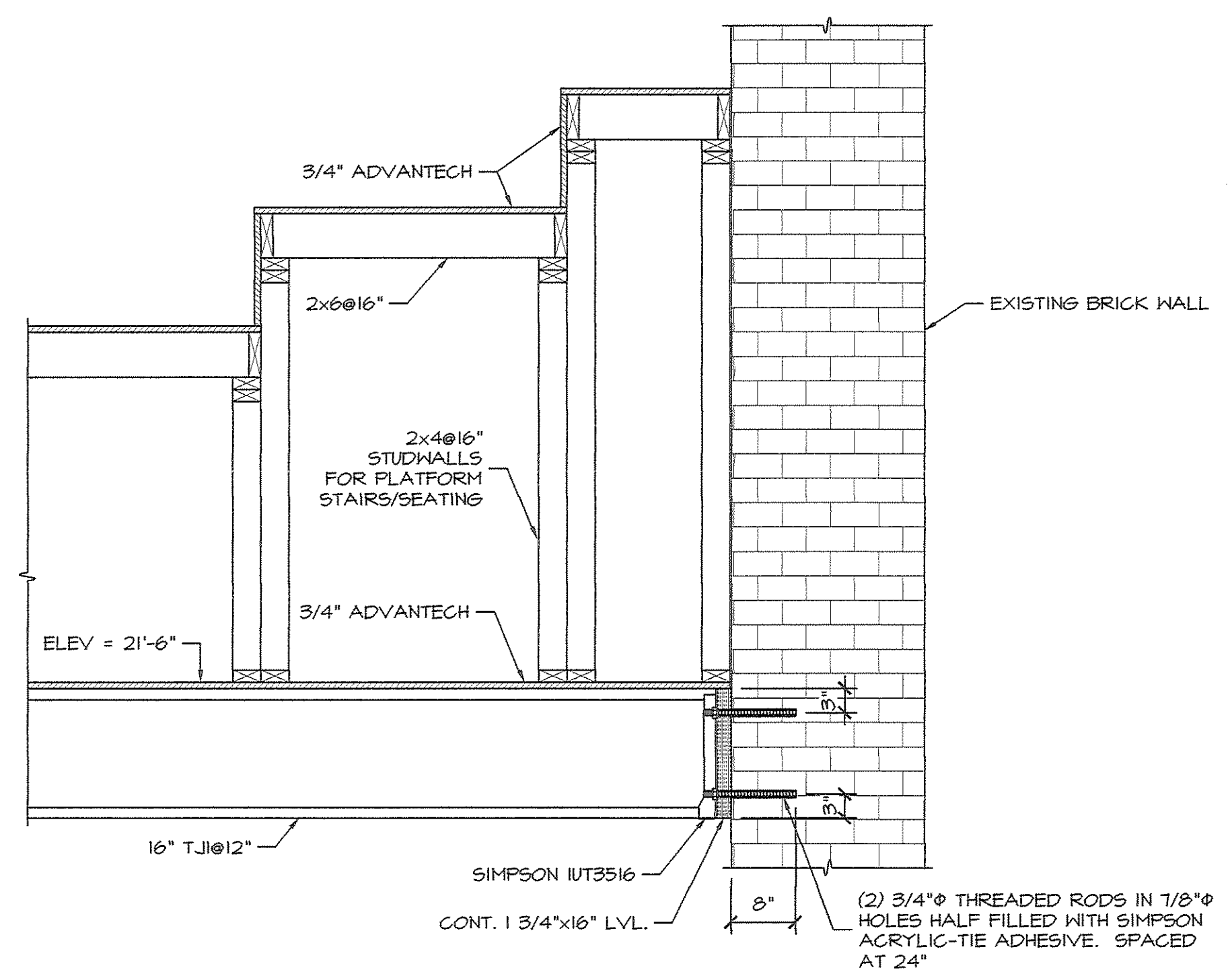
SECTION 2
 1/2"=1'-0" S1.01
 SEE 1/52.10 FOR CMU REINFORCING



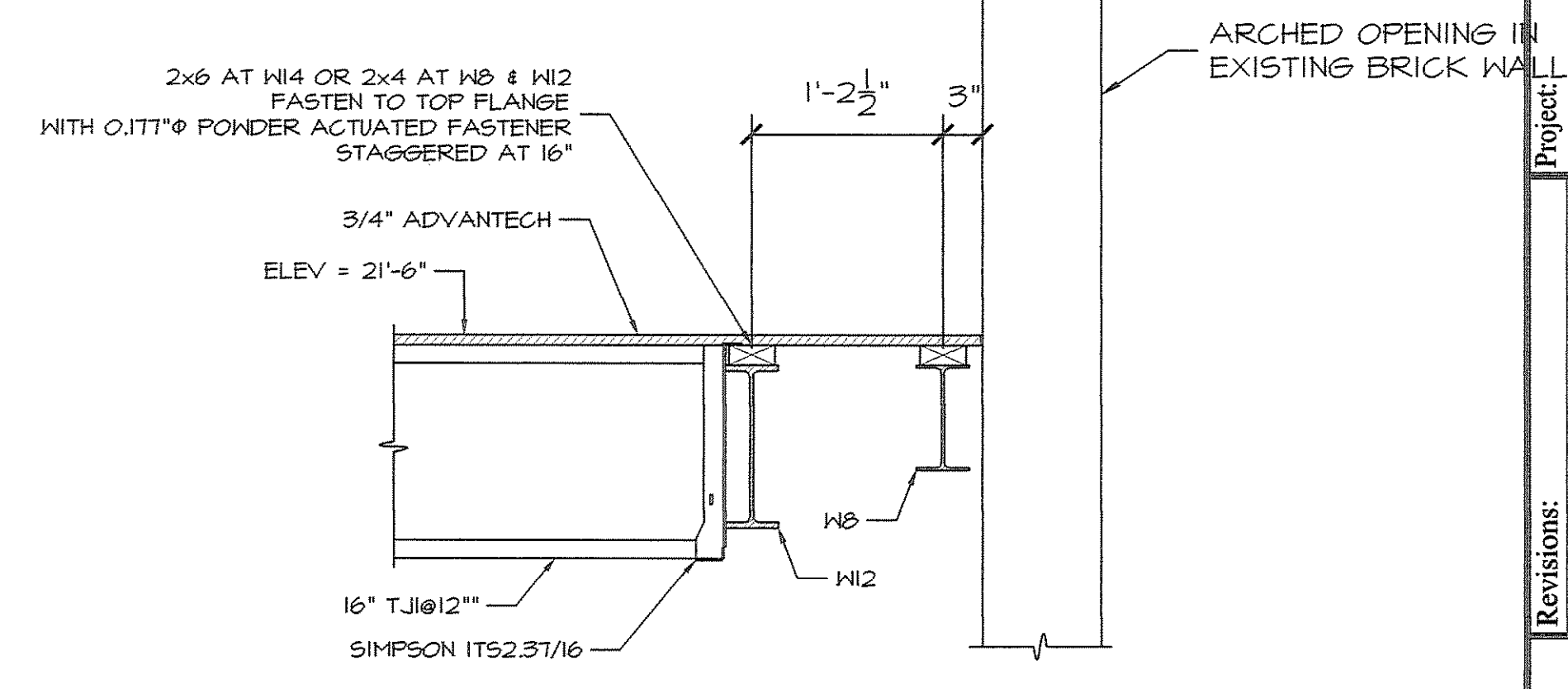
SECTION 3
 1"=1'-0" S1.03



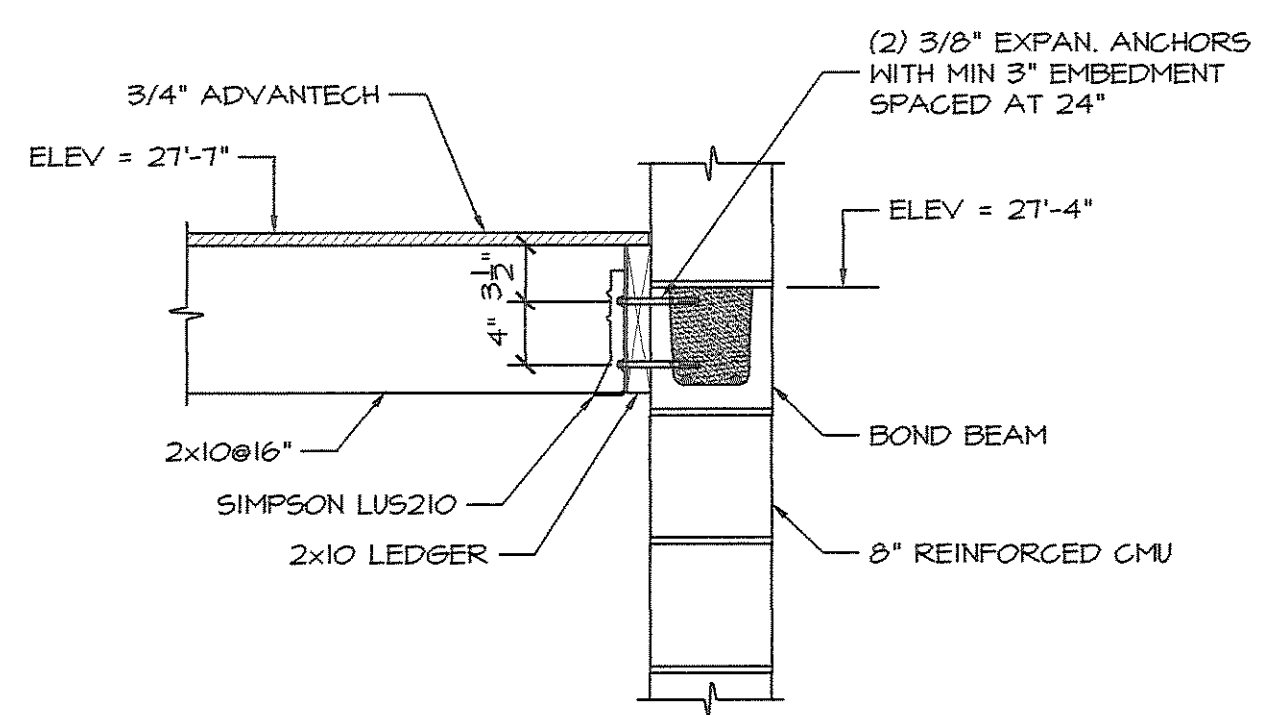
SECTION 4
 1"=1'-0" S1.03



SECTION 6
 3/4"=1'-0" S1.03
 SEE ARCHITECTURAL TENANT FIT-UP DRAWINGS FOR STAIR/SEATING RISER AND TREAD DIMENSIONS.



SECTION 7
 1"=1'-0" S1.03



SECTION 5
 1"=1'-0" S1.03