

Prepared For:  
**NORTHLAND ENTERPRISES, LLC**  
 ONE CITY CENTER - 4TH FLOOR  
 PORTLAND, ME 04101

Consulting Engineer:  
**STRUCTURAL DESIGN CONSULTING**  
 22 South Main Street  
 Old Orchard Beach, ME 04064-1171  
 Tel: 207.934.8088  
 Fax: 207.934.8099

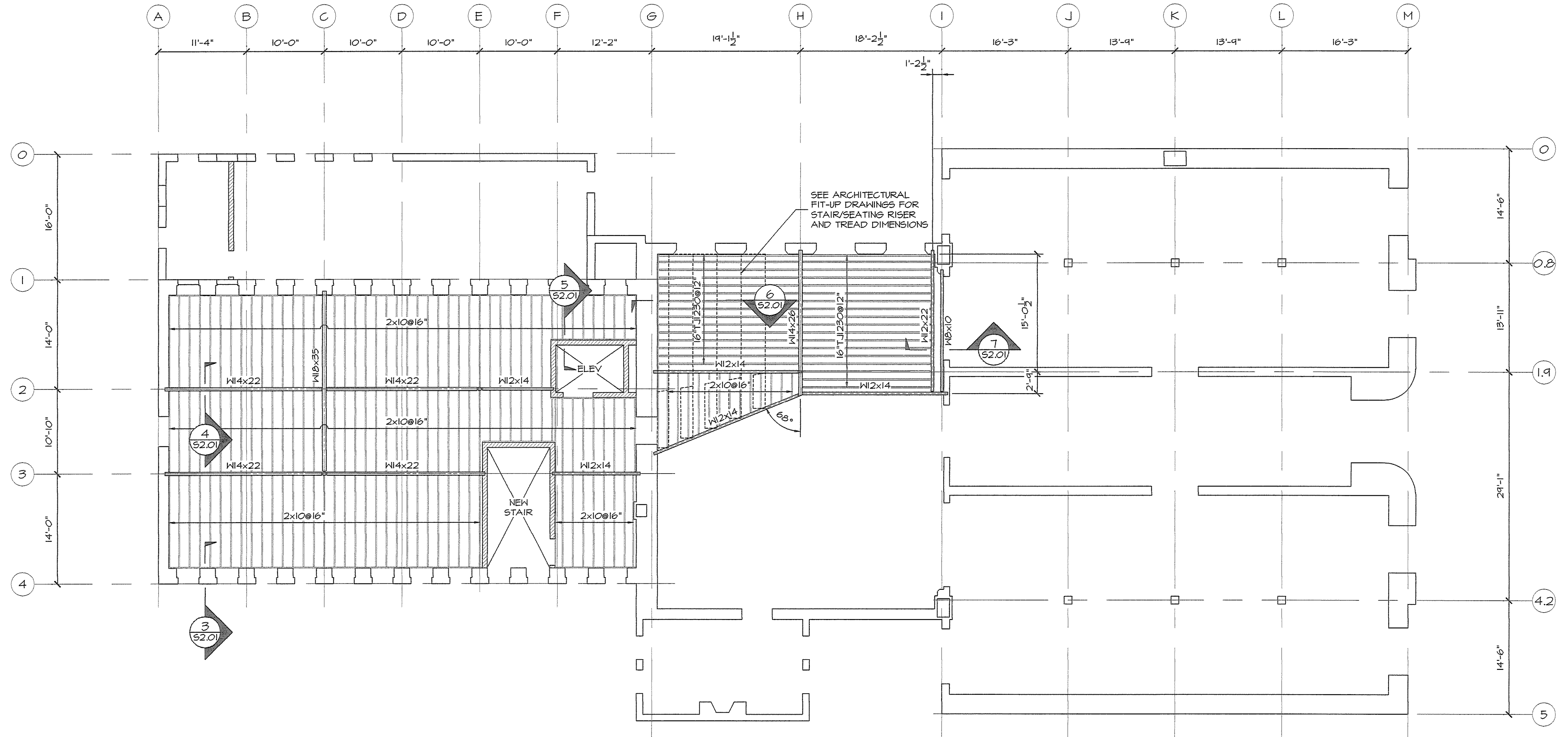
Architect:  
**ARCHETYPE architects**  
 48 Union Wharf Portland, Maine 04101  
 (207) 772-6022 Fax (207) 772-4056

Project:  
**The BAXTER LIBRARY**  
 619 CONGRESS STREET  
 PORTLAND, MAINE

Revisions:  
 Issued for Pricing 19 August 2009  
 Bid Set 08 September 2009

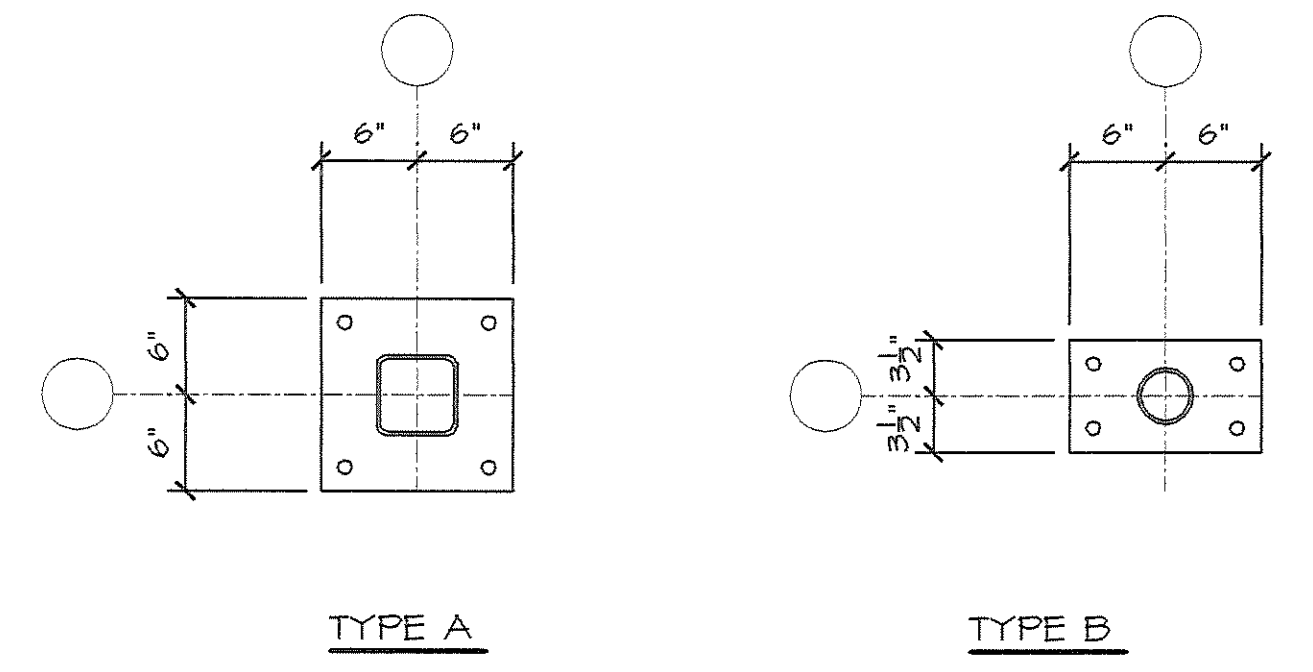
Date: 19 August 2009  
 Scale: 1/8" = 1'-0"  
**THIRD FLOOR FRAMING PLAN**

**S1.03**



**NEW 3RD FLOOR FRAMING PLAN**  
 1/8"=1'-0"  
 SHEATHING IS 3/4" ADVANTECH.  
 TOP OF STEEL ELEVATIONS:  
 GRIDS A-G 21'-4 3/4"  
 GRIDS 0-1 21'-3 3/4"

COLUMN SCHEDULE				
COLUMN MARK	SIZE	BOT. OF BASE PL ELEV.	BASE PL TYPE	TOP OF COLUMN ELEV.
C-3	H55 5x5x3/16	11'-1"	A	27'-4 3/4"
E-2	H55 5x5x3/16	11'-1"	A	27'-4 3/4"
J-1.4	3 1/2" STD PIPE	10'-1 1/2"	B	20'-2"



**BASE PLATE DETAILS**  
 1"=1'-0"  
 THICKNESS = 3/4"  
 HOLE DIAMETER = 1/8"  
 HOLE EDGE DISTANCE = 1 1/2"  
 ANCHOR BOLTS ARE 3/4" EXPANSION WITH 4" EMBEDMENT  
 SET ON 3/4" NON-SHRINK GROUT