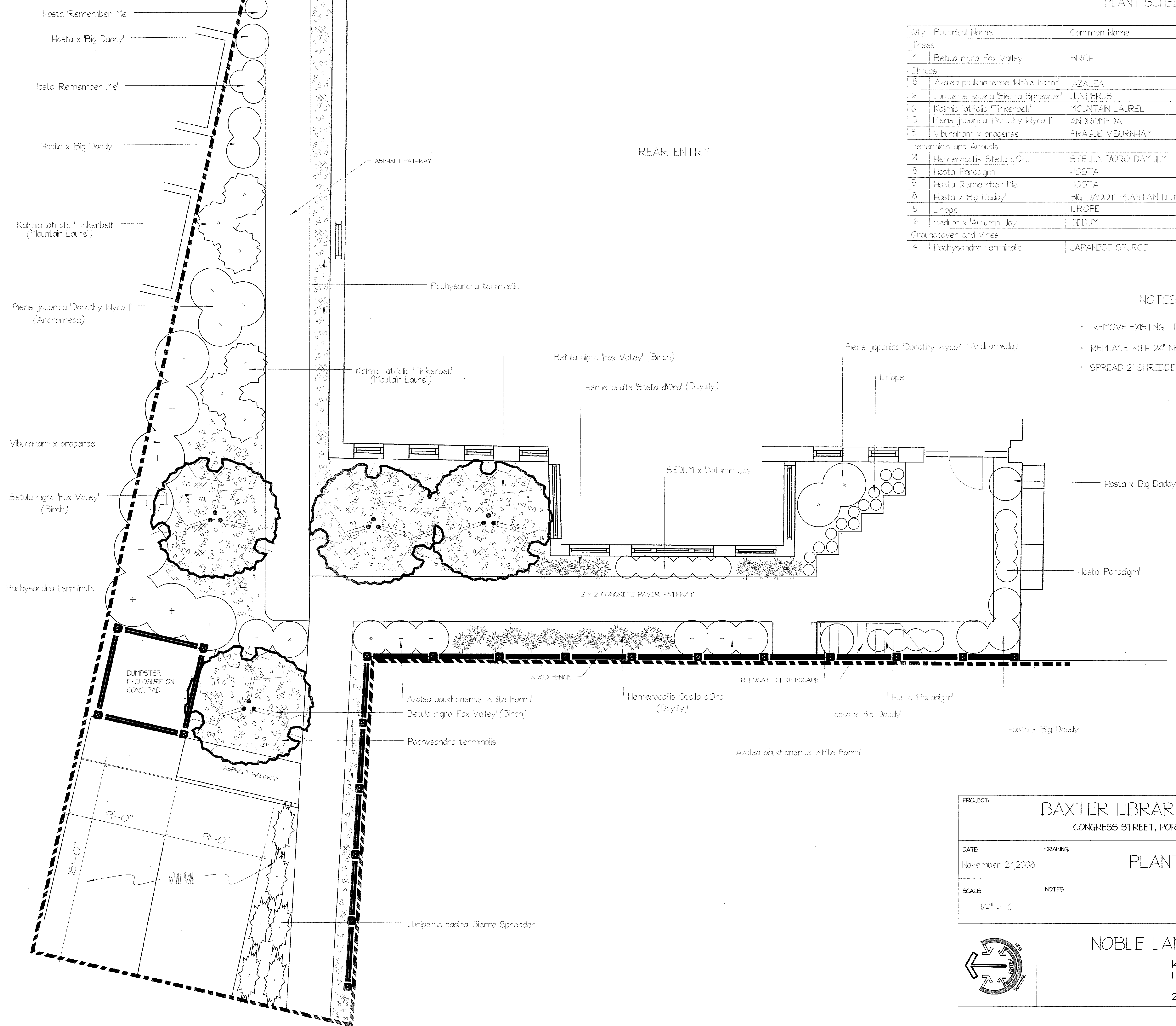


PLANT SCHEDULE

Qty	Botanical Name	Common Name	Size/Condition	Remarks
Trees				
4	Betula nigra 'Fox Valley'	BIRCH	6-7' B&B	MULTI-STEM
Shrubs				
8	Azalea poukhanense 'White Form'	AZALEA	#3	
6	Juniperus sabin 'Sierra Spreader'	JUNIPERUS	#5	
6	Kalmia latifolia 'Tinkerbell'	MOUNTAIN LAUREL	#5	
5	Pieris japonica 'Dorothy Wycoff'	ANDROMEDA	2-2.5' HEAVY GRADE	
8	Viburnum x pragense	PRAGUE VIBURNUM	#3	
Perennials and Annuals				
21	Hemerocallis 'Stella d'Oro'	STELLA DORO DAYLILY	#1	
8	Hosta 'Paradigm'	HOSTA	#1	
5	Hosta 'Remember Me'	HOSTA	#1	
8	Hosta x 'Big Daddy'	BIG DADDY PLANTAN LILY	#1	
15	Liriope	LIRIOPE	#1	
6	Sedum x 'Autumn Joy'	SEDUM	#1	
Groundcover and Vines				
4	Pachysandra terminalis	JAPANESE SPURGE	100 CUTTINGS/FLAT	

NOTES

- * REMOVE EXISTING TOP 24" OF SOL/DEBRIS MINIMUM
- * REPLACE WITH 24" NEW TOPSOL AMMENDED WITH ORGANIC MATTER
- * SPREAD 2" SHREDDED BARK MULCH (DARK)



PROJECT:		BAXTER LIBRARY BUILDING CONGRESS STREET, PORTLAND, MAINE	
DATE:	NOVEMBER 24, 2008	DRAWING:	PLANTING PLAN
SCALE:	1/4" = 1.0'	NOTES:	
		NOBLE LANDSCAPE DESIGN 148 PINE STREET PORTLAND, MAINE 207-650-6200	