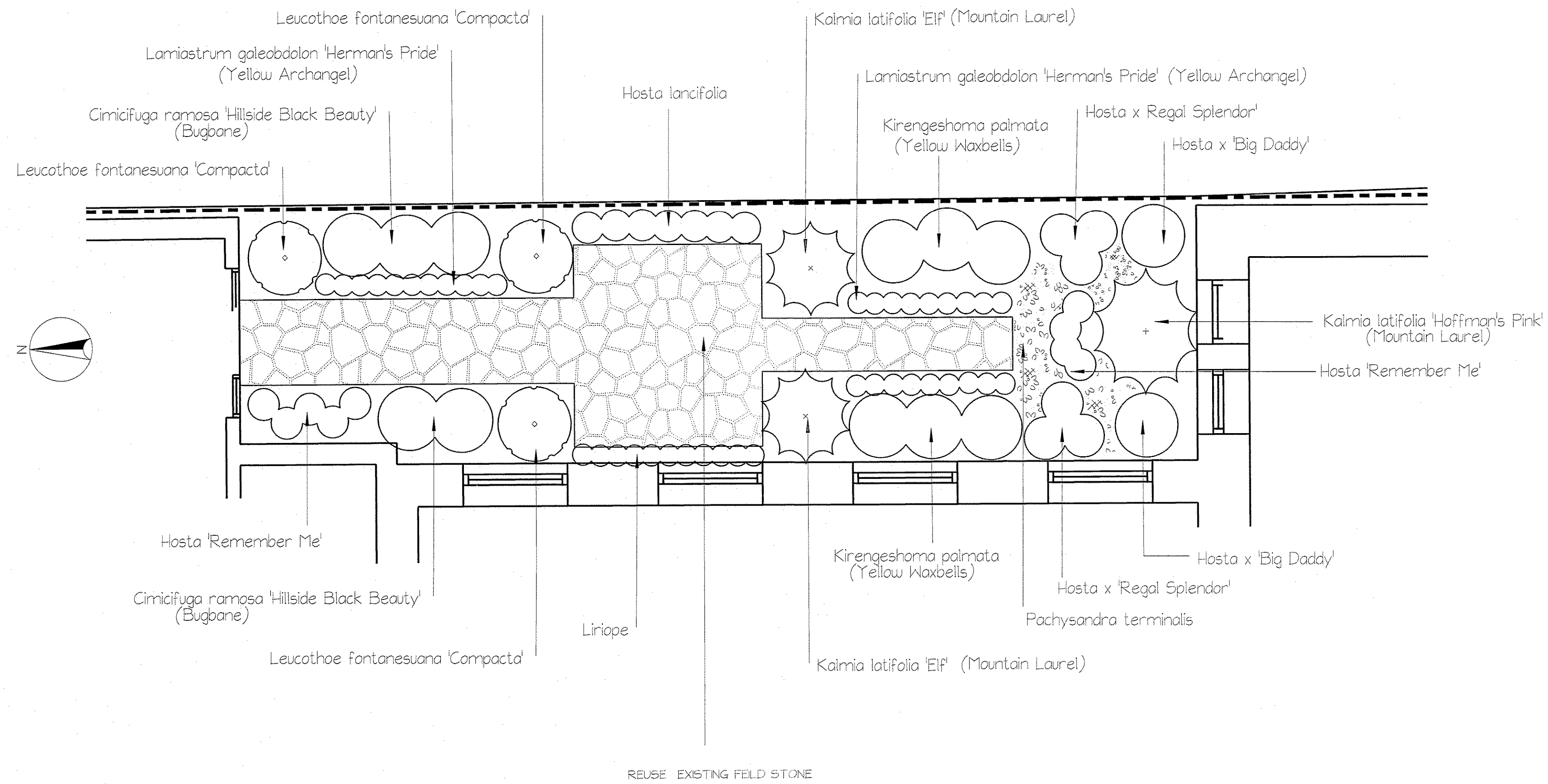


COURTARD



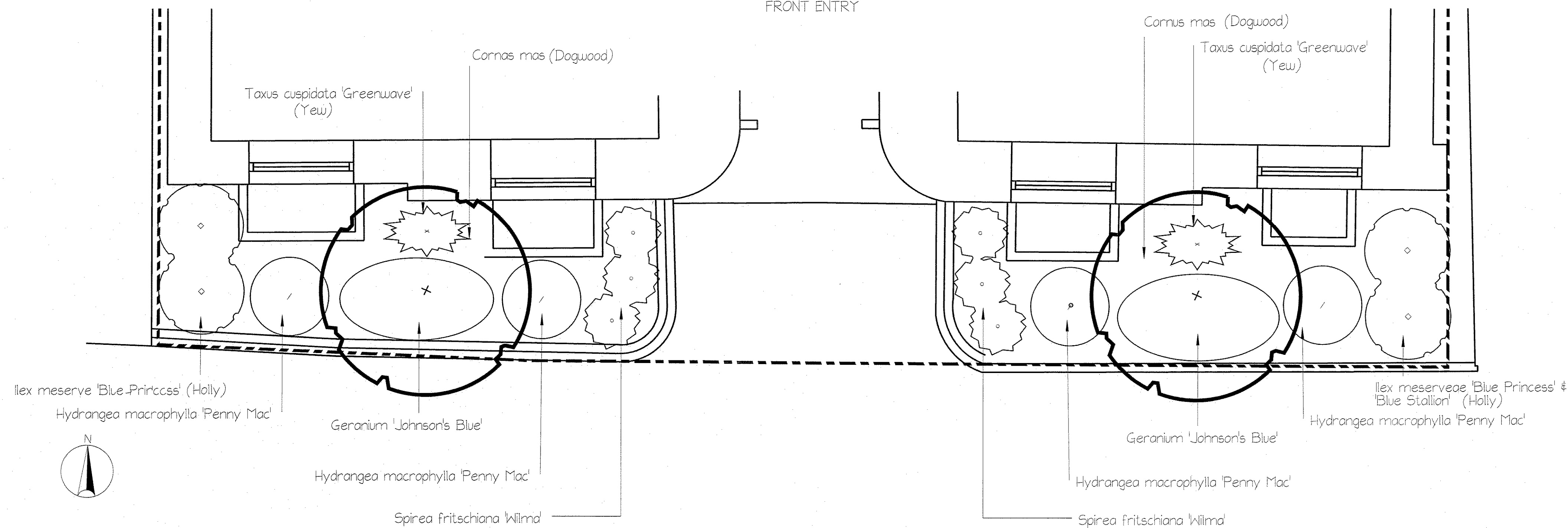
PLANT SCHEDULE

Qty	Botanical Name	Common Name	Size/Condition	Remarks
<b>Trees</b>				
2	<i>Cornus mas</i> 'Golden Glory'	CORNELIANCHERRY DOGWOOD	2'-2.5" CALIPER	
<b>Shrubs</b>				
4	<i>Hydrangea macrophylla</i> 'Penny Mac'	HYDRANGEA	#5 CONTAINER	
2	<i>Kalmia latifolia</i> 'Elf'	ELF DWARF MOUNTAIN LAUREL	#5	
3	<i>Leucothoe fontanesuana</i> 'Compacta'	DROOPING LEUCOTHOE	#2	
3	<i>Ilex meserve</i> 'Blue Princess'	HOLLY	2.5'-3'	
1	<i>Ilex meserve</i> 'Blue Stallion'	HOLLY	2.5'-3'	
1	<i>Kalmia latifolia</i> 'Hoffman's Pink'	MOUNTAIN LAUREL	#7	
6	<i>Spirea fritschiana</i> 'Wilma'	KOREAN SPIREA	#3	
2	<i>Taxus cuspidata</i> 'Greenwave'	SPREADING YEW	2'-2.5'	
<b>Perennials and Annuals</b>				
5	<i>Cimicifuga ramosa</i> 'Hillside Black Beauty'	BUGBANE	#1	
7	<i>Hosta lancifolia</i>	LANCE LEAF PLANTAIN LILY	#1	
2	<i>Hosta x 'Big Daddy'</i>	BIG DADDY PLANTAIN LILY	#1	
9	<i>Hosta x 'Remember Me'</i>	HOSTA	#1	
6	<i>Hosta x 'Regal Splendor'</i>	REGAL SPLENDOR PLANTAIN LILY	#1	
29	<i>Lamiostrum galeobdolon</i> 'Hermon's Pride'	YELLOW ARCHANGEL	#1	
6	<i>Kirengeshoma palmata</i>	YELLOW WAXBELLS	#1	
1	<i>Liriope</i>	LIRIOPE	#1	
28	<i>Geranium 'Johnson's Blue'</i>	CRANESBILL	#1	
<b>Groundcover and Vines</b>				
1	<i>Pachysandra terminalis</i>	JAPANESE SPURGE	100'/FLAT	

NOTES

- \* REMOVE ALL EXISTING PLANT MATERIAL WITH THE EXCEPTION OF VINE GROWING ON ADJACENT BUILDING (COURTYARD)
- \* AMMEND SOIL WITH ORGANIC MATTER TO A DEPTH OF 24"
- \* APPLY 2" OF SHREDDED BARK MULCH (DARK)

FRONT ENTRY



PROJECT:	BAXTER LIBRARY BUILDING CONGRESS STREET, PORTLAND, MAINE	
DATE:	NOVEMBER 24, 2008	DRAWING: PLANTING PLAN
SCALE:	1/4" = 1.0'	NOTES:
<b>NOBLE LANDSCAPE DESIGN</b> 148 PINE STREET PORTLAND, MAINE 207-650-6200		