

**DOOR AND FRAME SCHEDULE**

MARK	DOOR				FRAME		HARDWARE	REMARKS
	WIDTH	HEIGHT	THICK	MATERIAL	MATERIAL	TYPE		
100	3'-0"	7'-0"	1-3/4"	WOOD / TEMP GLASS	HM	F1	HW1	SEE NOTE 1

**GENERAL NOTES:**

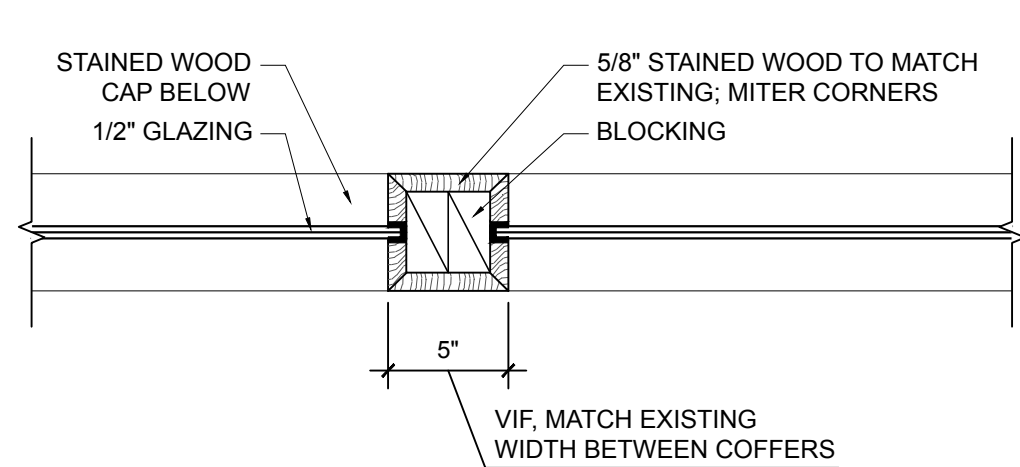
1. RE-USE EXISTING OWNER-SUPPLIED SOLID MAPLE DOOR. INSTALL TEMPERED GLASS KIT TO MATCH EXISTING DOORS.

**HARDWARE SPECIFICATIONS:**

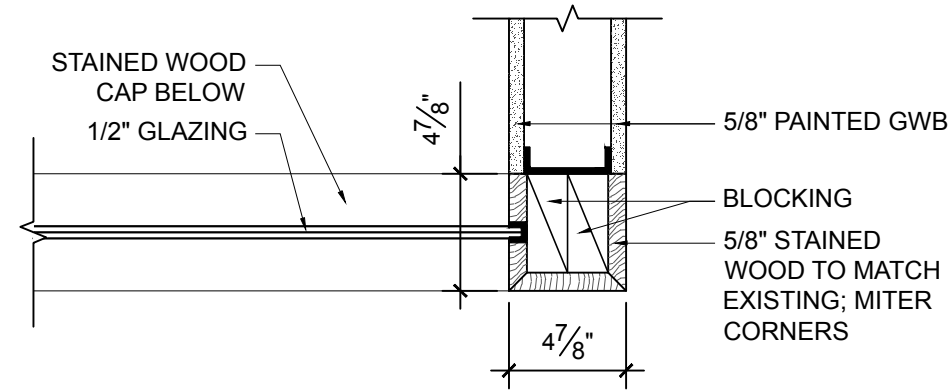
HW1: KEYED CLASSROOM SET, MATCH MANUF., LINE & FINISH OF EXIST. HARDWARE THRU-OUT INTERIOR.

**FRAME TYPES:**

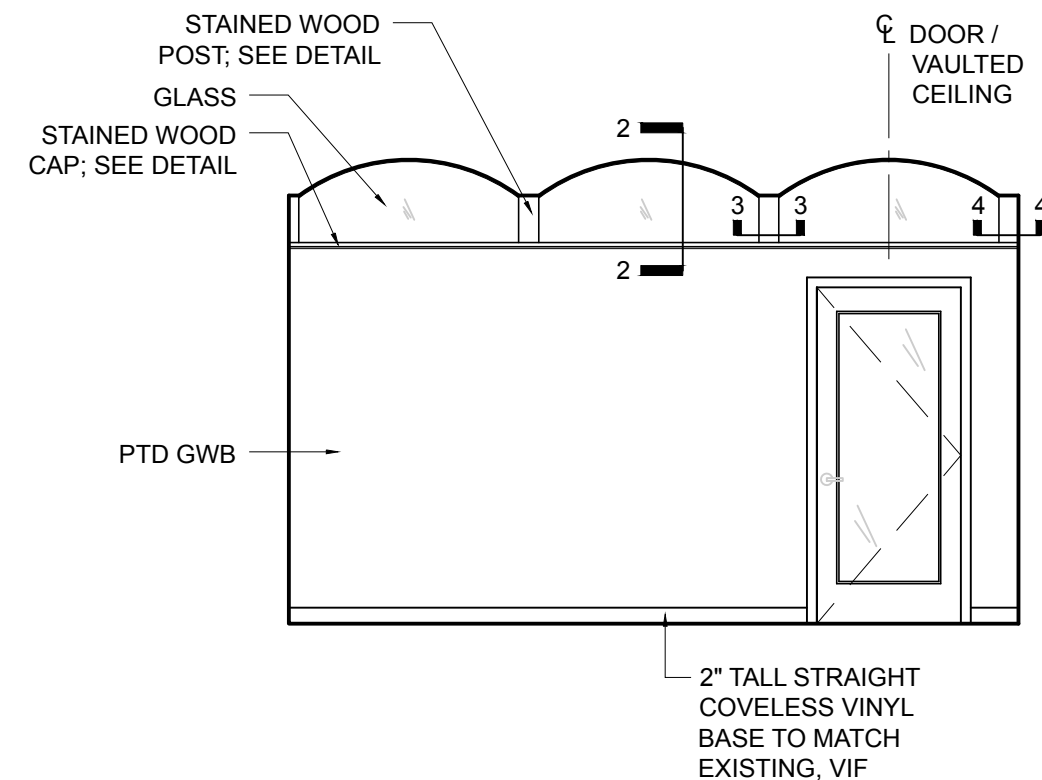
F1: HOLLOW METAL WITH 2" FACE, PAINTED



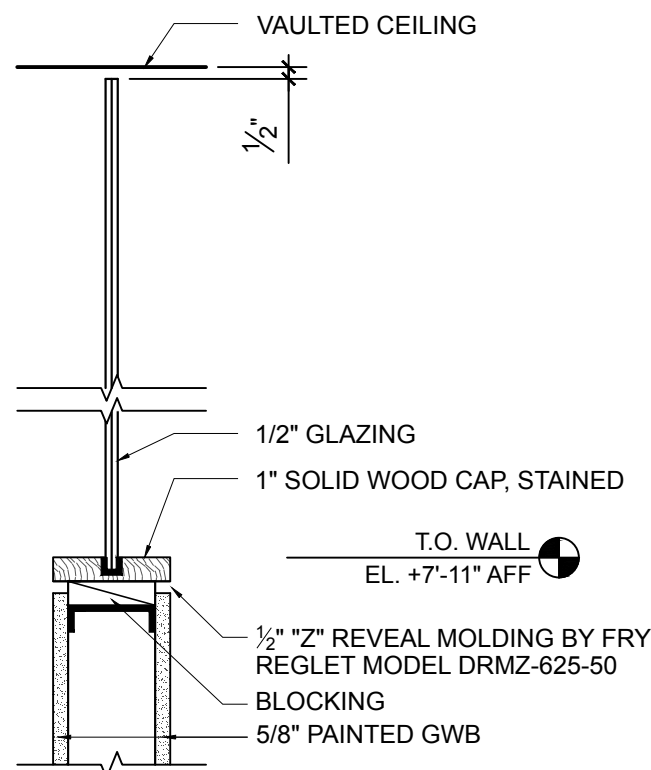
3 PLAN SECTION  
 SCALE: 1-1/2" = 1'-0"



4 PLAN SECTION @ CORNER  
 SCALE: 1-1/2" = 1'-0"



1 PARTIAL ELEVATION  
 SCALE: 1/4" = 1'-0"



2 SECTION DETAIL @ GLAZING  
 SCALE: 1-1/2" = 1'-0"

DRAWING TITLE: **ELEVATIONS & DETAILS**

PROJECT NAME: **VIA Phase III Renovations**  
 619 CONGRESS ST, PORTLAND, ME 04101



DATE OF ISSUE:  
 JANUARY 10, 2018  
 DESCRIPTION:  
 CONSTRUCTION DOCUMENTS  
 SCALE:  
 VARIES  
 PROJECT NUMBER:  
 2017-0270

**A401**