

GENERAL NOTES

SUMMARY OF FIRE RATINGS:

FIRE RATING & FIRE STOPPING: PROVIDE FIRE RATING SYSTEM/MATERIAL AT ALL PENETRATIONS THRU FIRE RATED ASSEMBLIES. COORDINATE PROPOSED SYSTEMS & MATERIALS FOR APPROPRIATENESS & COMPATIBILITY W/ OTHER BLDG. SYSTEMS, TYPE OF SYSTEM PENETRATED, & APPLICATION. PROVIDE 2x SOLID BLOCKING AT CEILING LEVEL, OR ALTERNATIVE METHOD APPROVED BY IBC 2003 IN UNIT COMMON WALLS.
 FIRE DAMPERS: PROVIDE APPROPRIATELY RATED FIRE DAMPERS AT ALL LOCATIONS WHERE MECHANICAL VENTILATION DUCTS PENETRATE RATED ASSEMBLIES.

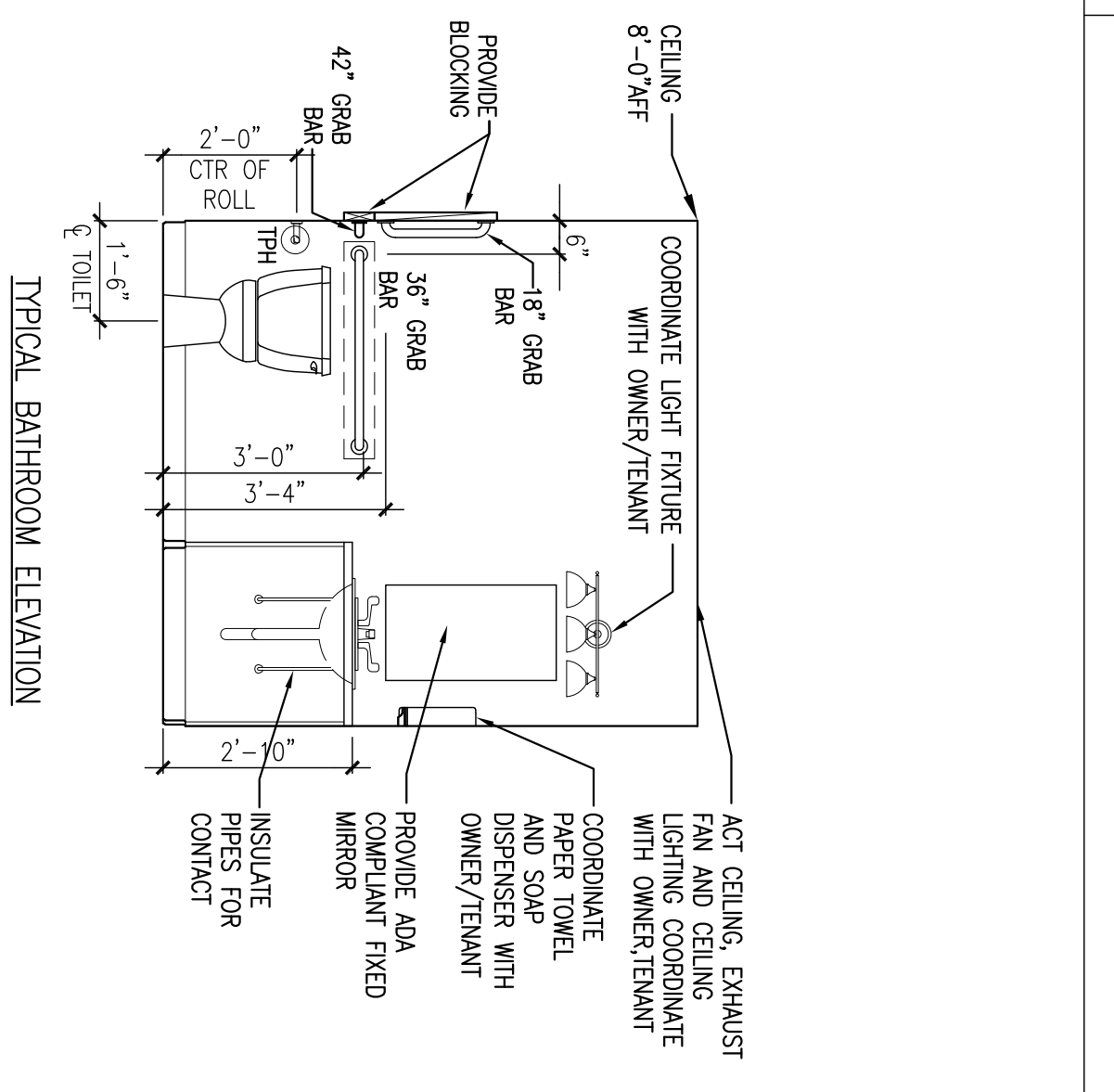
SCHEDULE NOTES

- 1) PROVIDE MOISTURE RESISTANT TYPE "Max" GMB AT ALL WALL & CEILING SURFACES WITHIN ALL BATHROOMS, UTILITY ROOM & JANITOR'S CLOSETS. PROVIDE TYPE "Max" GMB TO 4'-0" AFF. BEHIND ALL SINK LOCATIONS, TYPICAL. PROVIDE CEILING SUPPORT CHANNELS @ 16" O.C. AT ALL LOCATIONS WHERE MAX BOARD IS USED ON CEILINGS PER ASTM STANDARDS.
- 2) BRACE WALL ASSEMBLIES TO STRUCTURE ABOVE AT ALL DOORS AND ELSEWHERE AS REQUIRED.
- 3) PROVIDE SOLID BLOCKING AS INDICATED ON DRAWINGS AND AS REQUIRED BY MANUFACTURER'S EQUIPMENT (KITCHEN CASE WORK, TOILET & BATH ACCESSORIES, CLOSET ROOS & SHELVING & H.C. GRAB BARS)
- 4) REFERENCE DOOR & WINDOW SCHEDULE FOR ADDITIONAL INFORMATION. REFERENCE SPECIFICATIONS FOR ADDITIONAL INFORMATION.
- 5) PROVIDE CONTINUOUS ACOUSTICAL SEALANT ALONG ALL PERIMETER BUILDING EDGES UNIT SEPARATION WALLS & UNIT/CORRIDOR WALLS BETWEEN GMB AND THE SURROUNDING FLOOR, WALL & CEILING ELEMENTS.
- 6) PROVIDE CONTINUOUS ACOUSTICAL SEALANT AT ALL PENETRATIONS (I.E. ELECTRICAL BOXES, SPRINKLER HEADS, ETC.) IN WALLS, FLOORS, & CEILINGS. PROVIDE FIRE RATED SEALANT AT FIRE RATED WALL ASSEMBLIES, HILLI OR EQUAL.
- 7) WHEN WALL DEVICES (I.E. ELECTRICAL, OUTLETS, PIPES TELEPHONE JACKS, ETC.) OCCUR IN UNIT SEPARATION WALL, PROVIDE CONTINUOUS ACOUSTICAL SEALANT ALONG ALL PERIMETER EDGES AND BACKS OF DEVICES
- 8) WHEN WALL PENETRATIONS (I.E. ELECTRICAL, OUTLETS, PIPES TELEPHONE JACKS, ETC.) OCCUR ON OPPOSITE SIDES OF UNIT SEPARATION WALL, OFFSET PENETRATION BY AT LEAST ONE STUD CANT.
- 9) PROVIDE SIL. SEALER INSULATION FOR BOTH TOP & BOTTOM PLATES OF PARTITION FOR UNIT SEPARATION WALLS AND UNIT/CORRIDOR SEPARATION WALLS. TYPICAL.
10. SEAL ALL PENETRATIONS IN VAPOR BARRIER, (EXTERIOR WALLS, ATTIC & CONCRETE SLAB-ON-GRADE) AS REQUIRED WITH APPROVED SEALERS, INSULATIONS AND TAPES.
11. ALL BASEMENT GMB WALL PARTITIONS TO BE TYPE "Max" OR TYPE "Max", MIN. 4'-0" AFF. TYPICAL.
12. COORDINATE ALL UNIT INTERIOR CONSTRUCTION AND PARTITIONS WITH OWNER PRIOR TO COMMENCING WORK.
13. OWNER TO COORDINATE SPRAY-IN-PLACE FOAM INSULATION @ ALL CONCEALED SPACES SUCH AS SHOWERS, ETC. LOCATIONS.

WALL PARTITION SCHEDULE

PARTITION TYPE	DESIGN NO., U.L. TYPE, FIRE RATING AND ACOUSTICAL RATINGS	GENERAL WALL DESCRIPTION	GENERAL PICTORIAL
NON RATED	3	INTERIOR GMB WALL ASSEMBLY: 3 5/8" METAL STUDS @ 16" O.C. FROM FINISHED FLOOR TO UNDERSIDE OF EXIST. DECK WITH CONTINUOUS SOUND ATTENUATION BATT. BOTH SIDES: (1) LAYER OF 5/8" GMB TO ROOF DECK ABOVE OR USE TYPE "Max" OR TYPE "Max" GMB AT BATHROOM LOCATIONS	TAGGED SIDE 4 7/8" OPPOSITE SIDE
NON RATED	4	INTERIOR GMB WALL ASSEMBLY: 6" METAL STUDS @ 16" O.C. FROM FINISHED FLOOR TO UNDERSIDE OF EXIST. DECK WITH CONTINUOUS SOUND ATTENUATION BATT. BOTH SIDES: (1) LAYER OF 5/8" GMB TO ROOF DECK ABOVE OR USE TYPE "Max" OR TYPE "Max" GMB AT BATHROOM LOCATIONS	TAGGED SIDE 7 1/4" OPPOSITE SIDE
NON RATED	5	INTERIOR GMB WALL ASSEMBLY: 6" METAL STUDS @ 16" O.C. FROM FINISHED FLOOR TO UNDERSIDE OF EXIST. DECK WITH 6" CONTINUOUS SOUND ATTENUATION BATT. BOTH SIDES: (1) LAYER OF TYPE "X" 5/8" GMB TO ROOF DECK ABOVE OR USE TYPE "Max" OR TYPE "Max" GMB AT BATHROOM LOCATIONS	TAGGED SIDE 7 1/4" OPPOSITE SIDE
1 HOUR UL DESIGN NO. U419	6	2x4 STAGGERED WOOD STUDS @ 12" O.C. (@ 24" O.C. ON EACH SIDE) ON 2x6 WOOD TOP AND BOTTOM PLATES TO UNDERSIDE OF FLOOR DECK ABOVE. (1) LAYER OF 5/8" TYPE "X" GMB EACH SIDE TO UNDERSIDE OF FLOOR DECK ABOVE AND / OR UNDERSIDE OF DECK, SEALED TIGHT. CONTINUOUS 3 1/2" SOUND ATTENUATION BATT. BOTH SIDES: (1) LAYER OF 5/8" SOLID BLOCKING AT CEILING LEVEL, OR ALTERNATIVE METHOD APPROVED BY IBC 2003 IN UNIT COMMON WALLS.	TAGGED SIDE 5/8" x 5 1/4" x 3 1/2" OPPOSITE SIDE

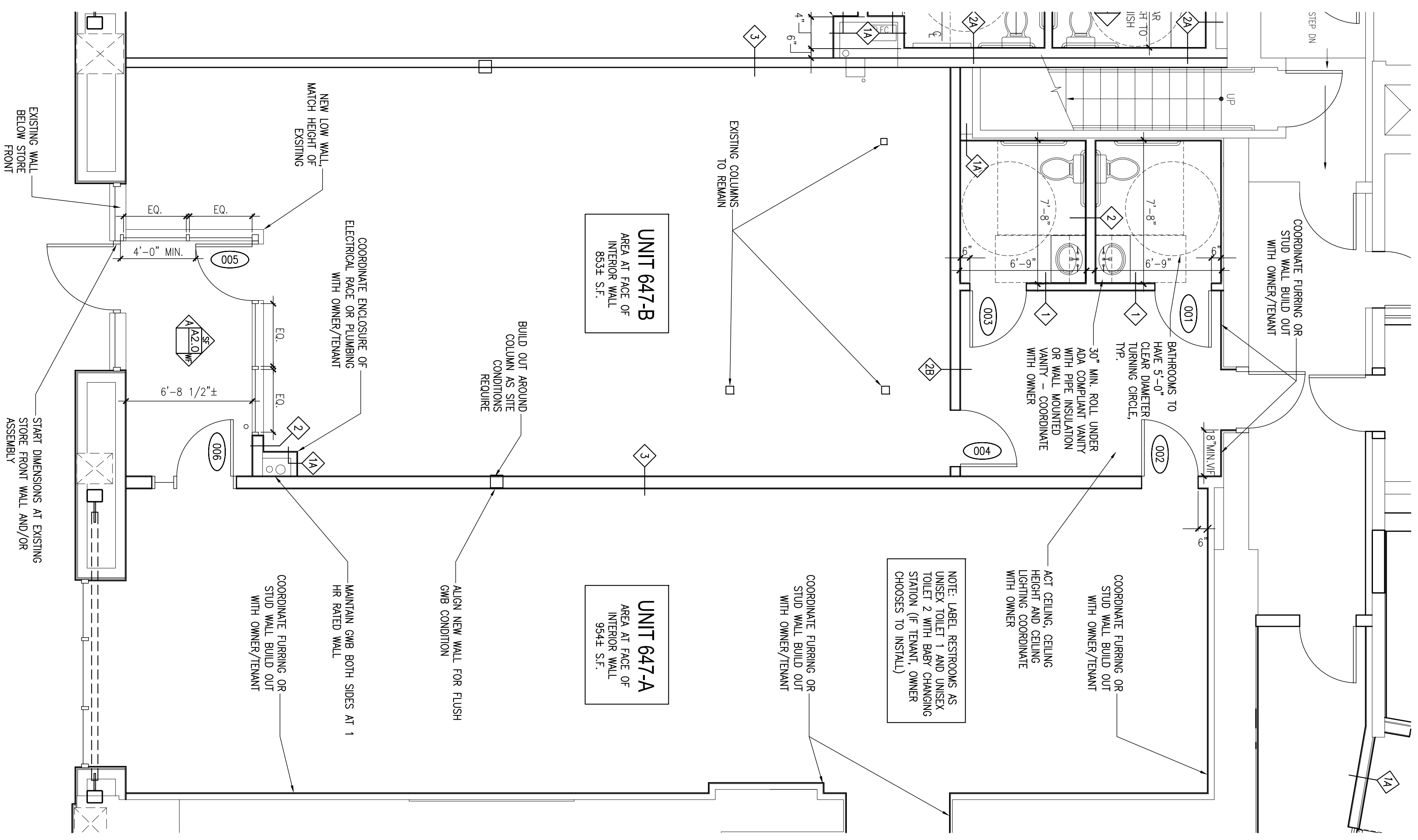
GENERAL NOTES AND PARTITION TYPES



SCALE: NTS

TYPICAL BATHROOM ELEVATION

SCALE: 3/8"=1'-0"



PARTIAL FLOOR PLAN

SCALE: 1/4"=1'-0"